

Device Networking Access



EH2305-1Fm

Industrial 5-Port Unmanaged Fast Ethernet Switch with Optical Fiber

■ ■ EH2305-1Fm/1Fs
RoHS compliant



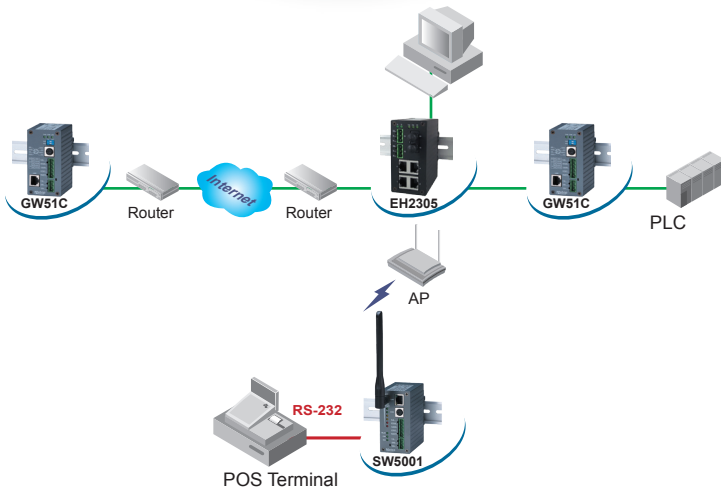
EH2305-1Fs

Technology

- 10/100BaseT(X) (RJ45), 100BaseFX (SC/ST connector)
- Broadcast storm protection
- Support IEEE 802.3/ 802.3u/ 802.3x
- 10/100M, Full/Half-Duplex, MDI/MDI-X auto-detection
- Local area transmit distance of 2 Km with Multi-mode Fiber connections
- Long-haul transmit distance of 20 Km with Single-mode Fiber connections

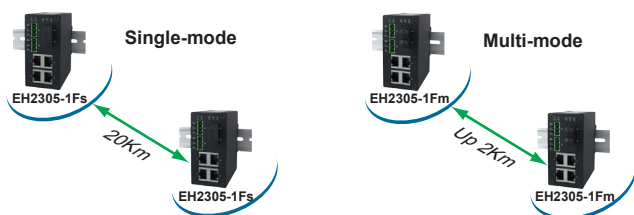
Reliability

- Redundant dual DC power inputs
- Operating temperature ranges from -10~70°C
- Rugged high-strength housing
- DIN-Rail or wall mounting ability



The EH2305-1Fm/1Fs has a metal housing with 4 RJ-45 ports and one optical ST/SC port, it's designed to work in the industrial environment, such as in hazardous locations that comply with CE, FCC, UL and RoHS standards.

The EH2305 series protects itself from receiving too many broadcast packets. During normal use, broadcast packets will be forwarded to all ports except the source port. However, it will discard broadcast or multicast packets if the number of those packets exceeds a threshold in a preset period of time. When the preset period expires (about 800ms), it will then resume receiving broadcast or multicast packets until the threshold is reached again.



The EH2305 series provides two redundant power inputs that can be connected simultaneously to wide-range DC power sources. If one of the power inputs failure, the other live source acts as a backup to provide EH2305 series the power it needs automatically.

Industrial 5-Port Unmanaged Fast Ethernet Switch with Optical Fiber

EH2305-1Fm/1Fs

Specifications

Ethernet	
Transmission rate	10/100Mbps
Ports	5
10/100Mbps	5
Connector	RJ-45 x 4 + Fs/Fm x 1
Auto MDI/MDI-X	Yes

Power	
Input	DC 9~30V
Connector	Dual 3 pin 5.08mm pitch Terminal block
Consumption	5.4Watts Max

Environment	
Operating	-10°C ~ 70°C (14°F ~ 158°F)
Storage	-40°C ~ 85°C (-40°F ~ 185°F), 5%~95% RH

Notes:
For UL policy the maximum operating temperature is 50°C, and the human body can tolerate maximum temperature is 70°C.

Dimension	
W x H x D	45.2mm x 90mm x 78mm

Approval	
UL(Safety):	UL60950-1, CSA C22.2 No.60950-1-03
FCC(EMI):	FCC 47 CFR Part15, Subpart B, Class A ICES-003, Class A ANSI C63.4-2003
CE(EMI):	EN55032:2012+AC:2013, Class A EN 61000-3-2:2014, Class A EN 61000-3-3: 2013
CE(EMS):	EN 55024:2010 IEC 61000-4-2:2008 IEC 61000-4-3:2010 IEC 61000-4-4:2012 IEC 61000-4-5:2014 IEC 61000-4-6:2013 IEC 61000-4-8:2009 IEC 61000-4-11:2004
Shock:	IEC 60068-2-27
Free Fall:	IEC 60068-2-32
Vibration:	IEC 60068-2-6
RoHS:	Lead(Pb) Free
MTBF:	471160 hrs(25°C) / 53.79 years(25°C)
Warranty:	5 years

Optional Accessories

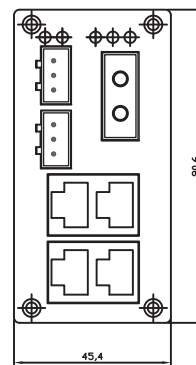
Power adapter	UN315-1212 (US-Y): Y-Type power adapter, 100~240VAC input, 1.25A @ 12VDC output, US plug, LV6
	UNE315-1212 (EU-Y): Y-Type power adapter, 100~240VAC input, 1.25A @ 12VDC output, EU plug, LV6

Ordering information

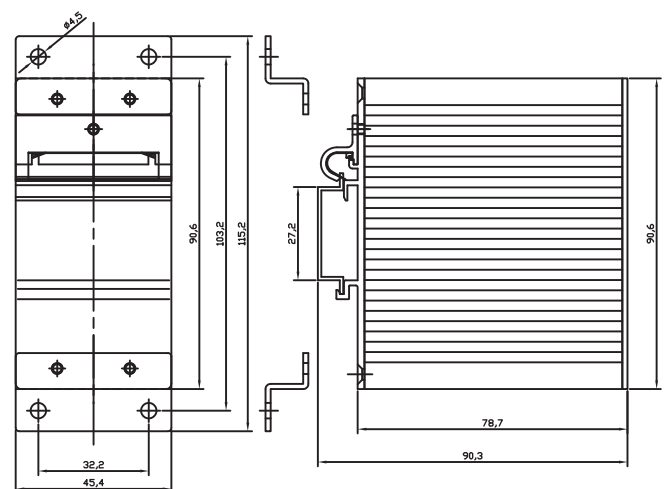
1P1EH23051FM01G	Industrial 5-port Unmanaged Fast Ethernet Switch with 4x 10/100TX & 1x 10/100FX Multi-mode
EH2305-1F	
1P1EH23051FS01G	Industrial 5-port Unmanaged Fast Ethernet Switch with 4x 10/100TX & 1x 10/100FX Single-mode
EH2305-1Fs	

Optical Fiber Specifications

Speed	Fast Ethernet 100BaseFX	
	Multi-mode	Single-mode
Mode	Multi-mode	Single-mode
Connectors	ST	SC
Typical Distance	2Km(Max)	20Km(Max)
Cable Size Core /Cladding	62.5/125 um	9/125 um
Wavelength	1270(Min)~1360(Max) nm	1263(Min)~1360(Max) nm
Max. TX Power	-14 dBm	-8 dBm
Min. TX Power	-19 dBm	-15 dBm
RX Sensitivity	-34 dBm(Typical) -32 dBm(Max)	-32 dBm(Max)
Link Budget	---	---
Saturation / Overload	---	---
Typical Budget	---	---



Front-panel front view



Backboard rear view

(Mount kit)

Housing side view

Atop Technologies, Inc.

TEL : +886-3-5508137
FAX : +886-3-5508131
sales@atop.com.tw
http : //www.atop.com.tw

Design and specification are subjected to change without notice.
All product names referenced herein are registered trademarks of their respective companies.



CA_EH2305-1Fm/1Fs_E : v5-170629