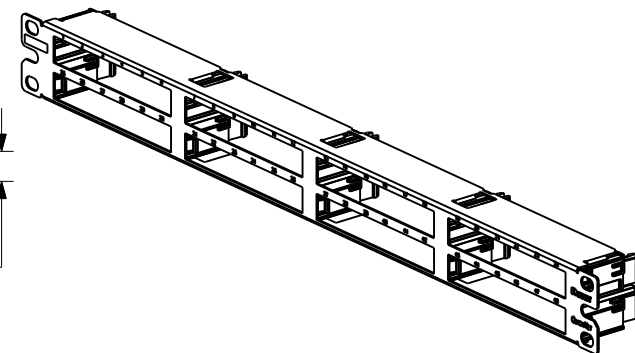
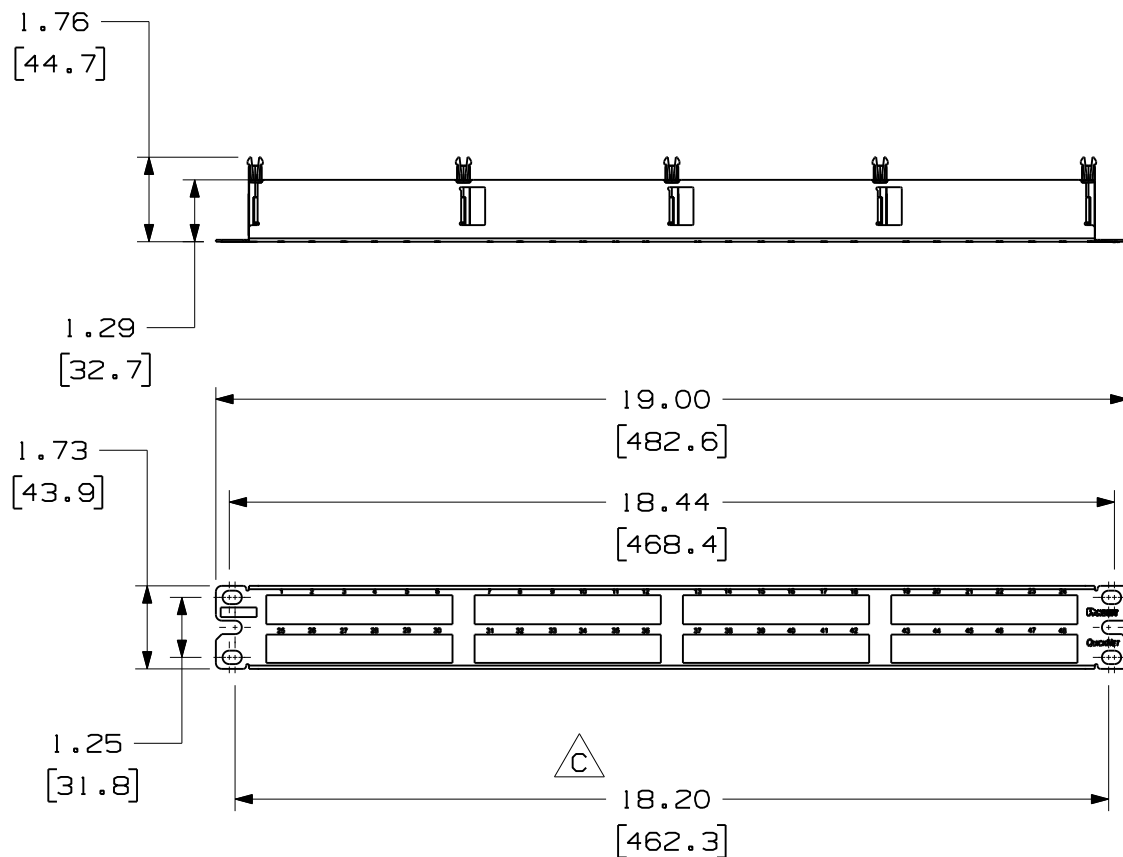


THIS COPY IS PROVIDED ON A RESTRICTED BASIS AND IS NOT TO BE USED IN ANY WAY DETRIMENTAL TO THE INTERESTS OF PANDUIT CORP.

PANDUIT PART NO.	WEIGHT (APPOX.)
QPP48HDBL	0.65 lb (294.8 g)

- NOTES:
- SEE CURRENT CATALOG FOR VARIOUS APPLICATIONS.
 - THE PATCH PANEL IS DESIGNED FOR MOUNTING TO 19" UNIVERSAL RACKS.
 - DIMENSIONS IN BRACKETS ARE IN METRIC.
 - PART INCLUDES:
 - 1- METAL STAMPING WITH SLIDE GUIDES
 - 1- SCREW KIT (INCLUDES FOUR #12-24 SCREWS)
 - 1- SCREW KIT (INCLUDES FOUR M6 SCREWS)



MODEL FILENAME	M02582BP_48_PORT_1RU_ST_PANEL_ASSY_06	SIZE	A
DRAWING FILENAME	M02582BP_DC18_06A.PRT		
TITLE			
QUICKNET 48 PORT PATCH PANEL CUSTOMER DRAWING			

REV	DATE	BY	CHK	DESCRIPTION	ECN	R	CUST	SUP	OTH
1	6-15-07	BJN	EJH	C. ADDED 18.20(462.3) DIMENSION B. ADDED .62(15.9) DIMENSION A. UPDATED MODEL TO REV 06	02582-18			TRW	
R	11-10-06	MDJr	WFM	RELEASED TO PRODUCTION	02582-18		TRW	TRW	

<p>PANDUITTM CORP. TINLEY PARK, ILL 60477</p>	I.I. NUMBER
	PRODUCT SPEC
<p>THIRD ANGLE PROJECTION</p>	WORK INSTRUCTION
	SCALE
<p>ALL DIMENSIONS ARE GIVEN IN INCHES, UNLESS OTHERWISE SPECIFIED.</p> <p>DIMENSIONAL TOLERANCES ARE:</p> <p>(.X) ±.06 (.XXX) ±.010 (.XX) ±.02 ANGLES ± 2°</p>	PART NO.
<p>DRAWN BY: MDJr</p> <p>DATE: 9-01-06</p> <p>CHK'D: WFM</p>	<p>MATERIAL:</p> <p>PANEL: CRS GUIDES: ABS</p>
DRAWING NO. 02582-18	