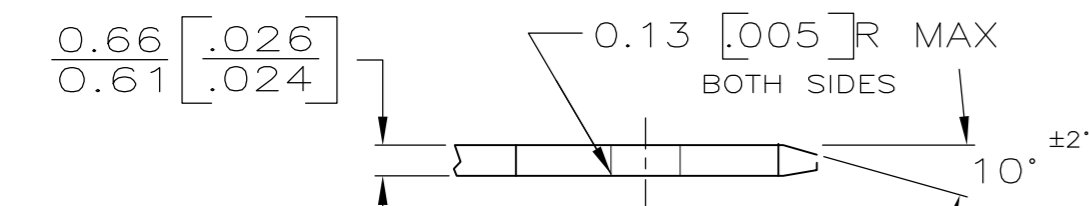
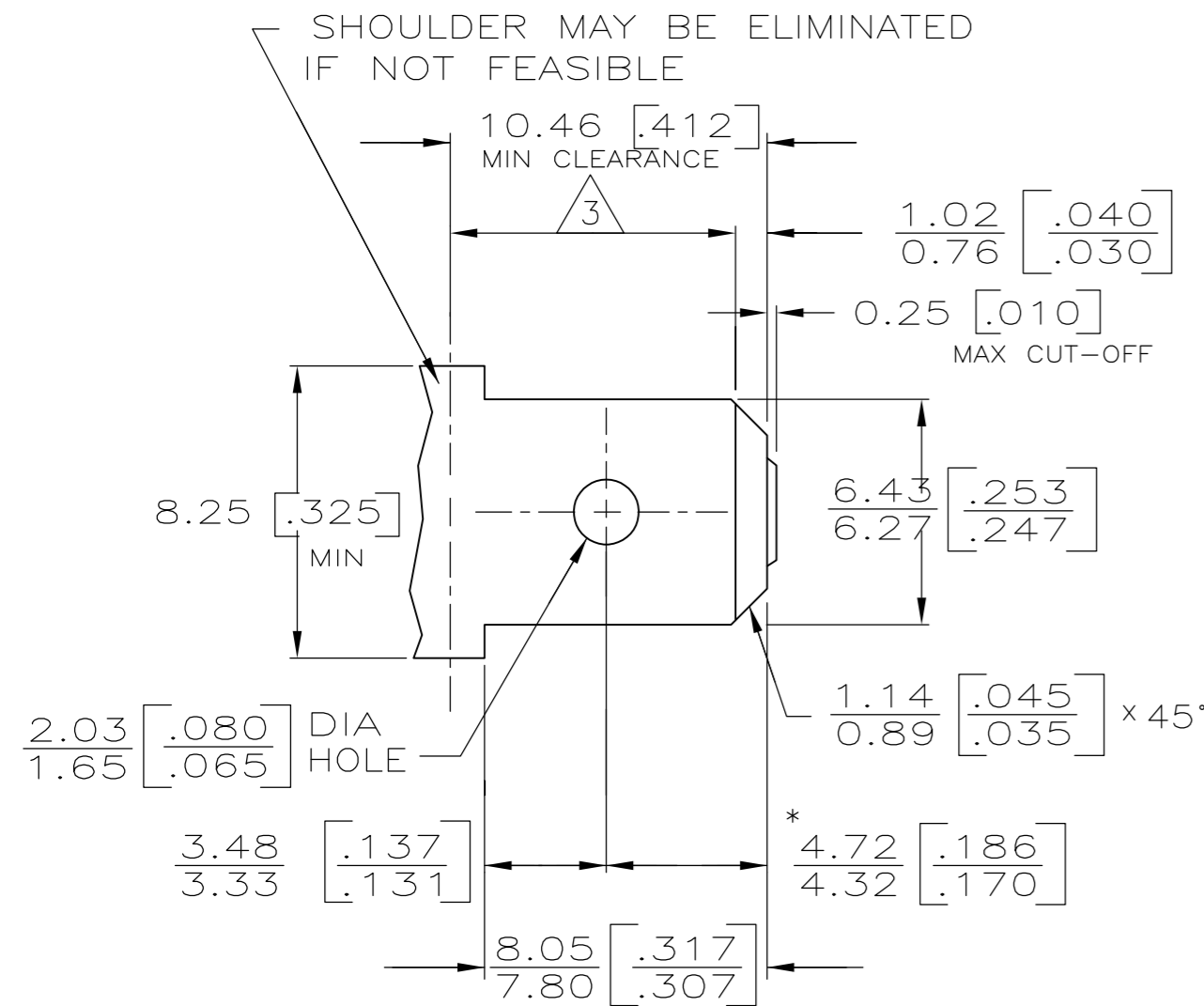


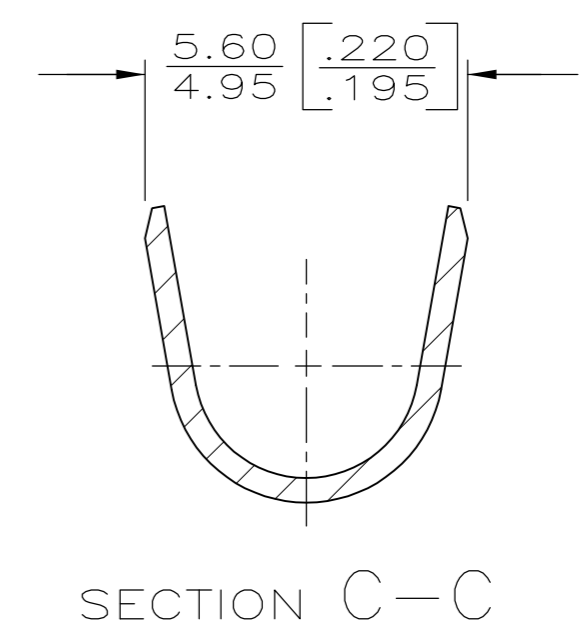
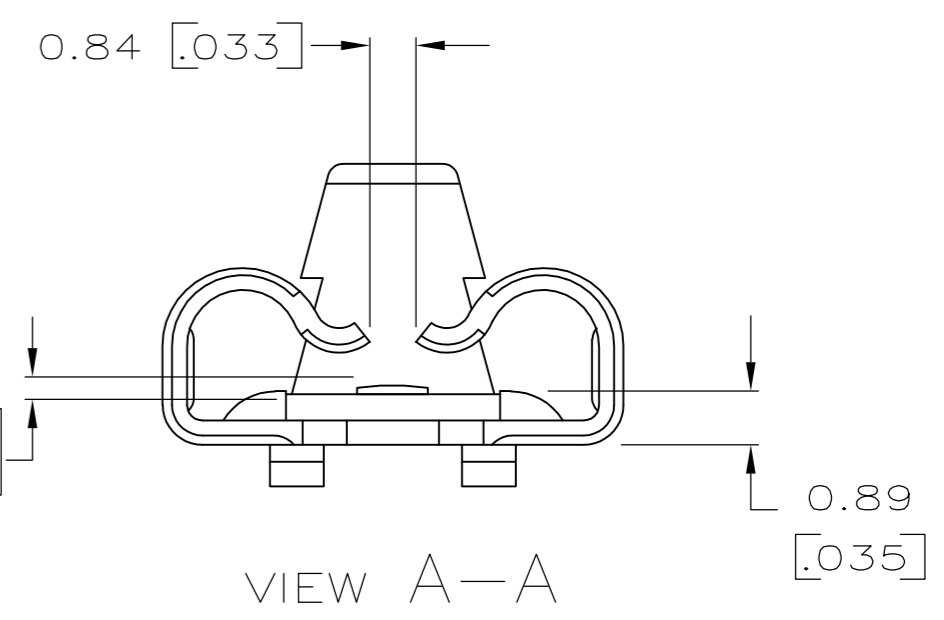
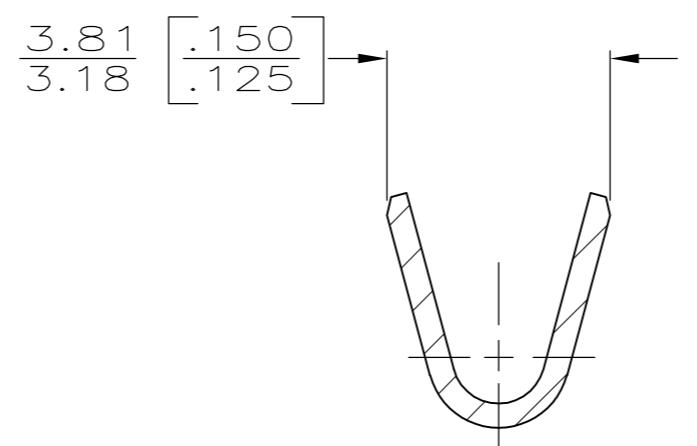
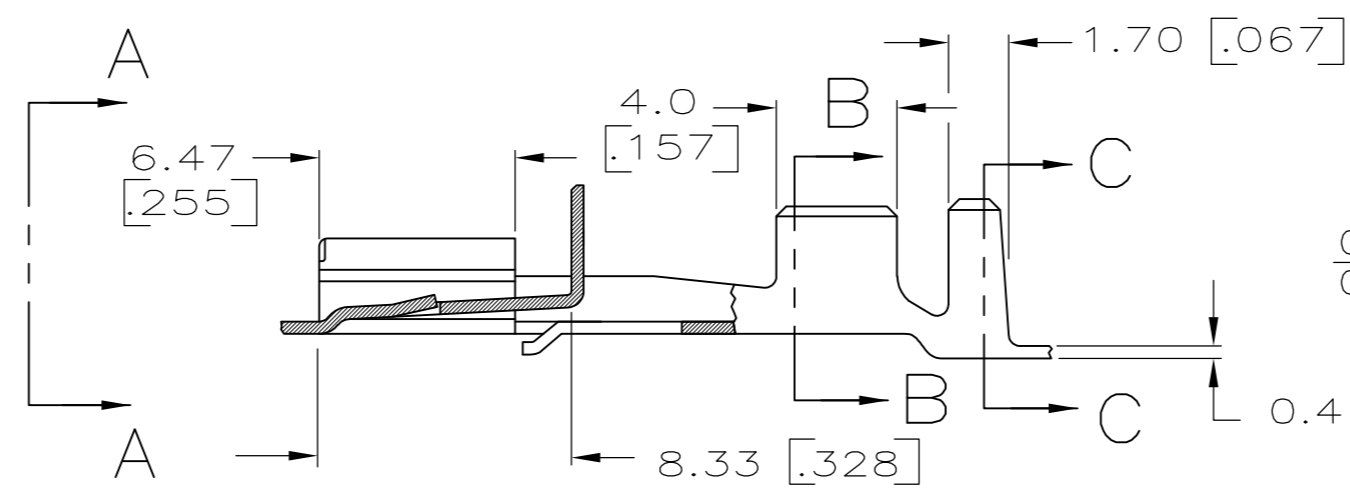
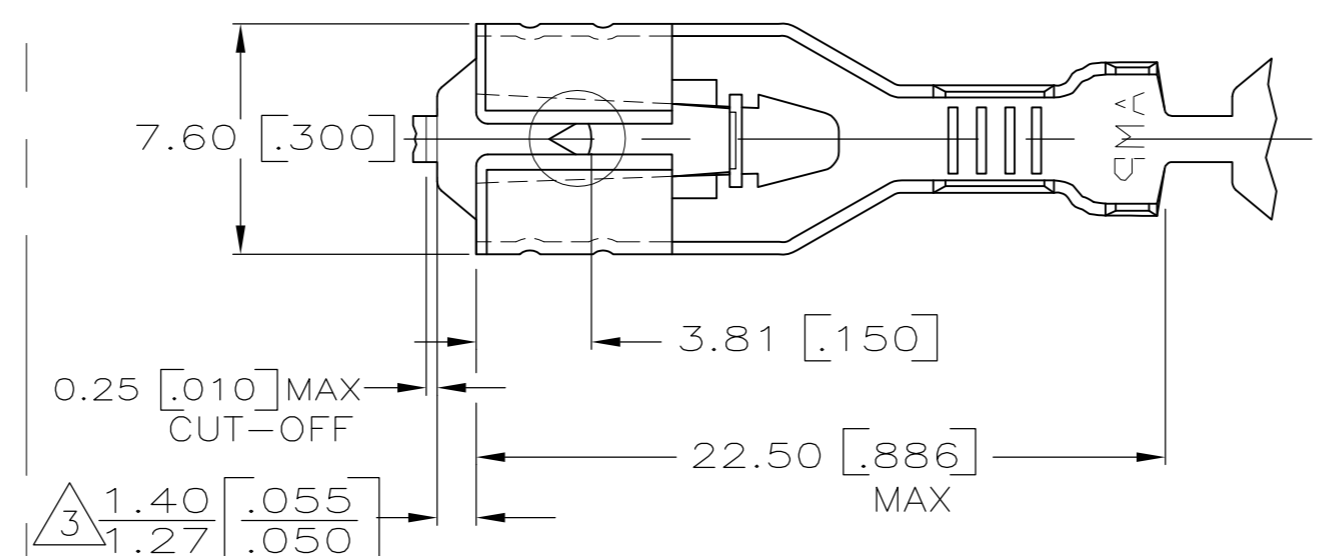
THIS DRAWING IS UNPUBLISHED. RELEASED FOR PUBLICATION
 © COPYRIGHT - By - ALL RIGHTS RESERVED.

LOC	DIST	REVISIONS			
P	LTR	DESCRIPTION	DATE	DWN	APVD
AF	50				
		D	REVISED PER ECR-12-013486	10JAN13	KH KR

SUGGESTED MATING TAB



- 1 MATL: 1/2H BRASS OR NICKEL PL STEEL.
- 2 NO BURRS PERMISSIBLE AT HOLE.
- 3 MUST BE FLAT WITHIN 0.076 [.003] OVER THIS LENGTH.
- 4 TIN PLATING IS REQUIRED ON BRASS WHEN TERMINAL TEMP. IS OVER 225°F
- 5 HOLE MUST BE SYMMETRICAL ABOUT TAB Q WITHIN 0.076 [.003]
- * TO BE USED ONLY WHEN SHOULDER IS ELIMINATED.



2 CONTINUOUS STRIP ON REELS.

3 THE 1.40 [.055] / 1.27 [.050] DIMENSION MUST BE MAINTAINED BY THE APPLICATOR CUT-OFF TO ENSURE THE PROPER LOCKING FUNCTION OF THE RECEPTACLE.

2.29-3.94 [.090-.155] DIA	[#18-#14] AWG	63809-1
INSULATION RANGE	WIRE SIZE	PART NO.

THIS DRAWING IS A CONTROLLED DOCUMENT.		DWN	JR RUTH	9/27/94	 TE Connectivity	
DIMENSIONS: mm [INCHES]		CHK	MS FEHER	9/27/94		
TOLERANCES UNLESS OTHERWISE SPECIFIED:		APVD	R KUZO	9/27/94		
0 PLC ± - 1 PLC ± - 2 PLC ± 0.25 [.010] 3 PLC ± - 4 PLC ± - ANGLES ± -		PRODUCT SPEC				
MATERIAL	BRASS	FINISH	TIN PLATE	114-2074	NAME	RECEPTACLE, POSITIVE LOCK, 6.35 [.250] SERIES
CUSTOMER DRAWING		WEIGHT	-	A2	SIZE	A2
		SCALE	5:1	00779	CAGE CODE	C=63809
		SHEET	1 of 1		DRAWING NO	
		REV	D		RESTRICTED TO	-