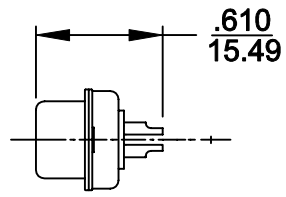
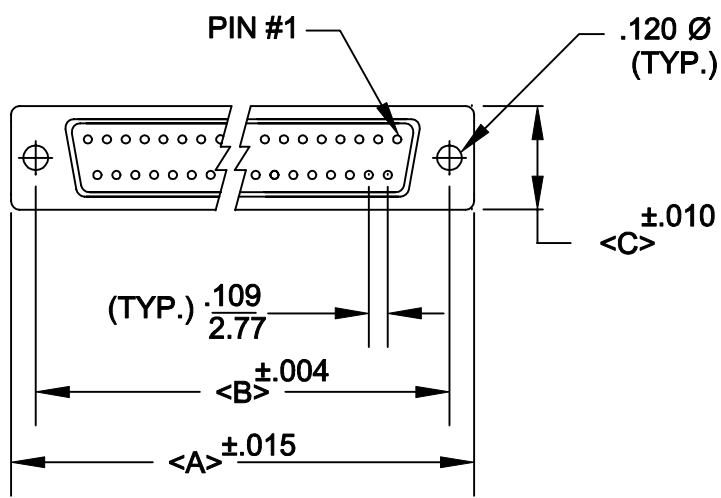
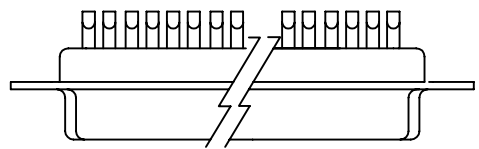


**DESCRIPTION: CABLE MOUNT FILTERED D-SUB CONNECTOR**



	A	B	C
9	1.204	.984	.480
	30.6	25.0	12.20
15	1.535	1.312	.480
	39.0	33.3	12.20
25	2.078	1.850	.480
	52.8	47.0	12.20
37	2.724	2.50	.480
	69.2	63.5	12.20

477-XXX-X02-001

**SERIES** \_\_\_\_\_

**POSITIONS** \_\_\_\_\_

009  
015  
025  
037

**GENDER** \_\_\_\_\_

1 = MALE  
2 = FEMALE

**TERMINATION** \_\_\_\_\_

0 = SOLDER CUP

**SHELL PLATING** \_\_\_\_\_

2 = TIN

**HARDWARE OPTIONS** \_\_\_\_\_

00 = NO HARDWARE

**PLATING OPTIONS** \_\_\_\_\_

1 = GOLD FLASH

**SPECIFICATIONS:**

**MATERIALS:**

SHELL: STEEL, TIN PLATED  
 INSULATOR: UL 94V-0 RATED PBTP  
 GLASS-FIBER REINFORCED

**ELECTRICALS:**

INDIVIDUAL CAPACITOR VALUE = 1000 pF  
 OTHER VALUES AVAILABLE: CONSULT FACTORY  
 CURRENT RATING: 5 AMPS  
 CONTACT RESISTANCE: <10 mOHMS  
 INSULATOR RESISTANCE: 1000 OHMS  
 VOLTAGE: 1 KV / AC  
 TEMPERATURE: -55°C TO +125°C

	THESE DRAWINGS AND SPECIFICATIONS ARE THE PROPERTY OF NorComp AND SHALL NOT BE REPRODUCED, COPIED OR USED AS THE BASIS FOR THE MANUFACTURE OF SALE OF APPARATUS WITHOUT WRITTEN PERMISSION.		DRAWN: <b>WAYNE ROBBINS</b>	DATE: <b>9-01-98</b>
	<h1>NorComp</h1>			CHECKED:
SCALE: 1:1				SHEET 1 OF 1
			DWG NO. <b>477-XXX-202-001</b>	