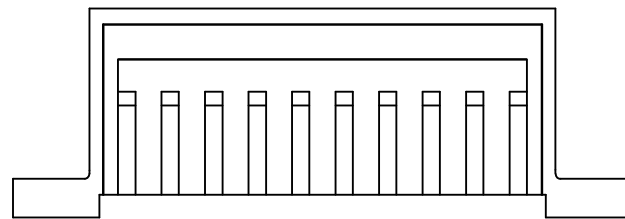
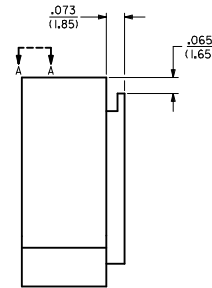
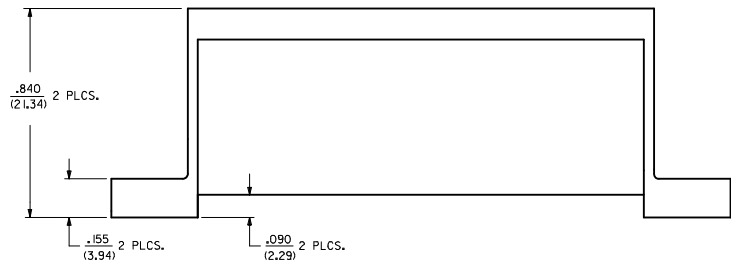
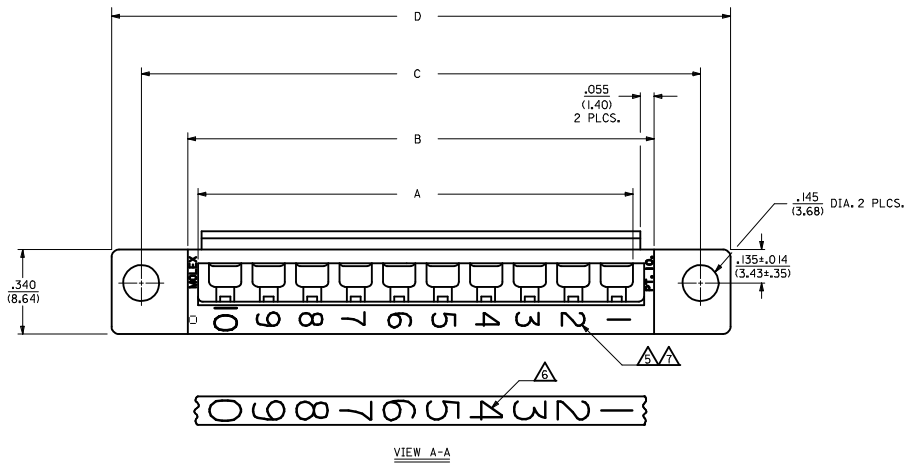
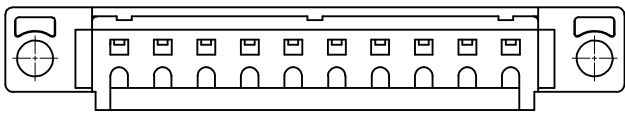


- NOTES:**
- ▲ THESE HOUSINGS ARE FOR USE WITH THE 1457-•• TERMINALS AND MAY BE SUBDIVIDED BY USING THE 1461-K KEY.
 - ▲ THE HOUSINGS ARE ONLY AVAILABLE IN 5, 10, 15, AND 20 CIRCUIT SIZES.
 - ▲ PRODUCT SPECIFICATION PS 50-36 APPLIES.
 - ▲ THESE HOUSINGS CONFORM TO U.L. AND C.S.A. REQUIREMENTS.
 - ▲ .060/(1.52) HIGH RAISED NUMERALS.
 - ▲ .125/(3.18) HIGH RECESSED NUMERALS ON A MATTE BACKGROUND.
 - ▲ .09/(2.3) HIGH INK STAMPED NUMERALS.



MATERIAL:
 POLYESTER, UNFILLED, 94V-0.
 COLOR: BLACK.
 (REF.: SMES 128C-D)



MODIFY COUR OUTS IEC NO. UCF2005-2756 DRWN:SBARRA 2005/09/29 CHYK:BARBER 2005/10/10 APPR:SMILLER 2005/10/12	QUALITY SYMBOLS ▽=0 ▽=0	GENERAL TOLERANCES (UNLESS SPECIFIED)		DIMENSION STYLE IN/MM		SCALE 4:1	DESIGN UNITS INCH	THIRD ANGLE PROJECTION	
		4 PLACES ± --- ± ---	mm	INCH	DRAWN BY	DATE	TITLE		
		3 PLACES ± --- ± .010			AFG	95/12/18	HOUSING, COMMONING		
		2 PLACES ± 0.25 ± .014					[.090/(2.29) OFFSET]		
		1 PLACE ± 0.35 ± ---			APPROVED BY	DATE	MOLEX INCORPORATED		
		ANGULAR ±1/2°			DATE	95/12/18	MOLEX INCORPORATED		
		DRAFT WHERE APPLICABLE MUST REMAIN WITHIN DIMENSIONS			MATERIAL NO.	SEE TABLE	DOCUMENT NO.	SD-1461-*	
					SIZE	D	THIS DRAWING CONTAINS INFORMATION THAT IS PROPRIETARY TO MOLEX INCORPORATED AND SHOULD NOT BE USED WITHOUT WRITTEN PERMISSION		

PART NO.	ENG. NO.	NO. CKTS.	DIM. A	DIM. B	DIM. C	DIM. D
07-01-8203	1461-20W	20	3.50 (88.9)	3.63 (92.2)	4.00 (101.6)	4.24 (107.7)
07-01-8153	1461-15W	15	2.62 (66.5)	2.75 (69.9)	3.13 (79.5)	3.37 (85.6)
07-01-8103	1461-10W	10	1.750 (44.45)	1.875 (47.63)	2.250 (57.15)	2.49 (63.2)
07-01-8053	1461-5W	5	.875 (22.23)	1.000 (25.40)	1.375 (34.93)	1.515 (41.02)



1461 INK STAMPED HOUSINGS								
BEFORE INK STAMP		AFTER INK STAMP		NO. CKTS.	DIM. A	DIM. B	DIM. C	DIM. D
PART NO.	ENG. NO.	PART NO.	ENG. NO.					
007-01-8202	1461-200	007-01-8201	1461-20E	20	3.50 (88.9)	3.63 (92.2)	4.00 (101.6)	4.24 (107.7)
007-01-8152	1461-150	007-01-8151	1461-15E	15	2.62 (66.5)	2.75 (69.9)	3.13 (79.5)	3.37 (85.6)
007-01-8102	1461-100	007-01-8101	1461-10E	10	1.750 (44.45)	1.875 (47.63)	2.250 (57.15)	2.49 (63.2)
007-01-8052	1461-50	007-01-8051	1461-5E	5	.875 (22.23)	1.000 (25.40)	1.375 (34.93)	1.515 (41.02)

1461 SPECIAL INK STAMPED HOUSINGS CHART							
BEFORE INK STAMP		AFTER INK STAMP		NO. CKTS.	CIRCUIT NUMERALS		
PART NO.	ENG. NO.	PART NO.	ENG. NO.				
007-01-8102	1461-100	007-01-8104	1461-10-1F	10	11	THRU 20	
		007-01-8105	1461-10-2F	10	21	THRU 30	
		007-01-8106	1461-10-3F	10	31	THRU 40	
007-01-8102	1461-150	007-01-8104	1461-15-1F	15	16	THRU 30	
		007-01-8105	1461-15-2F	15	31	THRU 45	
		007-01-8106	1461-15-3F	15	46	THRU 60	
007-01-8202	1461-200	007-01-8204	1461-20-1F	20	21	THRU 40	
		007-01-8205	1461-20-2F	20	41	THRU 60	
		007-01-8206	1461-20-3F	20	61	THRU 80	

APPROVED DRAWING (SEE REV. 1) DATE: 12/18/95
 VOLVO TRUCKS INC. 1461 HOUSING, COMMONING (1.090/(2.29) OFFSET)
 DRAWN BY: J. B. B. DATE: 12/18/95
 CHECKED BY: J. B. B. DATE: 12/18/95
 ENGINEER: J. B. B. DATE: 12/18/95
 MGR: J. B. B. DATE: 12/18/95
 DATE: 12/18/95
 SHEET NO. 4 OF 4
 TITLE: HOUSING CHART 50-1461
 DATE: 12/18/95
 DRAWN BY: J. B. B.
 CHECKED BY: J. B. B.
 ENGINEER: J. B. B.
 MGR: J. B. B.