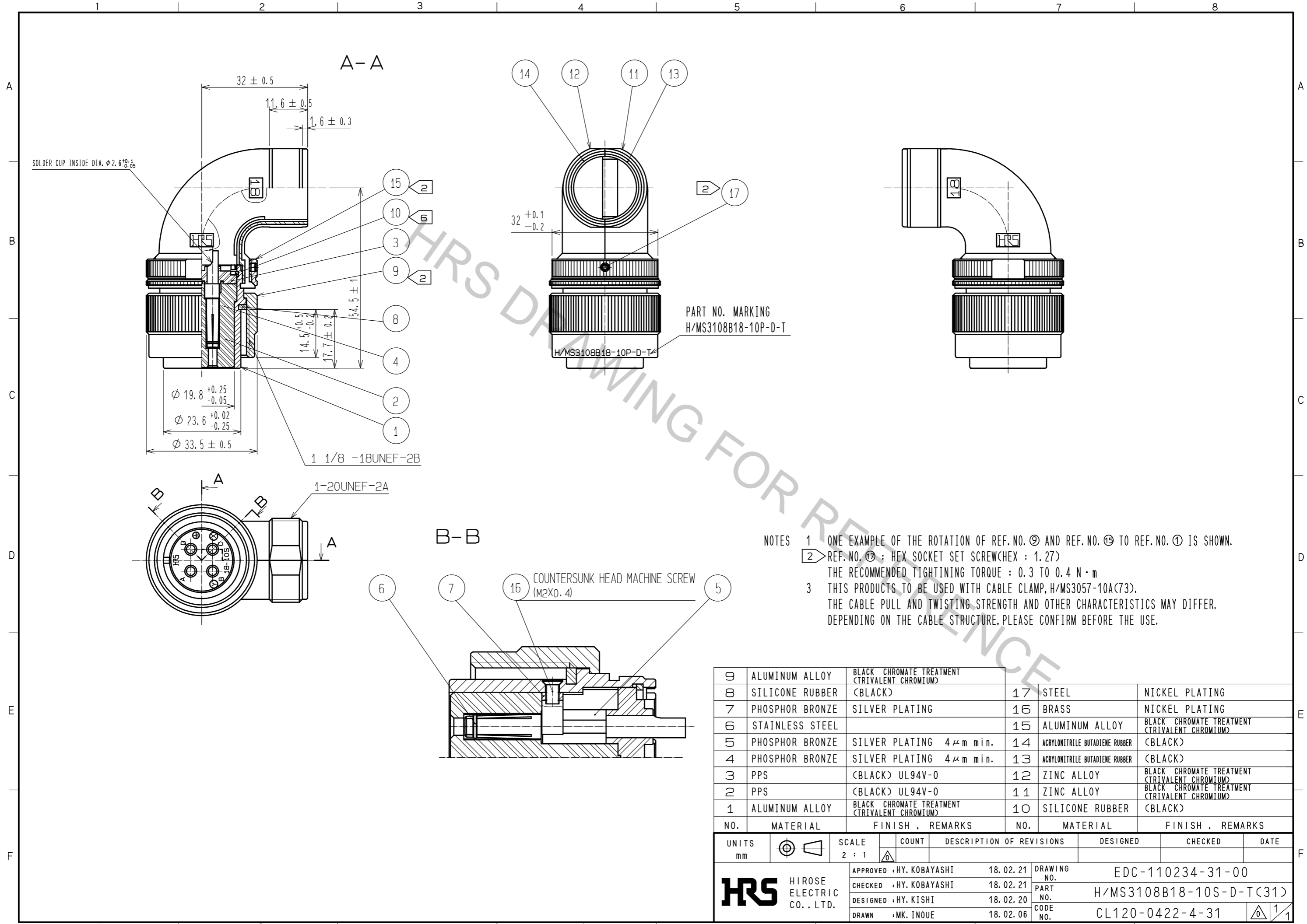


Aug.1.2018 Copyright 2018 HIROSE ELECTRIC CO., LTD. All Rights Reserved.
 In case that the application demands a high level of reliability, such as automotive,
 please contact a company representative for further information.



- NOTES
- ONE EXAMPLE OF THE ROTATION OF REF. NO. ⑨ AND REF. NO. ⑩ TO REF. NO. ① IS SHOWN.
 - REF. NO. ⑩ : HEX SOCKET SET SCREW(HEX : 1.27)
 THE RECOMMENDED TIGHTENING TORQUE : 0.3 TO 0.4 N·m
 - THIS PRODUCTS TO BE USED WITH CABLE CLAMP, H/MS3057-10A(73).
 THE CABLE PULL AND TWISTING STRENGTH AND OTHER CHARACTERISTICS MAY DIFFER,
 DEPENDING ON THE CABLE STRUCTURE. PLEASE CONFIRM BEFORE THE USE.

9	ALUMINUM ALLOY	BLACK CHROMATE TREATMENT (TRIVALENT CHROMIUM)	17	STEEL	NICKEL PLATING
8	SILICONE RUBBER	(BLACK)	16	BRASS	NICKEL PLATING
7	PHOSPHOR BRONZE	SILVER PLATING	15	ALUMINUM ALLOY	BLACK CHROMATE TREATMENT (TRIVALENT CHROMIUM)
6	STAINLESS STEEL		14	ACRYLONITRILE BUTADIENE RUBBER	(BLACK)
5	PHOSPHOR BRONZE	SILVER PLATING 4 μm min.	13	ACRYLONITRILE BUTADIENE RUBBER	(BLACK)
4	PHOSPHOR BRONZE	SILVER PLATING 4 μm min.	12	ZINC ALLOY	BLACK CHROMATE TREATMENT (TRIVALENT CHROMIUM)
3	PPS	(BLACK) UL94V-0	11	ZINC ALLOY	BLACK CHROMATE TREATMENT (TRIVALENT CHROMIUM)
2	PPS	(BLACK) UL94V-0	10	SILICONE RUBBER	(BLACK)
1	ALUMINUM ALLOY	BLACK CHROMATE TREATMENT (TRIVALENT CHROMIUM)			
NO.	MATERIAL	FINISH . REMARKS	NO.	MATERIAL	FINISH . REMARKS

UNITS mm		SCALE 2 : 1	COUNT 	DESCRIPTION OF REVISIONS	DESIGNED	CHECKED	DATE
HIROSE ELECTRIC CO., LTD.				APPROVED : HY. KOBAYASHI 18.02.21 CHECKED : HY. KOBAYASHI 18.02.21 DESIGNED : HY. KISHI 18.02.20 DRAWN : MK. INOUE 18.02.06	DRAWING NO. EDC-110234-31-00 PART NO. H/MS3108B18-10S-D-T(31) CODE NO. CL120-0422-4-31		