

NOTES:

1. MATERIALS AND FINISHES:

- CONTACT - BRASS - WHITE BRONZE PLATED
- BODY - BRASS - WHITE BRONZE PLATED
- SLEEVE - BRASS - WHITE BRONZE PLATED
- FERRULE - COPPER - WHITE BRONZE PLATED
- CAP - BRASS - WHITE BRONZE PLATED
- OUTER CONTACT - PHOSPHOR BRONZE - WHITE BRONZE PLATED
- MALE CONTACT - BRASS - GOLD PLATED
- INSULATOR - PTFE

2. PHYSICAL:

- A. OPERATING TEMPERATURE = -65°C to +165°C
- B. INTERFACE = PER 349-50692
- C. CONTACT RETENTION = 6.0 LBS. AXIAL

3. ELECTRICAL:

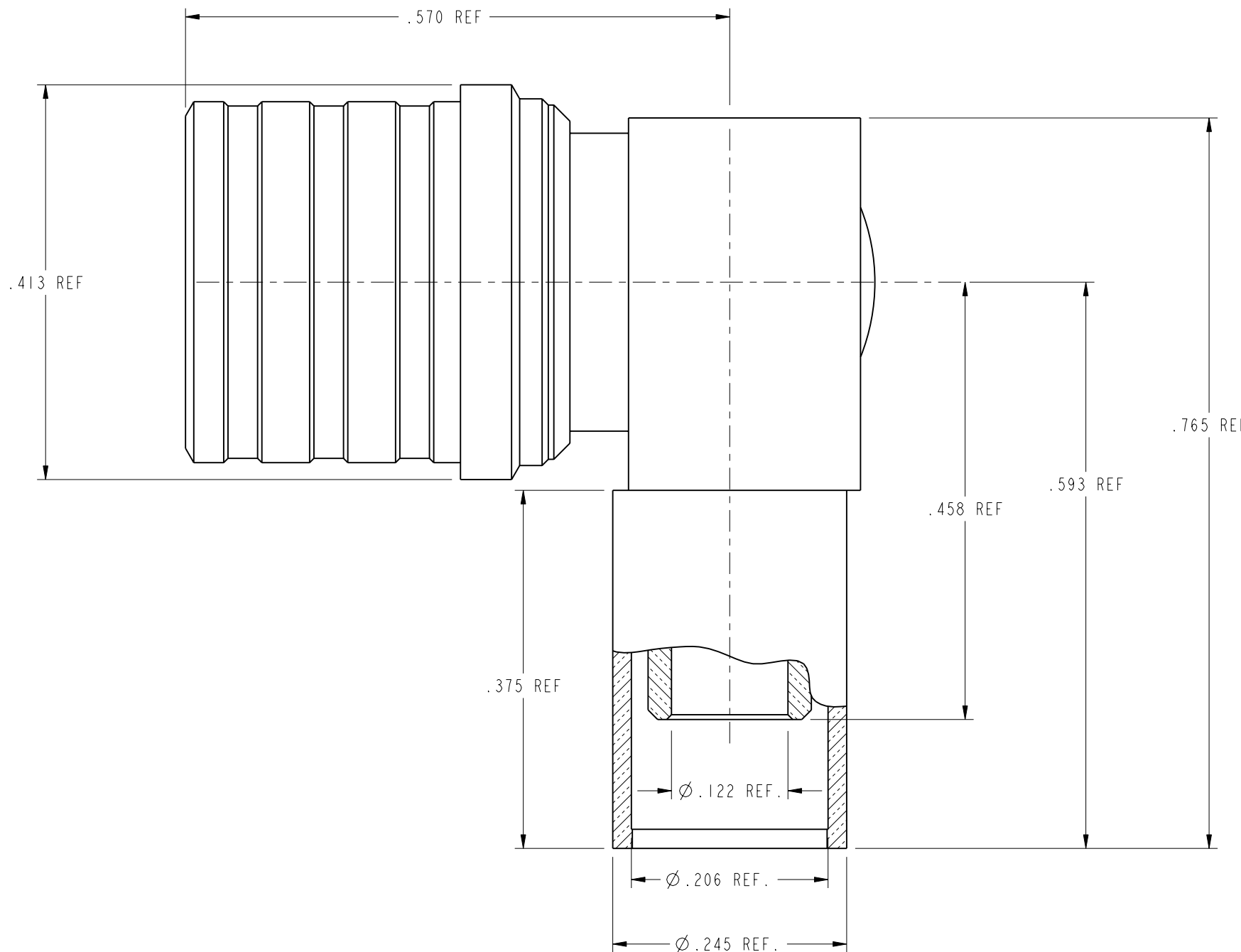
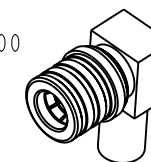
- A. FREQUENCY RANGE = DC to 6 GHz
- B. VSWR = 1.15 + .02F

4. CABLE ASSEMBLY INSTRUCTIONS PER:

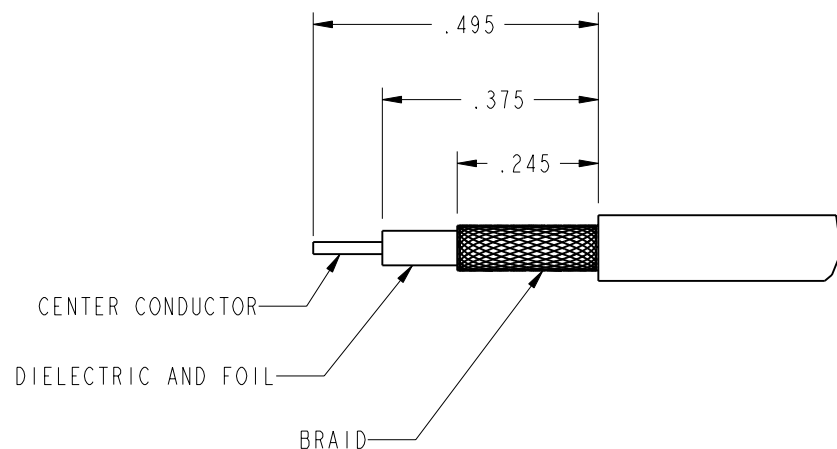
- A. TRIM CABLE AS SHOWN
- B. INSERT CABLE INTO R/A ENTRY W/ BRAID OVER KNURLED AREA, FOIL UNDER
- C. CRIMP FERRULE W/ .213 HEX TOOL
- D. SOLDER CENTER CONDUCTOR TO CONTACT THROUGH ACCESS HOLE
- E. DEPRESS EXPANSION CAP IN ACCESS HOLE

930-110P-51A		REVISIONS			
DRAWING NO.	REV	DESCRIPTION	DATE	ECO	APPR
THIRD ANGLE PROJ.	A	RELEASE TO MFG.	5/9/03	44465	KJC
	B	SEE SHEET 2.	5/15/03	44473	

SCALE 1.000



**RECOMMENDED CABLE STRIPPING DIMENSIONS**



**CUSTOMER OUTLINE DRAWING**  
ALL OTHER SHEETS ARE FOR INTERNAL USE ONLY

UNLESS OTHERWISE SPECIFIED, DIMENSIONS ARE IN INCHES AND TOLERANCES ARE: 2 PLACE DECIMAL ±.015 (0,381 mm) 3 PLACE DECIMAL ±.005 (0,127 mm) ANGLES ± 1°	MATERIAL	DRAWN K. CAPOZZI	DATE 3/24/03	TITLE <b>QMA 50 OHM R/A PLUG FOR RG-58 TYPE CABLE</b>		<b>Amphenol</b> Amphenol Corporation Communication and Network Products Division Danbury, CT U.S.A. 06810	
	REFERENCE EAR #697 GEN #ASSYMI_QMA 615X-1839-200	ENGINEER K. CAPOZZI	DATE 3/24/03				
NOTICE - These drawings, specifications, or other data (1) are, and remain the property of Amphenol Corp. (2) must be returned upon request; and (3) are confidential and not to be disclosed to any person other than those to whom they are given by Amphenol Corp. The furnishing of these drawings, specifications, or other data by Amphenol Corp., or to any other person to anyone for any purpose is not to be regarded by implication or otherwise in any manner licensing, granting rights or permitting such holder or any other person to manufacture, use or sell any product, process or design, patented or otherwise, that may in any way be related to or disclosed by said drawings, specifications, or other data.		CAD FILE I:\QMA\930-110P-51A	CODE ID 74868	DWG SIZE B	DRAWING NO. 930-110P-51A	SCALE: 7.0:1	SHEET 2 OF 2
						REV B	