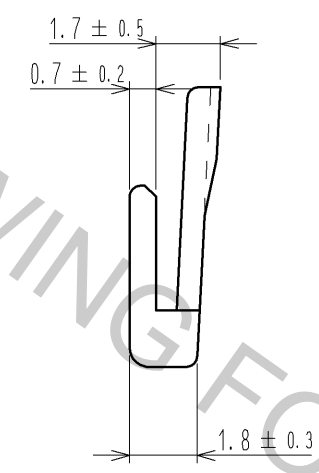
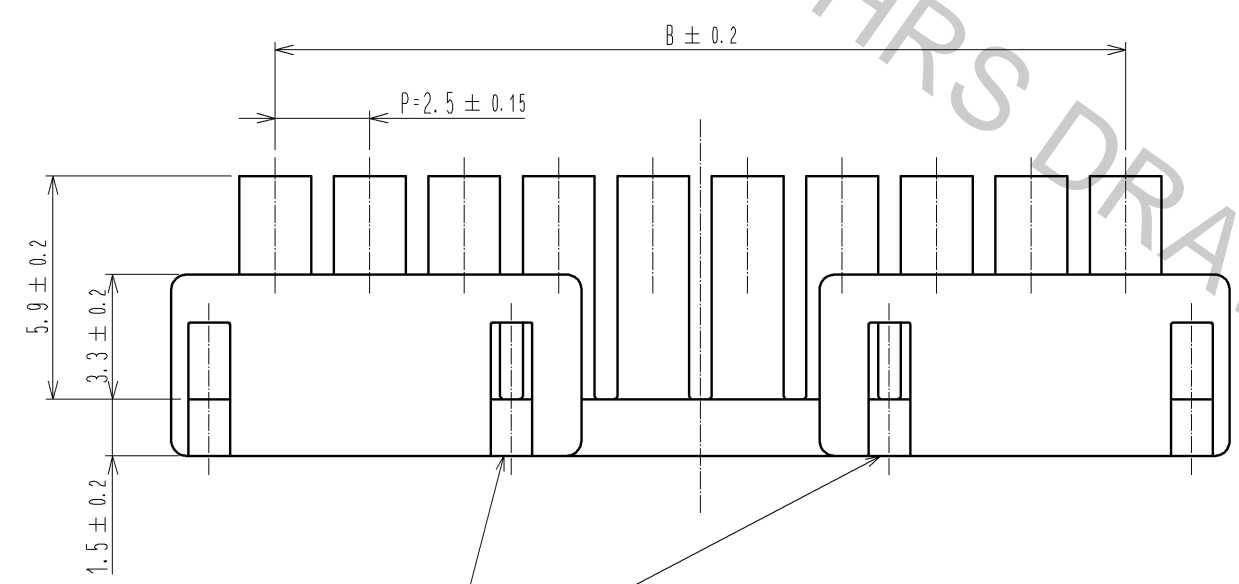
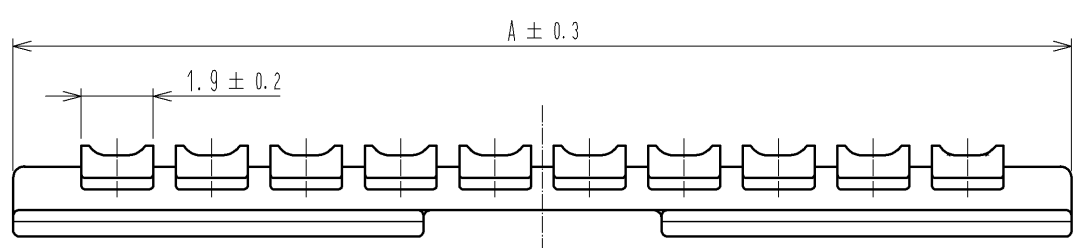


Apr.1.2017 Copyright 2017 HIROSE ELECTRIC CO., LTD. All Rights Reserved.



| PART NO. | CL NO. | CONTACT NO. | A | B |
|-----------------|------------|-------------|------|------|
| DF1E- 2RS/P-2.5 | 541-0971-6 | 2 | 8 | 2.5 |
| DF1E- 3RS/P-2.5 | 541-0972-9 | 3 | 10.5 | 5 |
| DF1E- 4RS/P-2.5 | 541-0973-1 | 4 | 13 | 7.5 |
| DF1E- 5RS/P-2.5 | 541-0974-4 | 5 | 15.5 | 10 |
| DF1E- 6RS/P-2.5 | 541-0975-7 | 6 | 18 | 12.5 |
| DF1E- 7RS/P-2.5 | 541-0976-0 | 7 | 20.5 | 15 |
| DF1E- 8RS/P-2.5 | 541-0977-2 | 8 | 23 | 17.5 |
| DF1E- 9RS/P-2.5 | 541-0978-5 | 9 | 25.5 | 20 |
| DF1E-10RS/P-2.5 | 541-0979-8 | 10 | 28 | 22.5 |
| DF1E-11RS/P-2.5 | 541-0980-7 | 11 | 30.5 | 25 |
| DF1E-12RS/P-2.5 | 541-0981-0 | 12 | 33 | 27.5 |
| DF1E-13RS/P-2.5 | 541-0982-2 | 13 | 35.5 | 30 |
| DF1E-14RS/P-2.5 | 541-0983-5 | 14 | 38 | 32.5 |
| DF1E-15RS/P-2.5 | 541-0984-8 | 15 | 40.5 | 35 |

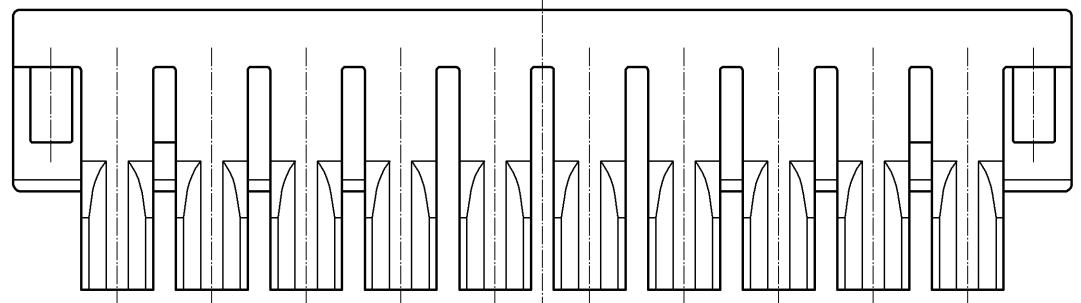
NUMBER OF CONTACT

10

CAVITY No.

1

NOTE 1 THE CONFIGURATION SHOWN IN THE FIGURE IS APPLICABLE TO 6 POS. OR MORE.



| NO. | MATERIAL | FINISH . REMARKS | NO. | MATERIAL | FINISH . REMARKS |
|-----|-----------|------------------|-----|-----------------|------------------|
| 1 | POLYAMIDE | | | BLACK . UL94V-0 | |

| UNITS | SCALE | COUNT | DESCRIPTION OF REVISIONS | DESIGNED | CHECKED | DATE |
|--------------------------|-------|-------|--------------------------|----------------------------|---------|------|
| mm | 5 : 1 | △ | | | | |
| APPROVED : TS. SAKATA | | | 08.05.15 | DRAWING NO. EDC3-161948-01 | | |
| CHECKED : TS. KUMAZAWA | | | 08.05.15 | PART NO. DF1E-*RS/P-2.5 | | |
| DESIGNED : TH. YOSHIZAWA | | | 08.05.14 | CODE NO. CL541- | | |
| DRAWN : TH. YOSHIZAWA | | | 08.05.14 | △ 1/1 | | |