

HIGH DENSITY DOUBLE ROW LED FLEX RIBBON

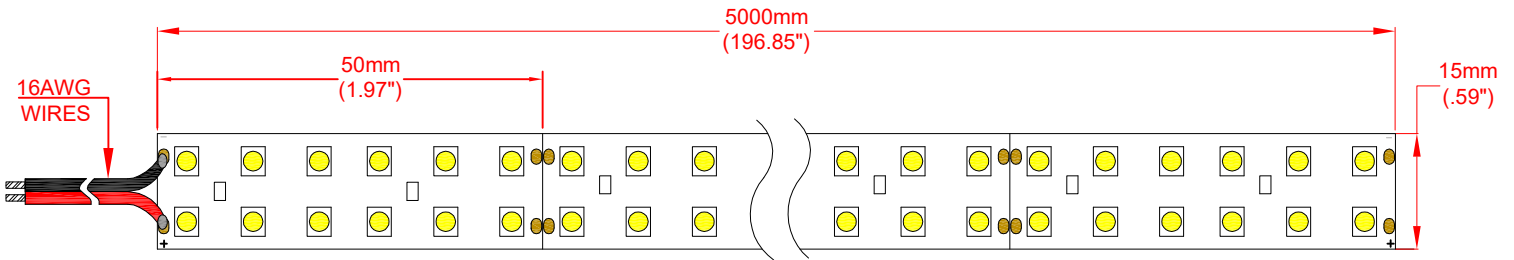
Features

VOLTAGE: 24V DC
 CURRENT: 3.4 Amps
 LED VIEWING ANGLE (2 θ 1/2): 120°

STANDARD PACKAGING:
 5 METER REEL (1200 LED'S)

OPTIONAL PACKAGING:
 INDIVIDUAL 500mm Sections (120 LED's)
 Order as ZFS-155000-24CW/SEC

NOTE: Individual sections ARE NOT supplied with insulated wire connection.



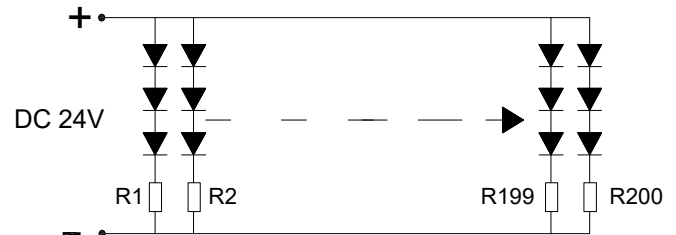
Absolute Maximum Rating at Ta = 25°C

Parameter	Symbol	Rating	Units
Forward Current	IF	3.4	A
Power Dissipation	PD	82	W
Electrostatic Discharge	ESD	800	V
Operating Temperature	Topr	-20~+50	°C
Storage Temperature	Tstg	-30~+80	°C

Accessories

ZPS-2435 24V, 35 Watt Power Supply
 ZPS-2460 24V, 60 Watt Power Supply
 ZDM-01 PWM LED Dimmer

Note: ZPS-2435 and ZPS-2460 require use of wire nuts for connections.



Electro-Optical Characteristics (Ta = 25°C)

JKL Part Number	Color	Number of LED's	Input Voltage (V DC)	Power (W)	Current (A)	Radiance Angle	CCT (K)	Lumen Flux (lm)
ZFS-155000-24CW	Cool White	1200	24	82	3.4	120°	5000°K	6925

Note

Please refer to JKL Application Sheet JKL-AS-ZFS-LED FLEX for Installation and Power Recommendations.



ATTENTION

OBSERVE PRECAUTION FOR HANDLING ELECTROSTATIC DISCHARGE SENSITIVE DEVICES

<p>THIRD ANGLE PROJECTION</p>			<p>METRIC DIMENSIONS ARE IN mm (INCHES)</p> <p>TOLERANCE UNLESS OTHERWISE SPECIFIED 1 PL +/- REF. 2 PL +/- REF. ANGLE +/-</p>		<h1>JKL COMPONENTS CORPORATION</h1>					
<p>DRAWN BY L. WENGSTROM</p>			<p>APP'VD BY L.R. DATE 1/8/17</p>		<p>SIZE A</p>	<p>FSCM NO. 55335</p>	<p>DRAWING NO. ZFS-155000-24CW</p>			
<p>RELEASED 1/8/17</p>			<p>- CAD DRAWING - MANUAL REVISIONS NOT PERMITTED</p>		<p>SCALE NONE</p>	<p>RELEASED DATE 1/8/17</p>	<p>REVISION DATE</p>	<p>SHEET 1 OF 1</p>		
<p>REV. NO.</p>	<p>DESCRIPTION/ECO NUMBER</p>	<p>APP'VD DATE</p>								