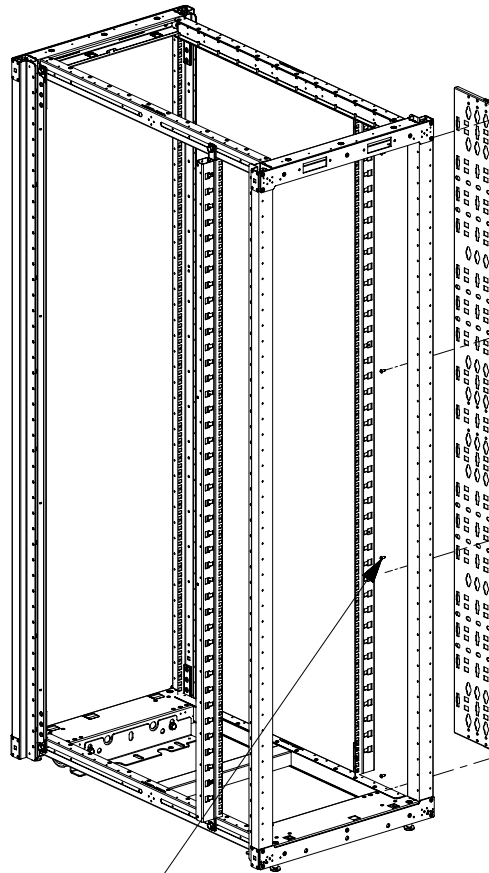
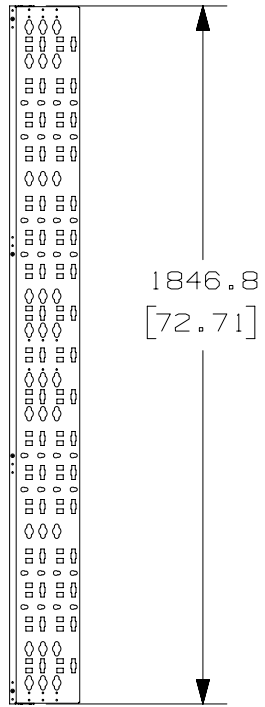
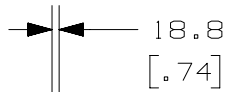
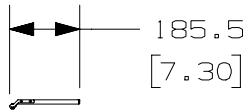


THIS COPY IS PROVIDED ON A RESTRICTED BASIS AND IS NOT TO BE USED IN ANY WAY DETRIMENTAL TO THE INTERESTS OF PANDUIT CORP.



M5 SCREW
4 PLCS

6" CABLE MANAGEMENT
BRACKET

- NOTES:
1. VISIT OUR ON-LINE CATALOG AT WWW.PANDUIT.COM FOR A LIST OF CURRENT PARTS APPLICABLE FOR USE WITH THIS PRODUCT.
 2. PRIMARY DIMENSIONS ARE IN MILLIMETERS (mm).
 3. PARTS SUPPLIED:
(1) - 6" CABLE MANAGEMENT BRACKET FL
(4) - M5 PAN HEAD SCREWS
 4. COMPATIBLE COMPONENTS: (PURCHASED SEPARATELY)
- S2LR
- S1LR
- S2DR
- S1DR

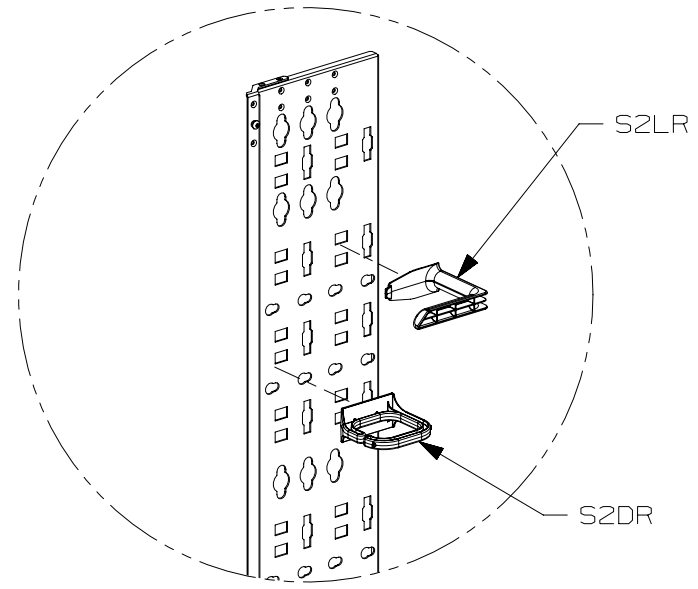
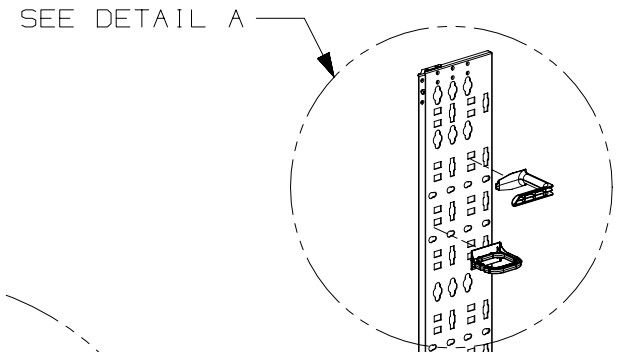
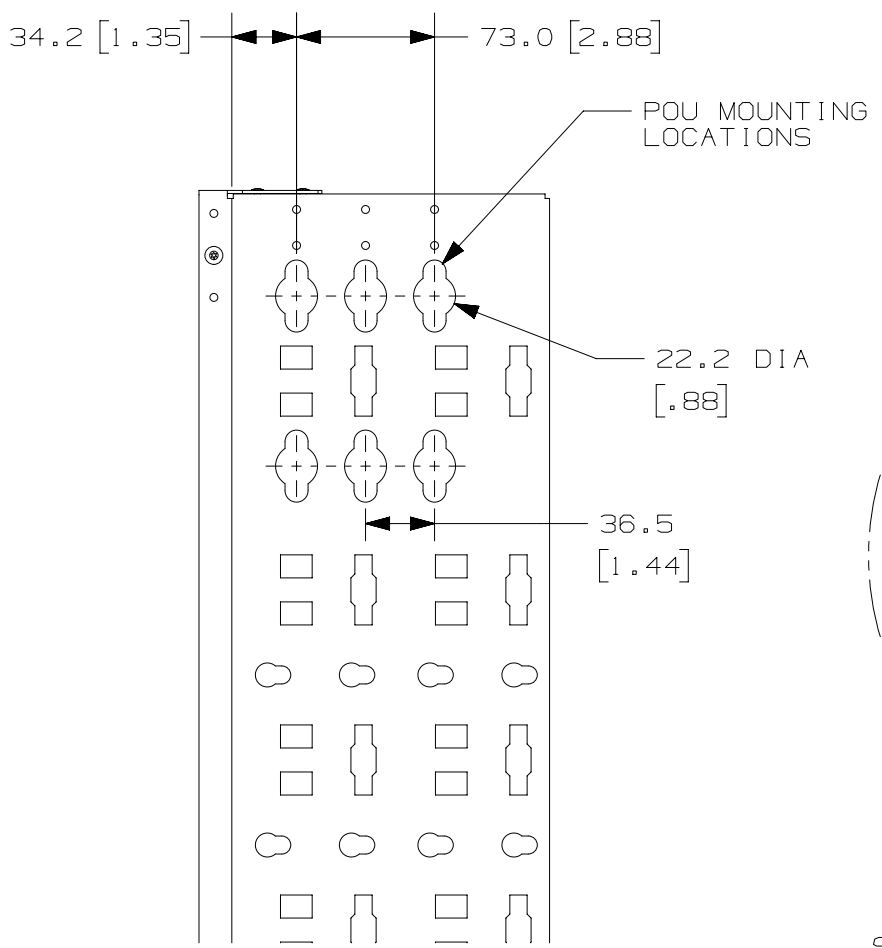
| PANDUIT P/N | WEIGHT |
|-------------|-----------------------------|
| S2BRK6 | 4.2 Kg/EACH 9.2 LBS/EACH |

| REV | DATE | BY | CHK | APR | DESCRIPTION | ECN |
|-----|----------|----------|------|------|-----------------------------------|-------------|
| 01B | 6/15/17 | MEX-JAGC | BRAP | BRAP | REVISED NOTES | V09001HQ |
| 01A | 12/18/13 | MDCS | RCHA | JDWE | HEIGHT OF PART WAS 1896.8 [74.68] | 11V231AD-DC |
| 00A | 9/26/13 | PBS | RCHA | JDWE | RELEASED TO PRODUCTION | 11V231AD-DC |

| | | | |
|---|-----------------|--------------------------------|---------------|
| TITLE 6" CABLE MANAGEMENT BRACKET FG (S2BRK6) | | CUSTOMER DRAWING | |
| ITEM REVISION NAME 11V231AD/01 | | PANDUIT | |
| DATASET FILE NAME 11V231AD_DC/01B | | | |
| DRAWING NUMBER: 11V231AD-DC | | MATERIAL: N/A | |
| THIRD ANGLE PROJECTION | | DRAWING NUMBER: 11V231AD-DC | |
| DRAWN BY PBS | DATE 9/26/13 | CHK RCHA | SCALE NONE |
| SHT 1 OF 3 | | SIZE A | |

D10100DA/20

THIS COPY IS PROVIDED ON A RESTRICTED BASIS AND IS NOT TO BE USED IN ANY WAY DETRIMENTAL TO THE INTERESTS OF PANDUIT CORP.



DETAIL A
SCALE 1:8
S1LR AND S1DR NOT SHOWN

| REV | DATE | BY | CHK | APR | DESCRIPTION | ECN |
|-----|----------|----------|------|------|--------------------------------|-------------|
| 01B | 6/15/17 | MEX-JAGC | BRAP | BRAP | SEE SHEET 1 OF 3 FOR REVISIONS | V09001HQ |
| 01A | 12/18/13 | MDCS | RCHA | JDWE | SEE SHEET 1 OF 3 FOR REVISIONS | 11V231AD-DC |
| 00A | 9/26/13 | PBS | RCHA | JDWE | SEE SHEET 1 OF 3 FOR REVISIONS | 11V231AD-DC |

| | | | | | | |
|---|--|-----------------|------------------|---------------|------------------------|--|
| TITLE 6" CABLE MANAGEMENT BRACKET FG (S2BRK6) | | | | | | |
| CUSTOMER DRAWING | | | | | | |
| ITEM REVISION NAME 11V231AD/01 | | | | | | |
| DATASET FILE NAME 11V231AD_DC/01B | | | | | | |
| DRAWING NUMBER: 11V231AD-DC | | | MATERIAL: N/A | | | |
| DRAWN BY PBS | | DATE 9/26/13 | CHK RCHA | SCALE NONE | THIRD ANGLE PROJECTION | |
| SHT 2 OF 3 | | | SIZE A | | | |

D10100DA/20

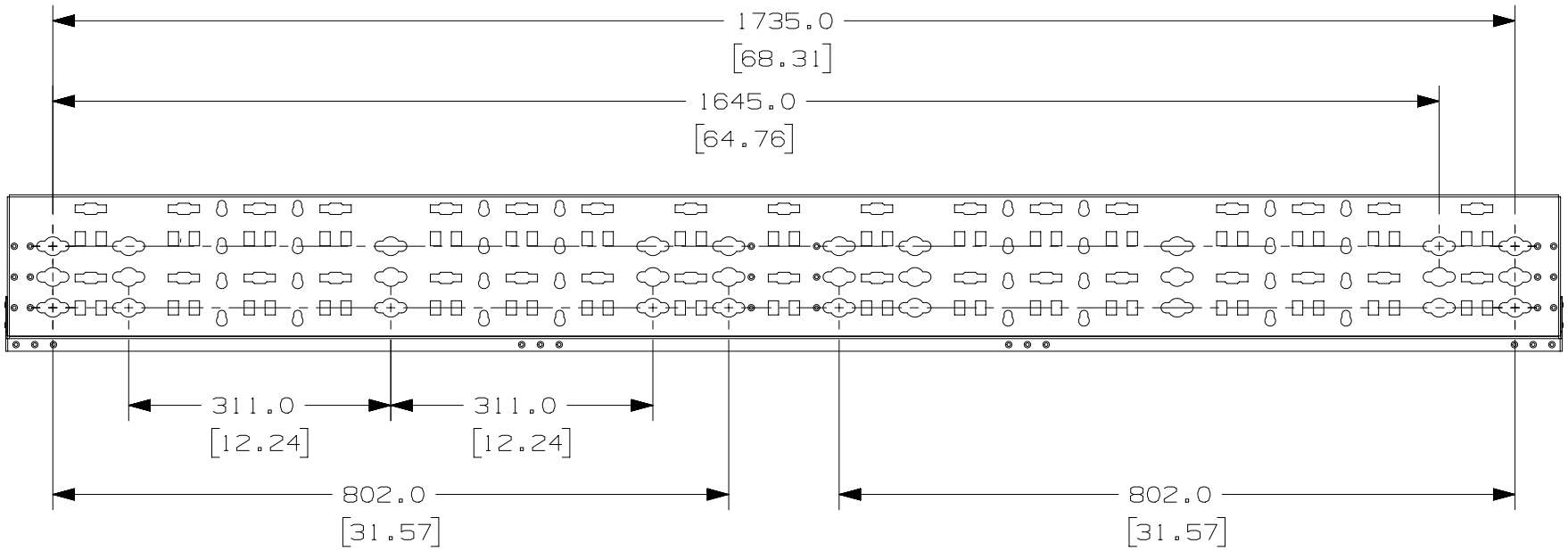
2

1

2

1

THIS COPY IS PROVIDED ON A RESTRICTED BASIS AND IS NOT TO BE USED IN ANY WAY DETRIMENTAL TO THE INTERESTS OF PANDUIT CORP.



| REV | DATE | BY | CHK | APR | DESCRIPTION | ECN |
|-----|----------|----------|------|------|--------------------------------|-------------|
| 01B | 6/15/17 | MEX-JAGC | BRAP | BRAP | SEE SHEET 1 OF 3 FOR REVISIONS | V09001HQ |
| 01A | 12/18/13 | MDCS | RCHA | JDWE | SEE SHEET 1 OF 3 FOR REVISIONS | 11V231AD-DC |
| 00A | 9/26/13 | PBS | RCHA | JDWE | SEE SHEET 1 OF 3 FOR REVISIONS | 11V231AD-DC |

| | | | |
|---|--|--------------------------------|--|
| TITLE 6" CABLE MANAGEMENT BRACKET FG (S2BRK6) | | | |
| CUSTOMER DRAWING | | | |
| ITEM REVISION NAME 11V231AD/01 | | PANDUIT | |
| DATASET FILE NAME 11V231AD_DC/01B | | | |
| DRAWN BY PBS | | MATERIAL: N/A | |
| DATE 9/26/13 | | DRAWING NUMBER: 11V231AD-DC | |
| CHK RCHA | | THIRD ANGLE PROJECTION | |
| SCALE NONE | | SHT 3 OF 3 | |
| SIZE A | | | |

D10100DA/20