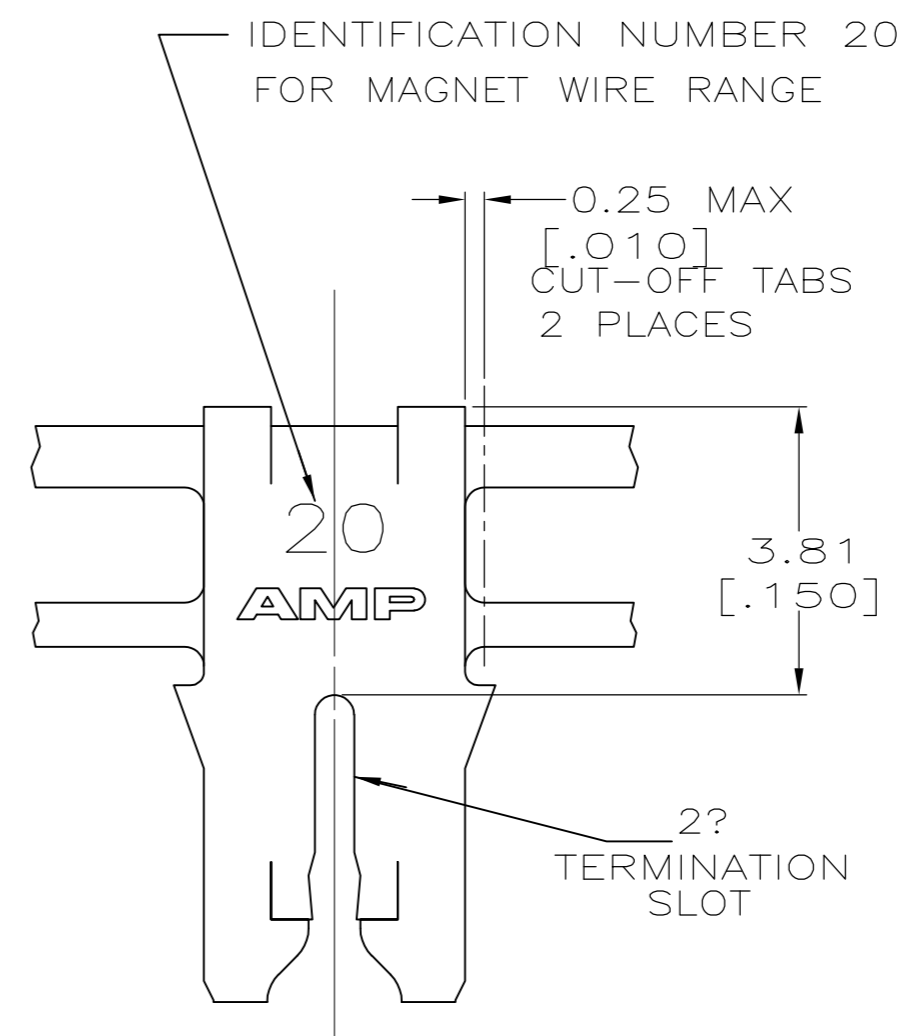
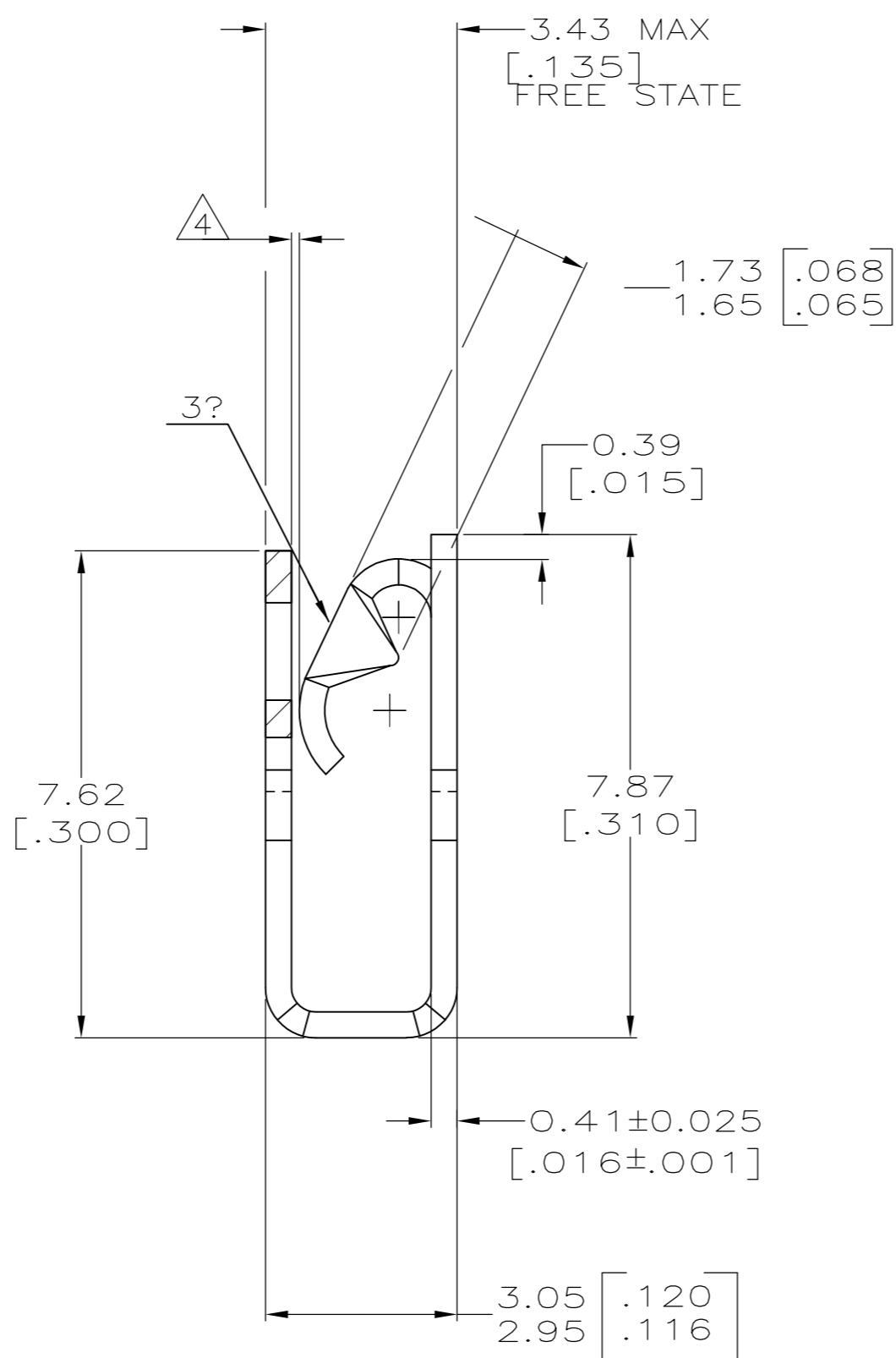
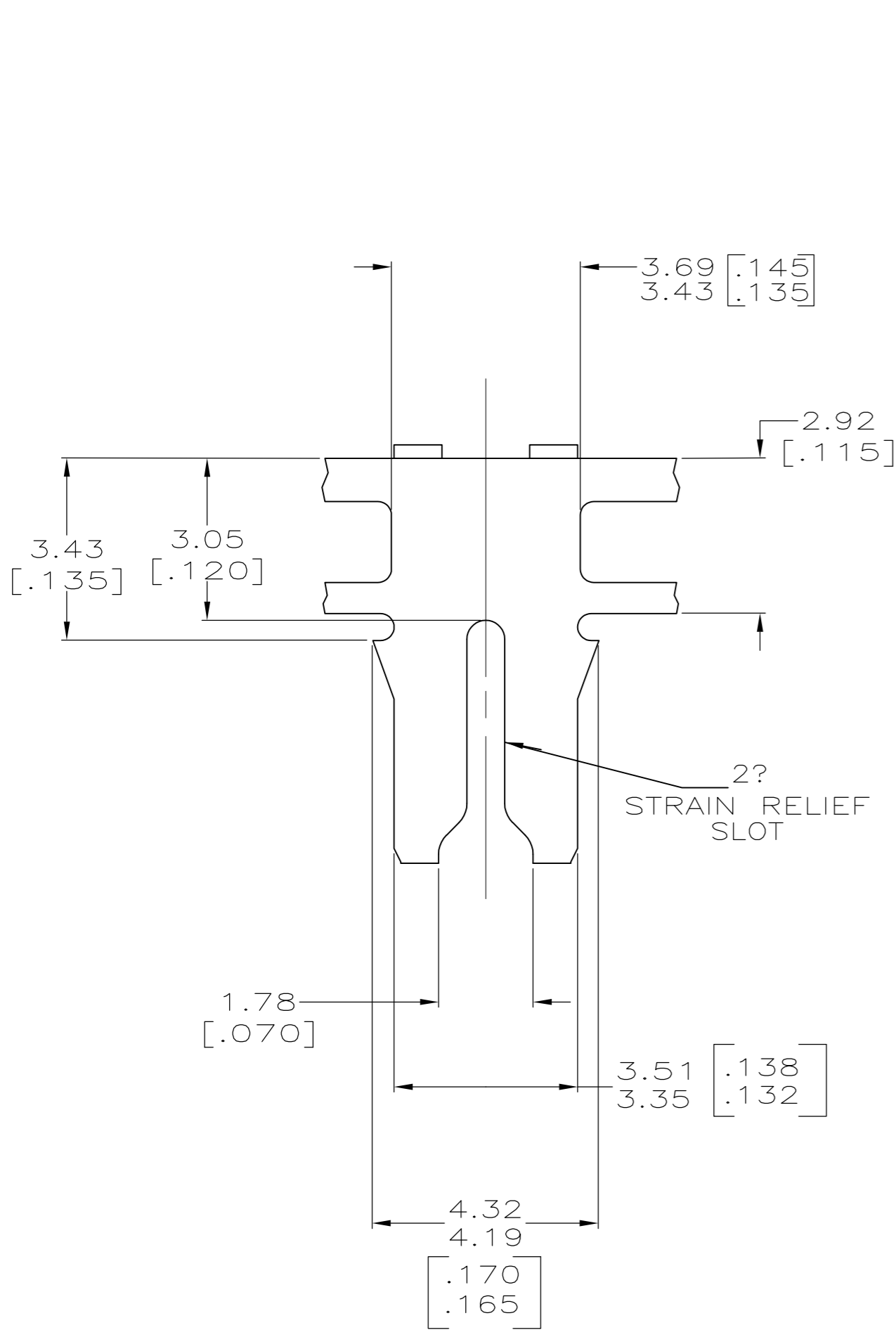
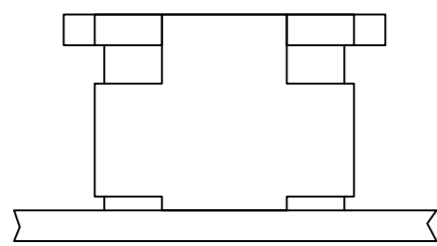


THIS DRAWING IS UNPUBLISHED. RELEASED FOR PUBLICATION .19  
 BY AMP INCORPORATED. ALL RIGHTS RESERVED.

LOC	DIST	REVISIONS			
P	LTR	DESCRIPTION	DATE	DWN	APVD
AF	50	B1	REVISED PER ECR-12-022060	26DEC12	LL FM

- 1 CONTINUOUS STRIP ON REELS WITH TERMINALS LOCATED ON 5.59±0.08 [.220±.003] CENTERS
- 2? SLOT ACCEPTS A 0.68-0.81mm [#21.5-#20] AWG COPPER MAGNET WIRE.
- 3? MATES WITH STANDARD MAG-MATE STYLED POKE-IN TAB TERMINAL.
- △4 WHEN FREE STATE IS COMPRESSED TO 3.23 [.127] DIMENSION GAP BETWEEN SPRING AND CARRIER IS TO BE 0.30 [.012] MAX.
- △5 0.002032 [.000080] MIN TIN OVER 0.00127 [.000050] MIN NICKEL UNDERPLATE.
- △6 ANTI-FRETTING LUBRICANT APPLIED.
- △7 0.00382 [.000150] MIN SILVER PLATE OVER 0.00127 [.000050] MIN NICKEL UNDERPLATE.
- △8 PRELIMINARY - NOT FOR PRODUCTION.



FINISH	MATERIAL	PART NUMBER
△7	4M BRASS	△8 1217688-4
△5	H04 PHOSPHOR BRONZE	△8 1217688-3
△5	4M BRASS	△8 1217688-2
△5	4M BRASS	1217688-1

THIS DRAWING IS A CONTROLLED DOCUMENT.

DWN MICHAEL S. FEHER 12OCT2001	AMP Incorporated Harrisburg, PA 17105-3608					
CHK KURT A. RANDOLPH 17OCT2001						
APVD KURT A. RANDOLPH 17OCT2001						
NAME KURT A. RANDOLPH						
DIMENSIONS: mm[INCHES]	TOLERANCES UNLESS OTHERWISE SPECIFIED: 0 PLC ±- 1 PLC ±- 2 PLC ±0.25[.010] 3 PLC ±- 4 PLC ±- ANGLES ±-	PRODUCT SPEC 108-2012	SPECIAL LEAF CONTACT, 300 SERIES MAG-MATE™			
MATERIAL SEE TABLE	FINISH SEE TABLE	APPLICATION SPEC 114-2046	SIZE A2	CAGE CODE 00779	DRAWING NO 1217688	RESTRICTED TO -
CUSTOMER DRAWING			SCALE 10:1	SHEET 1	OF 1	REV B1

1217688

A