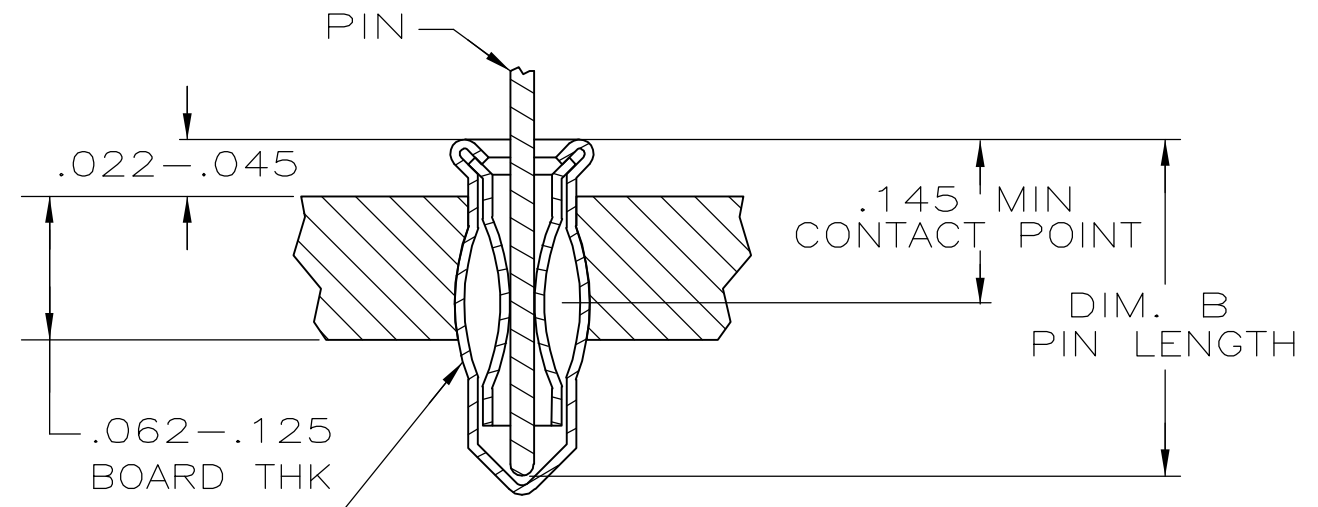
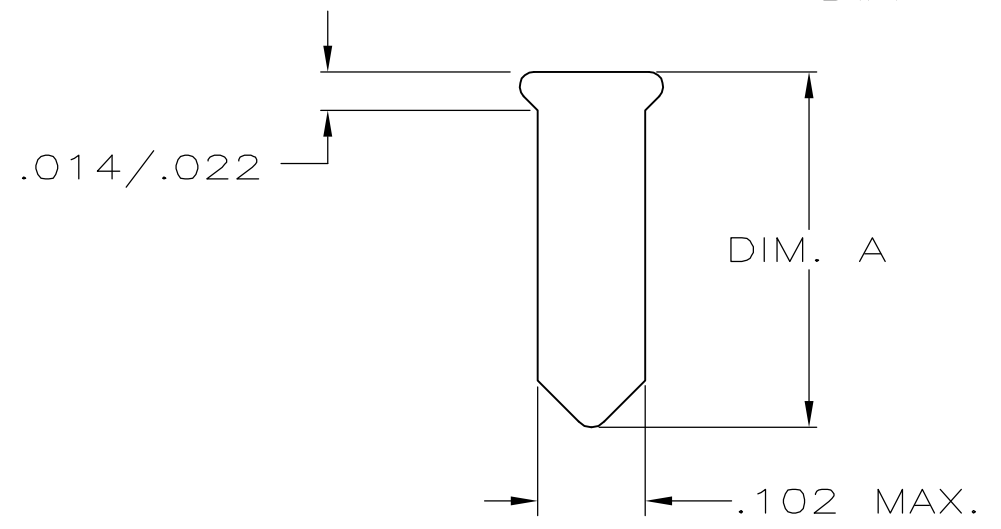
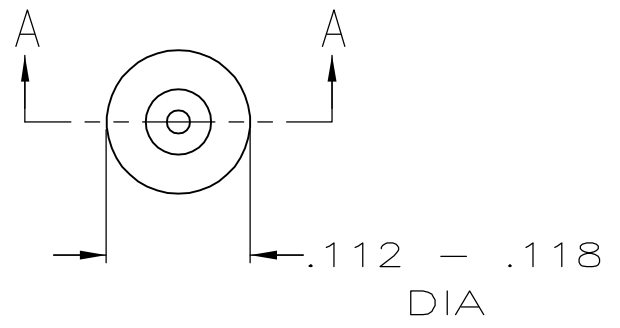


THIS DRAWING IS UNPUBLISHED. RELEASED FOR PUBLICATION
 © COPYRIGHT - BY TYCO ELECTRONICS CORPORATION. ALL RIGHTS RESERVED.

| | | | | | | | |
|-----|------|-----------|-----|---------------------------|---------|-----|------|
| LOC | DIST | REVISIONS | | | | | |
| AG | 53 | P | LTR | DESCRIPTION | DATE | DWN | APVD |
| | | | A | REVISED PER ECO-06-001742 | 31JAN06 | JDP | JGH |



MSS INSERTION MACHINE CAPABLE OF OVALIZING SOCKET FOR RETENTION IN PC BOARD WITH .104±.003 DIA HOLE PRIOR TO SOLDERING OPERATION

1. MATERIAL:
 EYELET: COPPER PER ASTM B 152
 SPRING: BERYLLIUM COPPER PER ASTM B 194
2. TIN PLATE PER ASTM B 545 .000100 MIN THICK.
3. GOLD PLATE PER ASTM B 488 .000030 MIN THICK OVER NICKEL PLATE PER QQ-N-2900N CONTACT AREA.
4. TO INSURE 1/2 OZ MIN RETENTION DO NOT EXCEED .004 DIFFERENCE IN PIN DIA WHEN CHANGING TO A SMALLER DIA PIN.
5. HOLE SIZE FOR HAND INSERTION .105±.002.

| | | | | | |
|----------|-----------|------------------|-------------------|------------------|-----------|
| .275 MAX | .308±.008 | .042.649 | GOLD ³ | TIN ² | 5645980-2 |
| | | | TIN ² | TIN ² | 5645980-1 |
| DIM. B | DIM. A | DIA ⁴ | SPRING | EYELET | PART NO |
| PIN | | | FINISH | | |

| | | | | | |
|--|--|------------------|------------|----------------------------------|---|
| THIS DRAWING IS A CONTROLLED DOCUMENT. | | DWN | 19APR2005 | | Tyco Electronics Corporation Harrisburg, PA 17105-3608 |
| | | CHK | 19APR2005 | | |
| | | APVD | 19APR2005 | | |
| | | NAME | J. HAVENER | | |
| DIMENSIONS: | TOLERANCES UNLESS OTHERWISE SPECIFIED: | PRODUCT SPEC | | MINIATURE SPRING SOCKET ASSEMBLY | |
| INCHES | | 108-14008 | | | |
| | | APPLICATION SPEC | | | |
| | | 114-13152 | | | |
| MATERIAL | FINISH | WEIGHT | SIZE | CAGE CODE | DRAWING NO |
| NOTE 1 | SEE TABLE | - | A3 | 00779 | C=5645980 |
| CUSTOMER DRAWING | | | SCALE | SHEET | REV |
| | | | NTS | 1 OF 1 | A |

SECTION A-A