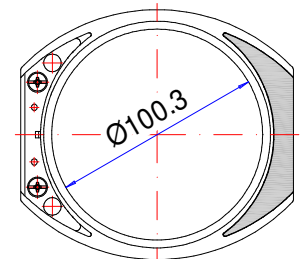
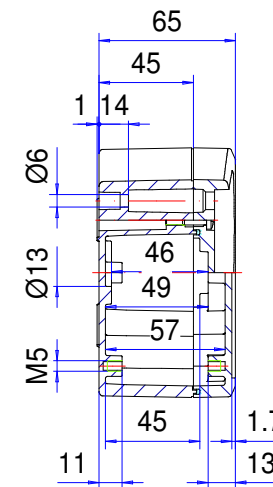
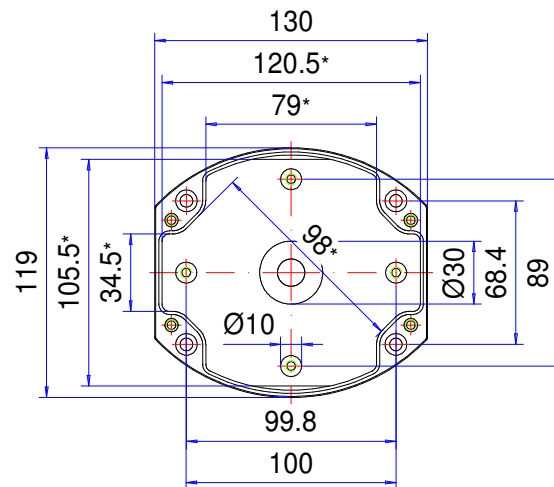
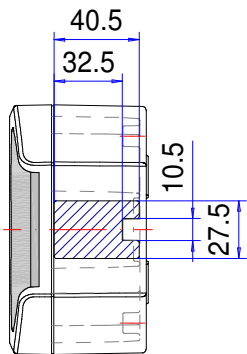
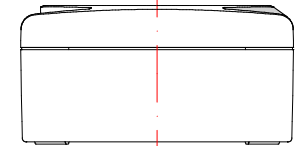
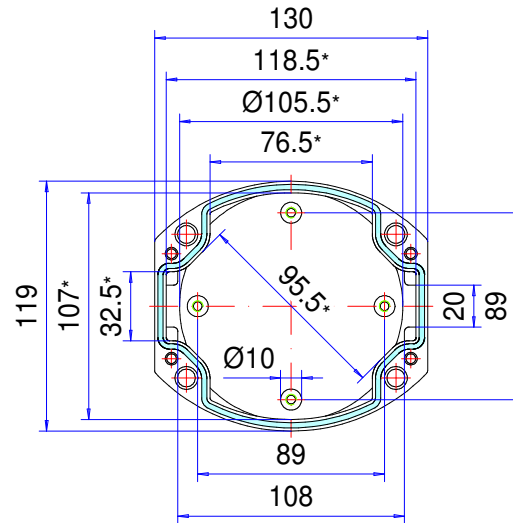


# Enclosure series aluDISC

Type: AR 100

Material-No.: 280.100.000



Folie/ Keypad  
Ø99.7<sup>+0</sup><sub>-0.2</sub>

\* Please note: Mould slope for casting ejection, dimensions in the amount of the bottom!

|                    |  |  |                    |   |
|--------------------|--|--|--------------------|---|
| Enclosure material | GD-Al Si 12 (DIN 1725)                               |  | Ingress protection | IP67 EN 60529                                   |
| Lid screws         | 4x stainless steel 1.4567 (V2A), captive             |  | Weight             | 610 g   |
| Assembly screws    | 5x M5x8, galvanized steel                            |  | Coating            | Powder coating RAL 7035, light grey             |
| Design covers      | 2x Polyoxymethylene (POM), RAL 7016, anthracite grey |  | Tolerance          | GTA 13/5 DIN 1688-4 (outside dimensions ±0,5mm) |
| Gasket             | 1x moulded gasket, silicone, transparent             |  |                    |   |
|                    |  |  |                    |   |