

## ADA2200 EVALUATION BOARD WIKI

There are two evaluation boards available for the ADA2200:

### ADA2200-EVALZ

The ADA2200-EVALZ is the simpler of the two evaluation boards. It facilitates signal connections to standard test equipment. The part can be reconfigured with the use of the on-board EEPROM.



Figure 1. ADA2200-EVALZ Evaluation Board

User guide, documentation and purchasing information can be found under

<http://www.analog.com/en/evaluation/eval-ada2200/eb.html>

### ADA2200SDP-EVALZ

The ADA2200SDP-EVALZ adds additional input and output signal conditioning circuitry on-board. It also adds an interface to the SDP board. This allows access to the ADA2200 configuration registers over the SPI port with the use of a PC resident GUI application.

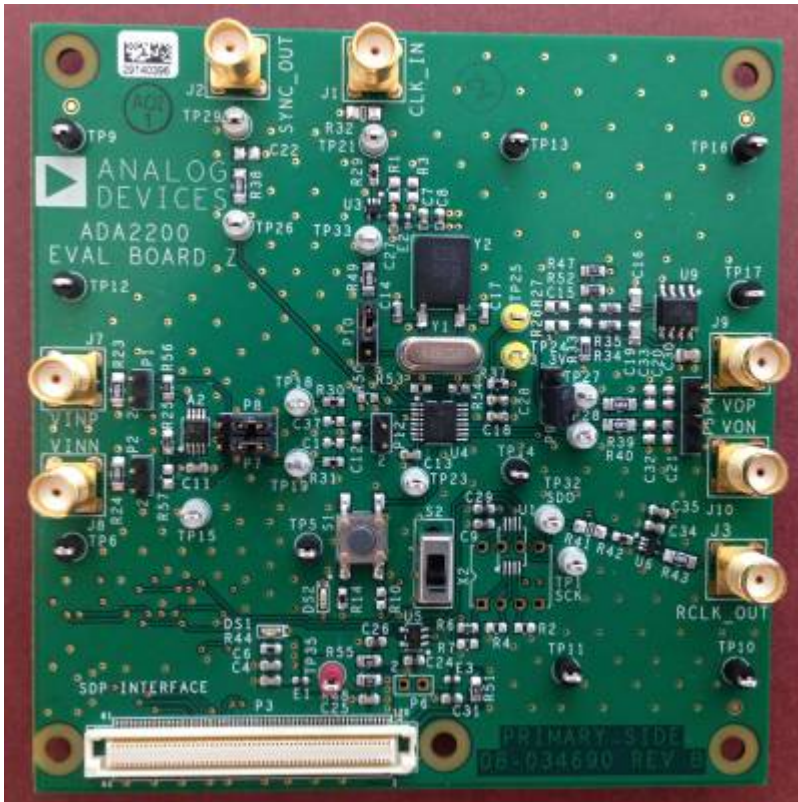


Figure 2. ADA2200SDP-EVALZ Evaluation Board

© Analog Devices, Inc. All rights reserved. Trademarks and registered trademarks are the property of their respective owners.



[www.analog.com](http://www.analog.com)