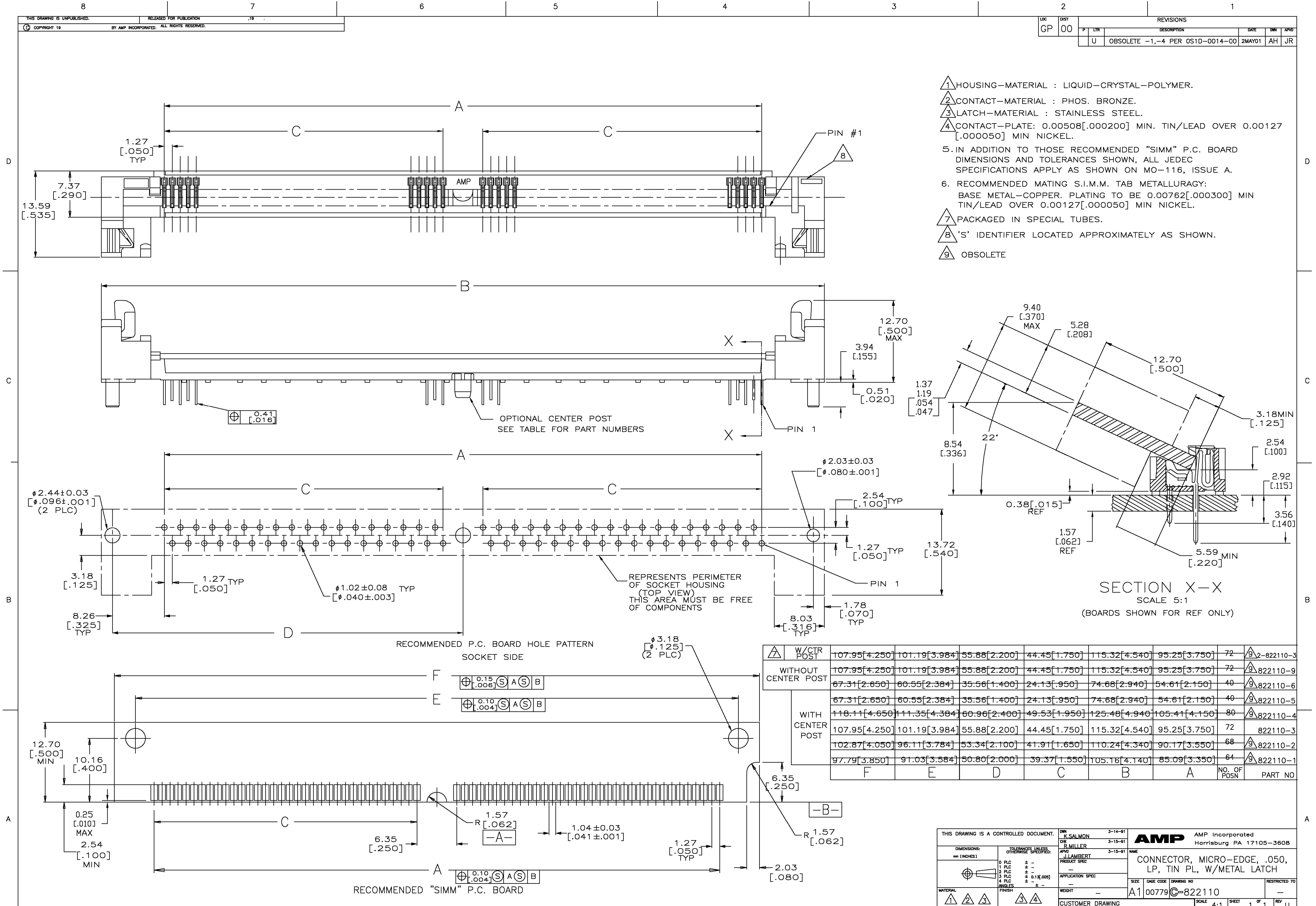


LOC	DIST	REV	DESCRIPTION	DATE	BY	APPD
GP	00					
U			OBSOLETE -1,-4 PER 051D-0014-00	2MAY01	AH	JR



- ① HOUSING-MATERIAL : LIQUID-CRYSTAL-POLYMER.
- ② CONTACT-MATERIAL : PHOS. BRONZE.
- ③ LATCH-MATERIAL : STAINLESS STEEL.
- ④ CONTACT-PLATE: 0.00508[.000200] MIN. TIN/LEAD OVER 0.00127 [.000050] MIN NICKEL.
- ⑤ IN ADDITION TO THOSE RECOMMENDED "SIMM" P.C. BOARD DIMENSIONS AND TOLERANCES SHOWN, ALL JEDEC SPECIFICATIONS APPLY AS SHOWN ON MO-116, ISSUE A.
- ⑥ RECOMMENDED MATING S.I.M.M. TAB METALLURGY: BASE METAL-COPPER. PLATING TO BE 0.00762[.000300] MIN TIN/LEAD OVER 0.00127[.000050] MIN NICKEL.
- ⑦ PACKAGED IN SPECIAL TUBES.
- ⑧ 'S' IDENTIFIER LOCATED APPROXIMATELY AS SHOWN.
- ⑨ OBSOLETE

W/CTR POST	F	E	D	C	B	A	NO. OF POSN	PART NO
WITHOUT CENTER POST	107.95[4.250]	101.19[3.984]	55.88[2.200]	44.45[1.750]	115.32[4.540]	95.25[3.750]	72	⑨ 822110-3
	67.31[2.650]	60.55[2.384]	35.56[1.400]	24.13[.950]	74.68[2.940]	54.61[2.150]	40	⑨ 822110-6
WITH CENTER POST	118.11[4.650]	111.35[4.384]	60.96[2.400]	49.53[1.950]	125.48[4.940]	105.41[4.150]	80	⑨ 822110-4
	107.95[4.250]	101.19[3.984]	55.88[2.200]	44.45[1.750]	115.32[4.540]	95.25[3.750]	72	822110-3
	102.87[4.050]	96.11[3.784]	53.34[2.100]	41.91[1.650]	110.24[4.340]	90.17[3.550]	68	⑨ 822110-2
	97.79[3.850]	91.03[3.584]	50.80[2.000]	39.37[1.550]	105.16[4.140]	85.09[3.350]	64	⑨ 822110-1

THIS DRAWING IS A CONTROLLED DOCUMENT.

DIMENSIONS: mm [INCHES]

TOLERANCES UNLESS OTHERWISE SPECIFIED:

0 PLC	±	-
1 PLC	±	-
2 PLC	±	-
3 PLC	±	0.1x[.005]
4 PLC	±	-
ANGLES	±	-

MATERIAL: ① ② ③ ④ ⑤ ⑥ ⑦ ⑧ ⑨

FINISH: ① ② ③ ④ ⑤ ⑥ ⑦ ⑧ ⑨

APPROVED: J. LAMBERT, 3-15-91

AMP Incorporated, Harrisburg PA 17105-3608

CONNECTOR, MICRO-EDGE, .050, LP, TIN PL, W/METAL LATCH

SIZE: A1, GAGE CODE: 00779, DRAWING NO: C-822110

CUSTOMER DRAWING, SCALE: 4:1, SHEET: 1 OF 1, REV: U