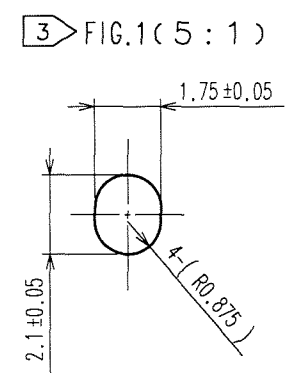
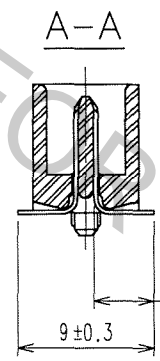
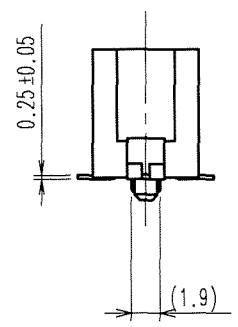
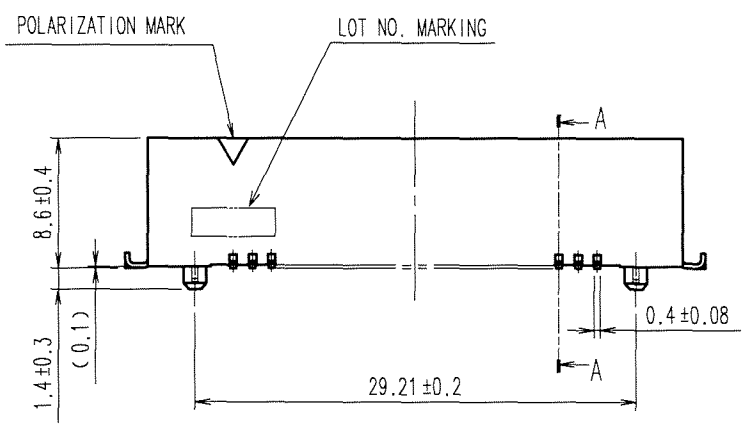
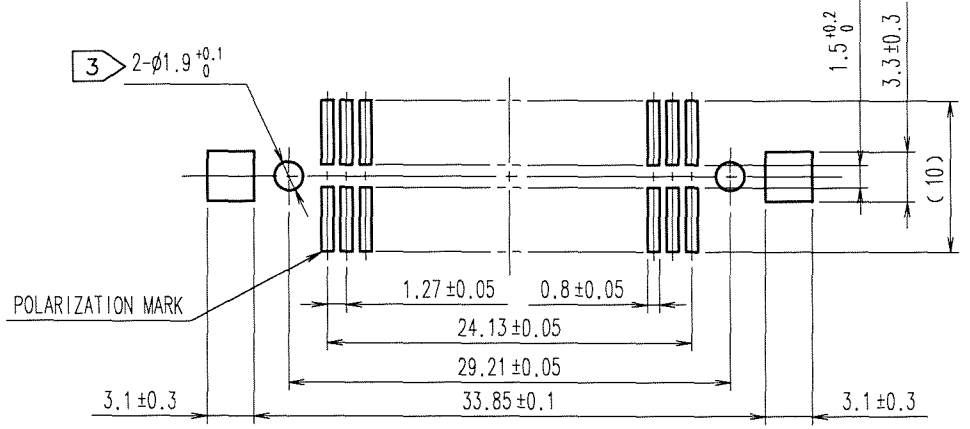
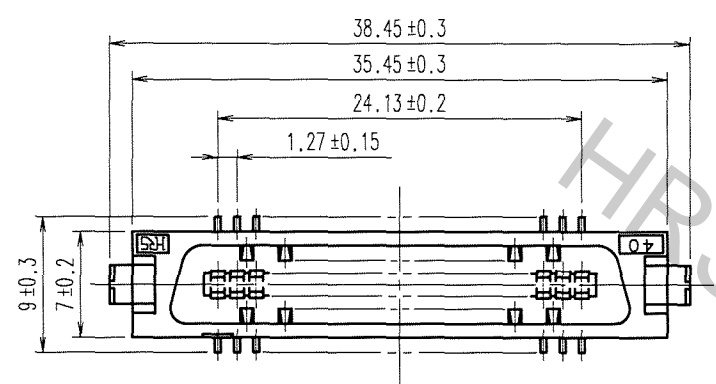


Apr.1.2017 Copyright 2017 HIROSE ELECTRIC CO., LTD. All Rights Reserved.

COUNT	DESCRIPTION OF REVISIONS	BY	CHKD	DATE	COUNT	DESCRIPTION OF REVISIONS	BY	CHKD	DATE
△				..	△				..
△				..	△				..
△				..	△				..

RECOMMENDED LAND PATTERN DIMENSION OF PCB (MOUNTING SIDE)



- NOTES
- 1 LEAD CO-PLANARITY SHALL BE 0.15 MAX.
 - 2 THE DIMENSIONS IN PARENTHESES ARE FOR REFERENCE.
 - 3 IN CASE OF THE AUTOMATED MOUNTING, RECOMMENDED HOLE DIAMETER OF BOSS IS SHOWN IN FIG.1.

TO
PCK

3	BRASS	TIN-PLATING	2	PHOSPHOR BRONZE	CONTACT AREA:GOLD 0.2μm min.
1	PPS	LIGHT BROWN (UL94V-0)			LEAD AREA:TIN-PLATING 2μm min.
NO.	MATERIAL	FINISH, REMARKS	NO.	MATERIAL	FINISH, REMARKS
					UNDER PLATING:NICKEL 2μm min.
CODE NO. (OLD) CL		DRAWN A.SUZUKAWA 06.03.07	DESIGNED <i>A. Nakamura</i> 06.03.07	CHECKED <i>K. Ozawa</i> 06.03.07	APPROVED <i>H. Okawa</i> 06.03.07
SCALE 2 : 1		DRAWING NO. EDC3-082401-21		PART NO. FX2-40P-1.27SVL(71)	
UNITS mm		HRS HIROSE ELECTRIC CO., LTD		CODE NO. CL572-2053-2-71	
					1/1