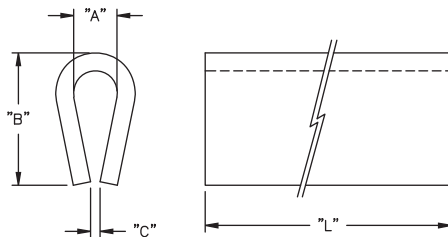
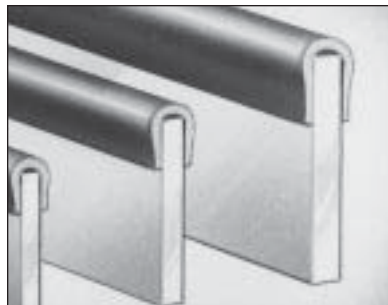


# GROMMETS & BUSHINGS/LED SPACERS & INSULATORS

## DSC Duro Strip Channel



### Features

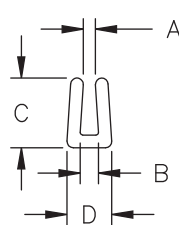
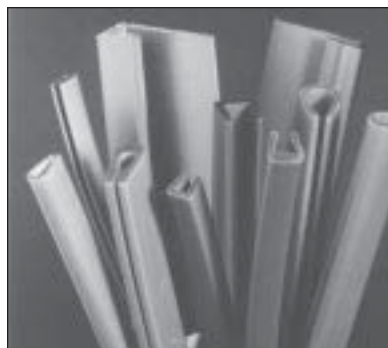
- Used as wear strips, non-abrasive edging, noise-reducing conveyor strips, framing, binding, or to protect from sharp edges
- Built in lubricant for reduced friction and longer part life.
- Resistant to ordinary solvents, mild acids and alkalis or fungus growth

Material: MDS Filled Nylon, RMS-21 • Color: Grey					
Part No	A ± .015 (0.4)	B ± .015 (0.4)	C Ref.	Wall Thickness	Std. Pkg.
DSC-.5-48	.062 (1.6)	.300 (7.6)	.031 (0.8)	.031 (0.8)	4' Lengths, 25 per bundle
DSC-.5-1200					100' Coil
DSC-1-48	.125 (3.2)	.375 (9.5)	.020 (0.5)	.047 (1.2)	4' Lengths, 25 per bundle
DSC-1-1200					100' Coil
DSC-2-48	.188 (4.8)	.500 (12.7)	.031 (0.8)		4' Lengths, 25 per bundle
DSC-2-1200					100' Coil
DSC-3-48	.250 (6.4)	.625 (15.9)	.045 (1.1)	.063 (1.6)	4' Lengths, 25 per bundle
DSC-3-1200					100' Coil

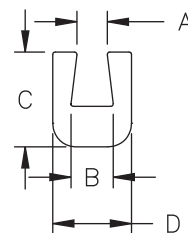
Custom lengths available by special order

## RWRS

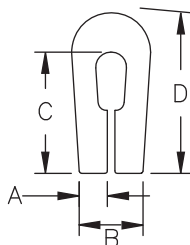
### Richco Wear Resistant Strips



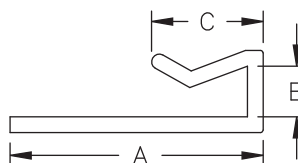
RWRS-1



RWRS-2



RWRS-3



RWRS-4

### Features

- Used as wear strips, non-abrasive edging, noise-reducing conveyor strips, framing, binding, or to protect from sharp edges
- Built in lubricant for reduced friction and longer part life.
- Resistant to ordinary solvents, mild acids and alkalis or fungus growth

Material: MDS Filled Nylon, RMS-21 • Color: Gray							
Part No.	A	B	C Max.	D	Wall Thickness	Panel Thickness	Std. Pkg.
RWRS-1-A-1200	.048 (1.2)	.072 (1.8)	.275 (7.0)	.177 (4.5)	.050 (1.3)	1/16	100' Coil (30.5)
RWRS-1-B-1200	.105 (2.7)	.135 (3.4)	.312 (7.9)	.266 (6.8)	.062 (1.6)	1/8	
RWRS-1-C-1200	.230 (5.8)	.260 (6.6)	.370 (9.4)	.416 (10.6)	.075 (1.9)	1/4	
RWRS-2-A-1200	.120 (3.0)	.180 (4.6)	.375 (9.5)	.312 (7.9)		.120 - .167	
RWRS-3-A-1200	.110 (2.8)	.250 (6.4)	.479 (12.2)	.635 (16.1)		1/16 - 3/32	12' Length (3.7)
RWRS-4-A-144	1.00 (25.4)	.200 (5.1)	.440 (11.2)		.062 (1.6)	1/8 - 3/16	
RWRS-4-B144		.330 (8.4)				1/4 - 5/16	

Custom lengths available by special order