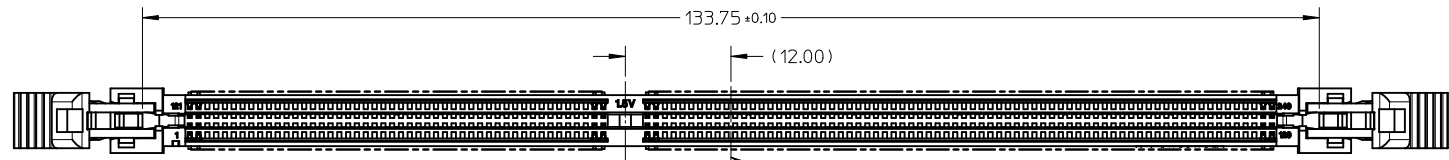


NOTES:

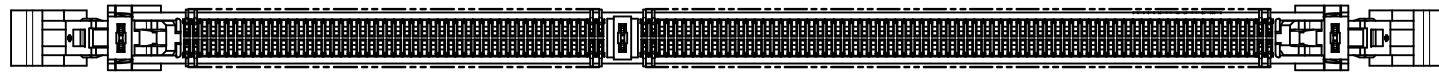
- MATERIAL : HOUSING - LCP, GLASS FILLED, UL 94V-0  
COLOUR : BLACK.  
LATCH - NYLON, GLASS FILLED, UL 94V-0  
COLOUR : SEE TABLE ON SHEET 6.  
TERMINAL : COPPER ALLOY.
- FINISHES - SEE TABLE ON SHEET 6.
- PRODUCT SPECIFICATION : SEE TABLE ON SHEET 6.
- PACKAGING SPECIFICATION: PRODUCT SHALL BE PACKED IN TRAY,  
SEE SHEET 6.
- CARD SLOT ACCEPTS 1.27±0.10MM MODULE THICKNESS  
(MEASURED FROM P.C. PADS).
- MOLEX LOGO, DATE & PART NO. INDICATED ON HOUSING.
- MODULE SEATING PLANE FROM TOP OF PCB.
- KEEP OUT ZONE RESERVED FOR LATCH.
- KEEP OUT AREA IS THE AREA WHERE THE CONNECTOR  
(INCLUDED LATCHES IN OPENING POSITION) IS MOUNTED ON THE PCB.
- KEEP OUT ZONE AS PER JEDEC SO-007.

|  |           |             |  |                                       |  |                            |                           |                              |   |                        |
|--|-----------|-------------|--|---------------------------------------|--|----------------------------|---------------------------|------------------------------|---|------------------------|
| P&P CAP UPDATED<br>EC NO: S2011-0823<br>DRWN: JAKEEWEW 2011/03/17<br>CHKD: CCTEH 2011/04/07<br>APPR: SILENI 2011/04/07 | REV<br>B3 | DESCRIPTION | QUALITY SYMBOLS<br>F <sub>A</sub> =0<br>F <sub>B</sub> =0<br>F <sub>C</sub> =0 | GENERAL TOLERANCES (UNLESS SPECIFIED) |  | DIMENSION STYLE<br>MM ONLY |                           | SCALE<br>NTS                 | DESIGN UNITS<br>METRIC  | THIRD ANGLE PROJECTION |
|  |           |             |  |                                       | mm   | INCH                       | DRAWN BY<br>CGTAN         | DATE<br>2008/02/11           | TITLE<br>DDR3 DIMM, 100MM PITCH<br>240 CKTS, VERTICAL SMT<br>LOW-LLCR, STD HEIGHT |                        |
|  |           |             |  | 4 PLACES                              | ± ---  | ± ---                      | CHECKED BY<br>YTYANG01    | DATE<br>2008/05/23           | MOLEX INCORPORATED  |                        |
|  |           |             |  | 3 PLACES                              | ± ---  | ± ---                      | APPROVED BY<br>SHLENI     | DATE<br>2008/05/23           |   |                        |
|  |           |             | 1 PLACE  | ± ---                                 | ± ---  | ANGULAR ± 1 °              | MATERIAL NO.<br>SEE TABLE | DOCUMENT NO.<br>SD-78378-001 | SHEET NO.<br>1 OF 6   |                        |
| DRAFT WHERE APPLICABLE<br>MUST REMAIN<br>WITHIN DIMENSIONS   |           |             |  | SIZE<br>A3                            | THIS DRAWING CONTAINS INFORMATION THAT IS PROPRIETARY TO MOLEX<br>INCORPORATED AND SHOULD NOT BE USED WITHOUT WRITTEN PERMISSION |                            |                           |                              |   |                        |

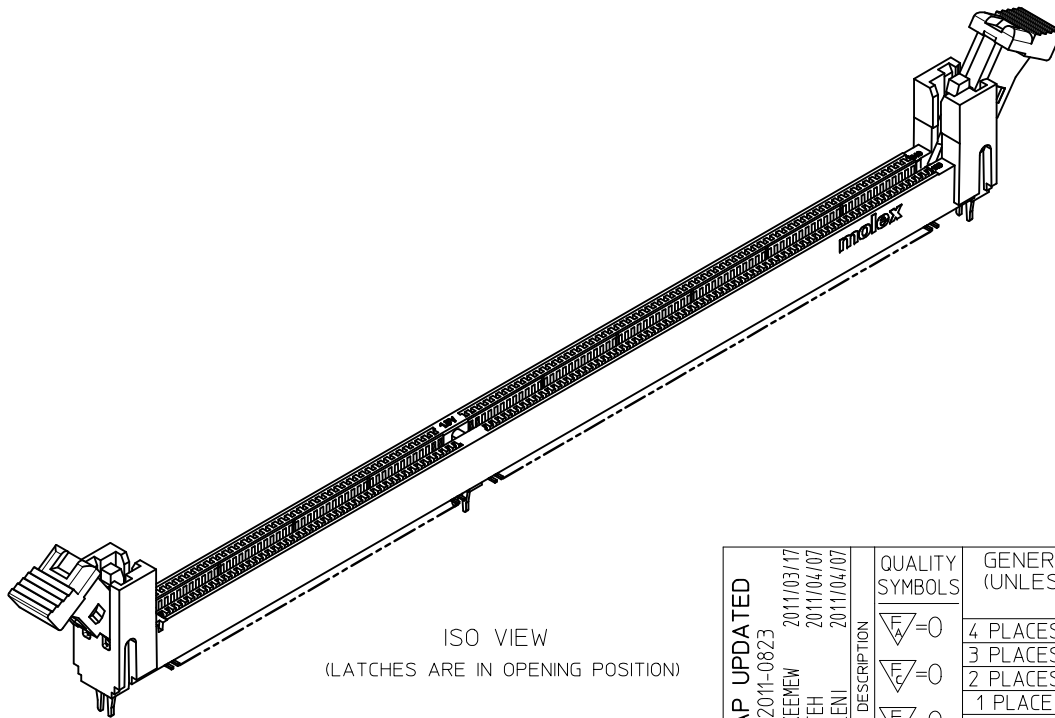
10 9 8 7 6 5 4 3 2 1



TOP VIEW  
(LATCHES ARE IN OPENING POSITION)



BOTTOM VIEW  
(LATCHES ARE IN OPENING POSITION)

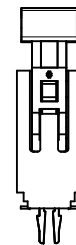
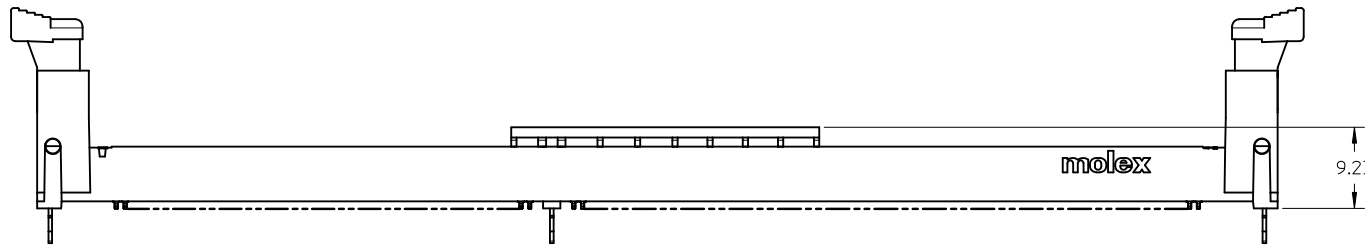
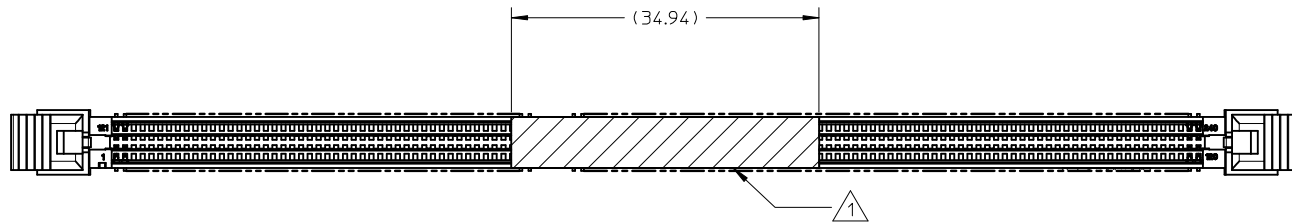


ISO VIEW  
(LATCHES ARE IN OPENING POSITION)

|   |                          |  |                                       |  |   |                        |  |                           |                              |                     |  |
|---|--------------------------|--|---------------------------------------|--|---|------------------------|--|---------------------------|------------------------------|---------------------|--|
| <b>P&amp;P CAP UPDATED</b><br>EC NO: S2011-0823<br>DRWN: JAKEEVEW 2011/03/17<br>CHKD: CCTEH 2011/04/07<br>APPR: SHLENI 2011/04/07 | DESCRIPTION<br>REV<br>B3 | QUALITY SYMBOLS<br>$F_A=0$<br>$F_C=0$<br>$F_P=0$ | GENERAL TOLERANCES (UNLESS SPECIFIED) |  | DIMENSION STYLE<br><b>MM ONLY</b>   |                        | SCALE<br>NTS   | DESIGN UNITS<br>METRIC    | THIRD ANGLE PROJECTION       |                     |  |
|   |                          |  |                                       |  | DRAWN BY<br>CGTAN   | DATE<br>2008/02/11     | TITLE<br>DDR3 DIMM, 100MM PITCH<br>240 CKTS, VERTICAL SMT<br>LOW-LLCR, STD HEIGHT  |                           |                              |                     |  |
|   |                          |  |                                       |  |   | CHECKED BY<br>YTYANG01 | DATE<br>2008/05/23   | MOLEX INCORPORATED        |                              |                     |  |
|   |                          |  |                                       |  |   | APPROVED BY<br>SHLENI  | DATE<br>2008/05/23   | MATERIAL NO.<br>SEE TABLE | DOCUMENT NO.<br>SD-78378-001 | SHEET NO.<br>2 OF 6 |  |
| DRAFT WHERE APPLICABLE<br>MUST REMAIN<br>WITHIN DIMENSIONS  |                          |  | mm      INCH                          |  | 4 PLACES ± --- ± ---<br>3 PLACES ± --- ± ---<br>2 PLACES ± 0.20 ± ---<br>1 PLACE ± --- ± ---<br>ANGULAR ± 1 ° |                        | THIS DRAWING CONTAINS INFORMATION THAT IS PROPRIETARY TO MOLEX<br>INCORPORATED AND SHOULD NOT BE USED WITHOUT WRITTEN PERMISSION |                           |                              |                     |  |

9 8 7 6 5 4 3 2 1

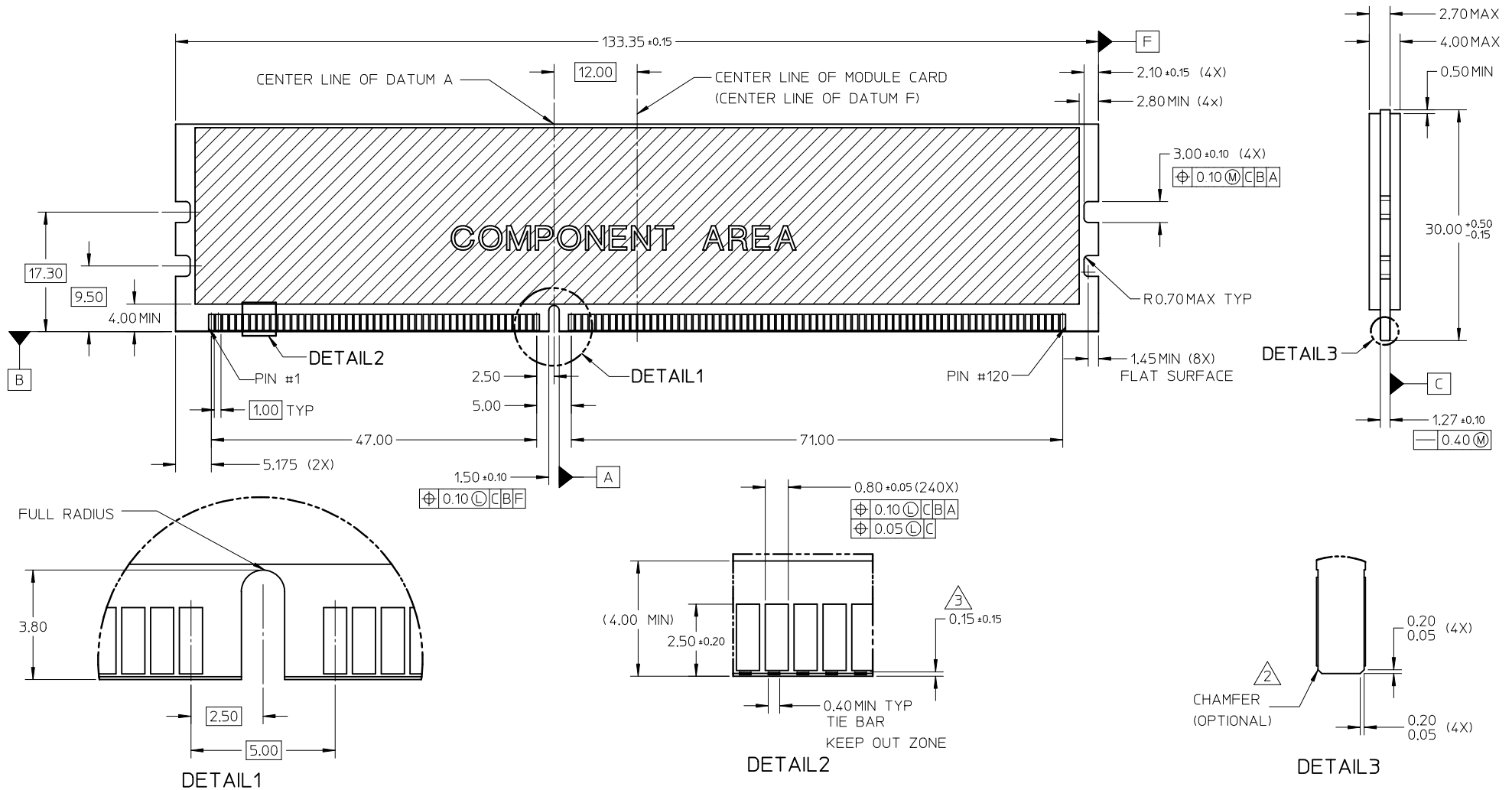
# VIEWS WITH PICK & PLACE CAP



1. AREA FOR PICK AND PLACE

|   |  |  |  |   |  |                        |
|---|--|--|--|---|--|------------------------|
| <b>P&amp;P CAP UPDATED</b><br>EC NO: S2011-0823<br>DRWN: JAKEEWEW 2011/03/17<br>CHKD: CCTEH 2011/04/07<br>APPR: SHLENI 2011/04/07 | QUALITY SYMBOLS                                    | GENERAL TOLERANCES (UNLESS SPECIFIED)  | DIMENSION STYLE  | SCALE   | DESIGN UNITS   | THIRD ANGLE PROJECTION |
|   | $\nabla_F = 0$<br>$\nabla_E = 0$<br>$\nabla_A = 0$ | mm INCH<br>4 PLACES ± --- ± ---<br>3 PLACES ± --- ± ---<br>2 PLACES ± 0.20 ± ---<br>1 PLACE ± --- ± ---<br>ANGULAR ± 1 ° | MM ONLY  | NTS   | METRIC   |                        |
|   | REV  | DRAFT WHERE APPLICABLE MUST REMAIN WITHIN DIMENSIONS   | DRAWN BY DATE<br>CGTAN 2008/02/11<br>CHECKED BY DATE<br>YTYANG01 2008/05/23<br>APPROVED BY DATE<br>SHLENI 2008/05/23<br>MATERIAL NO. | TITLE   | DDR3 DIMM, 100MM PITCH<br>240 CKTS, VERTICAL SMT<br>LOW-LLCR, STD HEIGHT |                        |
|   | B3   | SEE TABLE  | MOLEX INCORPORATED<br>SD-78378-001<br>SHEET NO. 3 OF 6   | THIS DRAWING CONTAINS INFORMATION THAT IS PROPRIETARY TO MOLEX INCORPORATED AND SHOULD NOT BE USED WITHOUT WRITTEN PERMISSION |  |                        |

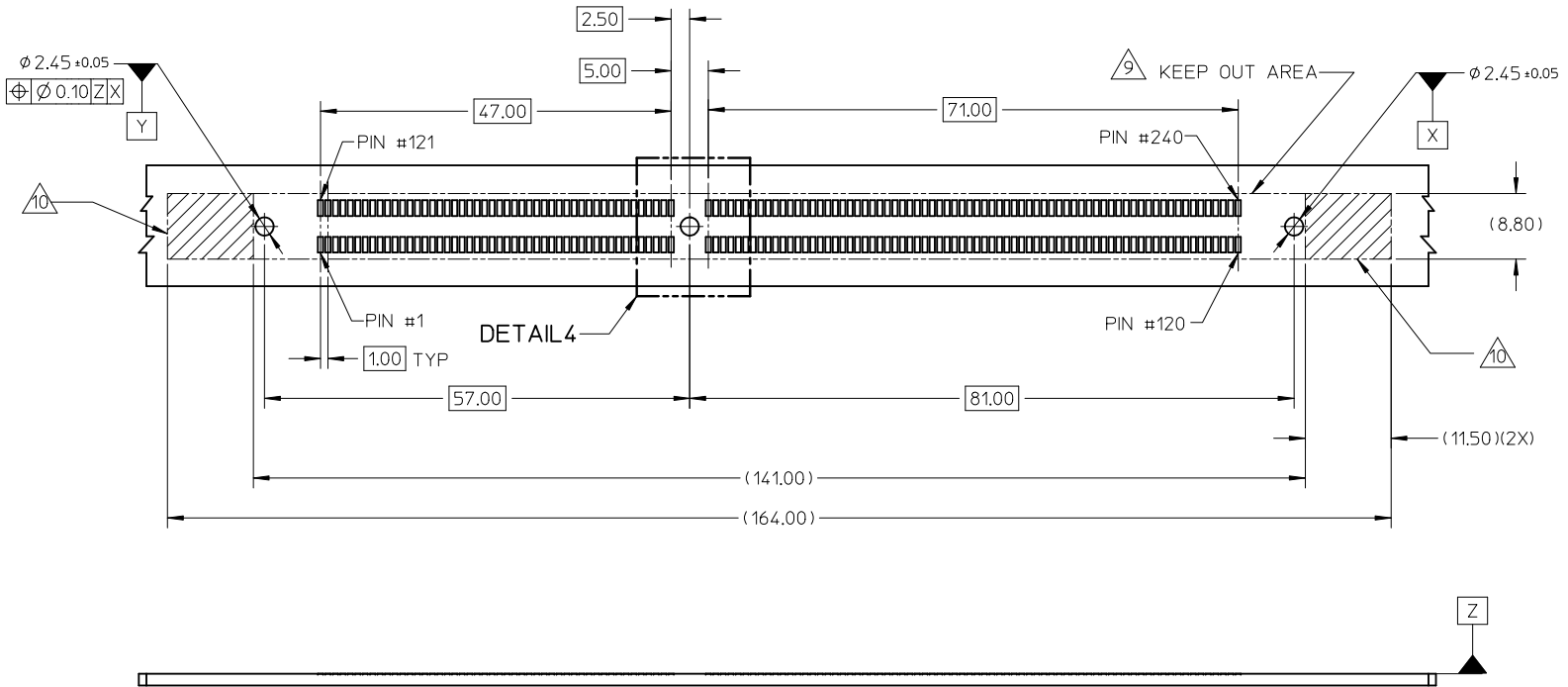
MODULE CARD  
 DDR3 DUAL IN-LINE MEMORY MODULE FAMILY 1.00MM CONTACT CENTERS  
 (JEDEC MO-269, ISSUE B, APRIL/06)



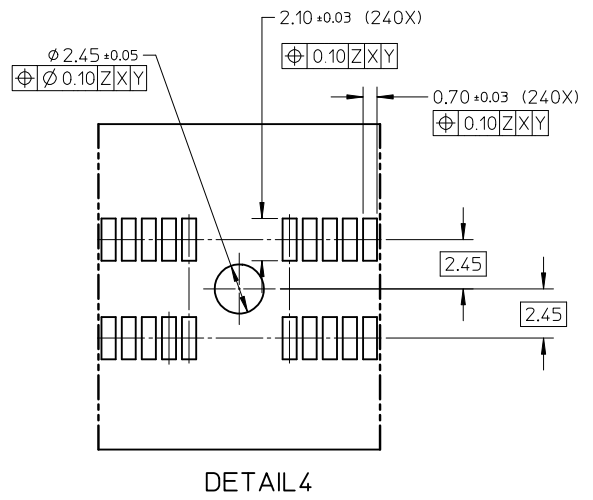
NOTES:  
 1. RECOMMENDED PLATING FOR CONTACT PADS:  
 PREFERRED: 0.76 MICROMETERS GOLD PLATING MIN OVER 2.00 MICROMETERS NICKEL.  
 ALTERNATIVE: 0.05-0.75 MICROMETERS GOLD PLATING OVER 2.00 MICROMETERS NICKEL MUST USE AN ELECTRONIC CONTACT GRADE CORROSIVE BARRIER LUBRICANT.  
 2. CHAMFER IS OPTIONAL AND IS NOT TO HIT THE GOLD PADS.  
 3. LEADING EDGE OF GOLD PADS SPECIFIED BY KEEPOUT ZONE SHALL BE FREE OF BURRS AND EXTERNAL TIE BARS.

|  |   |  |  |                            |       |   |                        |   |  |  |  |
|--|---|--|--|----------------------------|-------|---|------------------------|---|--|--|--|
| P&P CAP UPDATED<br>EC NO: S2011-0823<br>DRWN: JAKEEWEW 2011/03/17<br>CHKD: CCTEH 2011/04/07<br>APPR: SHLENI 2011/04/07 | DESCRIPTION<br>QUALITY SYMBOLS<br>$F_A=0$<br>$F_C=0$<br>$F_B=0$ | GENERAL TOLERANCES (UNLESS SPECIFIED)                |  | DIMENSION STYLE<br>MM ONLY |       | SCALE<br>NTS  | DESIGN UNITS<br>METRIC | THIRD ANGLE PROJECTION  |  |  |  |
|  |   |  |  | mm                         | INCH  | DRAWN BY<br>CGTAN   | DATE<br>2008/02/11     | TITLE<br>DDR3 DIMM, 100MM PITCH<br>240 CKTS, VERTICAL SMT<br>LOW-LLCR, STD HEIGHT |  |  |  |
|  |   |  |  | ± ---                      | ± --- | CHECKED BY<br>YTYANG01  | DATE<br>2008/05/23     | MOLEX INCORPORATED<br>DOCUMENT NO. SD-78378-001<br>SHEET NO. 4 OF 6               |  |  |  |
|  |   |  |  | ± 0.20                     | ± --- | APPROVED BY<br>SHLENI   | DATE<br>2008/05/23     |   |  |  |  |
|  |   | ANGULAR ± 1 °  |  | MATERIAL NO.<br>SEE TABLE  |       | THIS DRAWING CONTAINS INFORMATION THAT IS PROPRIETARY TO MOLEX INCORPORATED AND SHOULD NOT BE USED WITHOUT WRITTEN PERMISSION |                        |   |  |  |  |
|  |   | DRAFT WHERE APPLICABLE MUST REMAIN WITHIN DIMENSIONS |  | SIZE<br>A3                 |       |   |                        |   |  |  |  |

10 9 8 7 6 5 4 3 2 1



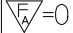
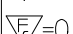

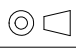

RECOMMENDED PCB THICKNESS 1.57MM ~ 3.18MM  
 RECOMMENDED STENCIL THICKNESS = 150 MICROMETERS



|   |                       |   |   |   |   |                        |  |  |  |
|---|-----------------------|---|---|---|---|------------------------|--|--|--|
| P&P CAP UPDATED<br>EC NO: S2011-0823<br>DRWN: JAKEENW 2011/03/17<br>CHKD: CCTEH 2011/04/07<br>APPR: SHLENI 2011/04/07 | DESCRIPTION<br>REV B3 | QUALITY SYMBOLS   | GENERAL TOLERANCES (UNLESS SPECIFIED)   | DIMENSION STYLE<br>MM ONLY                                  | SCALE<br>NTS  | DESIGN UNITS<br>METRIC | THIRD ANGLE PROJECTION   |  |  |
|   |                       | $F_A = 0$<br>$F_C = 0$<br>$F_P = 0$                     | mm INCH<br>4 PLACES ± --- ± ---<br>3 PLACES ± --- ± ---<br>2 PLACES ± 0.20 ± ---<br>1 PLACE ± --- ± ---<br>ANGULAR ± 1 °      | DRAWN BY CGTAN<br>CHECKED BY YTYANG01<br>APPROVED BY SHLENI | DATE 2008/02/11<br>DATE 2008/05/23<br>DATE 2008/05/23 | TITLE                  | DDR3 DIMM, 100MM PITCH<br>240 CKTS, VERTICAL SMT<br>LOW-LLCR, STD HEIGHT |  |  |
|   |                       | DRAFT WHERE APPLICABLE<br>MUST REMAIN WITHIN DIMENSIONS | SEE TABLE   | MATERIAL NO.  | MOLEX INCORPORATED                                    | DOCUMENT NO.           | SHEET NO.  | MOLEX INCORPORATED<br>SD-78378-001<br>5 OF 6 |  |
|   |                       | SIZE A3   | THIS DRAWING CONTAINS INFORMATION THAT IS PROPRIETARY TO MOLEX INCORPORATED AND SHOULD NOT BE USED WITHOUT WRITTEN PERMISSION |   |   |                        |  |  |  |

9 8 7 6 5 4 3 2 1

| PART NO.   | VOLTAGE KEY POS.    | PLATING OPTION  | PICK & PLACE CAP | LATCH COLOR         | PACKAGING SPECIFICATION | PRODUCT SPECIFICATION |
|------------|---------------------|---|------------------|---------------------|-------------------------|-----------------------|
| 78378-0001 | CENTER (1.5V)       | 0.76µM (30µNCH) MIN. GOLD ON CONTACT.<br>2.54µM (100µNCH) MIN. PURE TIN ON SOLDERTAIL.<br>1.27µM (50µNCH) MIN. NICKEL UNDERPLATE. | NO               | BLACK               | PK-78378-002            | PS-78378-001          |
| 78378-0002 |                     |   |                  | PK-78378-001        |                         |                       |
| 78378-0003 |                     |   |                  | NATURAL (OFF-WHITE) | PK-78378-002            |                       |
| 78378-0004 |                     |   |                  | PK-78378-001        |                         |                       |
| 78378-0051 |                     |   | YES              | BLACK               | PK-78378-002            |                       |
| 78378-0052 |                     |   |                  | PK-78378-001        |                         |                       |
| 78378-0053 |                     |   |                  | NATURAL (OFF-WHITE) | PK-78378-002            |                       |
| 78378-0054 |                     |   |                  | PK-78378-001        |                         |                       |
| 78378-0201 |                     | 0.38µM (15µNCH) MIN. GOLD ON CONTACT.<br>2.54µM (100µNCH) MIN. PURE TIN ON SOLDERTAIL.<br>1.27µM (50µNCH) MIN. NICKEL UNDERPLATE. | NO               | BLACK               | PK-78378-002            | PS-78378-002          |
| 78378-0202 |                     |   |                  | PK-78378-001        |                         |                       |
| 78378-0203 |                     |   |                  | NATURAL (OFF-WHITE) | PK-78378-002            |                       |
| 78378-0204 |                     |   |                  | PK-78378-001        |                         |                       |
| 78378-0251 |                     |   | YES              | BLACK               | PK-78378-002            |                       |
| 78378-0252 |                     |   |                  | PK-78378-001        |                         |                       |
| 78378-0253 | NATURAL (OFF-WHITE) |   |                  | PK-78378-002        |                         |                       |
| 78378-0254 | PK-78378-001        |   |                  |                     |                         |                       |

|  |   |                                       |   |                            |  |              |  |  |  |  |
|--|---|---------------------------------------|---|----------------------------|--|--------------|--|--|--|--|
| P&P CAP UPDATED<br>EC NO: S2011-0823<br>DRWN: JAKEEW 2011/03/17<br>CHKD: CCTEH 2011/04/07<br>APPR: SHLENI 2011/04/07 | QUALITY SYMBOLS<br> = 0<br> = 0<br> = 0 | GENERAL TOLERANCES (UNLESS SPECIFIED) |   | DIMENSION STYLE<br>MM ONLY |  | SCALE<br>NTS | DESIGN UNITS<br>METRIC   |  THIRD ANGLE PROJECTION |  |  |
|  |   |                                       | mm  | INCH                       | DRAWN BY   | DATE         | TITLE  |  |  |  |
|  |   | 4 PLACES                              | ± ---   | ± ---                      | CGTAN  | 2008/02/11   | DDR3 DIMM, 100MM PITCH<br>240 CKTS, VERTICAL SMT<br>LOW-LLCR, STD HEIGHT |  |  |  |
|  |   | 3 PLACES                              | ± ---   | ± ---                      | CHECKED BY   | DATE         |  |  |  |  |
| 2 PLACES   | ± 0.20  | ± ---                                 | YTYANG01  | 2008/05/23                 |  MOLEX INCORPORATED |              |  |  |  |  |
| 1 PLACE  | ± ---   | ± ---                                 | APPROVED BY   | DATE                       |  |              |  |  |  |  |
|  | ANGULAR ± 1 °   |                                       | SHLENI  | 2008/05/23                 | MATERIAL NO.   |              | DOCUMENT NO.   | SHEET NO.  |  |  |
|  | DRAFT WHERE APPLICABLE MUST REMAIN WITHIN DIMENSIONS  |                                       | SEE TABLE   |                            | SD-78378-001   |              | 6 OF 6   |  |  |  |
|  |   |                                       | THIS DRAWING CONTAINS INFORMATION THAT IS PROPRIETARY TO MOLEX INCORPORATED AND SHOULD NOT BE USED WITHOUT WRITTEN PERMISSION |                            |  |              |  |  |  |  |