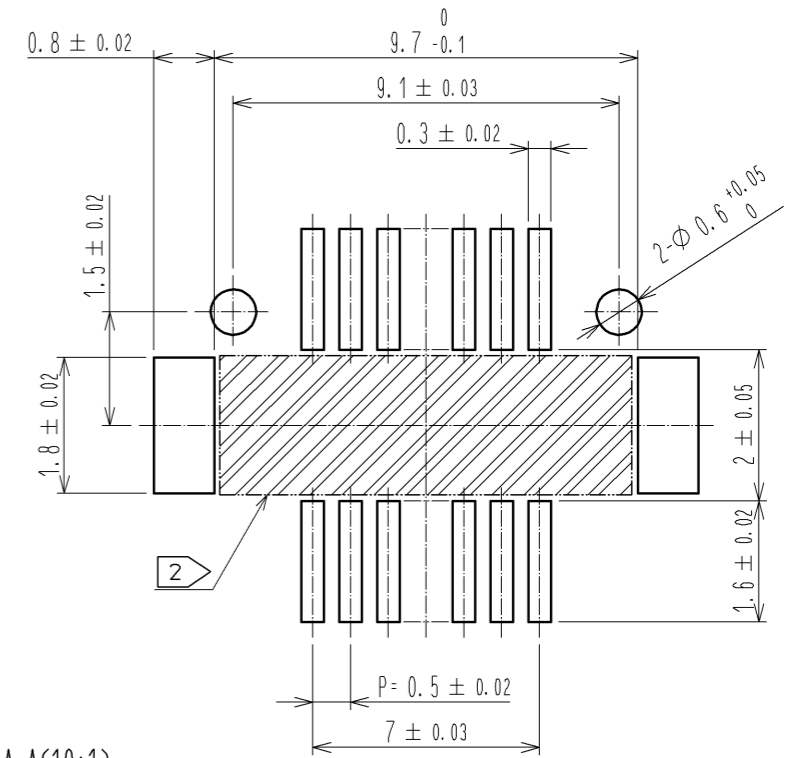
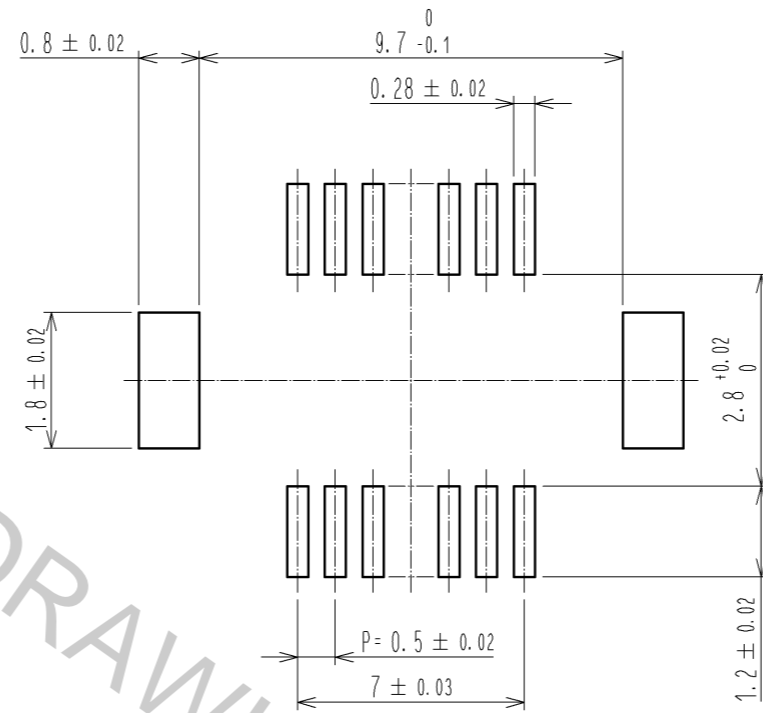
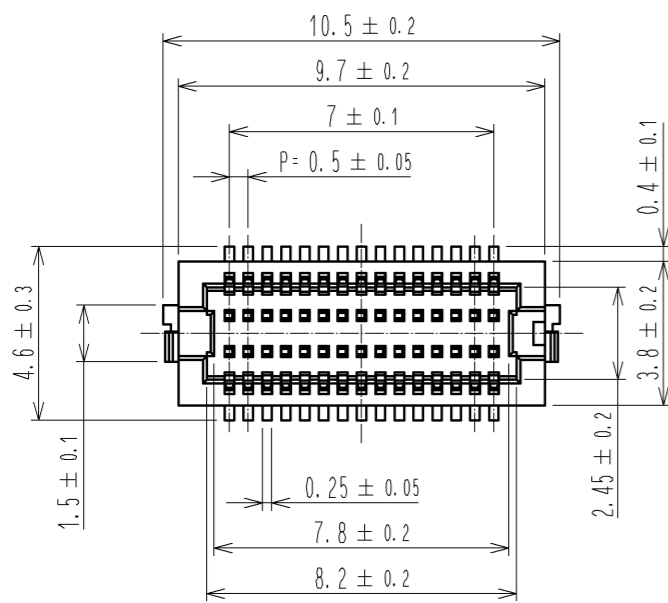
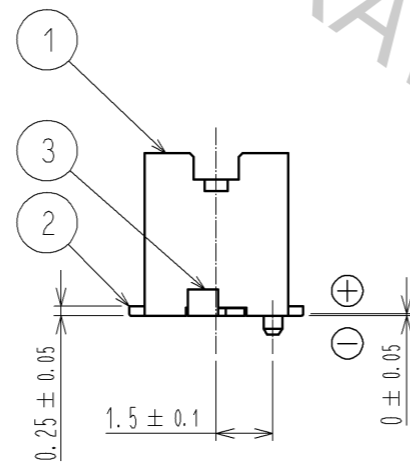
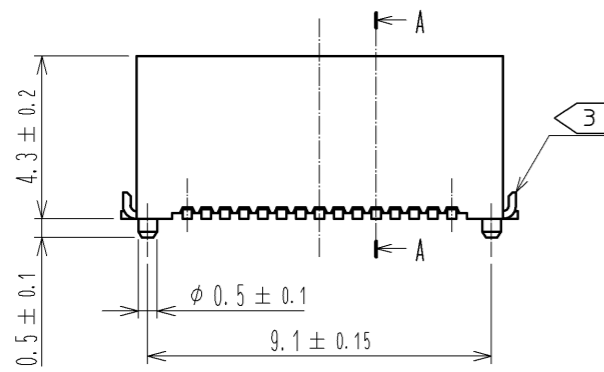


RECOMMEND METAL MASK PATTERN (10:1)

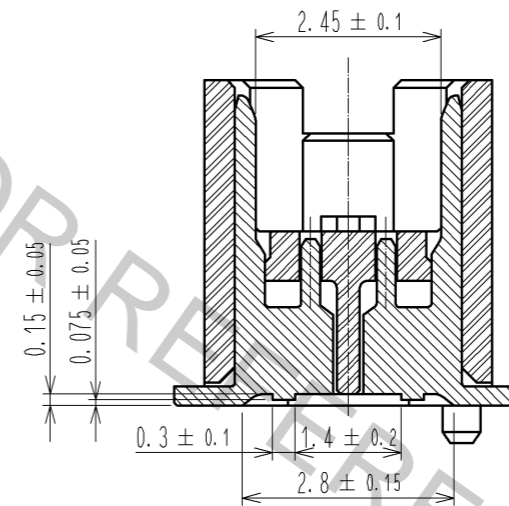
RECOMMENDED PATTERN(10:1)



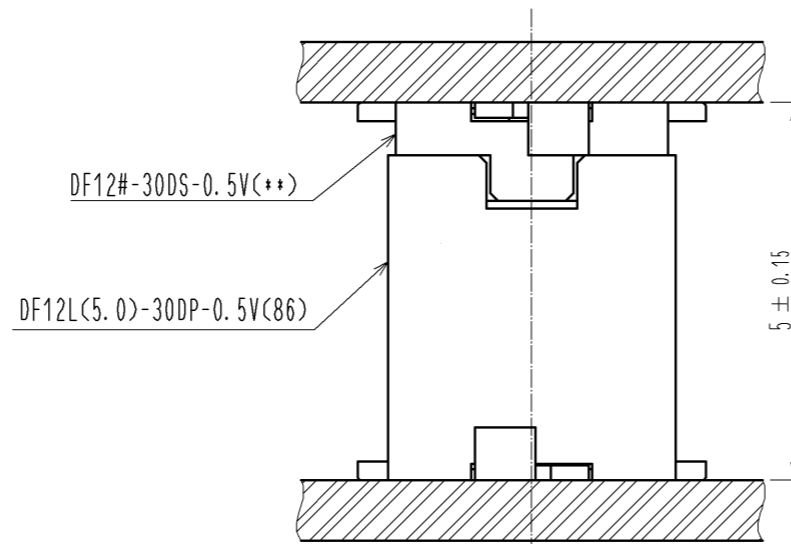
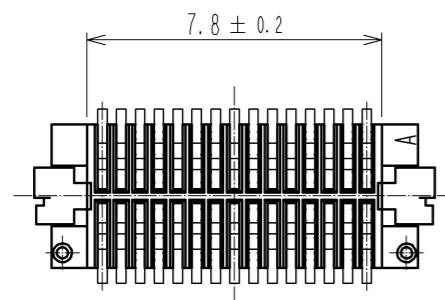
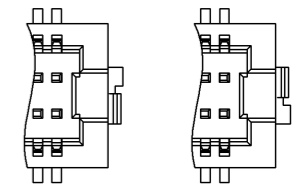
RECOMMENDED THICKNESS OF SOLDER PASTE: 120µm



A-A(10:1)



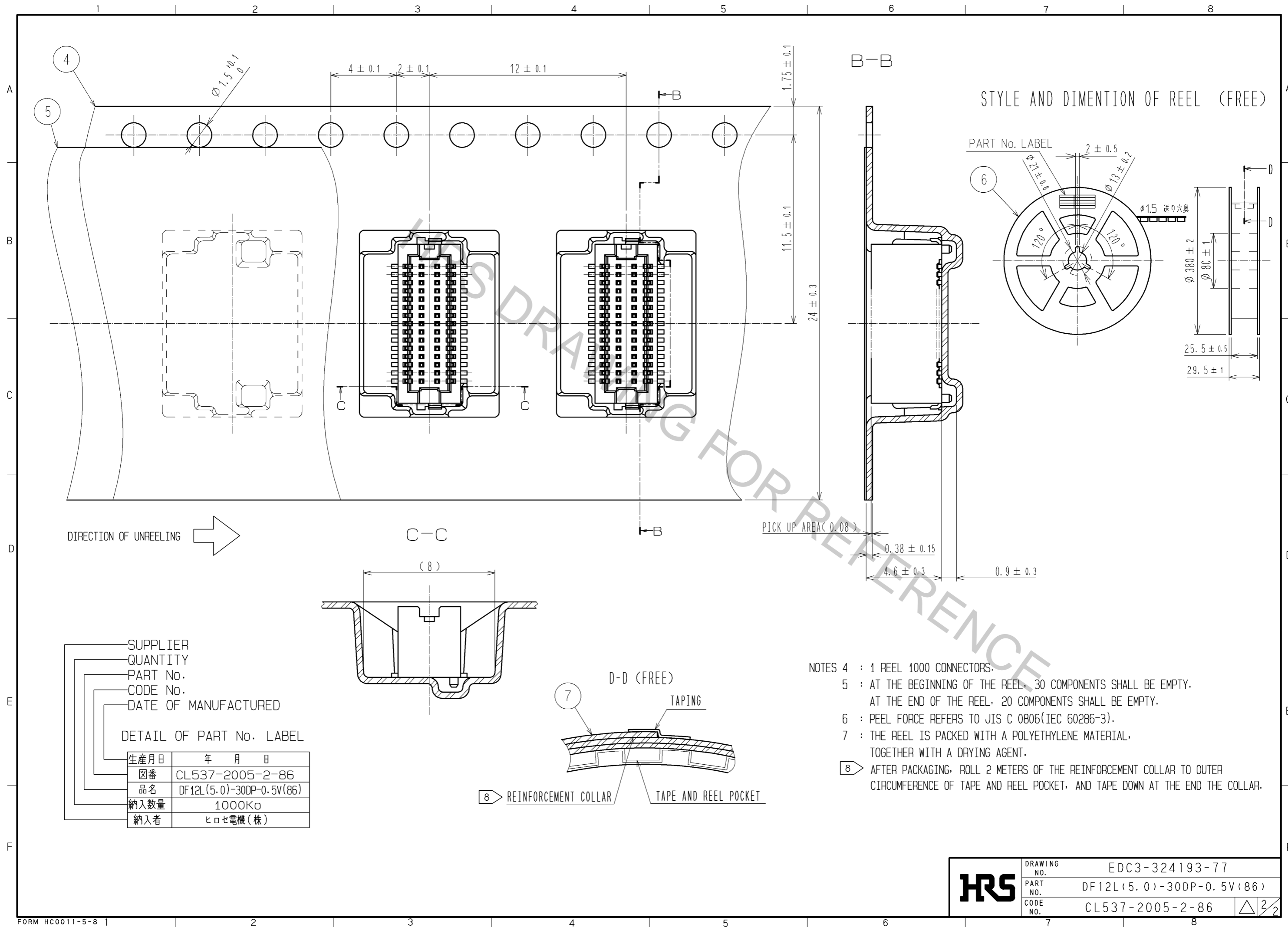
- NOTES 1 : LEAD CO-PLANARITY SHALL BE 0.08 mm MAX.
 2 : IF THERE IS PATTERN ON PART, THERE IS A POSSIBILITY THAT IT WILL MAKE CONTACT WITH THE LEADS.
 3 : REINFORCED METAL FITTINGS AS FOLLOWS.



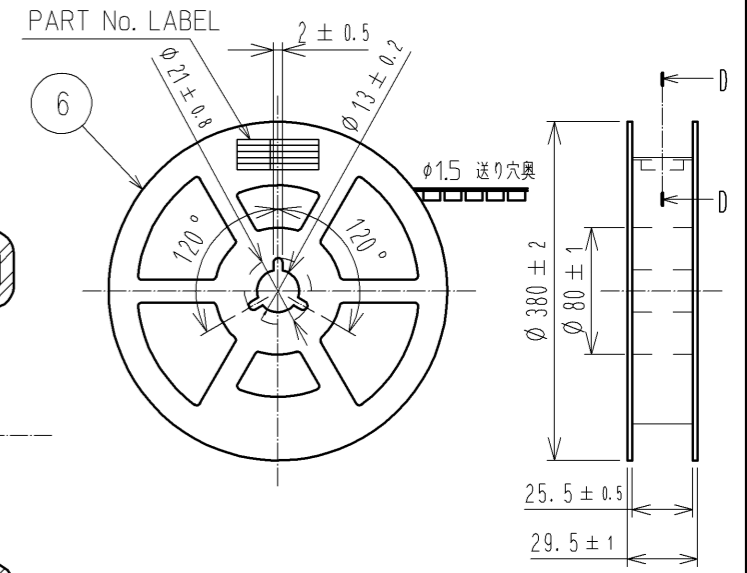
| NO. | MATERIAL | FINISH . REMARKS | NO. | MATERIAL | FINISH . REMARKS |
|-----|-----------------|--|-----|-----------|--|
| 2 | PHOSPHOR BRONZE | CONTACT AREA:GOLD PLATED 0.2µm min LEAD AREA:GOLD PLATED 0.015µm min OTHERS(UNDER PLATING):NICKEL PLATED 2µm min | 7 | PS | CLEAR(REINFORCEMENT COLLAR) |
| 1 | LCP | UL94V-0, BLACK | 6 | PS | BLACK(PLASTIC REEL) |
| | | | 5 | POLYESTER | CLEAR(COVER TAPE) |
| | | | 4 | PS | CLEAR(EMBOSSED CARRIER TAPE) |
| | | | 3 | BRASS | TIN PLATED 2µm min (UNDER PLATING):NICKEL 1µm min |

| UNITS | SCALE | COUNT | DESCRIPTION OF REVISIONS | DESIGNED | CHECKED | DATE |
|-------|-------|-------|----------------------------------|----------|---------|------|
| mm | 5 : 1 | △ | APPROVED : KH. IKEDA 13.12.16 | | | |
| | | | CHECKED : YH. MICHIDA 13.12.16 | | | |
| | | | DESIGNED : YN. SAKAMOTO 13.12.16 | | | |
| | | | DRAWN : YN. SAKAMOTO 13.12.16 | | | |

| DRAWING NO. | PART NO. | CODE NO. |
|----------------|--------------------------|-----------------|
| EDC3-324193-77 | DF12L(5.0)-30DP-0.5V(86) | CL537-2005-2-86 |



STYLE AND DIMENTION OF REEL (FREE)



DIRECTION OF UNREELING →

SUPPLIER
QUANTITY
PART No.
CODE No.
DATE OF MANUFACTURED

DETAIL OF PART No. LABEL

| | |
|------|--------------------------|
| 生産月日 | 年 月 日 |
| 図番 | CL537-2005-2-86 |
| 品名 | DF12L(5.0)-30DP-0.5V(86) |
| 納入数量 | 1000K \square |
| 納入者 | ヒロセ電機(株) |

- NOTES 4 : 1 REEL 1000 CONNECTORS.
 5 : AT THE BEGINNING OF THE REEL, 30 COMPONENTS SHALL BE EMPTY.
 AT THE END OF THE REEL, 20 COMPONENTS SHALL BE EMPTY.
 6 : PEEL FORCE REFERS TO JIS C 0806(IEC 60286-3).
 7 : THE REEL IS PACKED WITH A POLYETHYLENE MATERIAL,
 TOGETHER WITH A DRYING AGENT.
 8 → AFTER PACKAGING, ROLL 2 METERS OF THE REINFORCEMENT COLLAR TO OUTER
 CIRCUMFERENCE OF TAPE AND REEL POCKET, AND TAPE DOWN AT THE END THE COLLAR.

| | | |
|------------|-------------|--------------------------|
| HRS | DRAWING NO. | EDC3-324193-77 |
| | PART NO. | DF12L(5.0)-30DP-0.5V(86) |
| | CODE NO. | CL537-2005-2-86 |
| | | \triangle 2/2 |