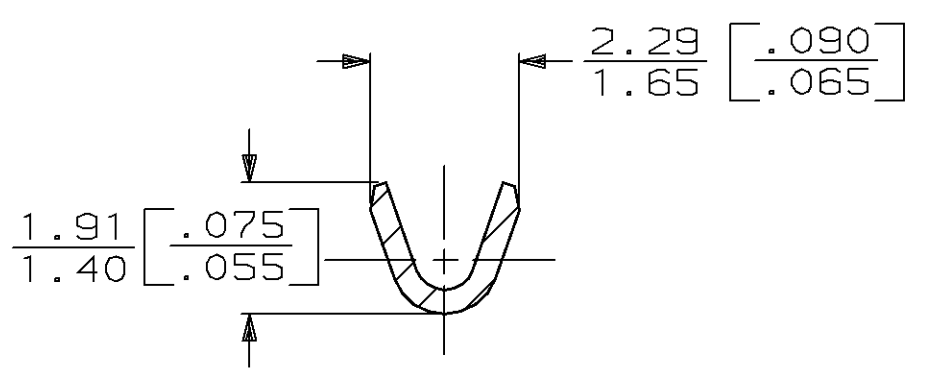
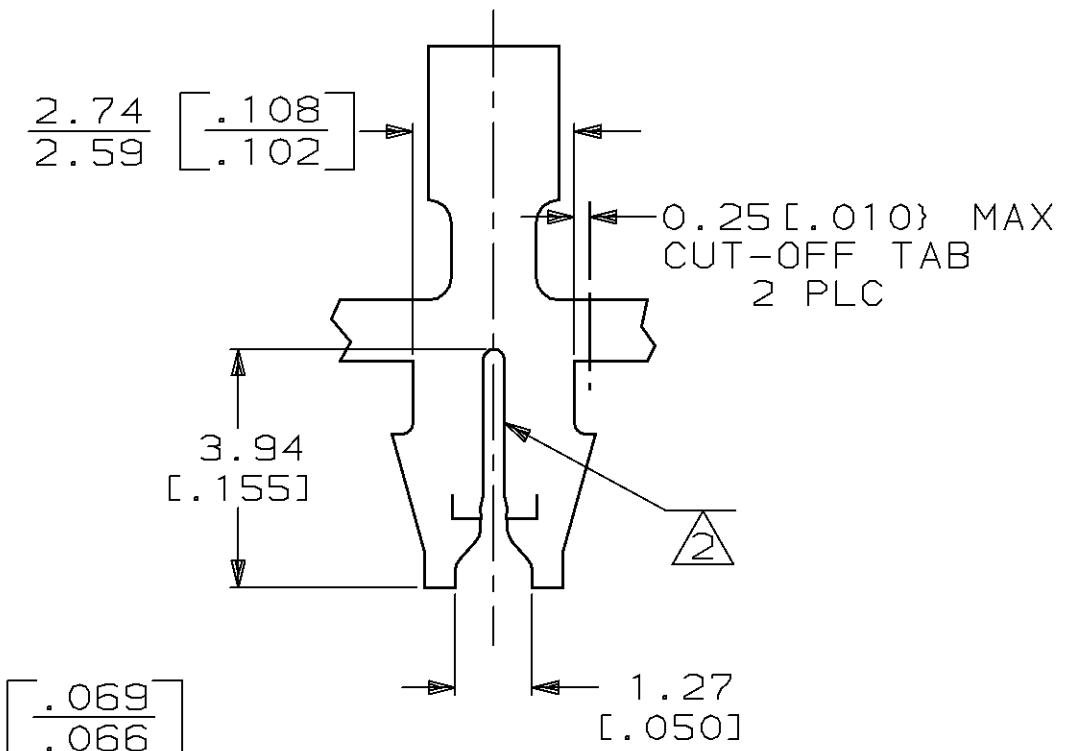
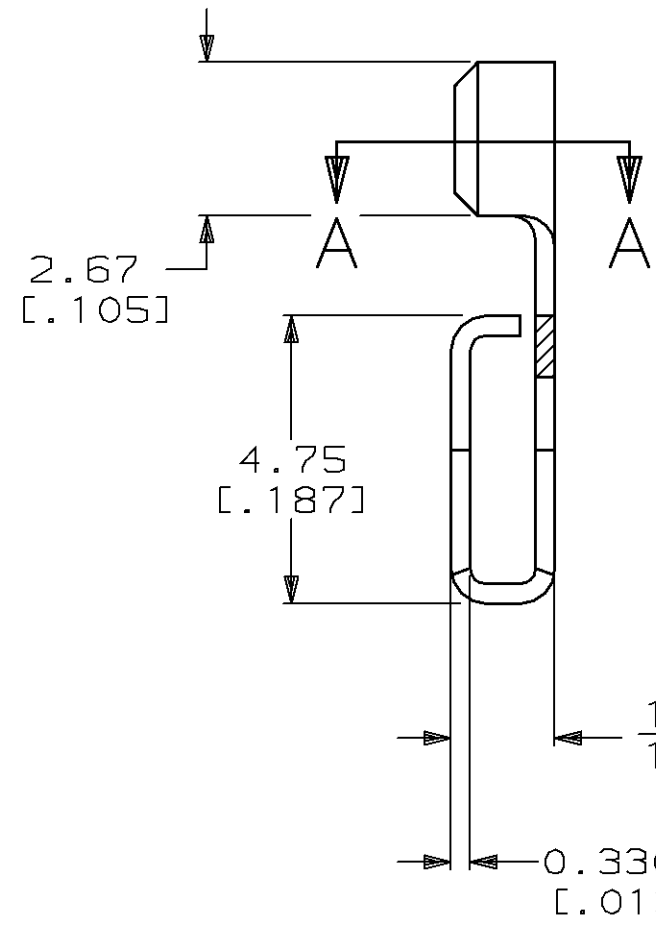
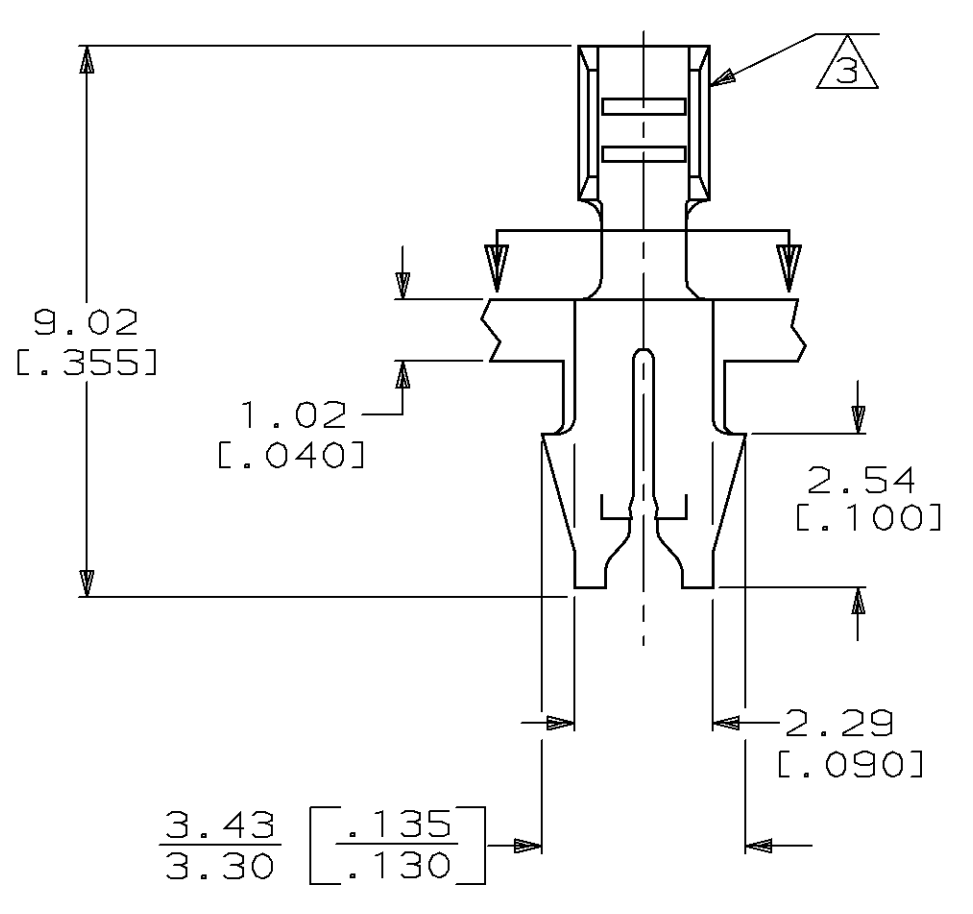
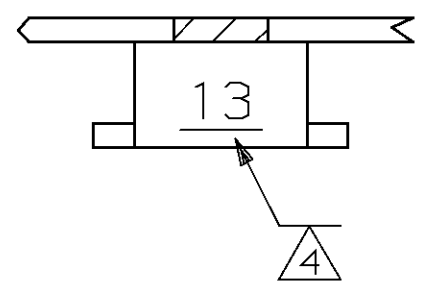


LOC		DIST		REVISIONS				
AF	50	P	F	ZONE	LTR	DESCRIPTION	DATE	APPD
				H		REVISED PER AF-7503	8/16/91	MSF/NN

- 1 CONTINUOUS STRIP ON REELS WITH TERMINALS LOCATED ON 5.08 [.200] CENTERS.
- ② SLOT ACCEPTS A 0.51-0.64 mm DIA [#24-#22] AWG COPPER MAGNET WIRE ONLY (2 WIRES MAX).
- ③ WIRE BARREL ACCEPTS 0.12-0.40 mm² [#26-#22] AWG LEAD WIRE.
- ④ IDENTIFICATION NUMBER FOR MAGNET WIRE RANGE.



SECTION A-A
ROTATED 90° CW

STRIP LENGTH ±.015	TYPE	WIDTH	±0.051 [.002] HEIGHT	WIRE
3.56 [.140]	F	1.40 [.055]	0.97 [.038]	0.35# [22]
			0.89 [.035]	0.20# [24]
			0.86 [.034]	0.14# [26]

WIRE BARREL CRIMP



OBSOLETE	REVERSE REEL OF 62610-1	0.00381 [.000150] MIN THK PER MIL-T-10727	62610-2
	MINI-APPLICATOR		62610-1
	REELING	FINISH	PART NO
DO NOT SCALE PRINT. UNLESS SPECIFIED DIMENSIONS IN mm [INCHES] TOLERANCES ON :	DR 6/13/90 M.S. FEHER	AMP INCORPORATED Harrisburg, Pa. 17105	
2 PLC DEC ± -	CHK 6/14/90 JR RUTH		
3 PLC DEC ± 0.38 [.015]	APPD 6/14/90 D DECKER	NAME	
ANGLES ± -	APPD 6/14/90 TL SHUTTER	TERMINAL, F CRIMP, MAG-MATE™	
MATERIAL	PRODUCT SPEC	SIZE	CAGE CODE
#4 HARD BRASS	-	C	00779
FINISH	APPLICATION SPEC	DRAWING NO	
SEE TABLE	114-2069	62610	
	WEIGHT -	SCALE	SHEET
		8:1	1 OF 1