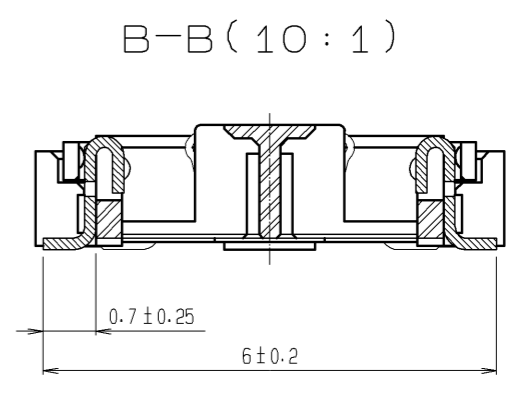
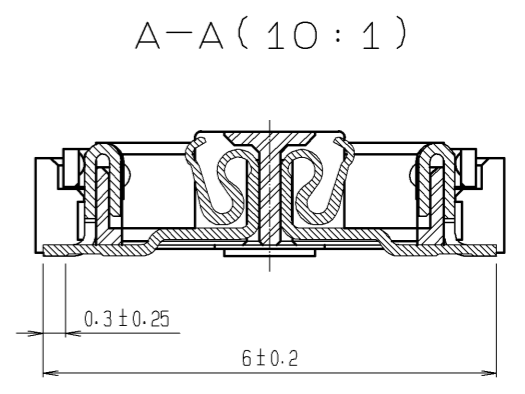
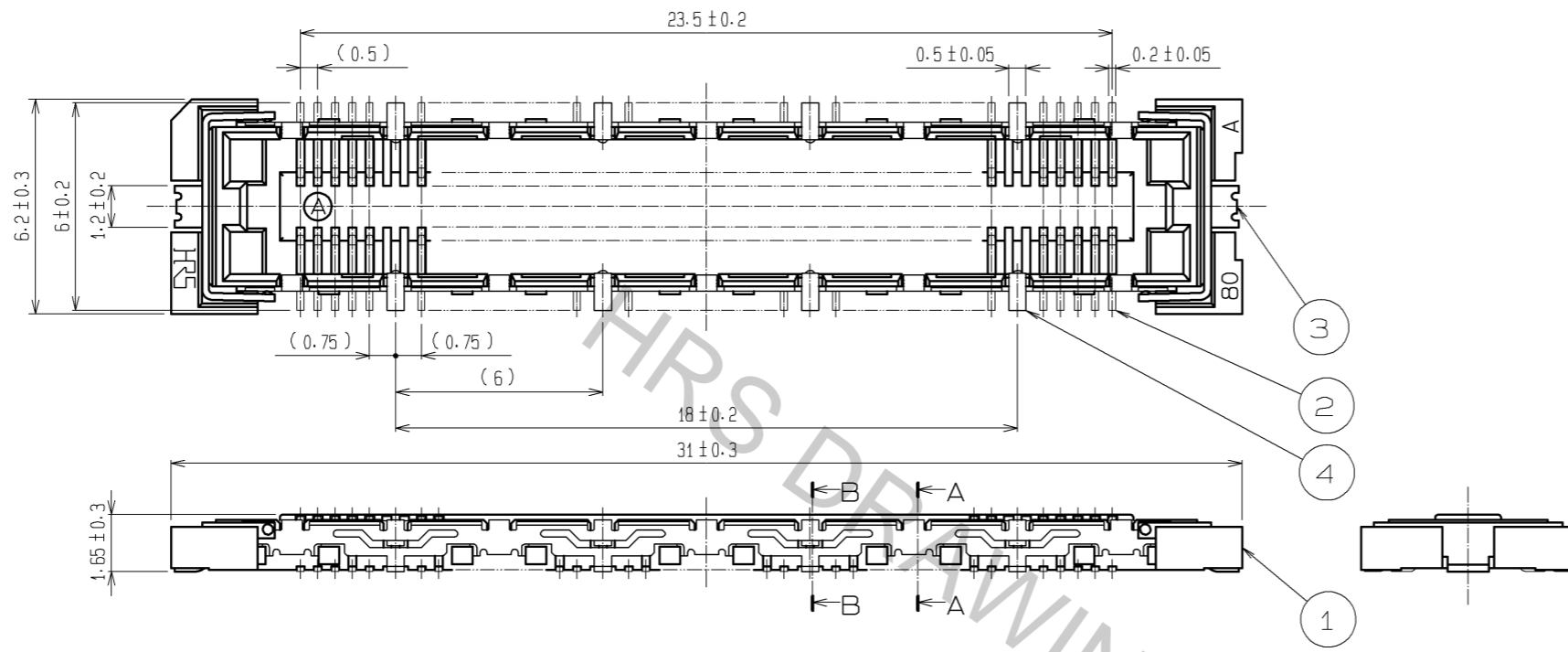
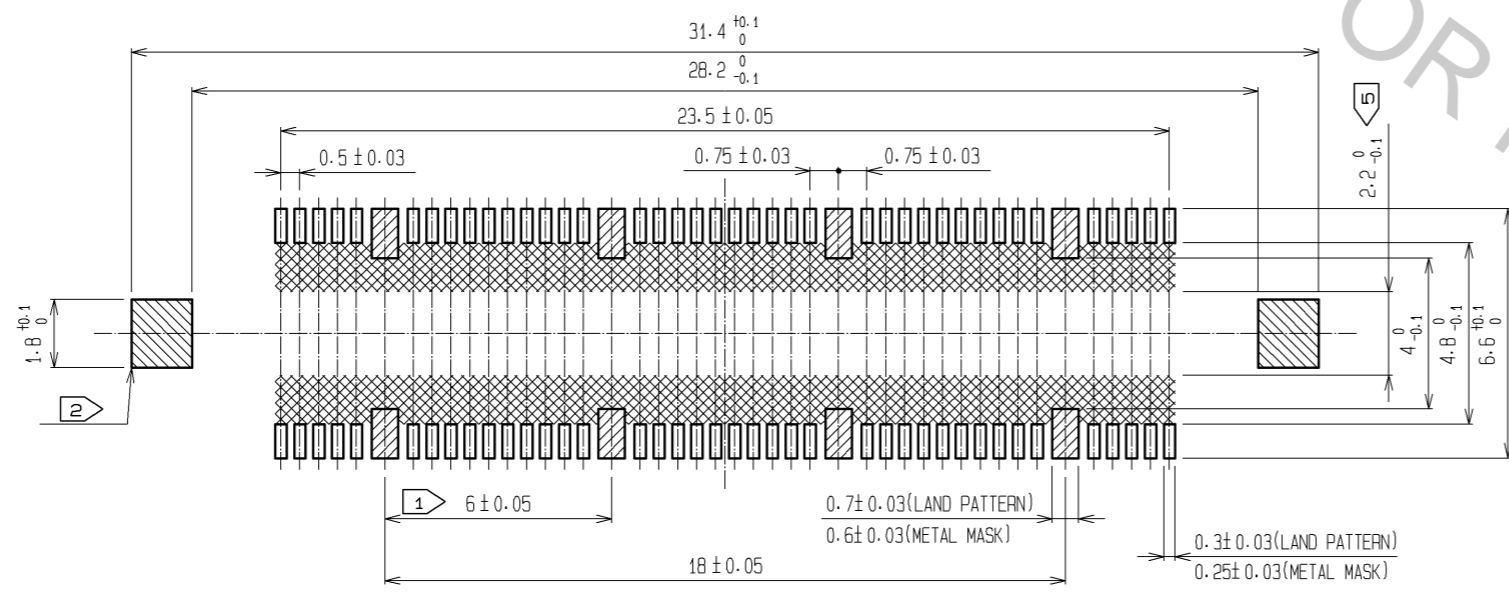


Apr.1.2017 Copyright 2017 HIROSE ELECTRIC CO., LTD. All Rights Reserved.



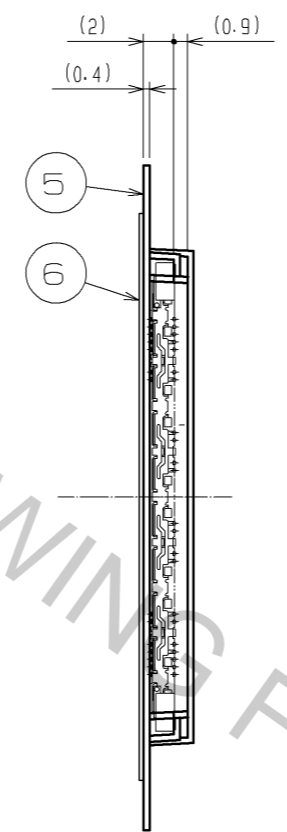
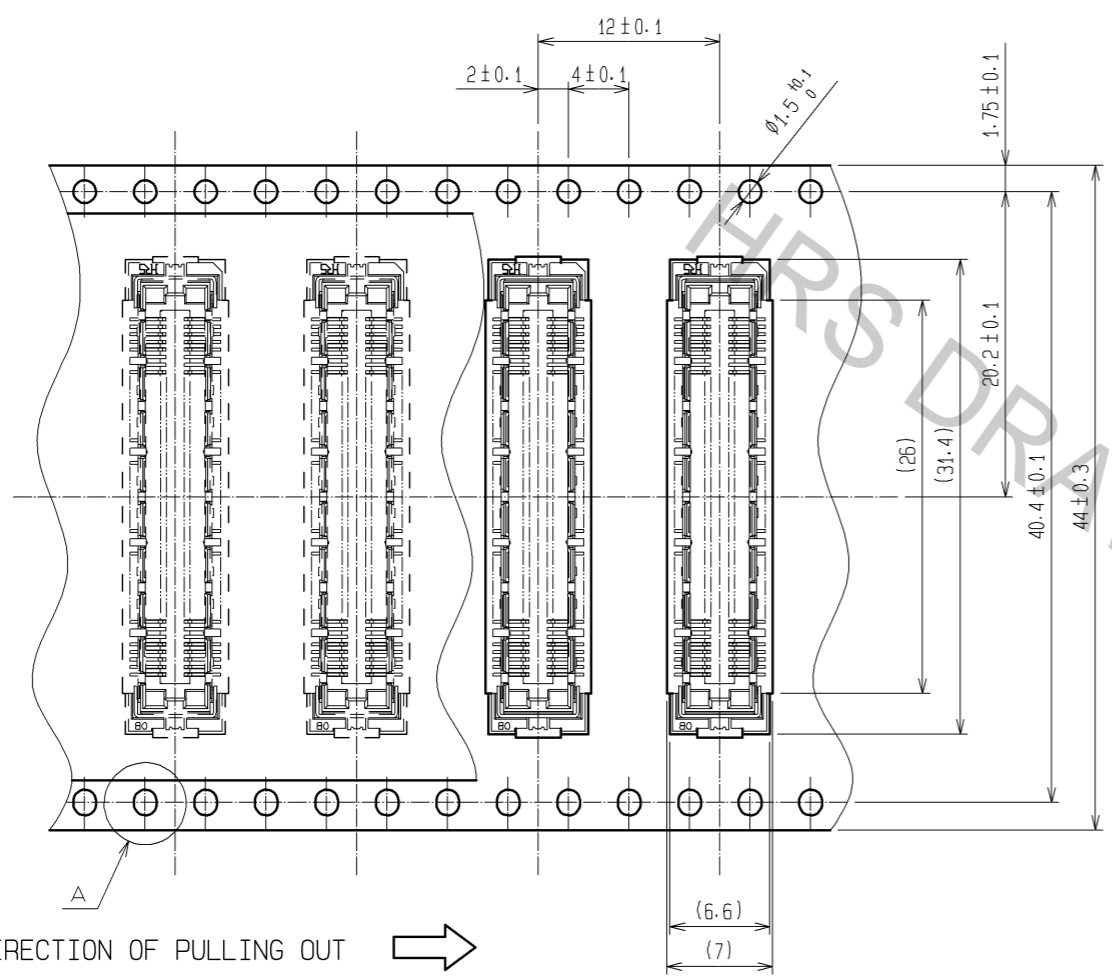
RECOMMENDED LAND PATTERN DIMENSION OF PCB  
(RECOMMENDED METAL MASK THICKNESS : 0.15mm)



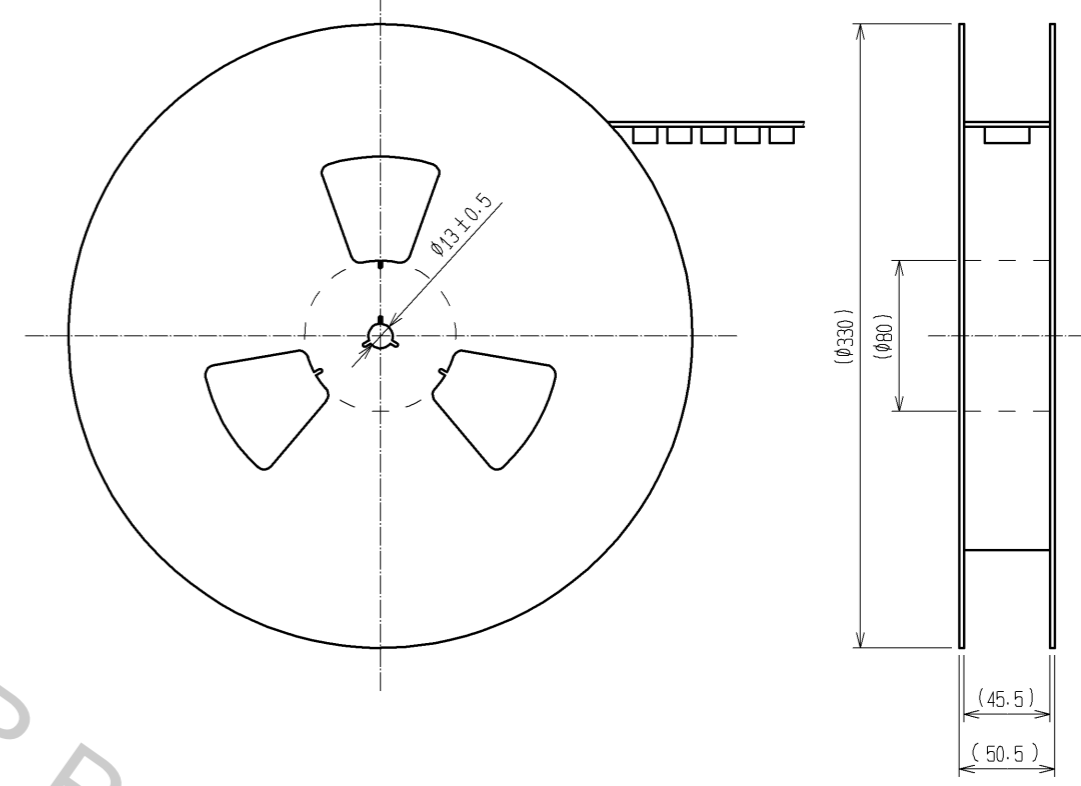
- NOTES
- ① 8 HATCHED PARTS: GROUND CIRCUIT.
  - ② 2 HATCHED PARTS: GROUND CIRCUIT.
  - ③ SMT LEAD-COPLANARITY: 0.1 MAX.
  - ④ THIS PRODUCT HAS NO POLARITY TO PATTERN FOR MOUNTING.
  - ⑤ MAKE SURE WIDTH OF PATTERN IS WITHIN THAT OF LAND .OR LEAD MAY TOUCH PATTERN. (THIS APPLIES TO HATCHED AREA.)
  - ⑥ TO BE EMBOSSED CARRIER TAPED AS SPECIFIED IN SHEET 2.
  - ⑦ THE DIMENSIONS IN PARENTHESES ARE FOR REFERENCE.

| 3, 4  | PHOSPHOR BRONZE | TIN PLATING                     |                         |          |                          |                     |         |      |
|-------|-----------------|---------------------------------|-------------------------|----------|--------------------------|---------------------|---------|------|
|       |                 | CONTACT AREA : GOLD 0.1μm min.  |                         |          |                          |                     |         |      |
| 2     | PHOSPHOR BRONZE | LEAD AREA : GOLD 0.05μm min.    |                         |          |                          |                     |         |      |
|       |                 | UNDER PLATING : NICKEL 1μm min. | 6                       | PET      | (TOP COVER TAPE)         |                     |         |      |
| 1     | LCP             | BEIGE UL94V-0                   | 5                       | PS       | (EMBOSSED CARRIER TAPE)  |                     |         |      |
| NO.   | MATERIAL        | FINISH . REMARKS                | NO.                     | MATERIAL | FINISH . REMARKS         |                     |         |      |
| UNITS | mm              | SCALE                           | 5 : 1                   | COUNT    | DESCRIPTION OF REVISIONS | DESIGNED            | CHECKED | DATE |
| HRS   |                 | HIROSE ELECTRIC CO., LTD.       | APPROVED : HS. OKAWA    | 10.11.30 | DRAWING NO.              | EDC3-152113-21      |         |      |
|       |                 |                                 | CHECKED : HT. YAMAGUCHI | 10.11.29 | PART NO.                 | FX11LB-80S/8-SV(91) |         |      |
|       |                 |                                 | DESIGNED : SY. KAMIGA   | 10.11.29 | CODE NO.                 | CL573-0113-8-91     |         |      |
|       |                 |                                 | DRAWN : YJ. ASAO        | 10.11.29 |                          | 1/2                 |         |      |

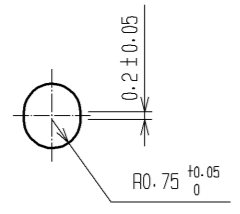
DRAWING FOR PACKING(2:1)



REELED DIMENSION(Free)



A(5:1)



- NOTES
- 1 REEL : 1000 CONNECTORS.
  - 2 MINIMUM 10 COMPARTMENTS FROM BOTH REEL ENDS REMAIN EMPTY.
  - 3 THIS PRODUCT HAS NO POLAVITY TO TAPE AND REEL PACKAGING.
  - 4 THE DIMENSIONS IN PARENTHESES ARE FOR REFERENCE.

|            |             |                     |
|------------|-------------|---------------------|
| <b>HRS</b> | DRAWING NO. | EDC3-152113-21      |
|            | PART NO.    | FX11LB-80S/8-SV(91) |
|            | CODE NO.    | CL573-0113-8-91     |
|            |             | △ 2/2               |