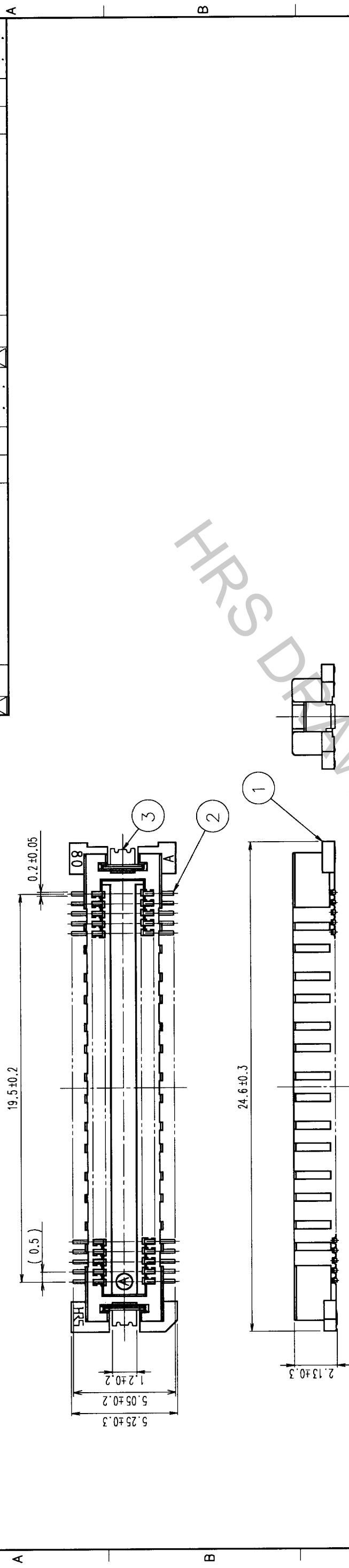
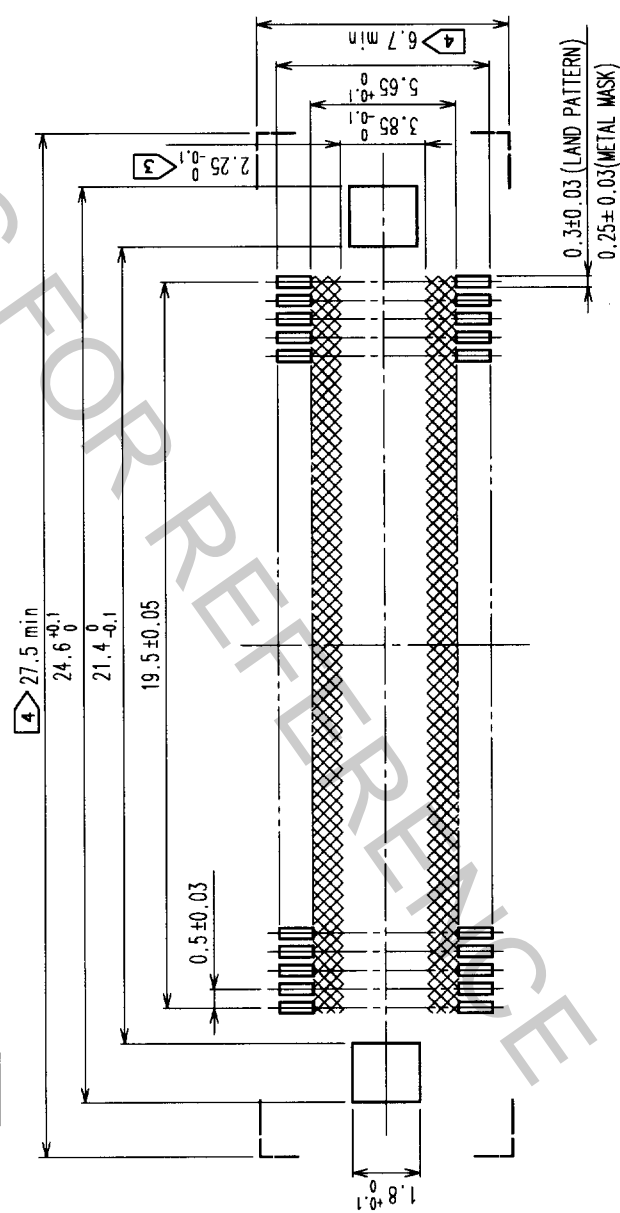


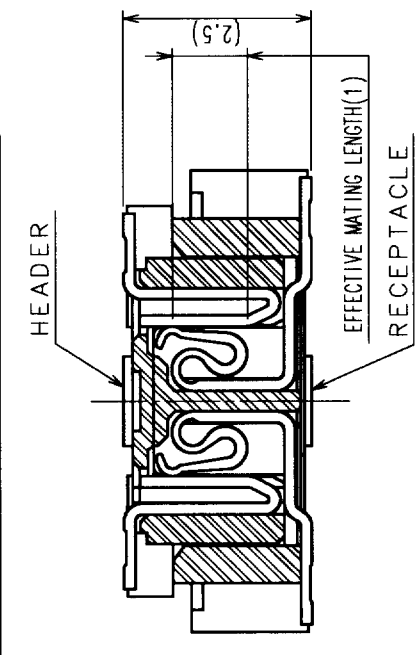
5	6	7	8
COUNT DESCRIPTION OF REVISIONS	BY CHKD	DATE	COUNT DESCRIPTION OF REVISIONS



RECOMMENDED LAND PATTERN DIMENSION OF PCB



SIGNAL PORTION CROSS SECTION (10:1)

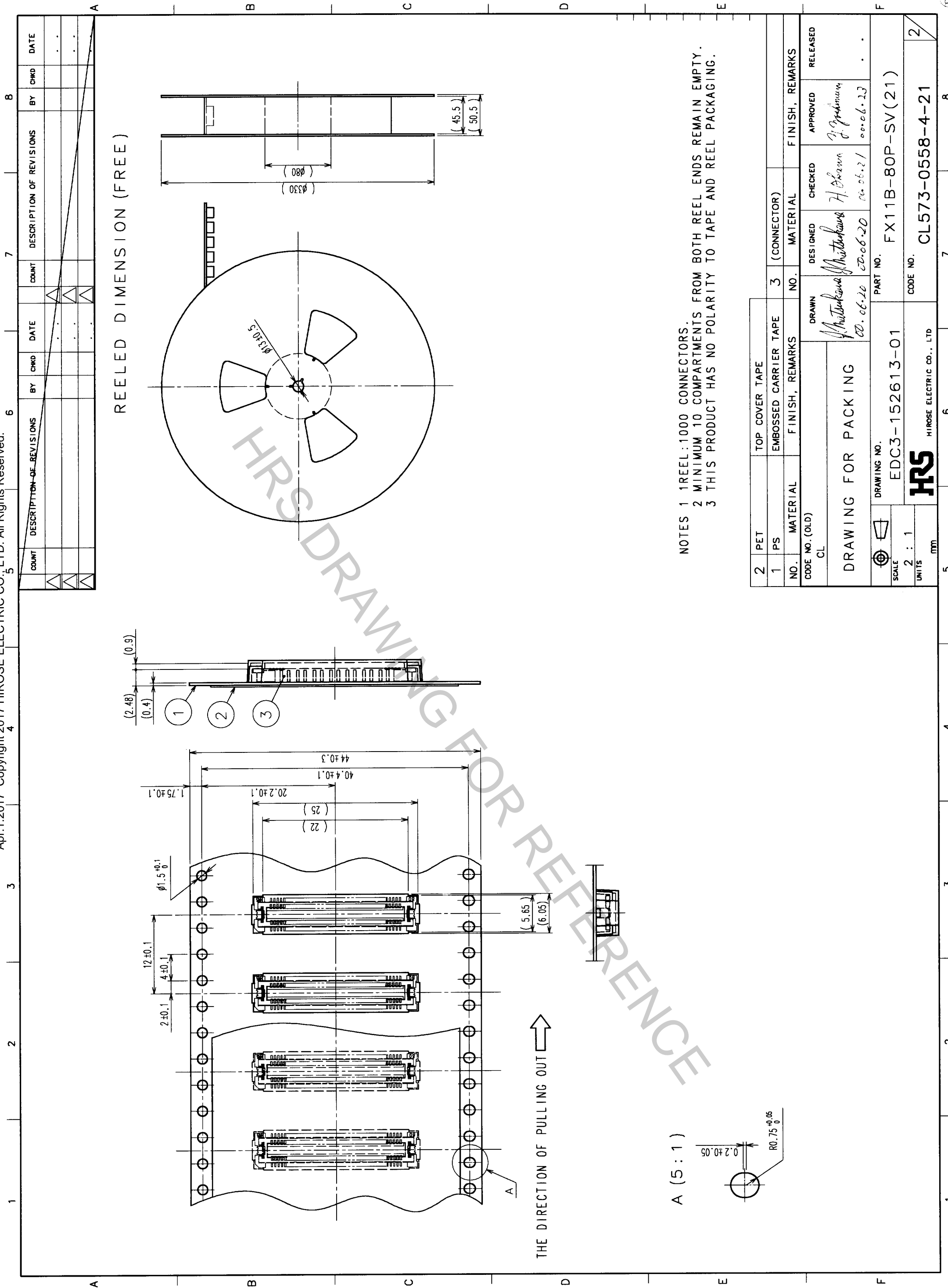


2	COPPER ALLOY	CONTACT AREA: GOLD (0.1µm) OVER NICKEL
1	LCP	LEAD: GOLD FLASH OVER NICKEL
NO.	MATERIAL	FINISH, REMARKS
3	PHOSPHOR BRONZE	TIN PLATED
CODE NO. (OLD)	CL	
DRAWN	DESIGNED	CHECKED
APPROVED	APPROVED	APPROVED
RELEASER	RELEASER	RELEASER

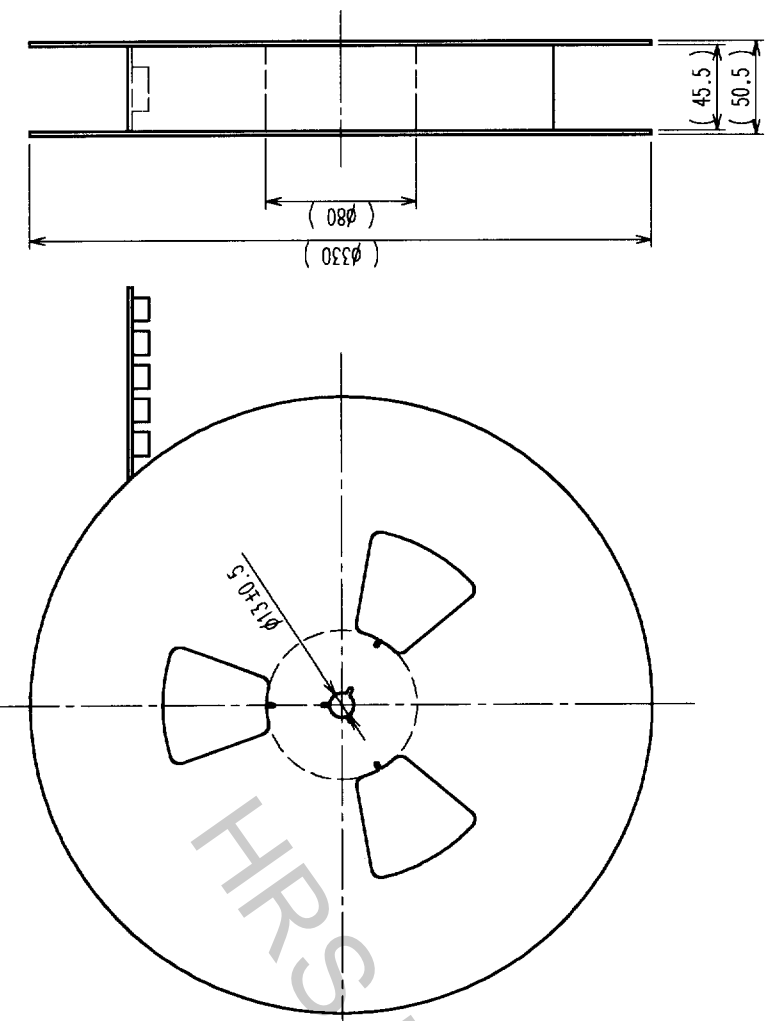
- NOTES
- SMT LEAD-COPLANARITY: 0.1 MAX.
 - THIS PRODUCT HAS NO POLARITY TO PATTERN FOR MOUNTING.
 - MAKE SURE WIDTH OF PATTERN IS WITHIN THAT OF LAND ,OR LEAD MAY TOUCH PATTERN. (THIS APPLIES TO HATCHED AREA.)
 - DO NOT MOUNT OTHER DEVICES ONTO □ AREA ,OR MATING PAIR CANNOT BE MATED.
 - TO BE EMBOSSED CARRIER TAPED AS SPECIFIED IN SHEET 2.

DRAWING NO.	EDC3-152613-01	PART NO.	FX11B-80P-SV(21)
SCALE	5 : 1	CODE NO.	CL573-0558-4-21
UNITS	mm		

TO PCK



REELED DIMENSION (FREE)



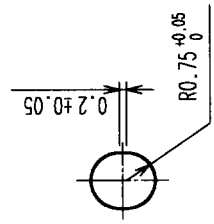
- NOTES 1 REEL: 1000 CONNECTORS.
- 2 MINIMUM 10 COMPARTMENTS FROM BOTH REEL ENDS REMAIN EMPTY.
- 3 THIS PRODUCT HAS NO POLARITY TO TAPE AND REEL PACKAGING.

COUNT	DESCRIPTION OF REVISIONS	BY	CHKD	DATE	COUNT	DESCRIPTION OF REVISIONS	BY	CHKD	DATE
1					1				
2					2				
3					3				

2		TOP COVER TAPE		3		FINISH, REMARKS	
1		EMBOSSED CARRIER TAPE		3		(CONNECTOR)	
NO.	MATERIAL	FINISH, REMARKS	NO.	MATERIAL	DESIGNED	CHECKED	APPROVED
CL					<i>H. Iwano</i>	<i>H. Iwano</i>	<i>T. Yamashita</i>
DRAWING NO. (OLD)		DRAWN		DESIGNED		CHECKED	
CL		<i>H. Iwano</i>		<i>H. Iwano</i>		<i>T. Yamashita</i>	
SCALE		PART NO.		NO.		DATE	
2 : 1		EDC3-152613-01		20.06.20		20.06.21	
UNITS		DRAWING NO.		NO.		DATE	
mm		EDC3-152613-01		20.06.20		20.06.21	
		PART NO.		NO.		DATE	
		FX11B-80P-SV(21)					
		CODE NO.		NO.		DATE	
		CL573-0558-4-21					

TO	
PCK	

A (5 : 1)



THE DIRECTION OF PULLING OUT →