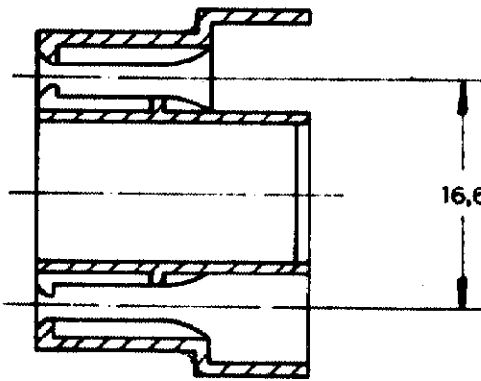
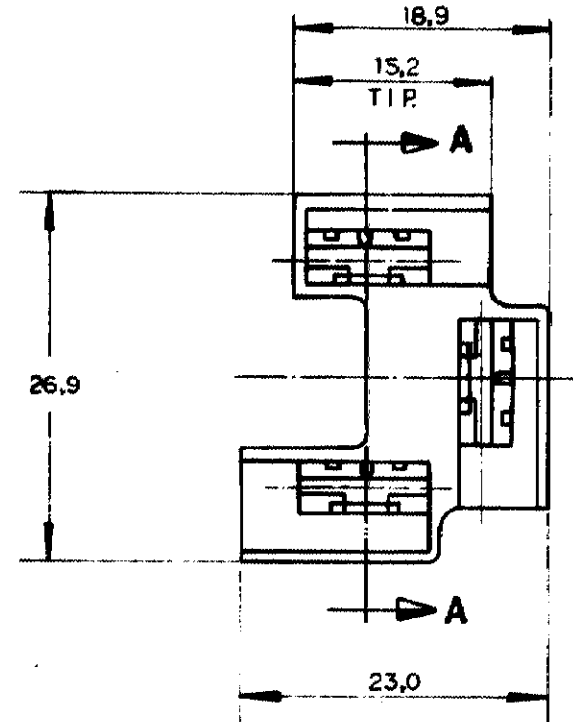
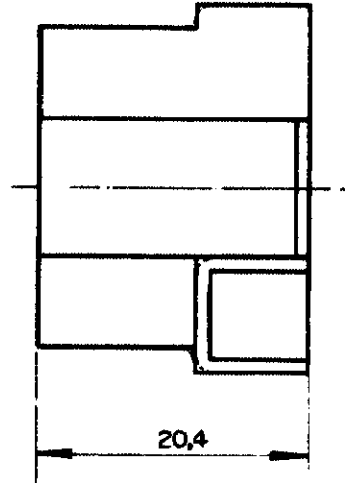
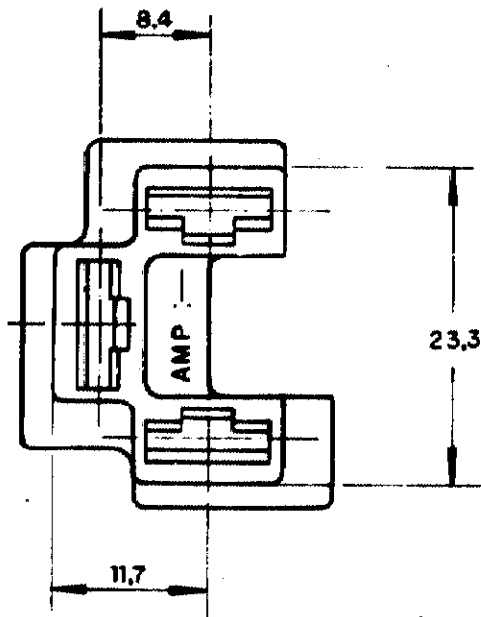


© Copyright 1981 by AMP DO BRASIL - S.P. All International Rights Reserved  
AMP Incorporated products covered by U.S. and Foreign patents and/or patents pending.

REVISIONS						
P	F	ZONE	LTR	DESCRIPTION	DATE	APPROVED
			A	DIM. 11,7 ECA 17,3	10.3.81	[Signature]
			B	MATERIAL ADICIONADO	23.7.82	[Signature]
			C	DESENHO REVISADO	16.11.82	[Signature]
			C1	REVISED PER ECO-09-026444	27NOV09	KK AEG




SEÇÃO A-A

**NOTA:**

- 1- ESPESSURA DE PAREDE 0,8
- 2- OBSOLETE PARTS: OBSOLETE CIS STREAMLINING PER D.RENAUD/D.SINISI

2- OBSOLETE

COR	MATERIAL	PART NO
PRETO	VALOX 325	626213-4
BRANCO	VALOX 325	626213-3
PRETO	NYLON 6.6	626213-2
NATURAL	NYLON 6.6	626213-1

UNLESS OTHERWISE SPECIFIED DIMENSIONS ARE IN MM TOLERANCES ON: DECIMALS ±0.3 ANGLES ±	CONTRACT NO	 <b>AMP DO BRASIL</b> S. Paulo - Brasil			
	DR [Signature] 20/11/81				
	MATERIAL	APPD [Signature]	NAME		
	VER TABELA	APPD	3 WAY FASTIN-ON RECEPT. HSG. (.312 FLAG FASTIN-ON)		
FINISH	DSGN APPD	SIZE	LOC AP.	DRAWING NO	
VER TABELA	OTHER APPD	B		626213	
		SCALE	SHEET	REV C1	

CUSTOMER DRAWING