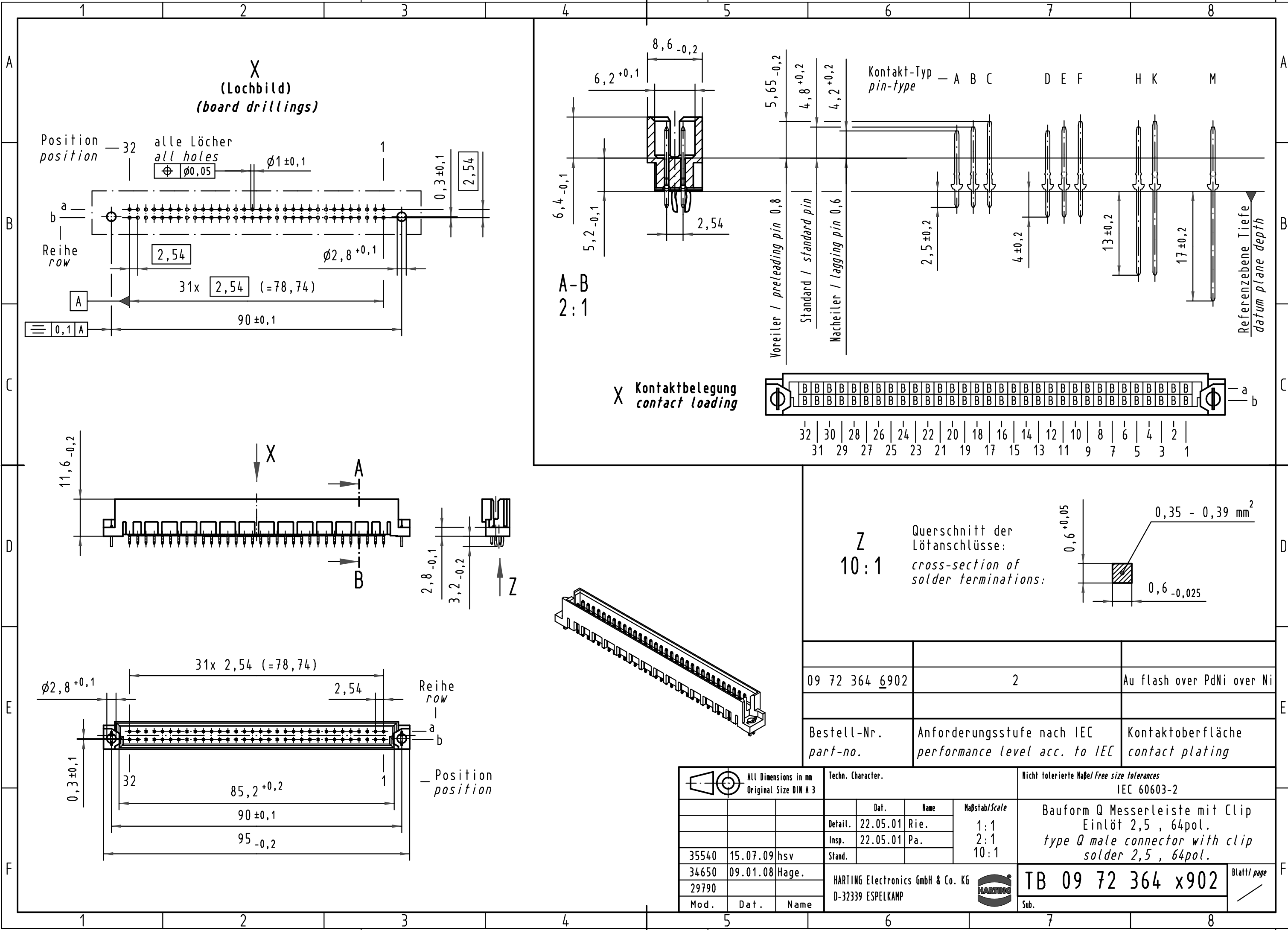
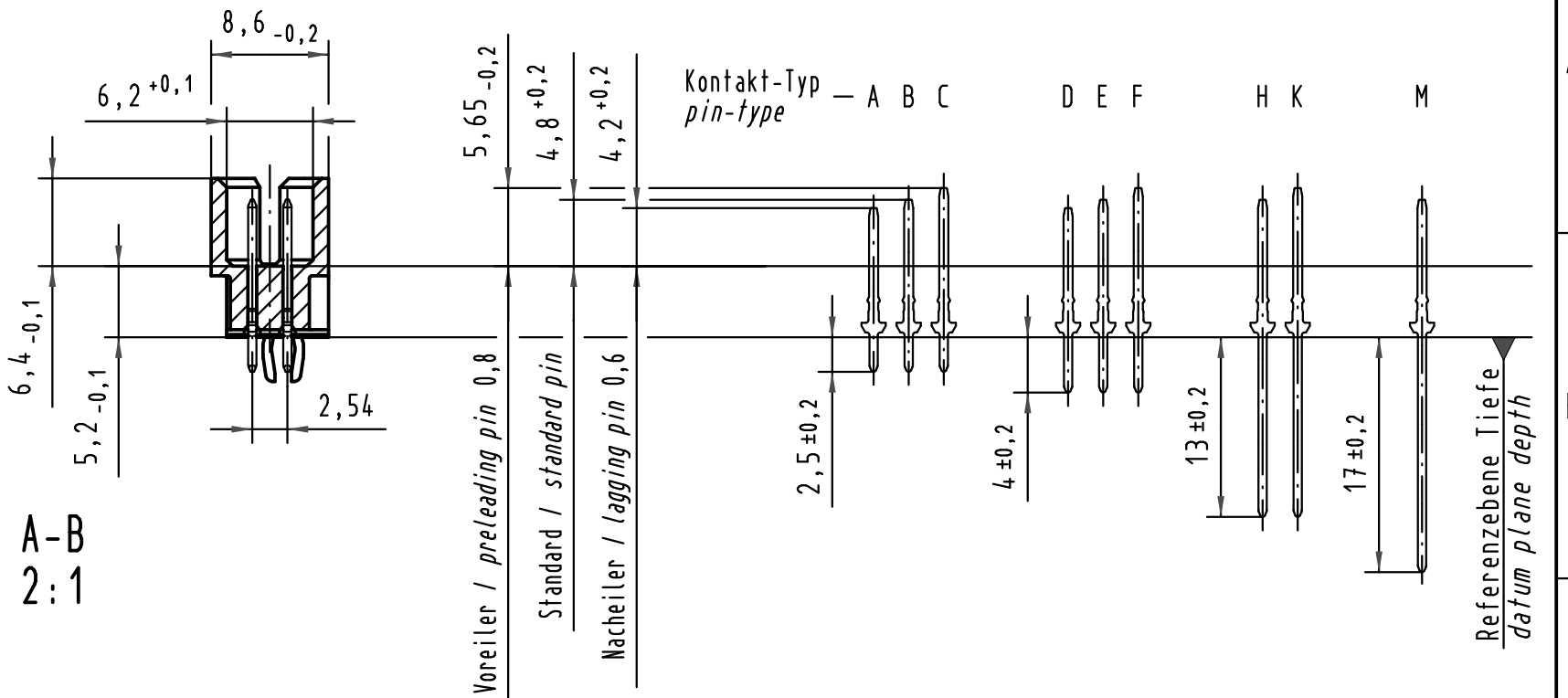
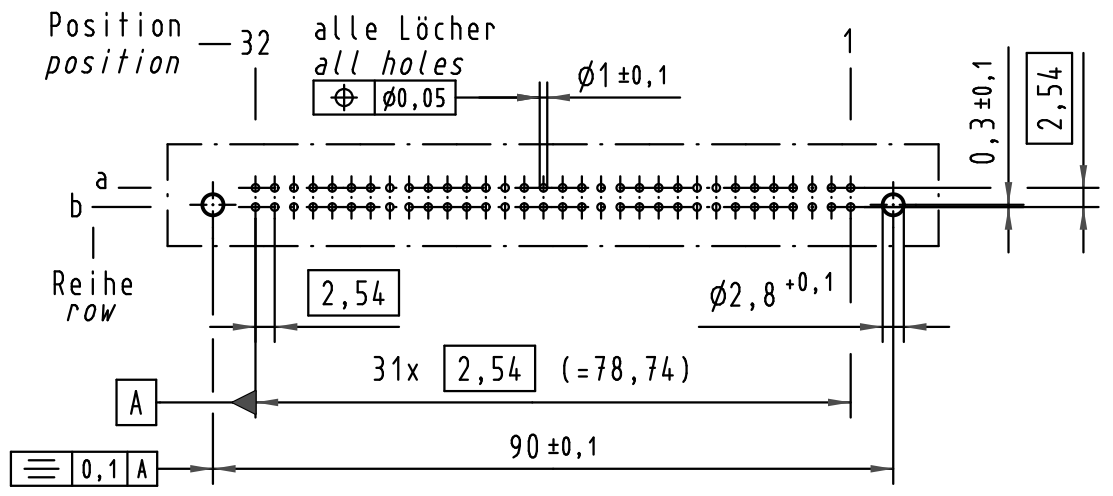


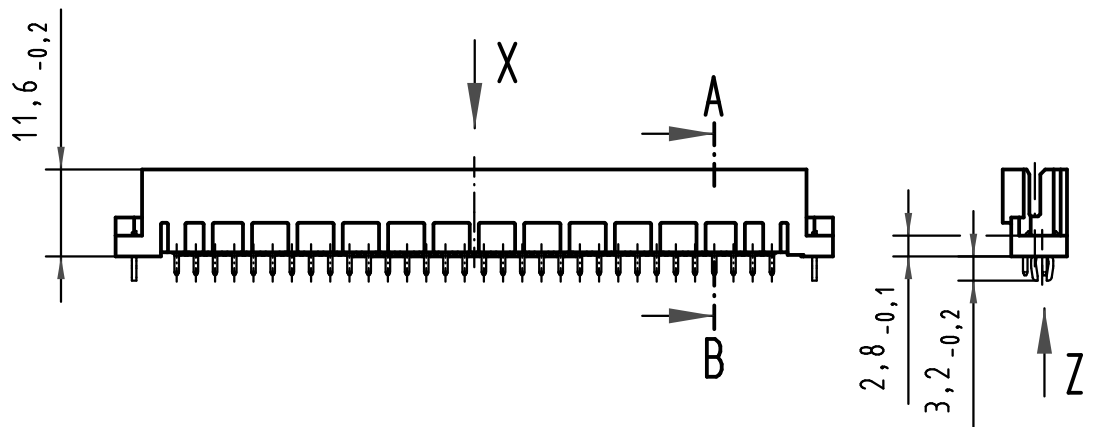
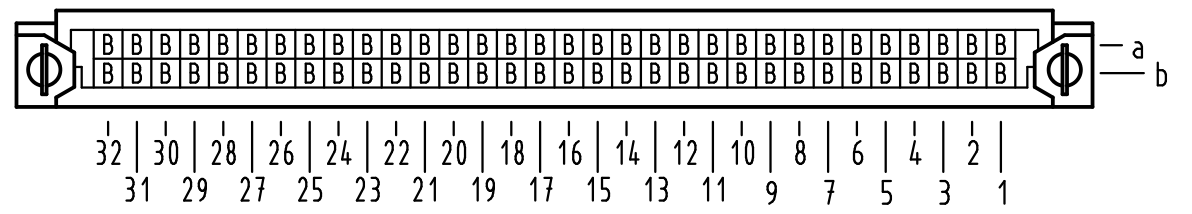
Alle Rechte vorbehalten/ All rights reserved



X
(Lochbild)
(board drillings)

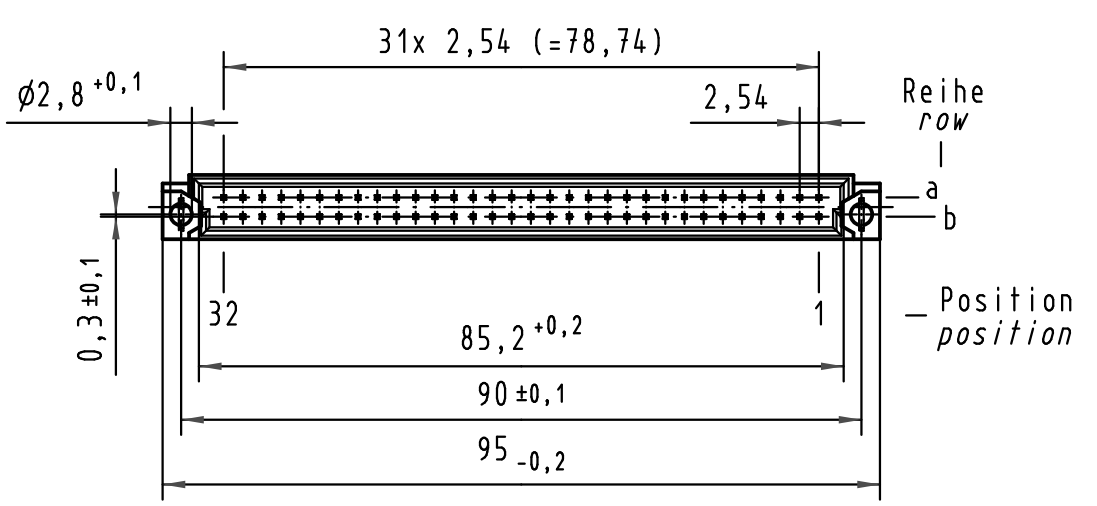
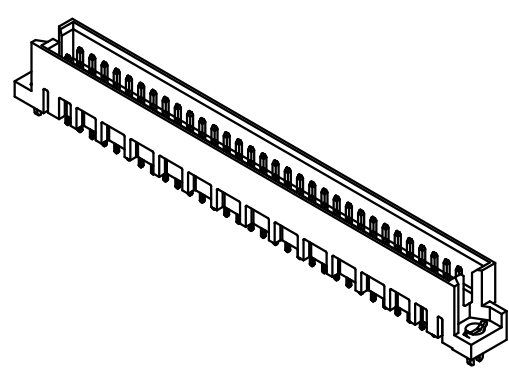
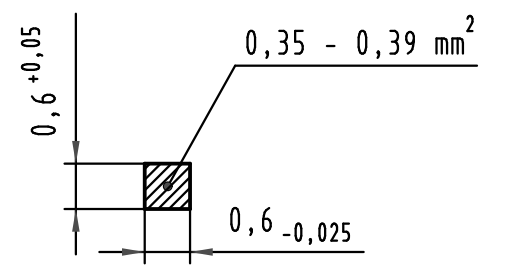


X Kontaktbelegung
contact loading



Z
10:1

Querschnitt der Lötanschlüsse:
cross-section of solder terminations:



| | | |
|----------------------|--|-----------------------------------|
| 09 72 364 6902 | 2 | Au flash over PdNi over Ni |
| Bestell-Nr. part-no. | Anforderungsstufe nach IEC performance level acc. to IEC | Kontaktoberfläche contact plating |

| | | | | | | | | |
|---|----------|-------|--|---------------|-------------------------------------|--|--|--|
| All Dimensions in mm Original Size DIN A 3 | | | Techn. Character. | | | Nicht tolerierte Maß/Free size tolerances IEC 60603-2 | | |
| | | | Dat. | Name | Maßstab/Scale 1:1 2:1 10:1 | Bauform Q Messerleiste mit Clip Einlöt 2,5 , 64pol. type Q male connector with clip solder 2,5 , 64pol. | | |
| | | | Detail. | 22.05.01 Rie. | | | | |
| | | | Insp. | 22.05.01 Pa. | | | | |
| 35540 | 15.07.09 | hsv | Stand. | | | TB 09 72 364 x902 Blatt/page | | |
| 34650 | 09.01.08 | Hage. | | | | | | |
| 29790 | | | | | | | | |
| Mod. | Dat. | Name | HARTING Electronics GmbH & Co. KG D-32339 ESPELKAMP | | | Sub. | | |