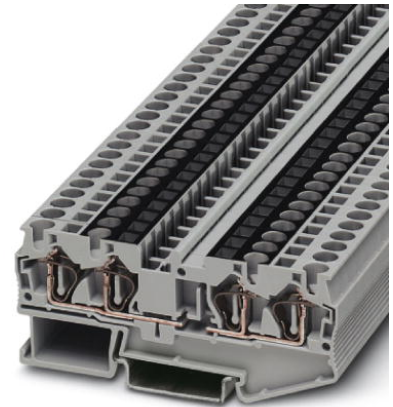


## ST 4-QUATTRO-U


Order No.: 3038639



<http://eshop.phoenixcontact.de/phoenix/treeViewClick.do?UID=3038639>

Feed-through modular terminal block, Type of connection: Spring-cage connection, Cross section: 0.08 mm<sup>2</sup> - 6 mm<sup>2</sup>, AWG 28 - 10, Width: 6.2 mm, Color: gray, Mounting type: NS 35/7.5, NS 35/15

### Commercial data

|                          |   |
|--------------------------|---|
| GTIN (EAN)               |  |
| sales group              | A631  |
| Pack                     | 50 pcs.   |
| Customs tariff           | 85369010  |
| Catalog page information | Page 93 (CL-2009)   |

### Product notes

WEEE/RoHS-compliant since:  
01/01/2003



<http://www.download.phoenixcontact.com>  
Please note that the data given here has been taken from the online catalog. For comprehensive information and data, please refer to the user documentation. The General Terms and Conditions of Use apply to Internet downloads.

### Technical data

#### General

|                       |      |
|-----------------------|------|
| Number of levels      | 1    |
| Number of connections | 2    |
| Color                 | gray |
| Insulating material   | PA   |

|                                    |    |
|------------------------------------|----|
| Inflammability class acc. to UL 94 | V0 |
|------------------------------------|----|

**Dimensions**

|                  |         |
|------------------|---------|
| Width            | 6.2 mm  |
| Length           | 87 mm   |
| Height NS 35/7.5 | 36.5 mm |
| Height NS 35/15  | 44 mm   |

**Technical data**

|                                  |   |
|----------------------------------|---|
| Maximum load current             | 37 A (with 6 mm <sup>2</sup> conductor cross section) |
| Rated surge voltage              | 8 kV  |
| Pollution degree                 | 3   |
| Surge voltage category           | III   |
| Insulating material group        | I   |
| Connection in acc. with standard | IEC 60947-7-1   |
| Nominal current I <sub>N</sub>   | 28 A  |
| Nominal voltage U <sub>N</sub>   | 800 V   |
| Open side panel                  | ja  |

**Connection data**

|   |                        |
|---|------------------------|
| Conductor cross section solid min.  | 0.08 mm <sup>2</sup>   |
| Conductor cross section solid max.  | 6 mm <sup>2</sup>      |
| Conductor cross section stranded min.   | 0.08 mm <sup>2</sup>   |
| Conductor cross section stranded max.   | 4 mm <sup>2</sup>      |
| Conductor cross section AWG/kcmil min.  | 28                     |
| Conductor cross section AWG/kcmil max   | 10                     |
| Conductor cross section stranded, with ferrule without plastic sleeve min.              | 0.14 mm <sup>2</sup>   |
| Conductor cross section stranded, with ferrule without plastic sleeve max.              | 4 mm <sup>2</sup>      |
| Conductor cross section stranded, with ferrule with plastic sleeve min.                 | 0.14 mm <sup>2</sup>   |
| Conductor cross section stranded, with ferrule with plastic sleeve max.                 | 4 mm <sup>2</sup>      |
| 2 conductors with same cross section, stranded, TWIN ferrules with plastic sleeve, min. | 0.5 mm <sup>2</sup>    |
| 2 conductors with same cross section, stranded, TWIN ferrules with plastic sleeve, max. | 1 mm <sup>2</sup>      |
| Type of connection  | Spring-cage connection |

|                           |       |
|---------------------------|-------|
| Stripping length          | 10 mm |
| Internal cylindrical gage | A4    |

**Certificates / Approvals**



Certification CB, CUL, GOST, UL, VDE-PZI

**Accessories**

| Item            | Designation                 | Description  |
|-----------------|-----------------------------|--|
| <b>Assembly</b> |                             |  |
| 3030815         | ATP-ST QUATTRO              | Partition plate, Length: 90.9 mm, Width: 2 mm, Height: 45 mm, Color: gray  |
| 3022218         | CLIPFIX 35                  | Snap-on end bracket, for 35 mm NS 35/7.5 or NS 35/15 DIN rail, can be fitted with Zack strip ZB 8 and ZB 8/27, terminal strip marker KLM 2 and KLM, width: 9.5 mm, color: gray |
| 3030527         | D-ST 4-QUATTRO              | End cover, Length: 87 mm, Width: 2.2 mm, Height: 36.5 mm, Color: gray  |
| 3036615         | DS-ST 4                     | Cover segment, Length: 87 mm, Height: 36.5 mm, Color: gray   |
| 1201442         | E/UK                        | End clamp, for assembly on NS 32 or NS 35/7.5 DIN rail   |
| 0801762         | NS 35/ 7,5 CU UNPERF 2000MM | DIN rail, material: Copper, unperforated, height 7.5 mm, width 35 mm, length: 2 m  |
| 0801733         | NS 35/ 7,5 PERF 2000MM      | DIN rail, material: Steel, galvanized and passivated with a thick layer, perforated, height 7.5 mm, width 35 mm, length: 2 m   |
| 0801681         | NS 35/ 7,5 UNPERF 2000MM    | DIN rail, material: Steel, unperforated, height 7.5 mm, width 35 mm, length: 2 m   |
| 1201756         | NS 35/15 AL UNPERF 2000MM   | DIN rail, deep-drawn, high profile, unperforated, 1.5 mm thick, material: Aluminum, height 15 mm, width 35 mm, length 2 m  |
| 1201895         | NS 35/15 CU UNPERF 2000MM   | DIN rail, material: Copper, unperforated, 1.5 mm thick, height 15 mm, width 35 mm, length: 2 m   |
| 1201730         | NS 35/15 PERF 2000MM        | DIN rail, material: Steel, perforated, height 15 mm, width 35 mm, length: 2 m  |
| 1201714         | NS 35/15 UNPERF 2000MM      | DIN rail, material: Steel, unperforated, height 15 mm, width 35 mm, length: 2 m  |
| 1201798         | NS 35/15-2,3 UNPERF 2000MM  | DIN rail, material: Steel, unperforated, 2.3 mm thick, height 15 mm, width 35 mm, length: 2 m  |

### Bridges

|         |          |   |
|---------|----------|---|
| 3030336 | FBS 2-6  | Plug-in bridge, Number of positions: 2, Color: red  |
| 3030242 | FBS 3-6  | Plug-in bridge, Number of positions: 3, Color: red  |
| 3030255 | FBS 4-6  | Plug-in bridge, Number of positions: 4, Color: red  |
| 3030349 | FBS 5-6  | Plug-in bridge, Number of positions: 5, Color: red  |
| 3030271 | FBS 10-6 | Plug-in bridge, Number of positions: 10, Color: red |
| 3030365 | FBS 20-6 | Plug-in bridge, Number of positions: 20, Color: red |

### Marking

|         |               |   |
|---------|---------------|---|
| 3030954 | WST 4         | Warning cover, 5-pos., for terminal width: 6.2 mm   |
| 1050499 | ZB 6:SO/CMS   | Zack strip, 10-section, divisible, special printing, marking according to customer requirements               |
| 0803650 | ZBFM 6:SO/CMS | Special printing, Zack marker sheet, flat, 100-section, divisible, marking according to customer requirements |

### Plug/Adapter

|         |           |                                 |
|---------|-----------|---------------------------------|
| 3002885 | ISH 4/0,5 | Insulating sleeve, Color: gray  |
| 3002898 | ISH 4/1,0 | Insulating sleeve, Color: black |
| 0201744 | MPS-MT    | Test plugs                      |
| 3030925 | PAI-4     | Test adapter, Color: gray       |
| 3030996 | PS-6      | Test adapter, Color: red        |
| 0201647 | RPS       | Reducing plug, Color: gray      |

### Tools

|         |               |   |
|---------|---------------|---|
| 1204517 | SZF 1-0,6X3,5 | Actuation tool, for ST terminal blocks, also suitable for use as a bladed screwdriver, size: 0.6 x 3.5 x 100 mm, 2-component grip, with non-slip grip |
|---------|---------------|---|

### Diagrams/Drawings

Circuit diagram



**Address**

PHOENIX CONTACT Deutschland GmbH  
Flachmarktstr. 8  
32825 Blomberg, Germany  
Phone +49 5235 3 12000  
Fax +49 5235 3 41200  
<http://www.phoenixcontact.de>



© 2011 Phoenix Contact  
Technical modifications reserved;