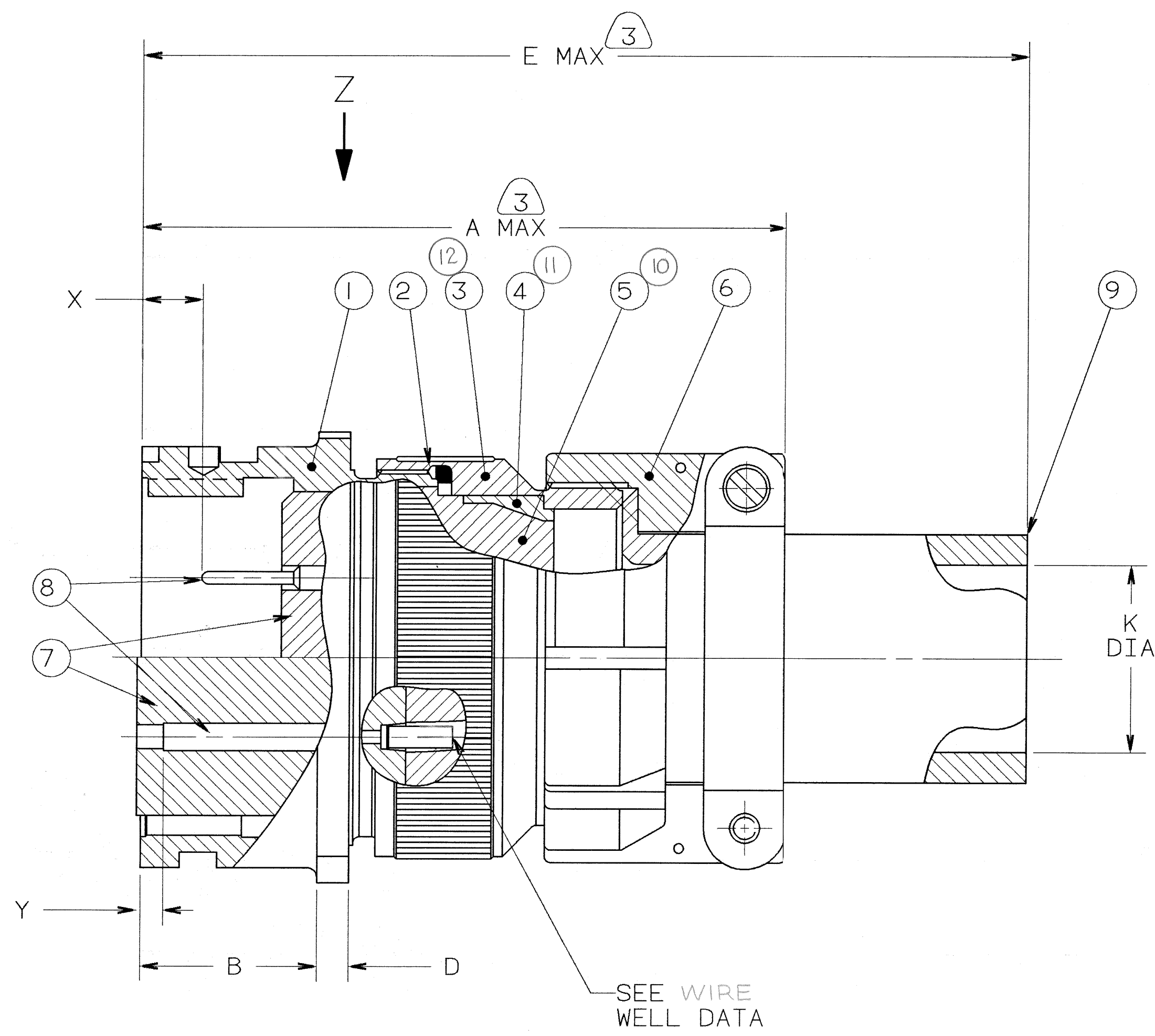
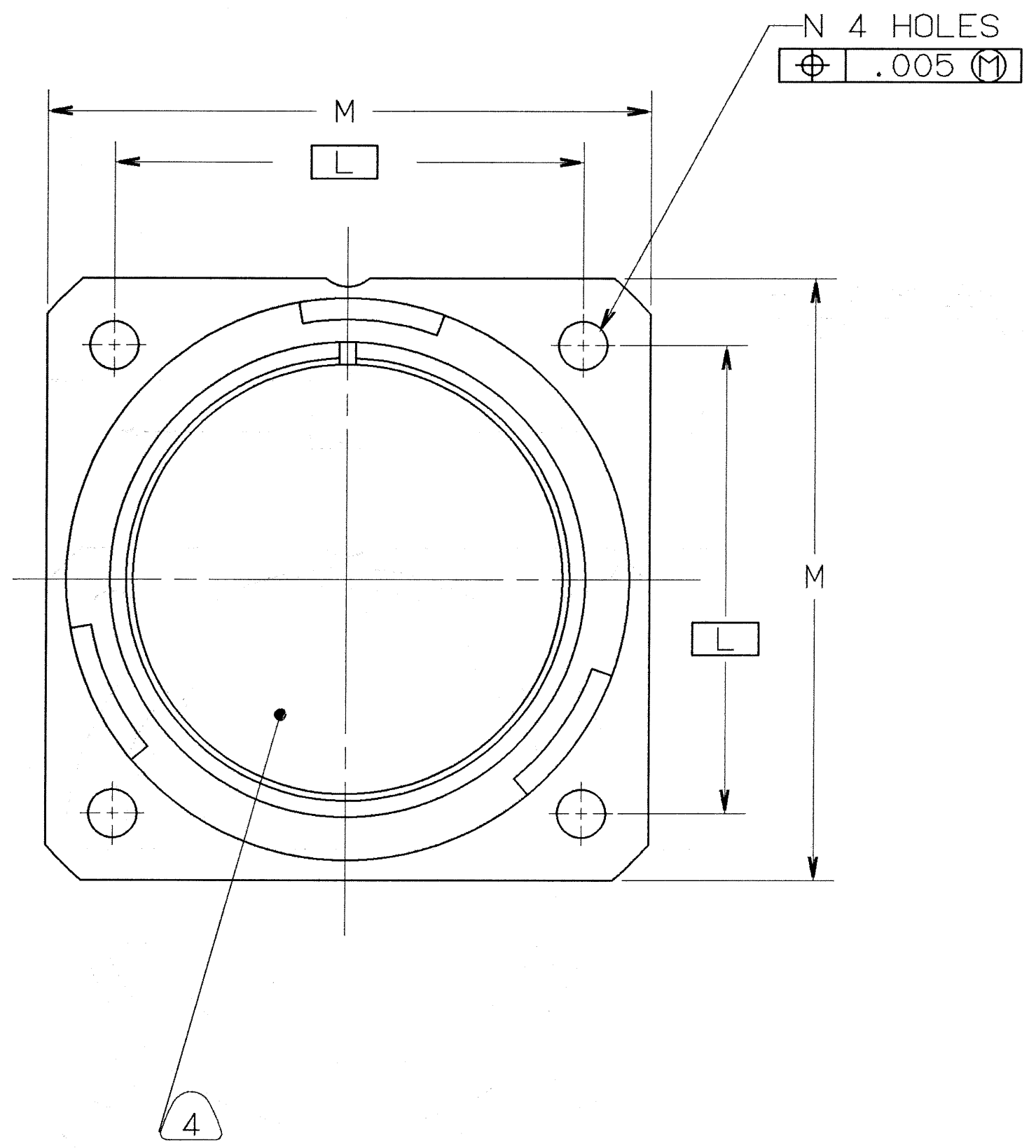


CONTACT SIZE	SHELL SIZE	X	Y ±.040
16 SHORT	10SL, 14S, 16S	.087±.039	.079
16 LONG	14, 16, THRU 40	.260 <sup>+</sup> .052 .041	.102
12	14, 16, THRU 40	.118 <sup>+</sup> .039 .056	.102
4,8,0	14, 16, THRU 40	.091±.039	.102

REVISIONS				
ZONE	LTR	DESCRIPTION	DATE	APPROVED
	A	INITIAL RELEASE NUM: 70091-140		
	B	(CL II) SEE ECN 27941	7-27-93 P. J. ...	
	C	(CL II) SEE CHG NOTICE ECN: 28357	6-9-94 Prescott	



FIND NO.	QTY RECD.	FSCM NO.	PART NUMBER	DESCRIPTION	NOTE REF.
12	1		10-581821-XX3	ADAPTER	3,14
11	1		10-581819-XX1	SLEEVE	14
10	1		SEE COLUMN	GROMMET	13,14
9	1		SEE COLUMN	SLEEVE	
8	SEE NOTE 10			CONTACT	3
7	1		10-748XX-XXX	INSERT	
6	1		SEE COLUMN	CLAMP ASSY	
5	1		10-607XX-XX	GROMMET	15
4	1		10-564869-XX	SLEEVE	15
3	1		10-564867-XX3	ADAPTER	15,3
2	1		10-101379-XX1	GASKET	8
1	1		SEE COLUMN	SHELL	

SEE SHEET 2  
NOTES:

THE USE OF THIS DOCUMENT IS UNLIMITED. HOWEVER, DOCUMENTS REFERENCED HEREON MAY CONTAIN LIMITED RIGHTS DATA.

COMPANY ID: 2  
 CODED/MS/CUST: Y  
 INTERNAL: N  
 LOTNO: N  
 DATE CODE: 9-3895  
 SEE PRINT: N

UNLESS OTHERWISE SPECIFIED  
 LINEAR DIMENSIONS ARE IN INCHES.  
 TOLERANCES: .XXX±.010,  
 .XX ±.03, .X ±.1, ANGLES ±2°.  
 OTHER STANDARDS PER 9-3800  
 AND DDD-D-1000. NOTE REF= XX

SPECIFICATIONS	SIGNATURES	DATES	PARTS LIST	
MATERIAL SPEC. N/A	PREPARED: MCELLIGOTT CHECKED: J. J. Miller MATERIAL: [Signature]	4/24/91 4-22-91	AMPHENOL CORPORATION BENDIX CONNECTOR OPERATIONS SIDNEY, N.Y.	
PROCESS SPEC. SEE NOTE 5	APPROVED: [Signature] 1ST PART NO. 71-581453-215	4-22-91 5-3-91	SIZE: D 77820	FSCM NO. 71-581440/459
			SCALE: NONE	WT. REF 71-581580/599

COMPUTER GENERATED DRAWING

00000001

TAB.

71-581440/459

SHEET 1 OF 2

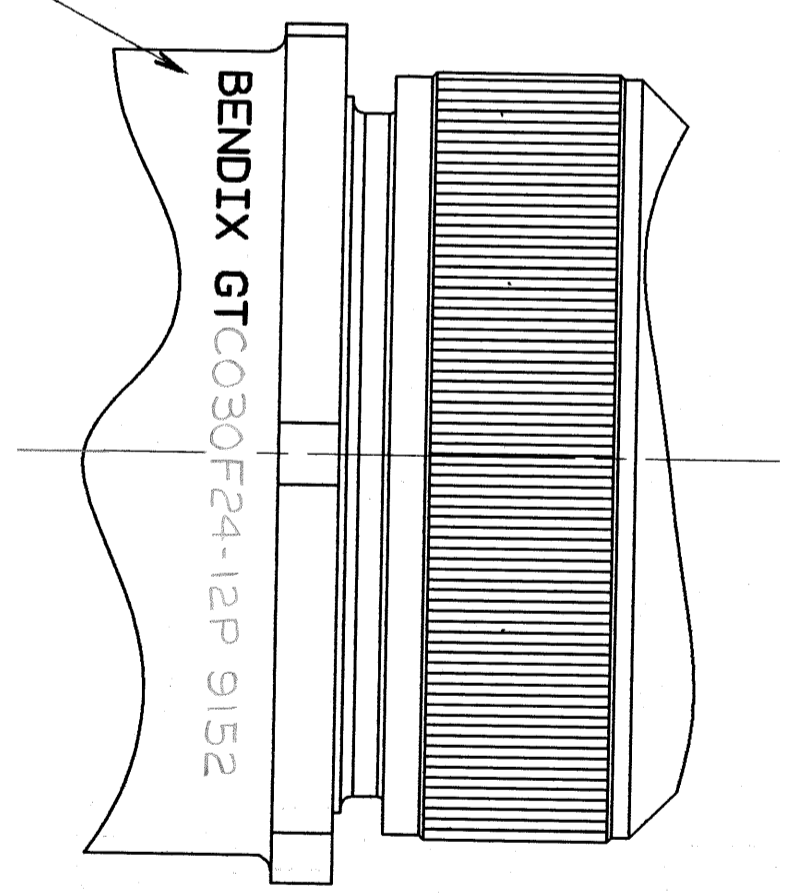
ASSEMBLY NUMBER	SHELL SIZE	GT NUMBER	GROMMET PART NUMBER	SHELL	CLAMP ASSY	SLEEVE	4		3		2		1
							A MAX	B +.016 -.000	D ±.008	E MAX	K MIN	L □	M ±.012
71-581440-()	8S	NOT AVAILABLE											
71-581441-()	10S	NOT AVAILABLE											
71-581442-()	10SL	GTC030F10SL-C)	10-581825-()	10-580713-113	10-824810- 4	10-824802- 4	2.520	.717	.110	4.878	.218	.717	1.000 .126
71-581443-()	12S	NOT AVAILABLE											
71-581444-()	12	NOT AVAILABLE											
71-581445-()	14S	GTC030F14S-C)	10-581827-()	10-580713-143	10-824810- 7	10-824802- 6	2.598	.717	.126	4.878	.310	.906	1.181 .126
71-581446-()	14	NOT AVAILABLE											
71-581447-()	16S	GTC030F16S-C)	10-581829-()	10-580713-163	10-824810- 8	10-824802- 8	2.914	.717	.126	4.878	.435	.969	1.280 .126
71-581448-()	16	GTC030F16-C)	10-581830-()	10-580713-173	10-824810- 8	10-824802- 8	2.854	.846	.126	5.019	.435	.969	1.280 .126
71-581449-()	18	GTC030F18-C)	10-581831-()	10-580713-183	10-824810-10	10-824802-10	3.190	.907		5.080	.560	1.063	1.378 .126
71-581450-()	20	GTC030F20-C)	10-581832-()	10-580713-203	10-824810-12	10-824802-12	3.190	.907	.157	5.080	.623	1.157	1.496 .126
71-581451-()	22	GTC030F22-C)	10-581833-()	10-580713-223	10-824810-12	10-824802-12	3.190	.907		5.080	.623	1.252	1.614 .126
71-581452-()	24	GTC030F24-C)	10-581834-()	10-580713-243	10-824810-16	10-824802-16	3.442	.907		5.017	.748	1.374	1.752 .146
71-581453-()	28	GTC030F28-C)	10-581835-()	10-580713-283	10-824810-16	10-824802-16	3.482	.947		5.057	.748	1.563	2.000 .146
71-581454-()	32	GTC030F32-C)	10-581836-()	10-580713-323	10-824810-20	10-824802-20	3.419	.947		4.994	.935	1.752	2.244 .169
71-581455-()	36	GTC030F36-C)	10-581837-()	10-580713-363	10-824810-24	10-824802-24	4.206	.947		5.388	1.248	1.937	2.500 .169
71-581456-()	40	GTC030F40-C)	NOT AVAILABLE	NOT AVAILABLE									
71-581457/459		NOT AVAILABLE											

SEE NOTE 13

TO COMPLETE, ADD APPLICABLE INSERT ARRANGEMENT SUFFIX PER 9-2437

WIRE WELL DATA					
CONTACT SIZE	0	4	8	12	16
WELL DIA	.453±.005	.281+.005 -.004	.179+.004 -.002	.098+.004 -.001	.063+.004 -.001
WELL DEPTH	+.031 -.000	.592	.500	.500	.250

BLACK INK STAMP PER 9-3856-5  
"BENDIX", GT NUMBER (SEE COLUMN)  
& DATE CODE (9-3895).  
CHARACTERS TO BE .094-.125 HIGH.  
AND LOCATED APPROX AS SHOWN  
EXAMPLE:  
BENDIX GTC030F24-12P 9152



VIEW AT Z

- 7. FOR MATING CONNECTOR ASSEMBLIES, SEE 71-580450/469 & OTHERS.
  - 6. SEE WORK ORDER FOR PERMISSIBLE ADDITIONAL OR ALTERNATE STAMPING.
  - 5. PROCESS SPEC:  
ASSY 9-9238  
TEST 9-3106-18  
9-3856-5, 9-3895, 9-2437, 9-1936
  - 4. INSERTS ARE NOT REMOVABLE.
  - 3. DRAWING ILLUSTRATES FINAL ASSEMBLY. FOR STORAGE & SHIPPING, ADAPTER, CLAMP AND SLEEVE MUST BE LOOSELY COUPLED.
  - 2. FOR CONTACT SIZE, SPACING & SERVICE RATING, SEE MIL-STD-1651 OR L-11908-()/L-11948-().
  - 1. UNITS MEET THE APPLICABLE REQUIREMENTS OF MIL-C-5015.
- 15. INDICATED ITEMS, (F/N'S 3, 4 & 5) ARE APPLICABLE TO CONNECTORS CONTAINING CONTACT ARRANGEMENTS OTHER THAN THOSE SPECIFIED IN NOTE 14.
  - 14. INDICATED ITEMS, (F/N'S 10, 11 & 12) ARE APPLICABLE TO CONNECTORS CONTAINING CONTACT ARRANGEMENTS WITH SIZE 4 & 8 SIZE CONTACTS.
  - 13. TO COMPLETE INDICATED GROMMET PART NO. ADD APPLICABLE ARRANGEMENT SUFFIX.
  - 12. CONTACTS ARE SHIPPED UNASSEMBLED.
  - 11. FOR FINAL INSTALLATION, CONTACTS MUST BE ASSEMBLED INTO ALL INSERT HOLES. ALL UNUSED GROMMET HOLES MUST BE FILLED WITH THE APPROPRIATE SIZE SEALING PLUG.
  - 10. PACKAGE PER PRODUCTION PROCESS SHEET.
  - 9. SEE SEPARATE PARTS LIST FOR COMPONENT PART NUMBERS AND QUANTITIES.
  - 8. APPLY A LIGHT FILM OF LUBRICANT 9-1936 TO GASKET.

NOTES:

THE USE OF THIS DOCUMENT IS UNLIMITED. HOWEVER, DOCUMENTS REFERENCED HEREON MAY CONTAIN LIMITED RIGHTS DATA.

SIZE	FSCM NO.	REV
D	77820	C
SCALE	WT.	REF
		SHEET 2

COMPUTER GENERATED DRAWING

71-581440/459

A