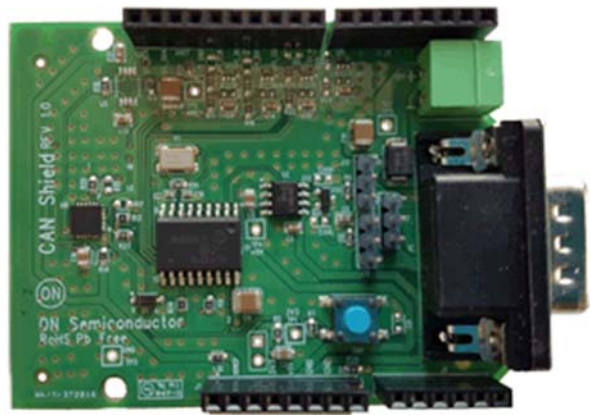




## CAN-GEVB: CAN (Controller Area Network) Driver Shield Evaluation Board

The CAN Driver Shield Evaluation Board demonstrates the NCV7342 CAN transceiver, an interface between a controller area network (CAN) protocol controller and the physical bus that can be used in both 12 V and 24 V systems and is connected to the IoT through the PCA9655E's 16 bits of General Purpose parallel Input and Output (GPIO) expansion through the I2C-bus and SMBus.



CAN-GEVB	Active	Pb-free	CAN (Controller Area Network) Driver Shield Evaluation Board
----------	--------	---------	--