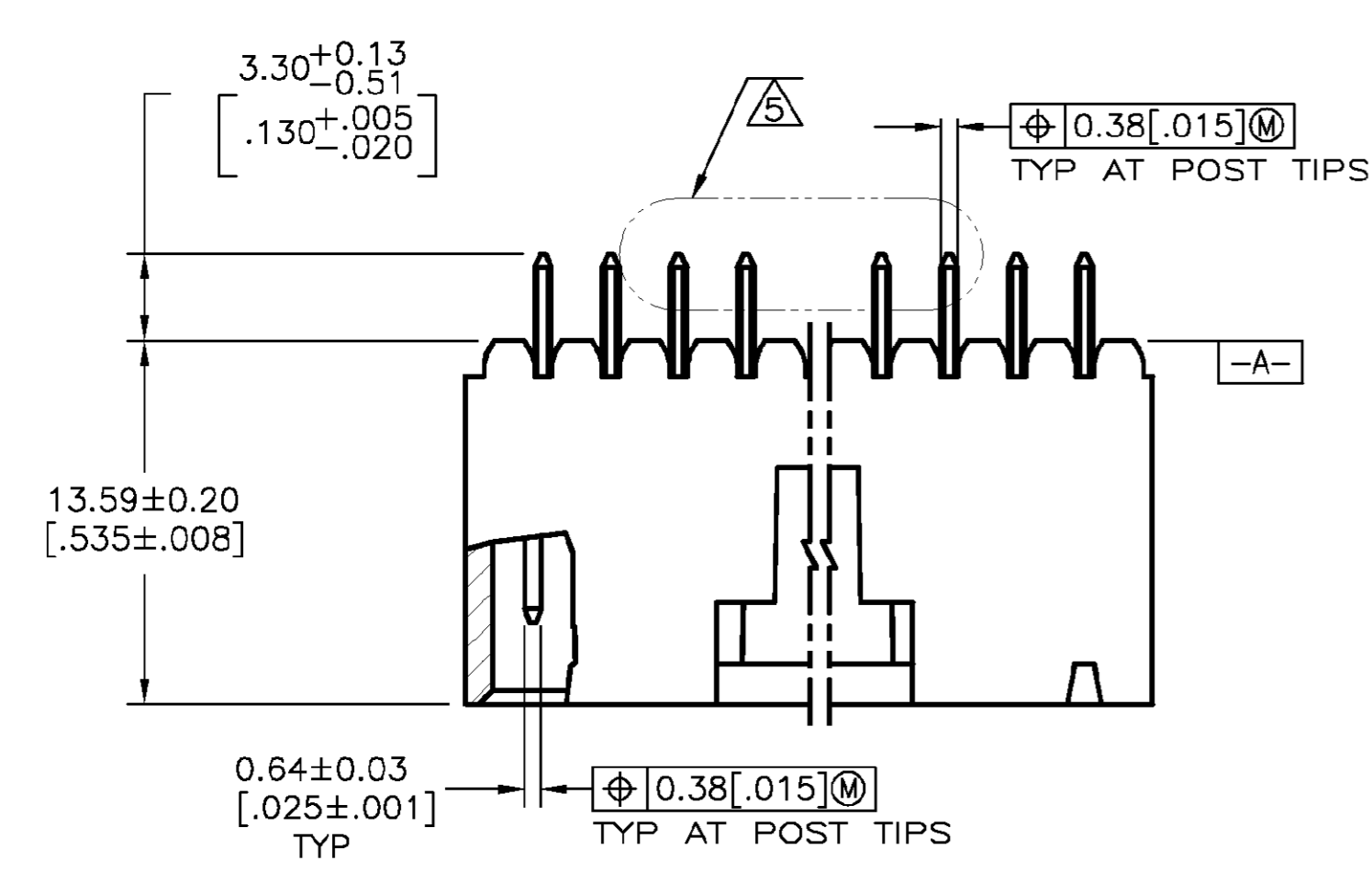
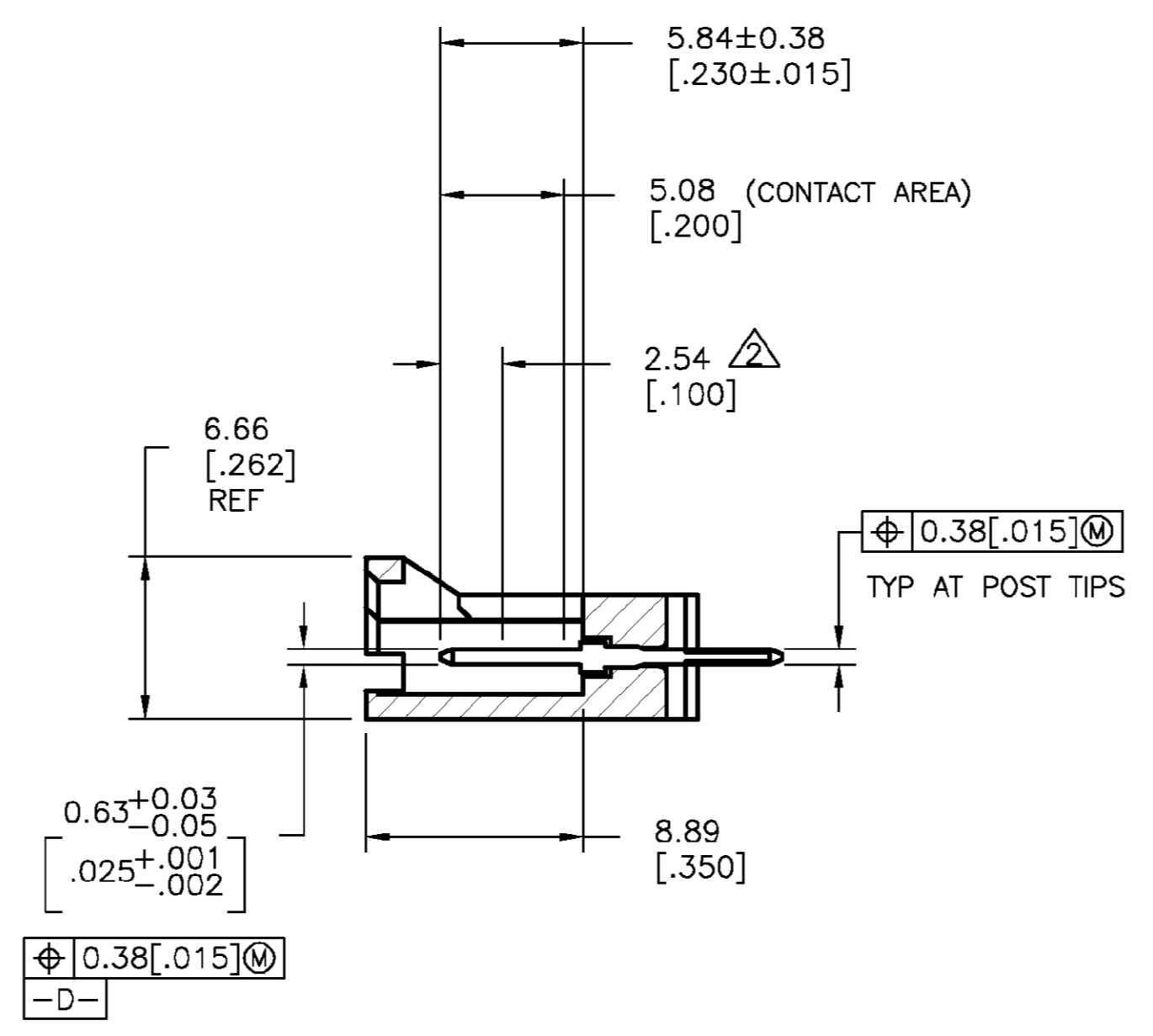
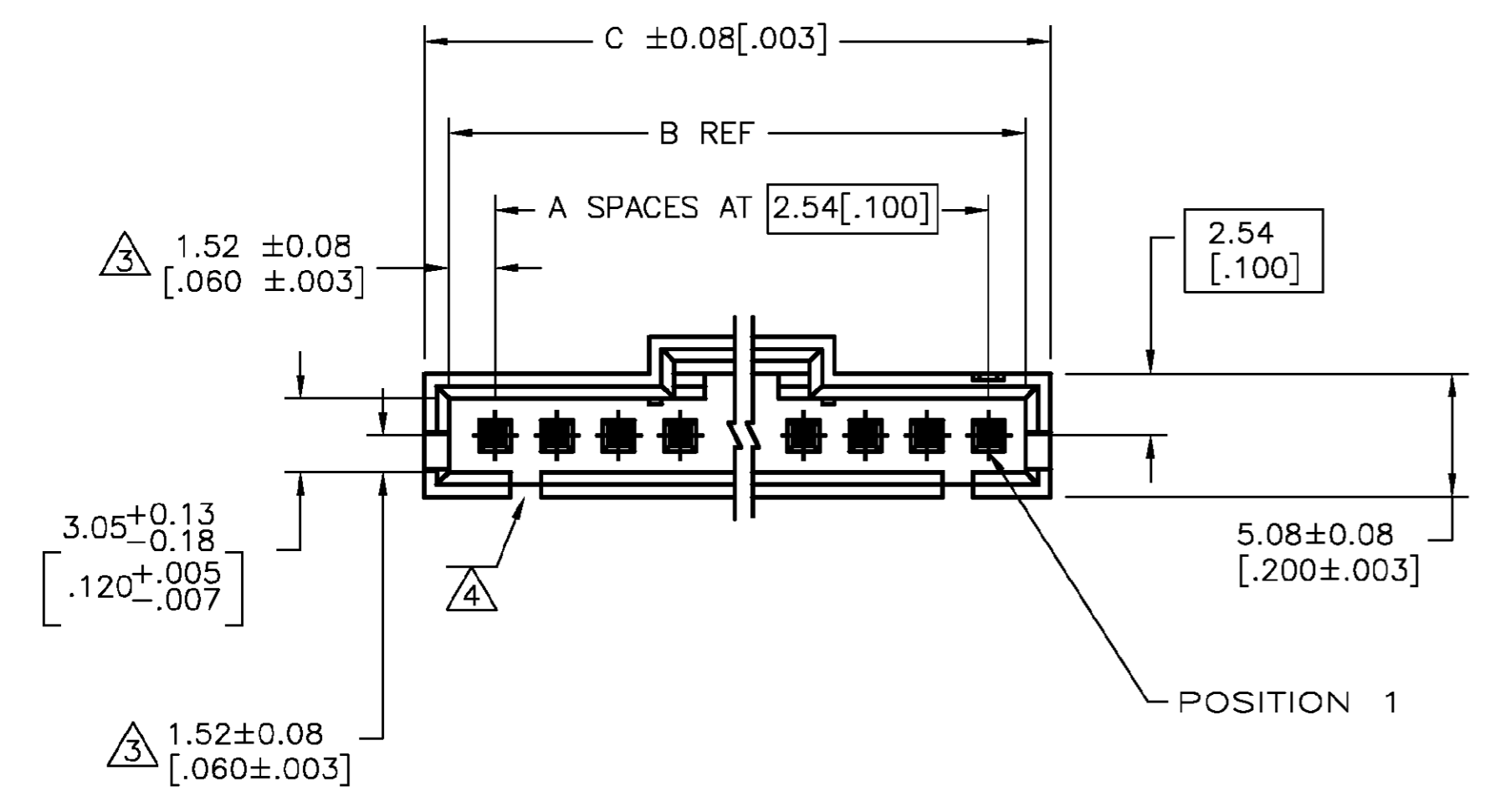


LOC		DIST		REVISIONS			
P	LR	REV	PER	DATE	OWN	APPD	
B		REV PER	OG3C-0210-02	20JUN02	RB	JG	

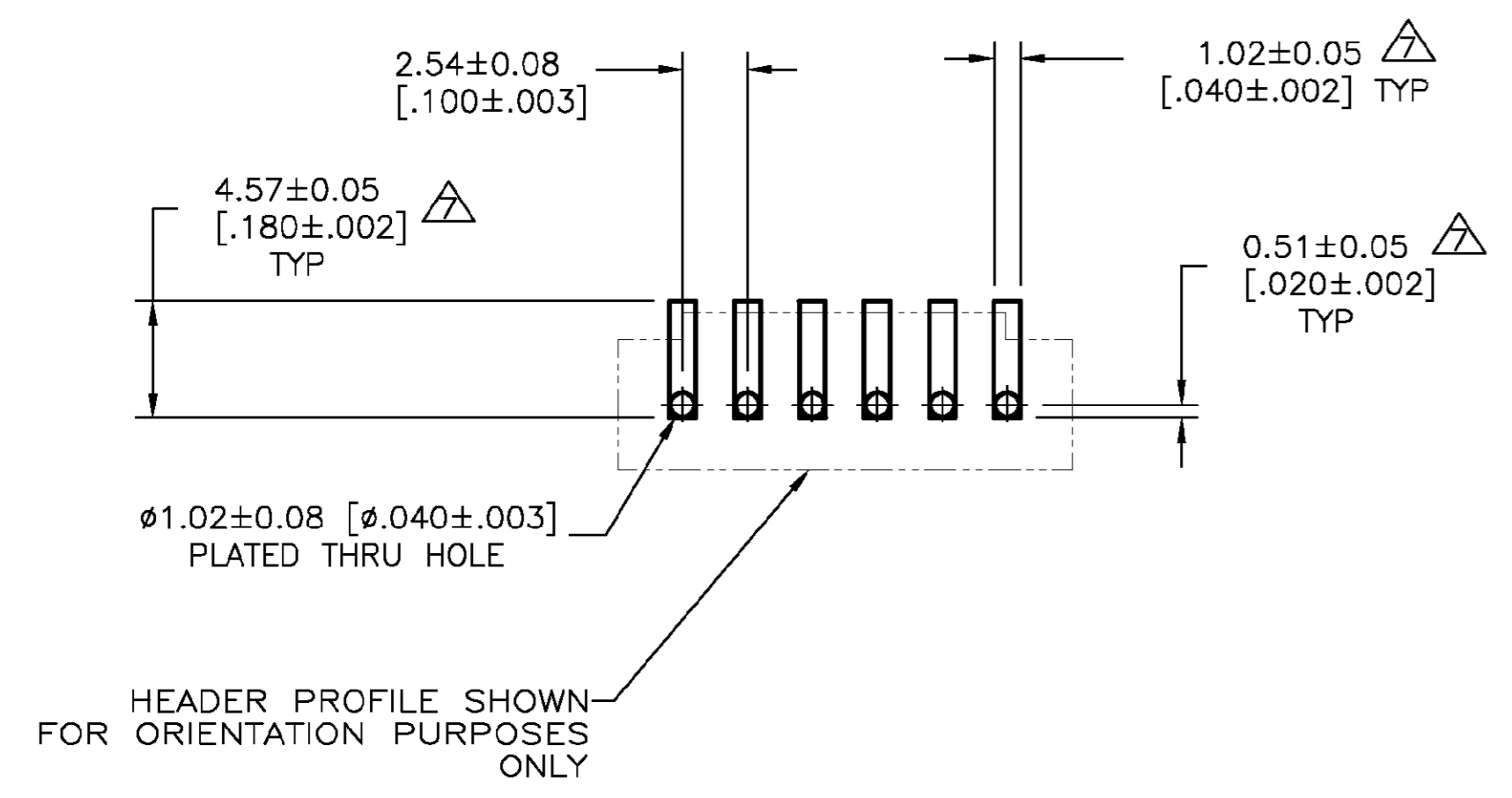


DETAIL Z
POST DETAIL TYP
2 POST MINIMUM

- ① FINISH: .00038[.000015] GOLD IN THE CONTACT AREA, .00254[.000100] MATTE TIN-LEAD ON REMAINDER OF CONTACT, ALL OVER .00127[.000050] NICKEL.
- ② POINT OF MEASUREMENT FOR PLATING THICKNESS.
- ③ THE NOTED DIMENSIONS APPLY FROM THE BASIC DIMENSION CENTER LINE (NOT THE POST CENTER LINE) TO THE SURFACE INDICATED.
- ④ ONE POLARIZATION SLOT FOR 2 POSITION ASSEMBLY ONLY.
- ⑤ SELECT POST TAILS FORMED TO PROVIDE CONNECTOR HOLD DOWN UNTIL SOLDERED, CONFIGURATION ACCEPTS 0.69[.027]-2.03[.080] THICK PRINTED CIRCUIT BOARD. (SEE DETAIL Z).



- 6. PARTS ARE PACKAGED IN GANG OF TUBES.
- ⑥ DIMENSIONS NOTED ARE FOR SOLDER STENCIL LAYOUT FOR USE WITH 1.58±0.20[.062±.008] THICK PRINTED CIRCUIT BOARDS.
- ⑦ MATERIAL- HOUSING: HIGH TEMP THERMOPLASTIC, COLOR-BLACK. POSTS: BRASS.



2	30.48 [1.200]	28.45 [1.120]	10	11	147779-1
POST NUMBER OMITTED	C	B	A	NO. OF POSN	PART NO.

THIS DRAWING IS A CONTROLLED DOCUMENT.

DRAWN BY: R BROWN	DATE: 01MAR02	Tyco Electronics Corporation Harrisburg, PA 17105-3608
CHECKED BY: J GESEFORD	DATE: 01MAR02	
APPROVED BY: J GESEFORD	DATE: 01MAR02	NAME: PLZD HDR ASSY, AMPMODU MTE, VERTICAL SINGLE ROW, 2.54[.100] CL, 0.64[.025] SQ POSTS, WITH LATCHING & HOLD DOWN, SELECT LOAD
TOLERANCES UNLESS OTHERWISE SPECIFIED:	PRODUCT SPEC:	APPLICATION SPEC:
0 PLC ± -	1 PLC ± -	2 PLC ± 0.13[.005]
3 PLC ± -	4 PLC ± -	ANGLES ± -
MATERIAL: ⑧	FINISH: ①	WEIGHT: -
CUSTOMER DRAWING		SCALE: 4:1 SHEET 1 OF 1 REV B