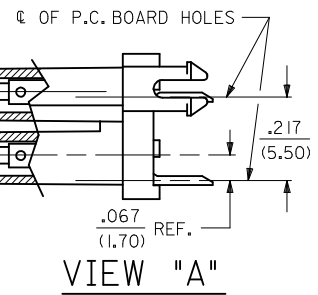


- NOTES:**
- HOUSING AND TERMINAL MATERIAL:
    - A - HOUSING : NYLON 6/6, U.L. 94V-2, COLOR NATURAL. TERMINAL: BRASS, ALLOY 260.
    - B - HOUSING : NYLON 6/6, U.L. 94V-0, COLOR NATURAL. TERMINAL: BRASS, ALLOY 260.
    - C - HOUSING : NYLON 6/6, U.L. 94V-2, COLOR NATURAL. TERMINAL: PHOS. BRONZE, ALLOY 510.
    - D - HOUSING : NYLON 6/6, U.L. 94V-0, COLOR NATURAL. TERMINAL: PHOS. BRONZE, ALLOY 510.
  - TERMINAL PLATING:
    - 1 - .000100/(.00254) MIN. BRIGHT TIN OVER .000050/(.00127) MIN. NICKEL.
    - 2 - .000030/(.00076) MIN. SELECT GOLD AND .000100/(.00254) MIN. SELECT MATTE TIN OVER .000050/(.00127) MIN. NICKEL OVERALL.
    - 3 - .000100/(.00254) MIN. MATTE TIN OVER .000050/(.00127) MIN. NICKEL.
    - 4 - .000050/(.00127) MIN. SELECT GOLD AND .000100/(.00254) MIN. SELECT MATTE TIN OVER .000050/(.00127) MIN. NICKEL OVERALL.
  - PRODUCT SPECIFICATION AND PROCESSING PARAMETERS: PS-5556-002.
  - TRAY PACK PER PK-42385-999.
  - PART MATES WITH MINI-FIT B.M.I. PLUG #42475 AND HEADERS 42404,42440,43810,43879, AND 44068
  - PHANTOM LINES INDICATE AREAS WHERE TERMINAL STANDOFFS CONTACT P.C. BOARD.
  - A MAXIMUM TOLERANCE OF .050/(1.27) ALLOWS FOR 2 POINTS OF ELECTRICAL CONTACT. A MAXIMUM TOLERANCE OF .020/(.51) ALLOWS FOR 4 POINTS OF CONTACT.
  - .016 IN/IN OR .016 MM/MM MAX. BOW ALLOWABLE AT DATUM **-C-**.
  - RIB MAY NOT BE PRESENT ON ALL PARTS.
  - DIMENSION TO BE USED FOR ALIGNMENT OF CIRCUIT #1 OF MATING CONNECTOR
  - CONNECTOR ASSEMBLIES ARE NOT TO BE MATED OR UNMATED WHILE CIRCUITS ARE LIVE.
  - PARTS NOT DESIGNED FOR CURRENT SHARING.
  - WHEN THIS PRODUCT IS USED IN A BLIND MATING APPLICATION, THE SYSTEM LEVEL DESIGN MUST INCORPORATE GUIDANCE SO THE CONNECTORS ARE WITHIN THE CAPTURE ENVELOPE (UP TO (.100/2.54) MISALIGNMENT) OF THE FLANGES ON THE HEADER OR PLUG HOUSING AND CAN THUS ALIGN THEMSELVES AS THEY COME TOGETHER. FLOAT IS ALSO REQUIRED IN THE OVERALL DESIGN. TO ALLOW THE PCB RECEPTACLE OR IT'S MATE TO MOVE INTO A STRESS-FREE POSITION AFTER MATING. IN BOARD TO BOARD APPLICATIONS, ONLY ONE HEADER IS ALLOWED PER P.C. BOARD.
  - PARTS CONFORM TO CLASS 'B' REQUIREMENTS OF COSMETIC SPECIFICATION PS-45499-002.

CIRCUIT SIZE	DIM. "A"	DIM. "B"	DIM. "C"
2	—	.21 (5.4)	.370 (9.40)
4	.165 (4.20)	.38 (9.6)	.535 (13.60)
6	.331 (8.40)	.54 (13.8)	.701 (17.80)
8	.496 (12.60)	.71 (18.0)	.866 (22.00)
10	.661 (16.80)	.87 (22.2)	1.031 (26.20)
12	.827 (21.00)	1.04 (26.4)	1.197 (30.40)
14	.992 (25.20)	1.20 (30.6)	1.362 (34.60)
16	1.157 (29.40)	1.37 (34.8)	1.528 (38.80)
18	1.323 (33.60)	1.54 (39.0)	1.693 (43.00)
20	1.488 (37.80)	1.70 (43.2)	1.858 (47.20)
22	1.654 (42.00)	1.87 (47.4)	2.024 (51.40)
24	1.819 (46.20)	2.03 (51.6)	2.189 (55.60)



**LEGEND:**

A - 42385 - \*\* \*\*

BASE NUMBER

CIRCUIT SIZE (02-24)

HOUSING AND TERMINAL MATERIAL (SEE NOTE 1.)

PLATING (SEE NOTE 2.)

4	W3
3	W
2	W1
1	W3
SHEET	REV

ADD MATTE P/N EC NO: UCP2010-0089 DRWN:JBELL CHKD:JBELL APPR:FSMITH 2009/07/16 2009/07/22 2009/07/23	QUALITY SYMBOLS ▽=0 ▽=0	GENERAL TOLERANCES (UNLESS SPECIFIED)	DIMENSION STYLE <b>IN/MM</b>	SCALE <b>1:1</b>	DESIGN UNITS <b>METRIC</b>	THIRD ANGLE PROJECTION																										
		<table border="1"> <thead> <tr> <th></th> <th>mm</th> <th>INCH</th> </tr> </thead> <tbody> <tr> <td>4 PLACES ± ---</td> <td>± ---</td> <td>± ---</td> </tr> <tr> <td>3 PLACES ± ---</td> <td>± .010</td> <td>± .010</td> </tr> <tr> <td>2 PLACES ± 0.25</td> <td>± .015</td> <td>± .015</td> </tr> <tr> <td>1 PLACE ± 0.38</td> <td>± ---</td> <td>± ---</td> </tr> </tbody> </table>		mm	INCH	4 PLACES ± ---	± ---	± ---	3 PLACES ± ---	± .010	± .010	2 PLACES ± 0.25	± .015	± .015	1 PLACE ± 0.38	± ---	± ---	<table border="1"> <thead> <tr> <th>DRAWN BY</th> <th>DATE</th> </tr> </thead> <tbody> <tr> <td>RJF</td> <td>1988/12/09</td> </tr> <tr> <th>CHECKED BY</th> <th>DATE</th> </tr> <tr> <td>JTR</td> <td>1988/12/09</td> </tr> <tr> <th>APPROVED BY</th> <th>DATE</th> </tr> <tr> <td>RAS</td> <td>1988/12/09</td> </tr> </tbody> </table>	DRAWN BY	DATE	RJF	1988/12/09	CHECKED BY	DATE	JTR	1988/12/09	APPROVED BY	DATE	RAS	1988/12/09	TITLE <b>RECEPTACLE HEADER ASSY          MINI-FIT SERIES          BLIND MATE</b>	MATERIAL NO. <b>SEE SHTS 3&amp;4</b>
	mm	INCH																														
4 PLACES ± ---	± ---	± ---																														
3 PLACES ± ---	± .010	± .010																														
2 PLACES ± 0.25	± .015	± .015																														
1 PLACE ± 0.38	± ---	± ---																														
DRAWN BY	DATE																															
RJF	1988/12/09																															
CHECKED BY	DATE																															
JTR	1988/12/09																															
APPROVED BY	DATE																															
RAS	1988/12/09																															
DRAFT WHERE APPLICABLE MUST REMAIN WITHIN DIMENSIONS		THIS DRAWING CONTAINS INFORMATION THAT IS PROPRIETARY TO MOLEX INCORPORATED AND SHOULD NOT BE USED WITHOUT WRITTEN PERMISSION																														

A		B		C		D		E		F		G		H		I		J					
PART NUMBER		ENG. NUMBER		CKT. SIZE		HSG./TERM. MATERIAL		TERMINAL PLATING		PART NUMBER		ENG. NUMBER		CKT. SIZE		HSG./TERM. MATERIAL		TERMINAL PLATING					
NO E.D.P.	A-42385-02A1	A-42385-02A1	2	94V-2/BRASS	BRIGHT TIN OVER NICKEL	NO E.D.P.	A-42385-02B1	A-42385-02B1	2	94V-0/BRASS	BRIGHT TIN OVER NICKEL	NO E.D.P.	A-42385-02B1	A-42385-02B1	2	94V-0/BRASS	BRIGHT TIN OVER NICKEL	NO E.D.P.	A-42385-02B1	A-42385-02B1	2	94V-0/BRASS	BRIGHT TIN OVER NICKEL
15-24-7040	-04A1	-04A1	4			15-24-7041	-04B1	-04B1	4			15-24-7041	-04B1	-04B1	4			15-24-7041	-04B1	-04B1	4		
15-24-7060	-06A1	-06A1	6			15-24-7061	-06B1	-06B1	6			15-24-7061	-06B1	-06B1	6			15-24-7061	-06B1	-06B1	6		
NO E.D.P.	-08A1	-08A1	8			NO E.D.P.	-08B1	-08B1	8			NO E.D.P.	-08B1	-08B1	8			NO E.D.P.	-08B1	-08B1	8		
15-24-7100	-10A1	-10A1	10			15-24-7101	-10B1	-10B1	10			15-24-7101	-10B1	-10B1	10			15-24-7101	-10B1	-10B1	10		
NO E.D.P.	-12A1	-12A1	12			NO E.D.P.	-12B1	-12B1	12			NO E.D.P.	-12B1	-12B1	12			NO E.D.P.	-12B1	-12B1	12		
15-24-7140	-14A1	-14A1	14			15-24-7141	-14B1	-14B1	14			15-24-7141	-14B1	-14B1	14			15-24-7141	-14B1	-14B1	14		
15-24-7160	-16A1	-16A1	16			15-24-7161	-16B1	-16B1	16			15-24-7161	-16B1	-16B1	16			15-24-7161	-16B1	-16B1	16		
15-24-7180	-18A1	-18A1	18			15-24-7181	-18B1	-18B1	18			15-24-7181	-18B1	-18B1	18			15-24-7181	-18B1	-18B1	18		
NO E.D.P.	-20A1	-20A1	20			NO E.D.P.	-20B1	-20B1	20			NO E.D.P.	-20B1	-20B1	20			NO E.D.P.	-20B1	-20B1	20		
NO E.D.P.	-22A1	-22A1	22			NO E.D.P.	-22B1	-22B1	22			NO E.D.P.	-22B1	-22B1	22			NO E.D.P.	-22B1	-22B1	22		
15-24-7240	A-42385-24A1	A-42385-24A1	24	94V-2/BRASS	BRIGHT TIN OVER NICKEL	15-24-7241	A-42385-24B1	A-42385-24B1	24	94V-0/BRASS	BRIGHT TIN OVER NICKEL	15-24-7241	A-42385-24B1	A-42385-24B1	24	94V-0/BRASS	BRIGHT TIN OVER NICKEL	15-24-7241	A-42385-24B1	A-42385-24B1	24	94V-0/BRASS	BRIGHT TIN OVER NICKEL
NO E.D.P.	A-42385-02A2	A-42385-02A2	2	94V-2/BRASS	30 M.I. SEL. GOLD	NO E.D.P.	A-42385-02B2	A-42385-02B2	2	94V-0/BRASS	30 M.I. SEL. GOLD	NO E.D.P.	A-42385-02B2	A-42385-02B2	2	94V-0/BRASS	30 M.I. SEL. GOLD	NO E.D.P.	A-42385-02B2	A-42385-02B2	2	94V-0/BRASS	30 M.I. SEL. GOLD
15-24-7042	-04A2	-04A2	4			15-24-7043	-04B2	-04B2	4			15-24-7043	-04B2	-04B2	4			15-24-7043	-04B2	-04B2	4		
15-24-7062	-06A2	-06A2	6			15-24-7063	-06B2	-06B2	6			15-24-7063	-06B2	-06B2	6			15-24-7063	-06B2	-06B2	6		
NO E.D.P.	-08A2	-08A2	8			NO E.D.P.	-08B2	-08B2	8			NO E.D.P.	-08B2	-08B2	8			NO E.D.P.	-08B2	-08B2	8		
15-24-7102	-10A2	-10A2	10			15-24-7103	-10B2	-10B2	10			15-24-7103	-10B2	-10B2	10			15-24-7103	-10B2	-10B2	10		
NO E.D.P.	-12A2	-12A2	12			NO E.D.P.	-12B2	-12B2	12			NO E.D.P.	-12B2	-12B2	12			NO E.D.P.	-12B2	-12B2	12		
15-24-7142	-14A2	-14A2	14			15-24-7143	-14B2	-14B2	14			15-24-7143	-14B2	-14B2	14			15-24-7143	-14B2	-14B2	14		
15-24-7162	-16A2	-16A2	16			15-24-7163	-16B2	-16B2	16			15-24-7163	-16B2	-16B2	16			15-24-7163	-16B2	-16B2	16		
15-24-7182	-18A2	-18A2	18			15-24-7183	-18B2	-18B2	18			15-24-7183	-18B2	-18B2	18			15-24-7183	-18B2	-18B2	18		
NO E.D.P.	-20A2	-20A2	20			NO E.D.P.	-20B2	-20B2	20			NO E.D.P.	-20B2	-20B2	20			NO E.D.P.	-20B2	-20B2	20		
NO E.D.P.	-22A2	-22A2	22			NO E.D.P.	-22B2	-22B2	22			NO E.D.P.	-22B2	-22B2	22			NO E.D.P.	-22B2	-22B2	22		
15-24-7242	A-42385-24A2	A-42385-24A2	24	94V-2/BRASS	30 M.I. SEL. GOLD	15-24-7243	A-42385-24B2	A-42385-24B2	24	94V-0/BRASS	30 M.I. SEL. GOLD	15-24-7243	A-42385-24B2	A-42385-24B2	24	94V-0/BRASS	30 M.I. SEL. GOLD	15-24-7243	A-42385-24B2	A-42385-24B2	24	94V-0/BRASS	30 M.I. SEL. GOLD
NO E.D.P.	A-42385-02C1	A-42385-02C1	2	94V-2/P.B.	BRIGHT TIN OVER NICKEL	NO E.D.P.	A-42385-02D1	A-42385-02D1	2	94V-0/P.B.	BRIGHT TIN OVER NICKEL	NO E.D.P.	A-42385-02D1	A-42385-02D1	2	94V-0/P.B.	BRIGHT TIN OVER NICKEL	NO E.D.P.	A-42385-02D1	A-42385-02D1	2	94V-0/P.B.	BRIGHT TIN OVER NICKEL
15-24-7044	-04C1	-04C1	4			15-24-7045	-04D1	-04D1	4			15-24-7045	-04D1	-04D1	4			15-24-7045	-04D1	-04D1	4		
15-24-7064	-06C1	-06C1	6			15-24-7065	-06D1	-06D1	6			15-24-7065	-06D1	-06D1	6			15-24-7065	-06D1	-06D1	6		
NO E.D.P.	-08C1	-08C1	8			NO E.D.P.	-08D1	-08D1	8			NO E.D.P.	-08D1	-08D1	8			NO E.D.P.	-08D1	-08D1	8		
15-24-7104	-10C1	-10C1	10			15-24-7105	-10D1	-10D1	10			15-24-7105	-10D1	-10D1	10			15-24-7105	-10D1	-10D1	10		
NO E.D.P.	-12C1	-12C1	12			NO E.D.P.	-12D1	-12D1	12			NO E.D.P.	-12D1	-12D1	12			NO E.D.P.	-12D1	-12D1	12		
15-24-7144	-14C1	-14C1	14			15-24-7145	-14D1	-14D1	14			15-24-7145	-14D1	-14D1	14			15-24-7145	-14D1	-14D1	14		
NO E.D.P.	-16C1	-16C1	16			NO E.D.P.	-16D1	-16D1	16			NO E.D.P.	-16D1	-16D1	16			NO E.D.P.	-16D1	-16D1	16		
15-24-7184	-18C1	-18C1	18			15-24-7185	-18D1	-18D1	18			15-24-7185	-18D1	-18D1	18			15-24-7185	-18D1	-18D1	18		
NO E.D.P.	-20C1	-20C1	20			NO E.D.P.	-20D1	-20D1	20			NO E.D.P.	-20D1	-20D1	20			NO E.D.P.	-20D1	-20D1	20		
NO E.D.P.	-22C1	-22C1	22			NO E.D.P.	-22D1	-22D1	22			NO E.D.P.	-22D1	-22D1	22			NO E.D.P.	-22D1	-22D1	22		
15-24-7244	A-42385-24C1	A-42385-24C1	24	94V-2/P.B.	BRIGHT TIN OVER NICKEL	15-24-7245	A-42385-24D1	A-42385-24D1	24	94V-0/P.B.	BRIGHT TIN OVER NICKEL	15-24-7245	A-42385-24D1	A-42385-24D1	24	94V-0/P.B.	BRIGHT TIN OVER NICKEL	15-24-7245	A-42385-24D1	A-42385-24D1	24	94V-0/P.B.	BRIGHT TIN OVER NICKEL
NO E.D.P.	A-42385-02C2	A-42385-02C2	2	94V-2/P.B.	30 M.I. SEL. GOLD	NO E.D.P.	A-42385-02D2	A-42385-02D2	2	94V-0/P.B.	30 M.I. SEL. GOLD	NO E.D.P.	A-42385-02D2	A-42385-02D2	2	94V-0/P.B.	30 M.I. SEL. GOLD	NO E.D.P.	A-42385-02D2	A-42385-02D2	2	94V-0/P.B.	30 M.I. SEL. GOLD
NO E.D.P.	-04C2	-04C2	4			NO E.D.P.	-04D2	-04D2	4			NO E.D.P.	-04D2	-04D2	4			NO E.D.P.	-04D2	-04D2	4		
NO E.D.P.	-06C2	-06C2	6			NO E.D.P.	-06D2	-06D2	6			NO E.D.P.	-06D2	-06D2	6			NO E.D.P.	-06D2	-06D2	6		
NO E.D.P.	-08C2	-08C2	8			NO E.D.P.	-08D2	-08D2	8			NO E.D.P.	-08D2	-08D2	8			NO E.D.P.	-08D2	-08D2	8		
NO E.D.P.	-10C2	-10C2	10			NO E.D.P.	-10D2	-10D2	10			NO E.D.P.	-10D2	-10D2	10			NO E.D.P.	-10D2	-10D2	10		
NO E.D.P.	-12C2	-12C2	12			NO E.D.P.	-12D2	-12D2	12			NO E.D.P.	-12D2	-12D2	12			NO E.D.P.	-12D2	-12D2	12		
NO E.D.P.	-14C2	-14C2	14			NO E.D.P.	-14D2	-14D2	14			NO E.D.P.	-14D2	-14D2	14			NO E.D.P.	-14D2	-14D2	14		
NO E.D.P.	-16C2	-16C2	16			NO E.D.P.	-16D2	-16D2	16			NO E.D.P.	-16D2	-16D2	16			NO E.D.P.	-16D2	-16D2	16		
NO E.D.P.	-18C2	-18C2	18			15-24-7187	-18D2	-18D2	18			15-24-7187	-18D2	-18D2	18			15-24-7187	-18D2	-18D2	18		
NO E.D.P.	-20C2	-20C2	20			NO E.D.P.	-20D2	-20D2	20			NO E.D.P.	-20D2	-20D2	20			NO E.D.P.	-20D2	-20D2	20		
NO E.D.P.	-22C2	-22C2	22			NO E.D.P.	-22D2	-22D2	22			NO E.D.P.	-22D2	-22D2	22			NO E.D.P.	-22D2	-22D2	22		
NO E.D.P.	A-42385-24C2	A-42385-24C2	24	94V-2/P.B.	30 M.I. SEL. GOLD	15-24-7247	A-42385-24D2	A-42385-24D2	24	94V-0/P.B.	30 M.I. SEL. GOLD	15-24-7247	A-42385-24D2	A-42385-24D2	24	94V-0/P.B.	30 M.I. SEL. GOLD	15-24-7247	A-42385-24D2	A-42385-24D2	24	94V-0/P.B.	30 M.I. SEL. GOLD

DIMENSIONS SHOWN (METRIC) UNLESS OTHERWISE SPECIFIED TOLERANCES: ANGULAR ± 1/2°  
 3 PLACE ± --- --- ---  
 2 PLACE ± --- ± ---  
 1 PLACE --- --- ---  
 DRAFT WHERE APPLICABLE MUST REMAIN WITHIN DIMENSIONS  
 DRWG. BY: RJF CHK'D. BY: JTR  
 APP'D. BY: RAS SCALE:

REVISIONS LTR. REVISIONS LTR.

TITLE: RECEPTACLE HEADER ASSEMBLIES (MINI-FIT B.M.I. SERIES)  
 MOLEX INCORPORATED U.S.A.  
 SHEET NO. 3 DATE 12 / 9 / 88  
 PART NO. SDA-42385-  
 DRWG. NO.

THIS DRAWING CONTAINS INFORMATION THAT IS PROPRIETARY TO MOLEX INC. AND SHOULD NOT BE USED WITHOUT WRITTEN PERMISSION.

42385

CO C

