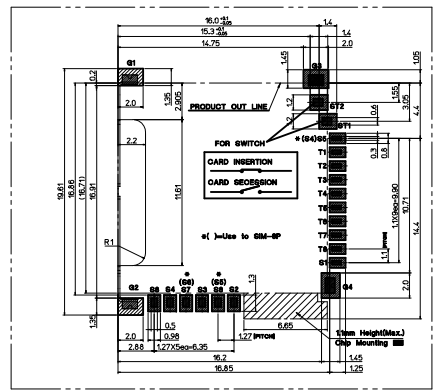
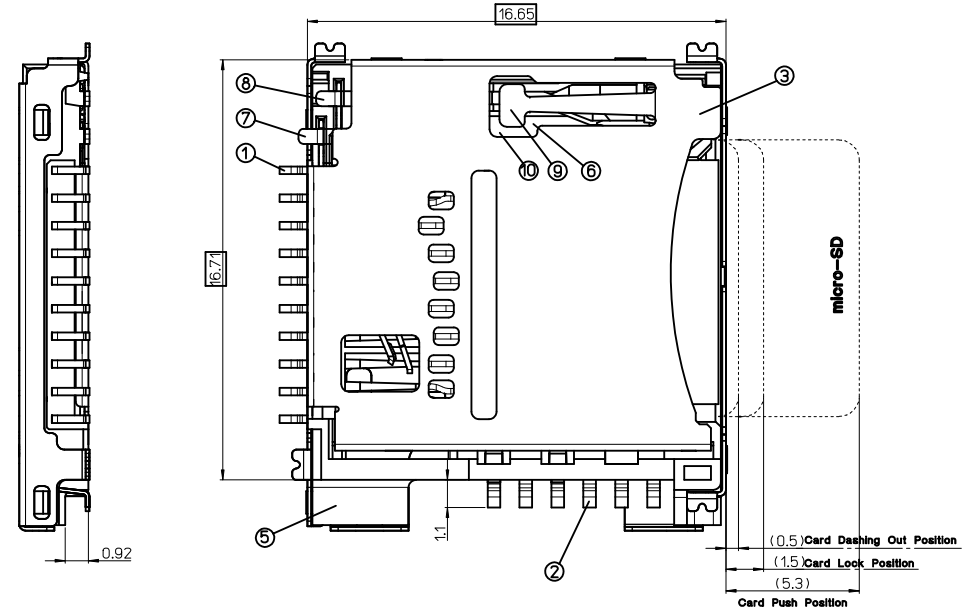
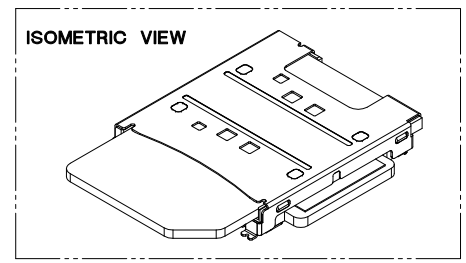


NOTES

1. MATERIALS : SEE TABLE 1
2. FINISHES : SEE TABLE 2
3. COPLANARITY OF SOLDER TAILS : 0.1 mm MAX.
MISALIGNMENT OF SOLDER TAIL FROM "Z"
UPPER DIRECTION 0.05 MAX., LOWER DIRECTION 0.1MAX.



RECOMMENDED PCB PATTERN LAYOUT
TOLERANCE : ±0.05

*** TABLE 1**

8P/8P	496191611	49619-1611
mSD/SIM	MATERIAL NO.	ORDER NO.

REVISED EC NO: KOR2011-0060 DRWN: IHYOU CHKD: YSOOKIM APPR: YUNS.IKKIM	DESCRIPTION 2011/06/24 2011/06/24	QUALITY SYMBOLS	GENERAL TOLERANCES (UNLESS SPECIFIED)	DIMENSION STYLE	SCALE	DESIGN UNITS	THIRD ANGLE PROJECTION
		$\nabla = 0$ $\triangle = 0$	mm INCH 4 PLACES ± --- ± --- 3 PLACES ± --- ± --- 2 PLACES ± 0.1 ± --- 1 PLACE ± 0.15 ± --- ANGULAR ± 1°	MM ONLY	5:1	METRIC	
			DRAFT WHERE APPLICABLE MUST REMAIN WITHIN DIMENSIONS	DRAWN BY: SH.CHU CHECKED BY: APPROVED BY: SJ.SEH MATERIAL NO.	DATE: 2007.05.31 DATE: DATE: 2007.05.31	TITLE: MICROSD/SIM COMBO SOCKET RIGHT ENTRY TYPE MOLEX INCORPORATED DOCUMENT NO. SD-49619-001	
			SIZE: A3	THIS DRAWING CONTAINS INFORMATION THAT IS PROPRIETARY TO MOLEX INCORPORATED AND SHOULD NOT BE USED WITHOUT WRITTEN PERMISSION		SHEET NO. 1 OF 3	

* TABLE 2 : PARTS-LIST

NO.	DESCRIPTION	ENGINEERING NO.	MATERIALS	FINISHES
1	m-SD CONTACT TERMINAL	49932-8131	PHOS.-BRONZE	Selective-Au over Ni
2	SIM CONTACT TERMINAL	104402-8003	Ⓢ COPPER-ALLOY	Selective-Au over Ni
3	m-SD METAL SHELL	49933-5103	STAINLESS STEEL	Ni OVERALL
4	SIM METAL SHELL	49873-5003	STAINLESS STEEL	Ni OVERALL
5	HOUSING	49619-1691	LIQUID CRYSTAL POLYMER	UL94V-0
6	HEART CAM	49620-0001	LIQUID CRYSTAL POLYMER	UL94V-0
7	SWITCH TERMINAL 1	49820-8031	PHOS.-BRONZE	Selective-Au over Ni
8	SWITCH TERMINAL 2	49821-8031	PHOS.-BRONZE	Selective-Au over Ni
9	PIN ROD	49225-9002	STAINLESS STEEL	
10	SPRING	49362-9001	STAINLESS STEEL	

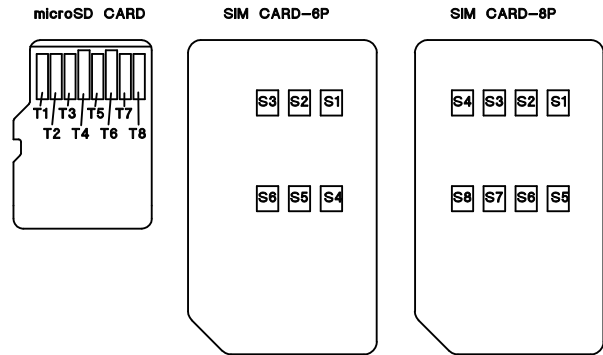
* TABLE 3 : REFERENCE

[SIM CARD 6P-PIN-MAP]

PIN NUMBER	DESCRIPTION
S1	Vcc(Voltage)
S2	Vcc(Reset)
S3	CLK
S4	GND
S5	Vpp
S6	I/O

[microSD CARD PIN-MAP]

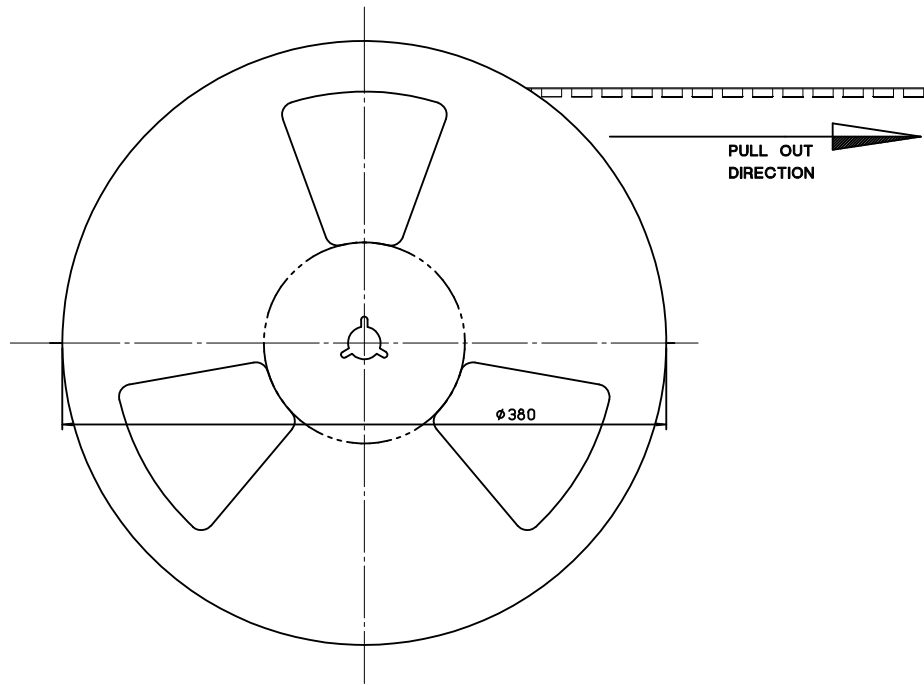
PIN NUMBER	DESCRIPTION
T1	DAT2
T2	CD/DAT3 ²
T3	CMD
T4	V _{DD}
T5	CLK
T6	V _{SS} ²
T7	DAT0
T8	DAT1



[SIM CARD 8P-PIN-MAP]

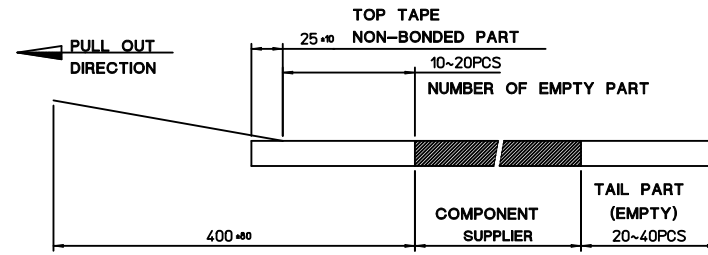
PIN NUMBER	DESCRIPTION
S1	Vcc(Voltage)
S2	Vcc(Reset)
S3	CLK
S4	Reserved
S5	GND
S6	Vpp
S7	I/O
S8	Reserved

REVISED IEC NO: KOR2011-0060 DRWN:HYOU 2011/06/24 CHKD:YSOOKIM APPR:YUNSIKKIM 2011/06/24 REV DESCRIPTION	QUALITY SYMBOLS	GENERAL TOLERANCES (UNLESS SPECIFIED)	DIMENSION STYLE	SCALE	DESIGN UNITS	THIRD ANGLE PROJECTION	
	▽=0 ◻=0	mm INCH 4 PLACES ± --- ± --- 3 PLACES ± --- ± --- 2 PLACES ± 0.1 ± --- 1 PLACE ± 0.15 ± --- ANGULAR ± 1°	MM ONLY	5:1	METRIC		
		DRAFT WHERE APPLICABLE MUST REMAIN WITHIN DIMENSIONS	DRAWN BY SH. CHU CHECKED BY APPROVED BY SJ. SEH MATERIAL NO. SEE TABLE	DATE 2007.05.31 DATE DATE 2007.05.31	TITLE MICROSD/SIM COMBO SOCKET RIGHT ENTRY TYPE MOLEX MOLEX INCORPORATED DOCUMENT NO. SD-49619-001		
			SIZE A3	SHEET NO. 2 OF 3 THIS DRAWING CONTAINS INFORMATION THAT IS PROPRIETARY TO MOLEX INCORPORATED AND SHOULD NOT BE USED WITHOUT WRITTEN PERMISSION			

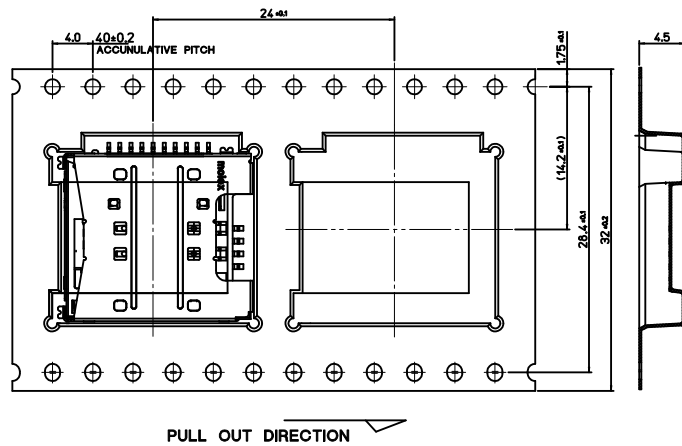
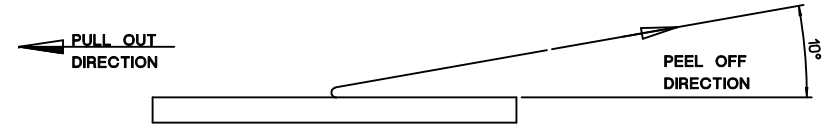


NOTES

- 1. QUANTITY OF CONNECTORS : 850PCS/REEL
- 2. LEAD LENGTH



- 3. PEELING OFF FORCE OF COVER TAPE : 0.1N~0.59N(10.2GF~80GF)
- (PEELING DIRECTION AS SHOW IN FOLLOW FIG.)
- PEELING OFF SPEED : 300mm/Min.(Ref.)



35902-0011	35908-1003	49619-9901	49619-1411	496191411	49619-1411	8P/6P
35902-0011	35908-1003	49619-9901	49619-1611	496191611	49619-1611	8P/8P
COVER TAPE	REEL	EMBOSSD TAPE	CONNECTOR	MATERIAL NO.	ENG. NO.	CKTS

REVISED EC NO: KOR2011-0060 DRWN:HYOU 2011/06/24 CHKD:YSOOKIM APPR:YUNSIKKIM 2011/06/24	QUALITY SYMBOLS	GENERAL TOLERANCES (UNLESS SPECIFIED)	DIMENSION STYLE	SCALE	DESIGN UNITS	THIRD ANGLE PROJECTION															
	$\nabla = 0$ $\triangle = 0$	<table border="1"> <tr><th></th><th>mm</th><th>INCH</th></tr> <tr><td>4 PLACES</td><td>± ---</td><td>± ---</td></tr> <tr><td>3 PLACES</td><td>± ---</td><td>± ---</td></tr> <tr><td>2 PLACES</td><td>± 0.1</td><td>± ---</td></tr> <tr><td>1 PLACE</td><td>± 0.15</td><td>± ---</td></tr> </table>		mm	INCH	4 PLACES	± ---	± ---	3 PLACES	± ---	± ---	2 PLACES	± 0.1	± ---	1 PLACE	± 0.15	± ---	MM ONLY	5:1	METRIC	
		mm	INCH																		
	4 PLACES	± ---	± ---																		
3 PLACES	± ---	± ---																			
2 PLACES	± 0.1	± ---																			
1 PLACE	± 0.15	± ---																			
DESCRIPTION	ANGULAR ± 1 °	DRAWN BY	DATE	TITLE	MICROSD/SIM COMBO SOCKET RIGHT ENTRY TYPE																
REV	DRAFT WHERE APPLICABLE MUST REMAIN WITHIN DIMENSIONS	SH. CHU	2007.05.31	MOLEX INCORPORATED																	
		CHECKED BY	DATE	DOCUMENT NO.	SHEET NO.																
		APPROVED BY	DATE	SD-49619-001	3 OF 3																
		MATERIAL NO.	DATE	THIS DRAWING CONTAINS INFORMATION THAT IS PROPRIETARY TO MOLEX INCORPORATED AND SHOULD NOT BE USED WITHOUT WRITTEN PERMISSION																	
		SEE TABLE	2007.05.31																		