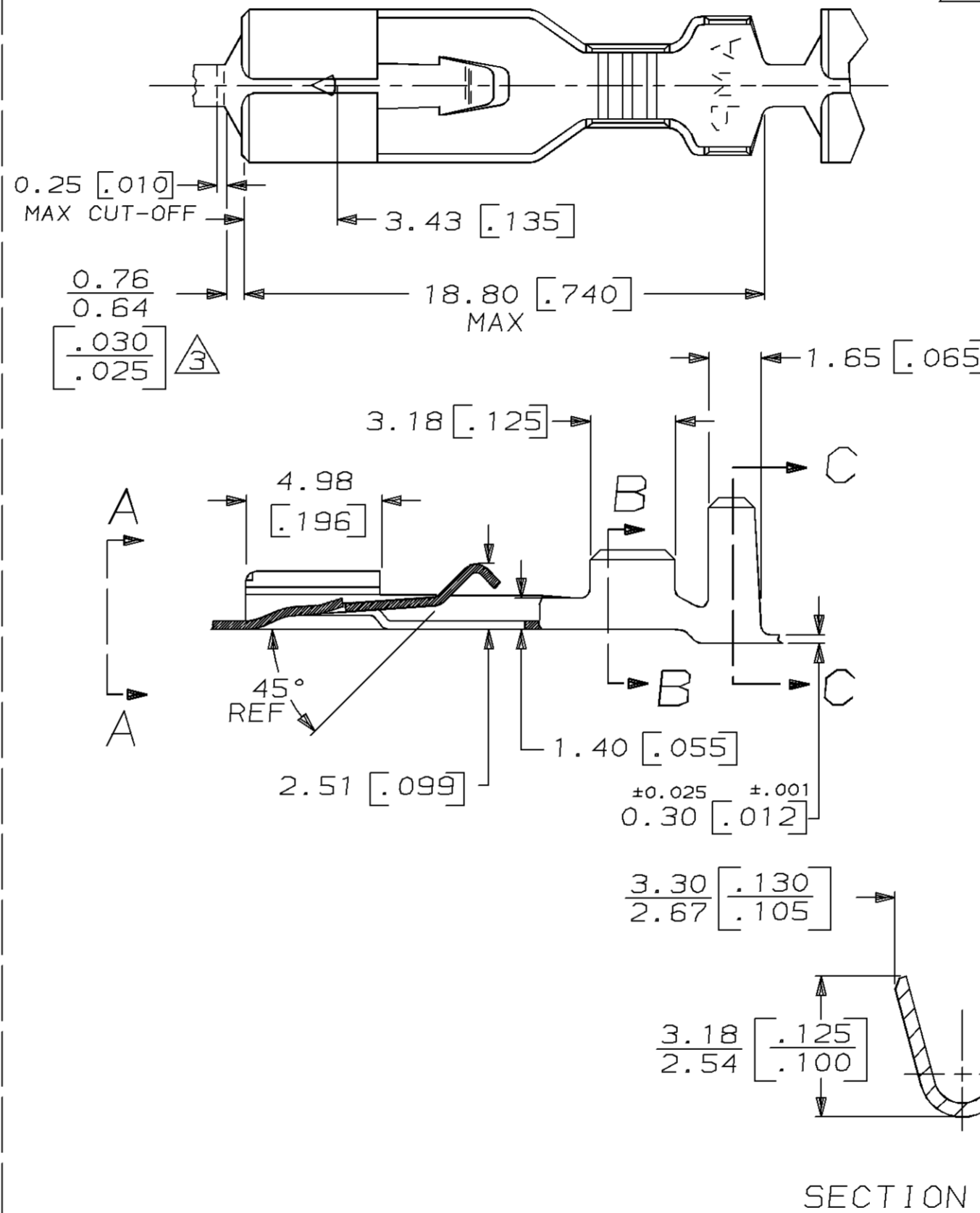
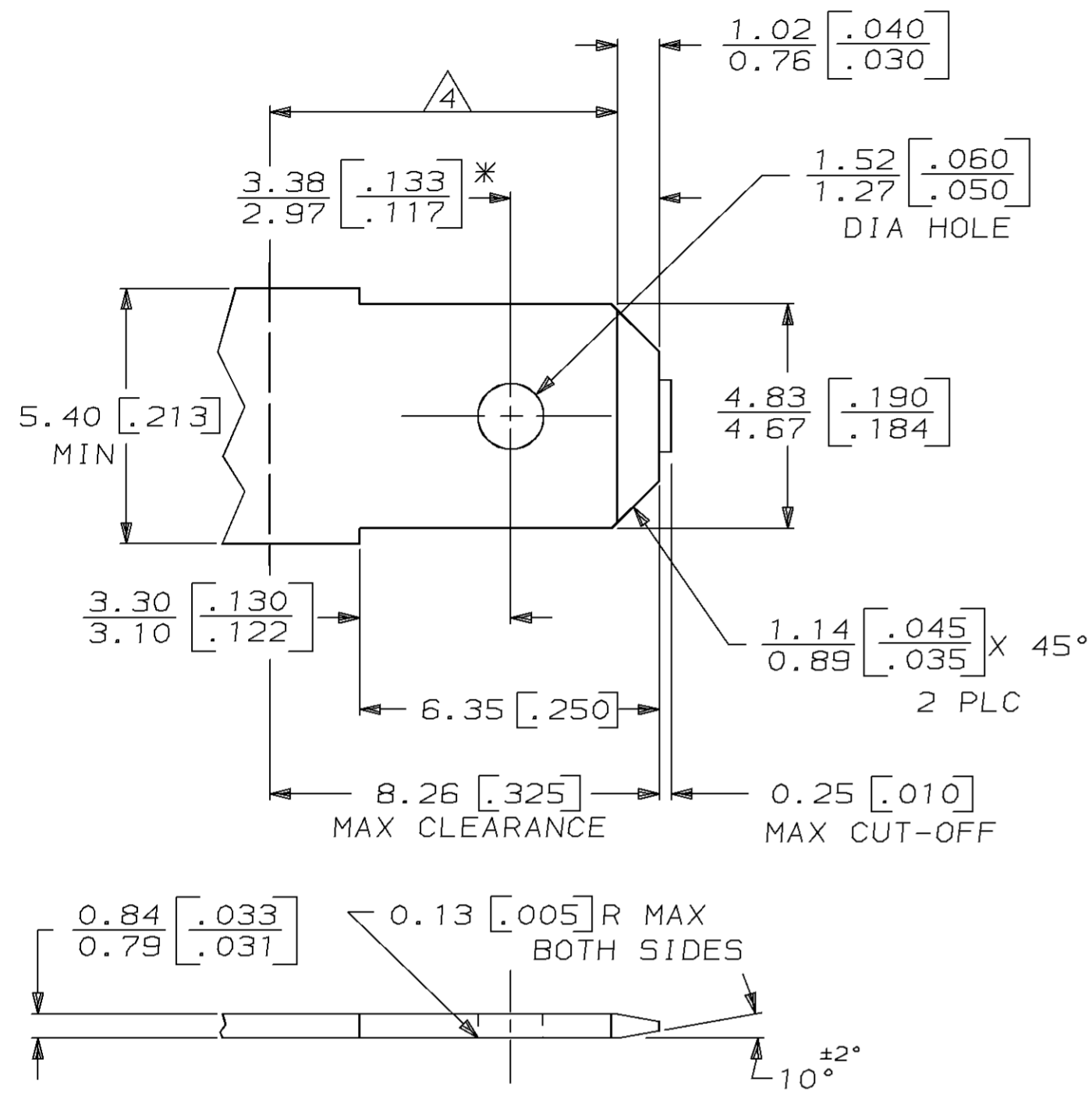
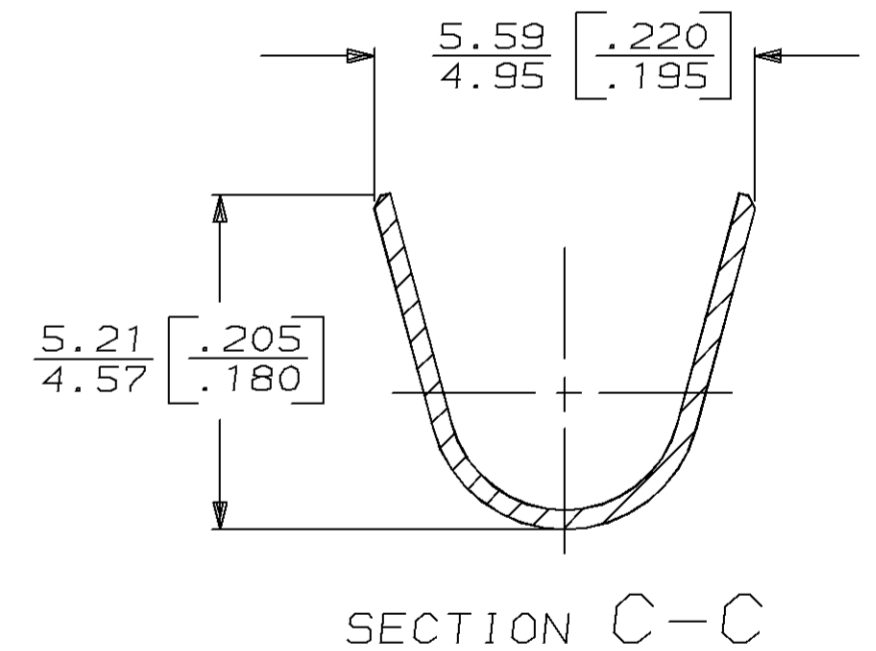
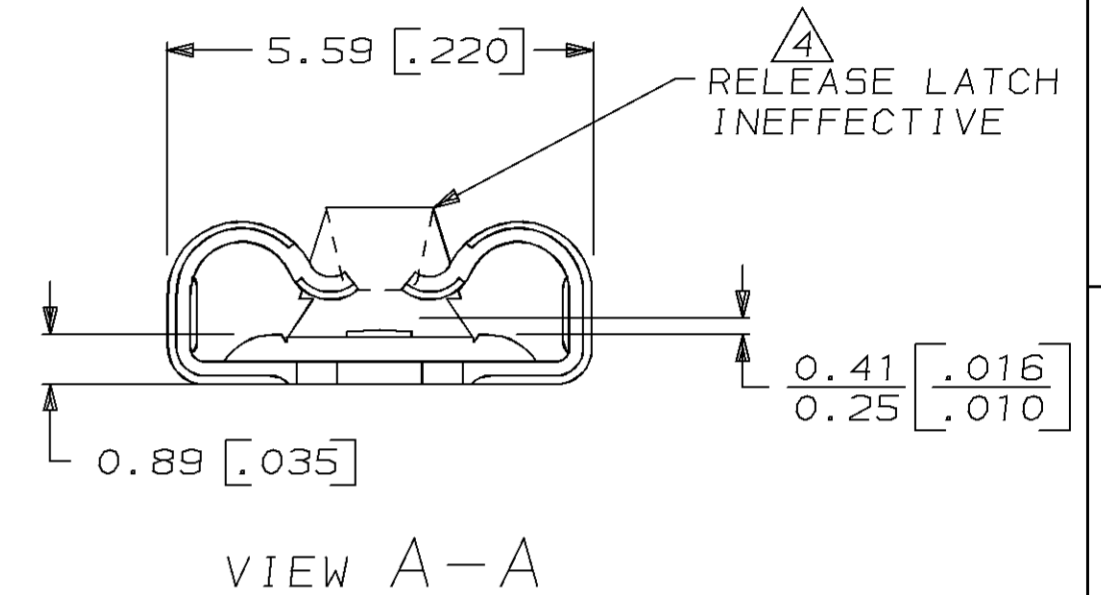


LOC	DIST	P	F	ZONE	LTR	REVISIONS	DATE	APPROVED
AF	50				A	REV PER 0710-0011-96	4/25/96	JR/JG

SUGGESTED MATING TAB



- 1 DIMENSIONS IN BRACKETS ARE IN INCHES.
- 2 CONTINUOUS STRIP ON REELS.
- 3 THIS DIMENSIONS MUST BE MAINTAINED FOR PROPER FUNCTION OF THE LATCHING MECHANISM.
- 4 LEVER MAY NOT UNLOCK MATING TAB.



- 1 MATL: #2 HARD BRASS OR NICKEL PLATED STEEL.
- 2 NO BURRS PERMISSIBLE AT HOLE.
- 3 TIN PLATING IS REQUIRED ON BRASS WHEN TERMINAL TEMPERATURE IS OVER 225°F.
- 4 MUST BE FLAT WITHIN 0.076 [.003] OVER THIS LENGTH.
- 5 HOLE MUST BE SYMMETRICAL ABOUT TAB ϕ WITHIN 0.076 [.003].
- * TO BE USED ONLY WHEN SHOULDER IS ELIMINATED.

METRIC

2.29 - 3.30 [.090 - .130]	0.5 - 1.4mm ² [20-16]	63520-1
INSULATION RANGE	WIRE SIZE	PART NO
UNLESS OTHERWISE SPECIFIED DIMENSIONS ARE IN MM TOLERANCES ON:	DR 3/27/90 JR RUTH	AMP AMP INCORPORATED Harrisburg, Pa. 17105
2 PL DEC ± -	CHK 3/27/90 G YETTER	
3 PL DEC ± 0.25 [.010]	APPD 3/27/90 J GILLESPIE	NAME RECEPTACLE, POSITIVE LOCK, .187 SERIES
MATERIAL #6H BRASS	APPD 3/27/90 R KUZO	SIZE C
FINISH TIN 0.002032 [.000080] MIN	PRODUCT SPEC -	FSCM NO 00779
	APPLICATION SPEC -	DRAWING NO 63520
	WEIGHT -	SCALE 5:1
		SHEET 1 OF 1