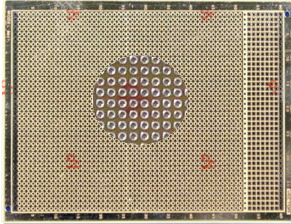




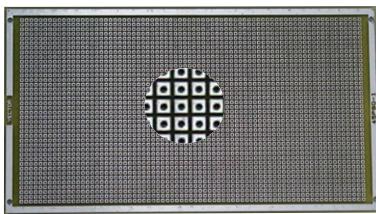
ELECTRONICS & TECHNOLOGY, INC.

# Vectorbord® Plugbord™

## Square Pads-Per-Hole with 0.042" Holes, .100" Grid



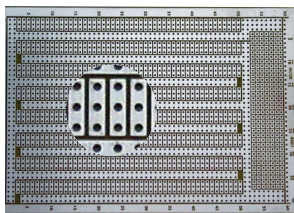
**8007 4.50"Hx6.50"L x .062" TH**  
 0.100" grid square Pad-Per-Hole Pattern on component side - overall Ground Plane pattern on wiring side .042" holes not plated thru with .085" square isolated solder pads  
 I/O area w/square solder pads for mounting connector  
 16-Pin DIP= 60  
 Material: CEM-1  
 WW Terminals: T44, T46, T49, T68  
 Solder Terminals: T42-1  
 WW Socket Pin: R32



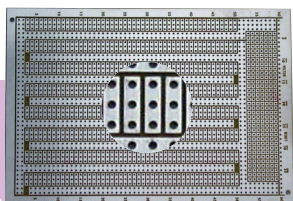
**45P80-1 4.5"Hx8.08"L x .062" TH**  
 0.100" square Pad-Per-Hole Pattern - peripheral Ground Plane pattern on both sides. Top/bottom rows on .200 pitch with no plating.  
 0.042" holes not plated-thru. 0.085" square isolated solder pads on both sides.  
 16-Pin DIP capacity = 80  
 Material: FR-4  
 WW Terminals: T44, T46, T49, T68  
 Solder Terminals: T42-1  
 WW Socket Pin: R32

**45P80-2 4.5"Hx8.08"L x .062" TH**  
 Same as above but holes plated-thru

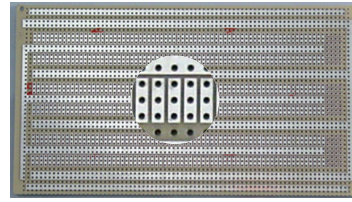
## Three-Hole Solder Pads with 0.042" Holes, .100" Grid



**8001 4.50"Hx6.50"L x .062" TH**  
 0.100" grid 3-Hole Solder Pad on wiring side only Single-sided with no etch & plating on reverse side .042" holes not plated thru  
 0.28" x .080" solder pads  
 I/O area w/square solder pads for mounting connector  
 16-Pin DIP= 20  
 Material: CEM-1  
 WW Terminals: T44, T46, T49, T68  
 Solder Terminals: T42-1, K24C, K31C  
 WW Socket Pin: R32



**8023 4.5"Hx6.5"L x .062" TH**  
 0.100" grid, 3-hole Pads Pattern on both sides. 0.042" plated-thru holes. I/O area with square connector mounting.  
 Solder coated pattern.  
 Material: FR-4  
 WW Terminals: T44, T46, T49, T68  
 Solder Terminals: T42-1  
 WW Socket Pin: R32



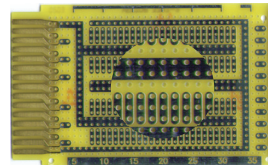
**3677-6 4.50"Hx8.08"L x .062" TH**  
 0.100" grid 3-Hole Solder Pad on wiring side only. Single-sided with no etch & plating on reverse side  
 .042" holes not plated thru  
 0.28" x .080" solder pads  
 16-Pin DIP= 21  
 Material: CEM-1  
 WW Terminals: T44, T46, T49, T68  
 Solder Terminals: T42-1  
 WW Socket Pin: R32

Vectorbord® Plugbord™ is designed for plug-in applications. Many feature gold-plated contacts for edge connectors, mounting for 96 or 160-pin DIN connectors, or 2MM Hard Metric (P1/P2) connector on metric pitch boards. Plugbord™ also offers different basic circuit patterns for solder or wire-wrap connections. All bus and circuit patterns are solder coated for user convenience (except P/N 8020).

Selection of mating edge connectors and DIN connectors located on pages 66-69.

## 30 CONTACTS

**3797-2 2.73"H X 4.5"L X .062"TH**



0.100" grid 3-Hole Solder Pad on one side only.  
 .042" diameter holes not plated-thru.  
 30 gold-plated contacts (15 each side) on .156" centers.  
 16-pin DIP Capacity = 4  
 WW Terminals: T44, T46, T49, T68.  
 Socket pin: R32  
 Solder Connector: R630.  
 Card Cage: CCK 12  
 Material: FR-4

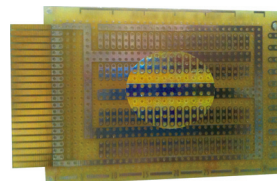
**3797 2.73"H X 4.5"L X .062"TH**



0.100" grid. Gold-plated edge contacts only  
 .042" diameter holes not plated-thru.  
 30 gold-plated contacts (15 each side) on .156" centers.  
 16-pin DIP Capacity = 15  
 WW Terminals: T44, T46, T49, T68.  
 Socket pin: R32  
 Solder Connector: R630.  
 Card Cage: CCK 12  
 Material: FR-4

## 44 CONTACTS

**3795-1 2.73"H X 4.5"L X .062"TH**



0.100" grid 3-Hole Solder Pad on one side only.  
 .042" diameter holes  
 44 gold-plated contacts (22 each side) on .100" centers.  
 16-pin DIP Capacity = 4  
 WW Terminals: T44, T46, T49, T68.  
 Socket pin: R32  
 Wire-Wrap Connector: R644-2  
 Card Cage: CCK 12  
 Material: FR-4

Circleboard  
Plugboard