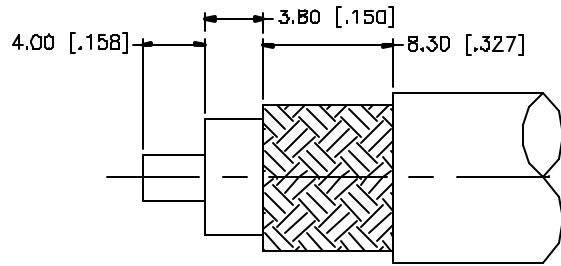
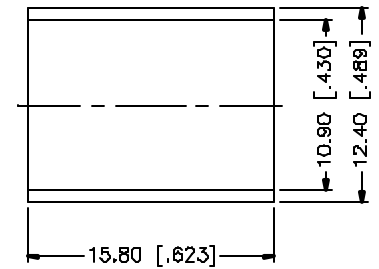
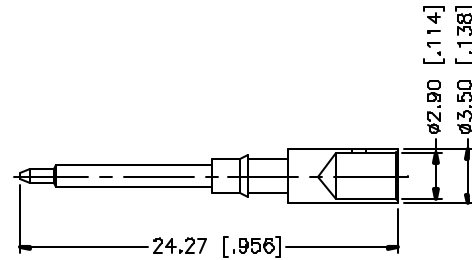
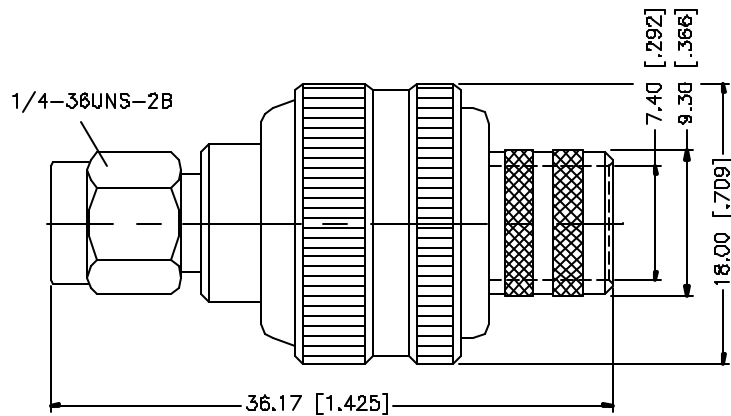


REV.	DATE	DESCRIPTION
NC	D1/29/01	INITIAL RELEASE
A	05/01/04	UPDATE DRAWING FORMAT



RECOMMENDED
CABLE STRIPPING DIM'S



NOTES:

1. CRIMPED FERRULE
HEX CRIMP SIZE .429"
2. CRIMPED CONTACT PIN
HEX CRIMP SIZE .118"

8				<small>UNLESS OTHERWISE SPECIFIED DIMENSIONS ARE IN MILLIMETERS DIMENSIONS IN [] ARE IN INCHES AND FOR CUSTOMER REFERENCE ONLY.</small> <small>UNLESS OTHERWISE SPECIFIED TOLERANCES FOR MILLIMETERS ARE:</small> D, S - 8mm ± 0.20mm B - 30mm ± 0.40mm 30 - 120mm ± 0.50mm <small>UNLESS OTHERWISE SPECIFIED TOLERANCES FOR INCHES ARE:</small> .020 - .315 = ± 0.007" .315 - 1.180 = ± 0.015" 1.180 - 4.724 = ± 0.020" DO NOT SCALE DRAWING	APPROVALS	DATE	<h1 style="color: blue; text-align: center;">Amphenol Connex</h1>		
7			DRAWN		G.R.S.	05/01/04			
6			CHECKED						
5			ISSUED						
4	FERRULE	COPPER	GOLD		1				
3	CONTACT PIN	BRASS	GOLD	1		PART DESCRIPTION SMA CRIMP PLUG (FOR BELDEN 9913, 9914, LMR-400)			
2	INSULATOR	TEFLON	NATURAL	1		PART NO. 132298			
1	HOUSING/BODY	BRASS	GOLD	1		DWC NO. 132298.DWG			
	DESCRIPTION	MATERIAL	FINISH	QTY	CAD FILE		REV. A	SIZE A	SCALE NA