



SAW Components

Data Sheet B7720





SAW Components

B7720

Low-Loss Filter for Mobile Communication

1960,0 MHz

Data Sheet



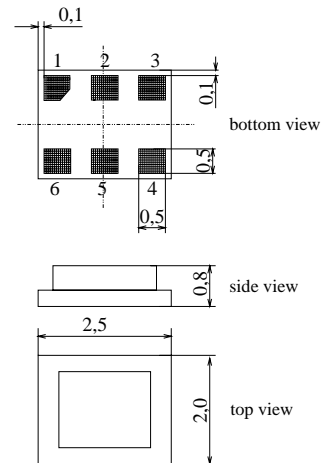
Chip Sized SAW Package DCS6I

Features

- Low-loss RF filter for mobile telephone PCS systems, receive path
- High selectivity
- Low amplitude ripple
- Usable passband 60 MHz
- Unbalanced to balanced operation
- No external matching required
- Package for **Surface Mounted Technology (SMT)**

Terminals

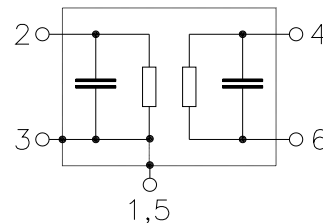
- Gold-plated Ni



Dimensions in mm, approx. weight 0,014 g

Pin configuration

- 2 Input
- 4, 6 Balanced output
- 1, 3, 5 To be grounded



Type	Ordering code	Marking and Package according to	Packing according to
B7720	B39202-B7720-C610	C61157-A7-A76	F61074-V8112-Z000

Electrostatic Sensitive Device (ESD)

Maximum ratings

Operable temperature range	T	- 40 / + 85	°C	
Storage temperature range	T_{stg}	- 40 / + 85	°C	
DC voltage	V_{DC}	5	V	
ESD voltage	V_{ESD}	50	V	
Input power at				peak power of GSM signal, duty cycle 4:8 duty cycle 4:8 duty cycle 2:8
GSM850, GSM900	P_{IN}	15	dBm	
GSM1800, GSM1900	P_{IN}	12	dBm	
GSM1800, GSM1900	P_{IN}	13	dBm	
Tx bands				



SAW Components

B7720

Low-Loss Filter for Mobile Communication

1960,0 MHz

Data Sheet



Characteristics

Operating Temperature Range: $T = +25 \pm 2^\circ\text{C}$
 Terminating source impedance: $Z_S = 50 \Omega$ (unbalanced)
 Terminating load impedance: $Z_L = 50 \Omega$ (balanced)

		min.	typ.	max.	
Center frequency	f_C	—	1960,0	—	MHz
Maximum insertion attenuation	α_{\max}	—	2,7	3,1*	dB
	1930,0 ... 1990,0 MHz				
Amplitude ripple (p-p)	$\Delta\alpha$	—	0,9	1,5	dB
	1930,0 ... 1990,0 MHz				
Input VSWR		—	1,8	2,0	
	1930,0 ... 1990,0 MHz				
Output VSWR		—	1,8	2,0	
	1930,0 ... 1990,0 MHz				
Output phase balance ($\phi(S_{31}) - \phi(S_{21}) + 180^\circ$)		-15	—	17	°
	1930,0 ... 1990,0 MHz				
Output amplitude balance (S_{31}/S_{21})		-3,0	—	3,0	dB
	1930,0 ... 1990,0 MHz				
Differential to common mode suppression	S_{sc12}				
	855,0 ... 995,0 MHz	22,0	29,0	—	dB
	1710,0 ... 1930,0 MHz	20,0	25,0	—	dB
	1930,0 ... 1975,0 MHz	18,0	20,0	—	dB
	1975,0 ... 1990,0 MHz	18,0	18,0	—	dB
	3420,0 ... 3980,0 MHz	22,0	28,0	—	dB
Attenuation	α				
	DC ... 1600,0 MHz	28	33	—	dB
	1600,0 ... 1830,0 MHz	25	28	—	dB
	1830,0 ... 1910,0 MHz	12	15	—	dB
	2010,0 ... 2070,0 MHz	14	18	—	dB
	2070,0 ... 4000,0 MHz	23	25	—	dB
	4000,0 ... 5000,0 MHz	18	20	—	dB
	5000,0 ... 6000,0 MHz	16	19	—	dB

* the insertion attenuation includes also pcb losses of typ. 0,2dB



SAW Components

B7720

Low-Loss Filter for Mobile Communication

1960,0 MHz

Data Sheet



Characteristics

Operating Temperature Range: $T = -10$ to $+80^{\circ}\text{C}$
 Terminating source impedance: $Z_S = 50\ \Omega$ (unbalanced)
 Terminating load impedance: $Z_L = 50\ \Omega$ (balanced)

			min.	typ.	max.	
Center frequency	f_C		—	1960,0	—	MHz
Maximum insertion attenuation	α_{\max}	1930,0 ... 1990,0 MHz	—	2,8	3,4*	dB
Amplitude ripple (p-p)	$\Delta\alpha$	1930,0 ... 1990,0 MHz	—	1,0	1,8	dB
Input VSWR		1930,0 ... 1990,0 MHz	—	1,8	2,0	
Output VSWR		1930,0 ... 1990,0 MHz	—	1,8	2,0	
Output phase balance ($\phi(S_{31}) - \phi(S_{21}) + 180^{\circ}$)		1930,0 ... 1990,0 MHz	-15	—	17	$^{\circ}$
Output amplitude balance (S_{31}/S_{21})		1930,0 ... 1990,0 MHz	-3,0	—	3,0	dB
Differential to common mode suppression	S_{sc12}					
		855,0 ... 995,0 MHz	22,0	29,0	—	dB
		1710,0 ... 1930,0 MHz	20,0	25,0	—	dB
		1930,0 ... 1975,0 MHz	18,0	20,0	—	dB
		1975,0 ... 1990,0 MHz	17,0	18,0	—	dB
		3420,0 ... 3980,0 MHz	22,0	28,0	—	dB
Attenuation	α					
		DC ... 1600,0 MHz	28	33	—	dB
		1600,0 ... 1830,0 MHz	25	28	—	dB
		1830,0 ... 1910,0 MHz	10	11	—	dB
		2010,0 ... 2070,0 MHz	10	14	—	dB
		2070,0 ... 4000,0 MHz	23	25	—	dB
		4000,0 ... 5000,0 MHz	18	20	—	dB
		5000,0 ... 6000,0 MHz	16	19	—	dB

* the insertion attenuation includes also pcb losses of typ. 0,2dB



SAW Components

B7720

Low-Loss Filter for Mobile Communication

1960,0 MHz

Data Sheet



Characteristics

Operating Temperature Range: $T = -40$ to $+85^{\circ}\text{C}$
 Terminating source impedance: $Z_S = 50\ \Omega$ (unbalanced)
 Terminating load impedance: $Z_L = 50\ \Omega$ (balanced)

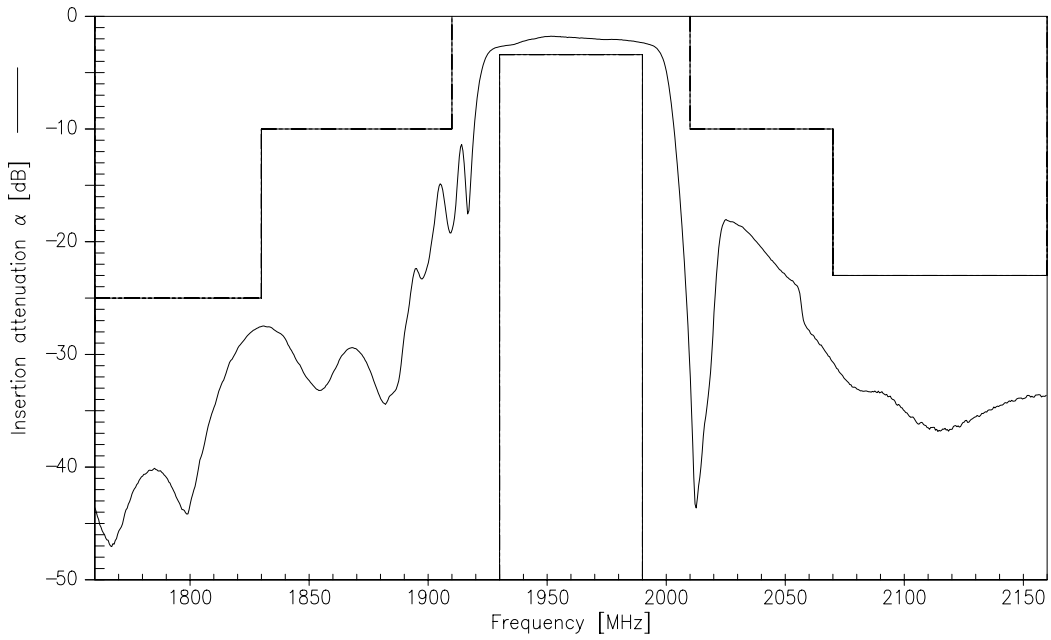
			min.	typ.	max.	
Center frequency	f_C		—	1960,0	—	MHz
Maximum insertion attenuation	α_{\max}	1930,0 ... 1990,0 MHz	—	3,6	4,1*	dB
Amplitude ripple (p-p)	$\Delta\alpha$	1930,0 ... 1990,0 MHz	—	1,8	2,5	dB
Input VSWR		1930,0 ... 1990,0 MHz	—	2,0	2,2	
Output VSWR		1930,0 ... 1990,0 MHz	—	2,0	2,2	
Output phase balance ($\phi(S_{31}) - \phi(S_{21}) + 180^{\circ}$)		1930,0 ... 1990,0 MHz	-15	—	17	$^{\circ}$
Output amplitude balance ($ S_{31}/S_{21} $)		1930,0 ... 1990,0 MHz	-3,5	—	3,0	dB
Differential to common mode suppression	S_{sc12}					
		855,0 ... 995,0 MHz	22,0	29,0	—	dB
		1710,0 ... 1930,0 MHz	20,0	25,0	—	dB
		1930,0 ... 1975,0 MHz	18,0	20,0	—	dB
		1975,0 ... 1990,0 MHz	16,0	18,0	—	dB
		3420,0 ... 3980,0 MHz	22,0	28,0	—	dB
Attenuation	α					
		DC ... 1600,0 MHz	28	33	—	dB
		1600,0 ... 1830,0 MHz	25	28	—	dB
		1830,0 ... 1910,0 MHz	10	11	—	dB
		2010,0 ... 2070,0 MHz	6**	7**	—	dB
		2070,0 ... 4000,0 MHz	23	25	—	dB
		4000,0 ... 5000,0 MHz	18	20	—	dB
		5000,0 ... 6000,0 MHz	16	19	—	dB

* the insertion attenuation includes also pcb losses of typ. 0,2dB

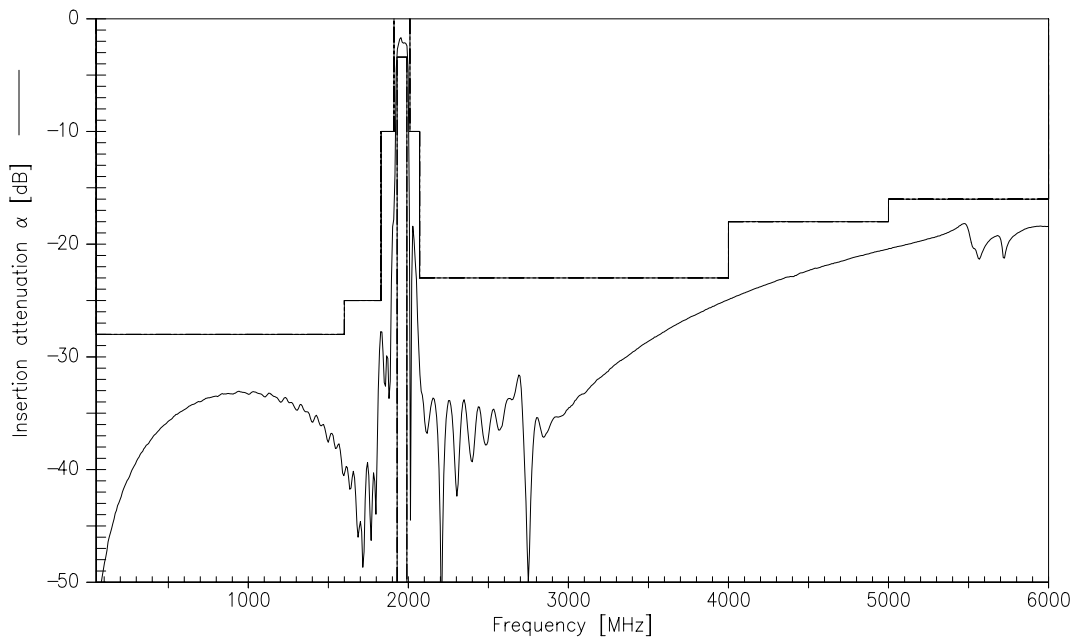
** 8dB min. (9dB typ.) for $T = -30$ to $+85^{\circ}\text{C}$



Transfer function (T=-10 ... 80 °C)(narrow band)



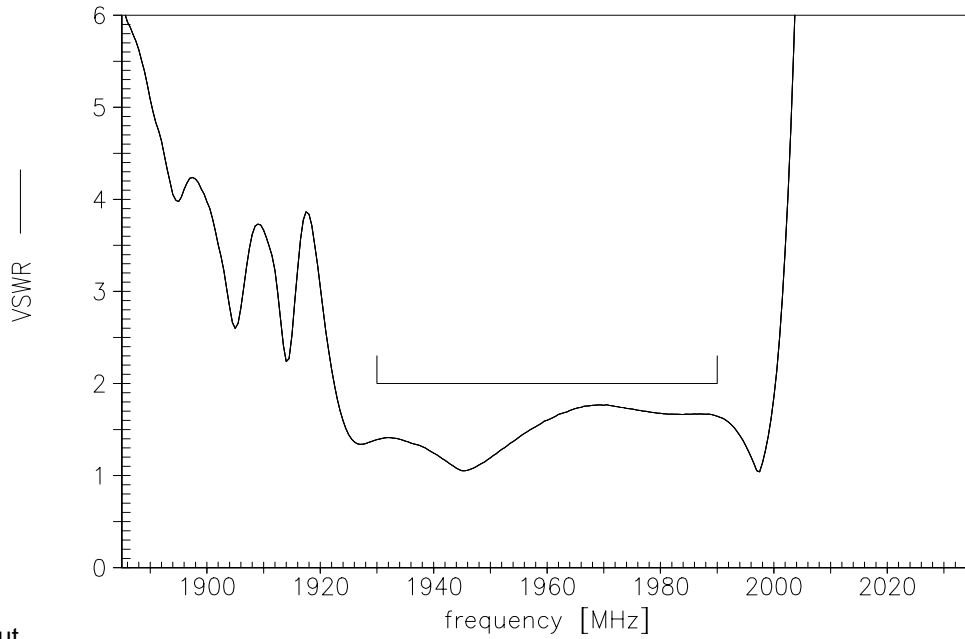
Transfer function (wide band)



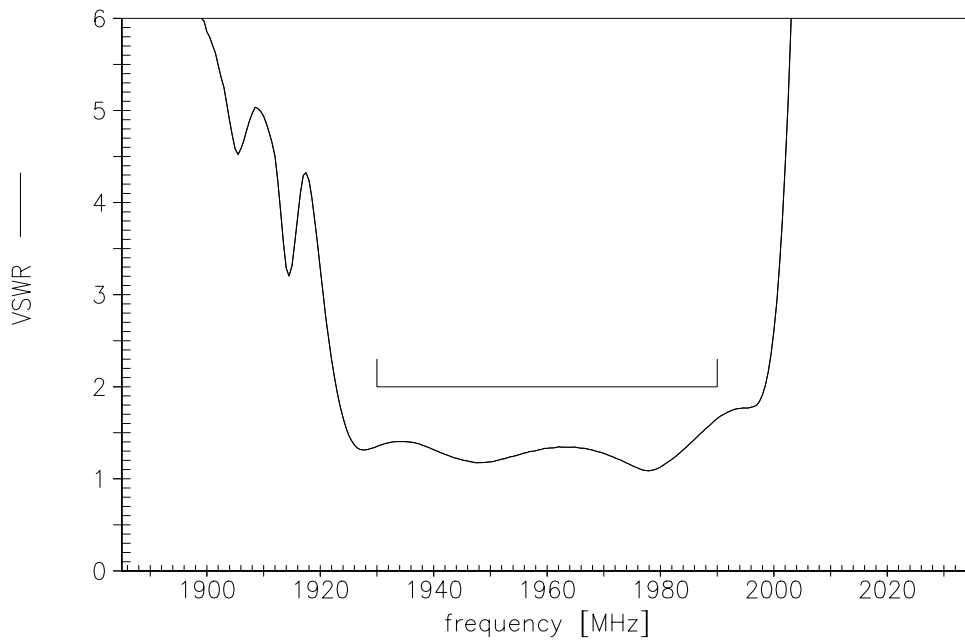


VSWR (T=-10 ... 80 °C)(narrow band)

Input



Output





SAW Components

B7720

Low-Loss Filter for Mobile Communication

1960,0 MHz

Data Sheet



Published by EPCOS AG

Surface Acoustic Wave Components Division, SAW MC WT

P.O. Box 80 17 09, 81617 Munich, GERMANY

© EPCOS AG 2002. Reproduction, publication and dissemination of this brochure and the information contained therein without EPCOS' prior express consent is prohibited.

Purchase orders are subject to the General Conditions for the Supply of Products and Services of the Electrical and Electronics Industry recommended by the ZVEI (German Electrical and Electronic Manufacturers' Association), unless otherwise agreed.

This brochure replaces the previous edition.

For questions on technology, prices and delivery please contact the Sales Offices of EPCOS AG or the international Representatives.

Due to technical requirements components may contain dangerous substances. For information on the type in question please also contact one of our Sales Offices.