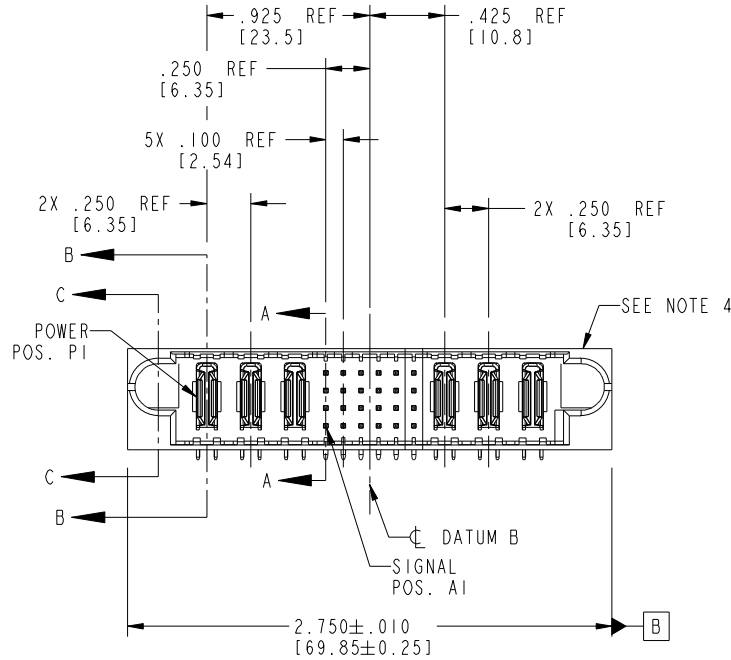
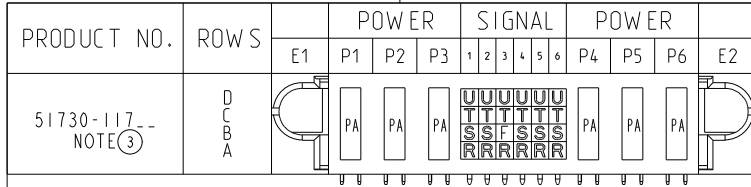


Tous droits strictement réservés. Reproduction ou communication à des tiers interdite sous quelque forme que ce soit sans autorisation écrite du propriétaire. Propriété de c.FCI. Droits de reproduction FCI.

All rights strictly reserved. Reproduction or issue to third parties in any form whatever is not permitted without written authority from the proprietor. Property of FCI. Copyright FCI.



CODE	DIM "M" MATING LENGTH	CONTACT TYPE
F	.220 [5.59]	SIGNAL
R	.270 [6.86]	SIGNAL
S	.270 [6.86]	SIGNAL
T	.270 [6.86]	SIGNAL
U	.270 [6.86]	SIGNAL
PA	N/A [N/A]	POWER

mat'l code				SEE NOTE 2		tolerances unless otherwise specified		CUSTOMER		FCI	
ltr	ecn no.	dr	date	linear	.XX±.01/0.X±0.3	projection	www.fciconnect.com				
A	DG05-0283	SW	08/17/05		.XXX±.005/0.XX±0.13		title 3P + 24S + 3P				
B	DG05-0455	CS	11/12/05	angles	.XXX±.002/0.XXX±0.051		RIGHT ANGLE SOLDER HEADER				
C	DG08-0253	SH	09/13/08		0°±7°		product family PwrBlade code 213				
				dr	STEVEN WANG	08/17/05	INCH/MM		size	dwg no	sheet
				enr	STEVEN WANG	08/17/05	scale		A	51730-117	1 of 4
				chr	VICTOR LIN	08/17/05	1:1				
				appd	JOSEPH HSIA	08/17/05					
sheet index	revision sheet	C	C	C	C	C			cage code 22526		
		1	2	3	4						

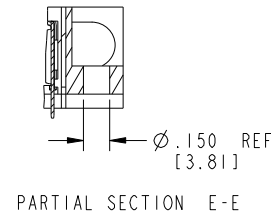
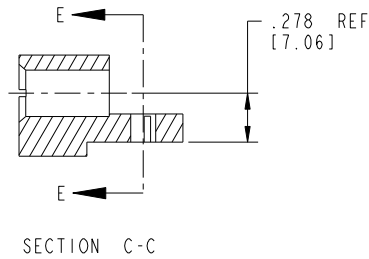
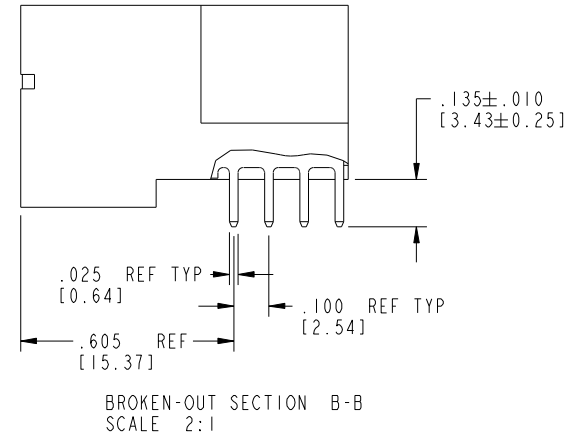
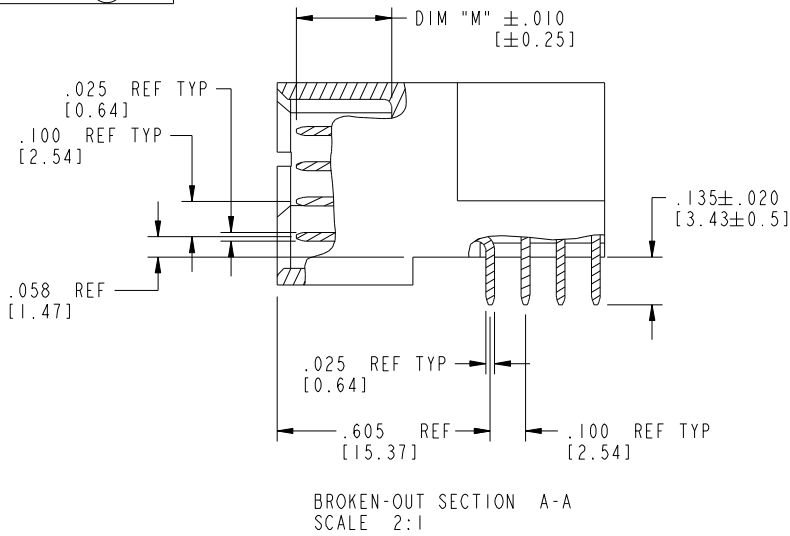
Pro/E

cage code 22526

Tous droits strictement réservés. Reproduction ou communication à des tiers interdite sous quelque forme que ce soit sans autorisation écrite du propriétaire. Propriété de c.FCI. Droits de reproduction FCI.

All rights strictly reserved. Reproduction or issue to third parties in any form whatever is not permitted without written authority from the proprietor. Property of FCI. Copyright FCI.

PRODUCT NUMBER
51730-117--
NOTE (3)



mat'l code		SEE NOTE 2		tolerances unless otherwise specified		CUSTOMER		FCI	
ltr	ecn no.	dr	date	linear	.XX±.01/0.X±0.3	COPY		www.fciconnect.com	
C					.XXX±.005/0.XX±0.13	projection		title 3P + 24S + 3P	
				angles	.XXX±.0020/0.XXX±0.051	INCH/MM		RIGHT ANGLE SOLDER HEADER	
				dr	0°±2°	scale		product family PwrBlade code 213	
				enr	STEVEN WANG 08/17/05	1:1		size dwg no 213	
				chr	STEVEN WANG 08/17/05	A		sheet 2 of 4	
				appd	VICTOR LIN 08/17/05			51730-117	
					JOSEPH HSIA 08/17/05				
sheet index	revision sheet								

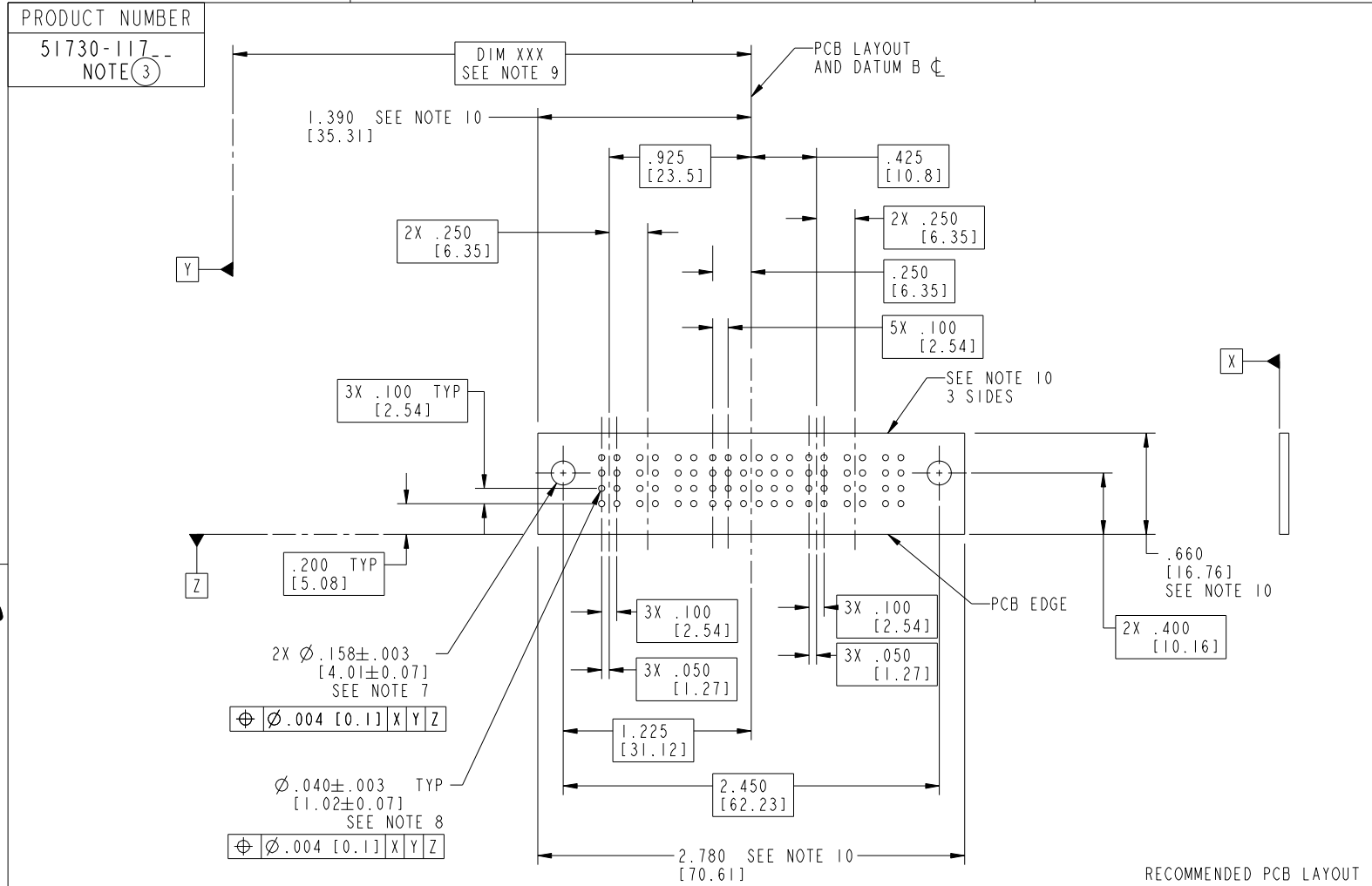
Pro/E

cage code 22526

Tous droits strictement réservés. Reproduction ou communication à des tiers interdite sous quelque forme que ce soit sans autorisation écrite du propriétaire. Propriété de c.FCI. Droits de reproduction FCI.



All rights strictly reserved. Reproduction or issue to third parties in any form whatever is not permitted without written authority from the proprietor. Property of FCI. Copyright FCI.



RECOMMENDED PCB LAYOUT

mat'l code		SEE NOTE 2		tolerances unless otherwise specified		CUSTOMER		 www.fciconnect.com	
ltr	ecn no.	dr	date	linear	.XX±.01/0.X±0.3	COPY		title	
C					.XXX±.005/0.XX±0.13	projection		3P + 24S + 3P	
				angles	.XXX±.0020/0.XXX±0.051			RIGHT ANGLE SOLDER HEADER	
				dr	0°±2°	INCH/MM		product family	
				enr	STEVEN WANG 08/17/05	scale		PwrBlade	
				chr	STEVEN WANG 08/17/05	1:1		code	
				appd	VICTOR LIN 08/17/05			size	
					JOSEPH HSIA 08/17/05			dwg no	
sheet index	revision sheet							51730-117	
								sheet	
								3 of 4	

cage code 22526

Tous droits strictement reserves. Reproduction ou communication a des tiers interdite sous quelque forme que ce soit sans autorisation écrite du propriétaire. Propriete de c FCI. Droits de reproduction FCI.

All rights strictly reserved. Reproduction or issue to third parties in any form whatever is not permitted without written authority from the proprietor. Property of FCI. Copyright FCI.

PRODUCT NUMBER
51730-117--
NOTE (3)

NOTES:

1. DIMENSIONS AND TOLERANCES ARE IN ACCORDANCE WITH ASME Y14.5M, 1994 UNLESS OTHERWISE SPECIFIED.

CONNECTOR NOTES:

- 2. HOUSING MATERIAL: UL 94 V-0 GLASS FILLED HIGH-TEMP THERMOPLASTIC
POWER CONTACT MATERIAL: COPPER ALLOY
SIGNAL PIN MATERIAL: COPPER ALLOY
 - 3. PLATING:
△ SEE ITEM 1 & 2 IN PRINT 10064183 FOR PLATING SPEC OF 51730-117 AND 51730-117LF RESPECTIVELY
 - 4. MANUFACTURER'S NAME, P/N, AND DATE CODE TO APPEAR ON THIS SURFACE.
 - 5. PRODUCT SPECIFICATION GS-12-149.
APPLICATION SPECIFICATION BUS-20-067.
- PCB NOTES:
- 6. ALL HOLE DIAMETERS ARE FINISHED HOLE SIZE.
 - 7. MOUNTING HOLES, WHERE APPLICABLE, ARE UNPLATED.
 - 8. $\varnothing .0453 \pm 0.0010$ [1.151 ± 0.025] DRILLED HOLES PLATED WITH
0.0003 [0.008] MIN SnPb OVER .001 [0.03]
TO .003 [0.08] Cu PLATING TO ACHIEVE
 $\varnothing .040 \pm .003$ [$1.02 \pm .07$] HOLE.
 - 9. "DIM XXX" TO BE DETERMINED BY THE CUSTOMER.
 - 10. CONNECTOR KEEP-OUT ZONE.
- 11: A △ SYMBOL WILL BE NEXT TO ANY DIMENSION, VIEW, OR NOTE WHICH HAS BEEN MODIFIED WITH CURRENT DRAWING VERSION.

mat'l code		SEE NOTE 2		tolerances unless otherwise specified		CUSTOMER		FCI		www.fciconnect.com		
ltr	ecn no.	dr	date	linear	.XX±.01/0.X±0.3	COPY		title 3P + 24S + 3P				
C					.XXX±.005/0.XX±0.13	projection		RIGHT ANGLE SOLDER HEADER				
				angles	.XXX±.0020/0.XXX±0.051			product family PwrBlade code 213				
				dr	0°±2°	INCH/MM		size		sheet		
				enr	STEVEN WANG 08/17/05	scale		dwg no		4 of 4		
				chr	STEVEN WANG 08/17/05	1:1		A		51730-117		
				appd	VICTOR LIN 08/17/05							
					JOSEPH HSIA 08/17/05							
sheet index	revision sheet											

cage code 22526