

RoHS COMPLIANT

**Electrical Characteristics**

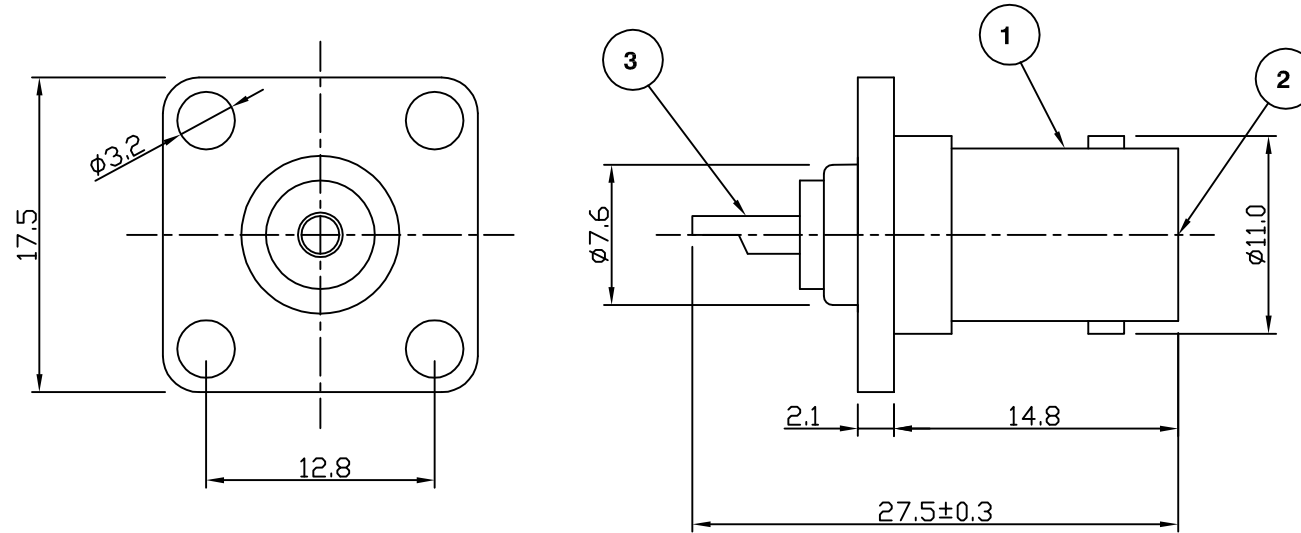
Nominal Impedance: 50 ohms  
 Frequency Range: DC to 4 GHz  
 VSWR: 1.3:1 maximum  
 Insertion Loss: 0.2 dB at 4 GHz  
 Operating Voltage (rms): 500 V maximum at sea level  
 Dielectric Withstand Voltage (rms): 1500 V maximum at sea level  
 Contact Resistance: 3.0 milliohms maximum  
 Insulation Resistance: 5000 megohms minimum

**Mechanical Characteristics**

Mating Cycles: 500 cycles minimum  
 Interface Dimensions: Conform to MIL-C-39012

**Environmental Characteristics**

Temperature Range: -55 °C to + 85 °C



	PART	DESCRIPTION
1	Body	Brass, nickel plated
2	Dielectric	POM
3	Contact	Brass, gold plated

Drawing Update	JT	4	26 April 10
CAD Issue	SN	3	04 Feb 02
Up Issue	VEL	2	14 Aug 98
First Issue	IS	1	25 Feb 92
DESCRIPTION OF REVISION	APPVD	ISS	DATE



Cinch Connectivity Solutions  
 7-13 Russel Way,  
 Widford Industrial Estate,  
 Chelmsford, Essex,  
 CM1 3AA, UK.  
 Tel: +44 (0) 1245 359515  
 Fax: +44 (0) 1245 358938

SCALE: Not To Scale

DIMENSIONS: mm

TOLERANCES:  
 $\pm 0.2$ mm unless  
 otherwise stated

DRAWN BY:

S Nash

CHECKED BY:

S Nash

APPROVED BY:

M Nielsen

DATE:

04 Feb 02

TITLE:

BNC Flange Mount Jack

PART NUMBER:

**VB511**

PAGE: 1 of 1