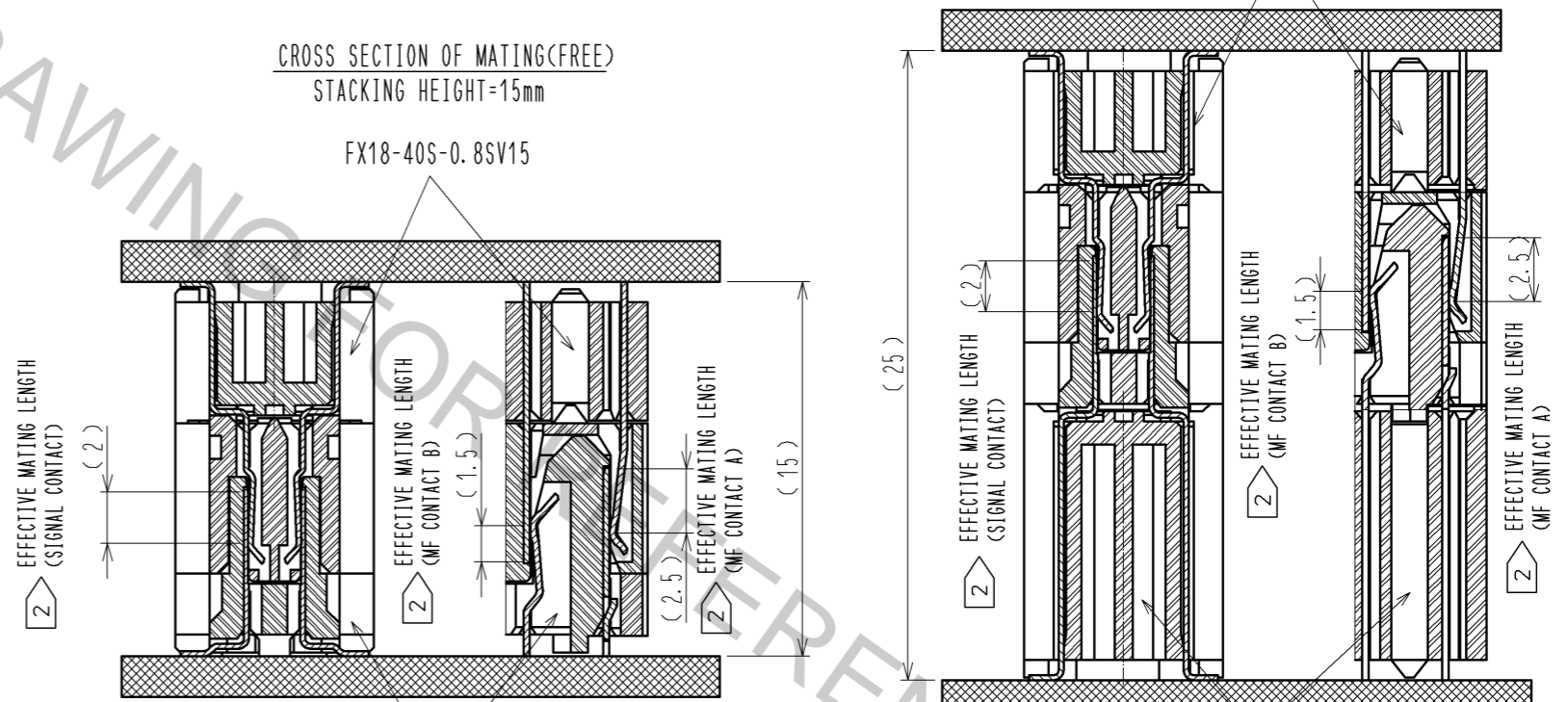


CROSS SECTION OF MATING(FREE)  
STACKING HEIGHT=25mm

FX18-40S-0.8SV15

CROSS SECTION OF MATING(FREE)  
STACKING HEIGHT=15mm

FX18-40S-0.8SV15



FX18-40P-0.8SV

FX18-40P-0.8SV10

NOTE 1 LEAD CO-PLANARITY IS 0.1mm MAX.

② CONTACTS ARE 3 STEPS SEQUENTIAL. (MF CONTACT A=>SIGNAL CONTACT=>MF CONTACT B) WHEN USING THIS SEQUENTIAL STRUCTURE, PLEASE AVOID ANGLED INSERTION.

③ MF CONTACT A AND MF CONTACT B CAN BE USED AS POWER SUPPLY CONTACT. (3A/PIN MAX)

④ IT SHOWS THE VACUUM PICKUP AREA. (SEE PAGE 2)

REMOVE THE MYLAR TAPE BEFORE MATING CONNECTORS.

⑤ THIS IS PACKAGED IN TRAY. (60pcs/TRAY)

⑥ BLEMISH AND HIT MARK CAN BE OCCURED THROUGH OUT THE MANUFACTURING PROCESS WHICH DOESN' T AFFECT QUALITY LEVEL.

⑦ THE DIMENSIONS IN PARENTHESES ARE FOR REFERENCES.

| NO. | MATERIAL        | FINISH | REMARKS   | NO. | MATERIAL     | FINISH | REMARKS   |
|-----|-----------------|--------|---|-----|--------------|--------|---|
| 3   | PHOSPHOR BRONZE |        | CONTACT AREA:GOLD 0.1 μm<br>LEAD AREA:GOLD 0.03 μm<br>UNDER PLATING:NICKEL 1.3 μm | 5   | COPPER ALLOY |        | CONTACT AREA:GOLD 0.1 μm<br>LEAD AREA:TIN-PLATING 1 μm<br>UNDER PLATING:NICKEL 1.3 μm |
| 2   | POLYAMIDE       | BLACK  | UL94V-0   | 4   | COPPER ALLOY |        | CONTACT AREA:GOLD 0.1 μm<br>LEAD AREA:TIN-PLATING 1 μm<br>UNDER PLATING:NICKEL 1.3 μm |
| 1   | POLYAMIDE       | BLACK  | UL94V-0   |     |              |        |   |

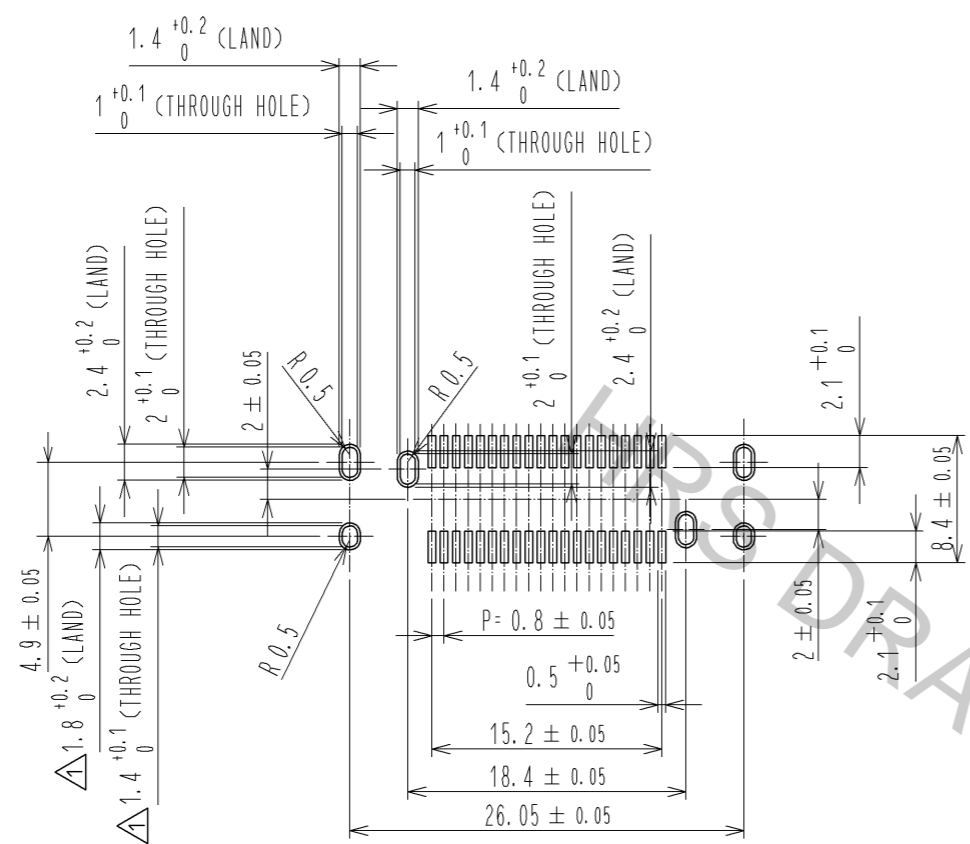
| UNITS | SCALE | COUNT | DESCRIPTION OF REVISIONS | DESIGNED | CHECKED      | DATE     |
|-------|-------|-------|--------------------------|----------|--------------|----------|
| mm    | 2 : 1 | 4     | DIS-F-005578             | TH. SANO | KI. HIROKAWA | 11.07.21 |

| APPROVED  | CHECKED      | DESIGNED | DRAWN    | DRAWING NO.    | PART NO.         | CODE NO.        |
|-----------|--------------|----------|----------|----------------|------------------|-----------------|
| HS. OKAWA | KI. HIROKAWA | TH. SANO | TH. SANO | EDC3-334386-00 | FX18-40S-0.8SV15 | CL579-0026-3-00 |

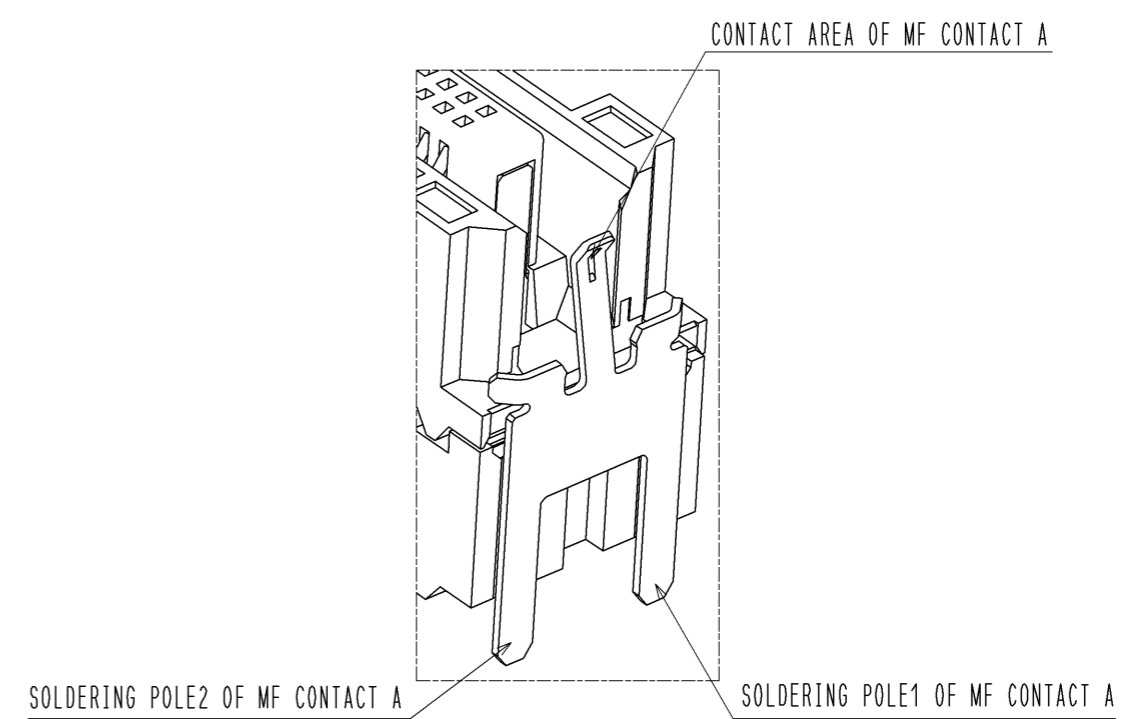
Apr.1.2017 Copyright 2017 HIROSE ELECTRIC CO., LTD. All Rights Reserved.

RECOMMENDED LAND PATTERN DIMENSION OF PCB(2:1)  
(PCB THICKNESS:t=1.6mm METAL MASK THICKNESS:t=0.12mm)

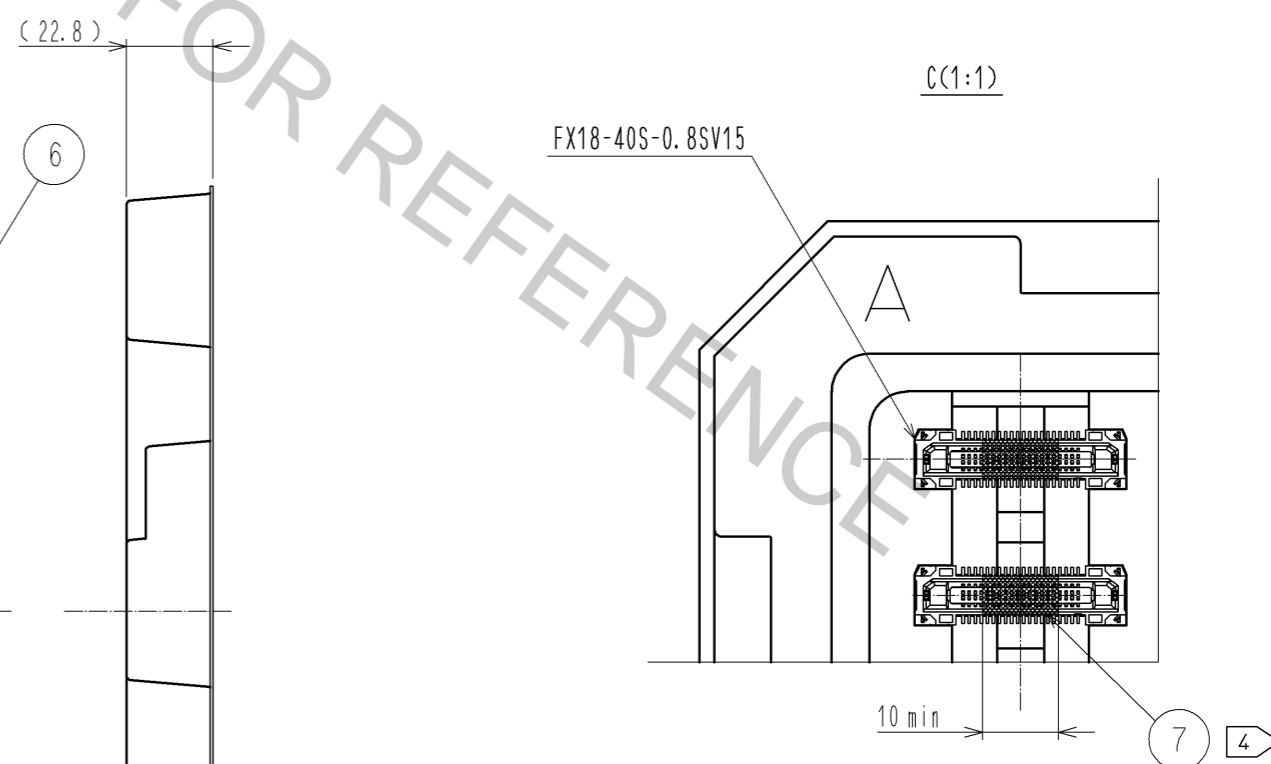
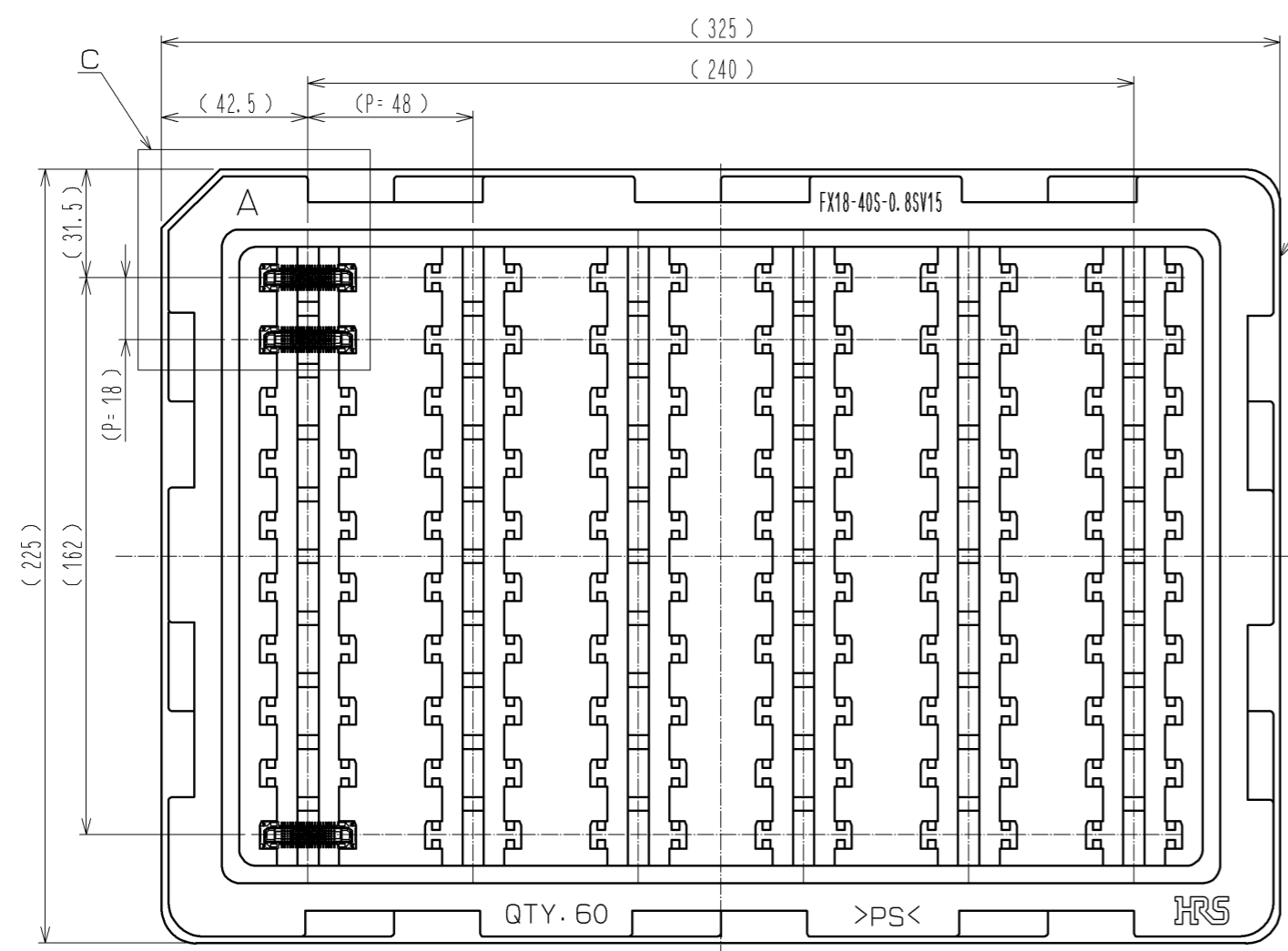


5 DRAWING FOR PACKING(1:2)

1 8 CONFIGURATION OF MF CONTACT A



NOTE 8 SOLDERING LEAD OF MF CONTACT A SPLITS INTO TWO POLES.  
BE SURE TO CONNECT TO THE SAME CIRCUIT.



|            |             |                  |
|------------|-------------|------------------|
| <b>HRS</b> | DRAWING NO. | EDC3-334386-00   |
|            | PART NO.    | FX18-40S-0.8SV15 |
|            | CODE NO.    | CL579-0026-3-00  |
|            |             | 1/2              |