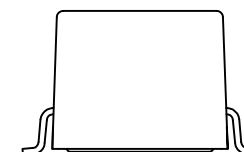
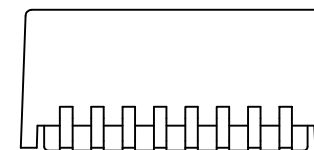
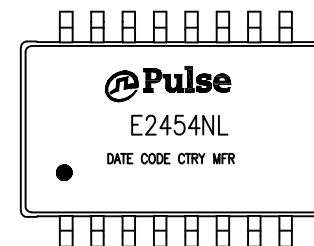


NOTES:

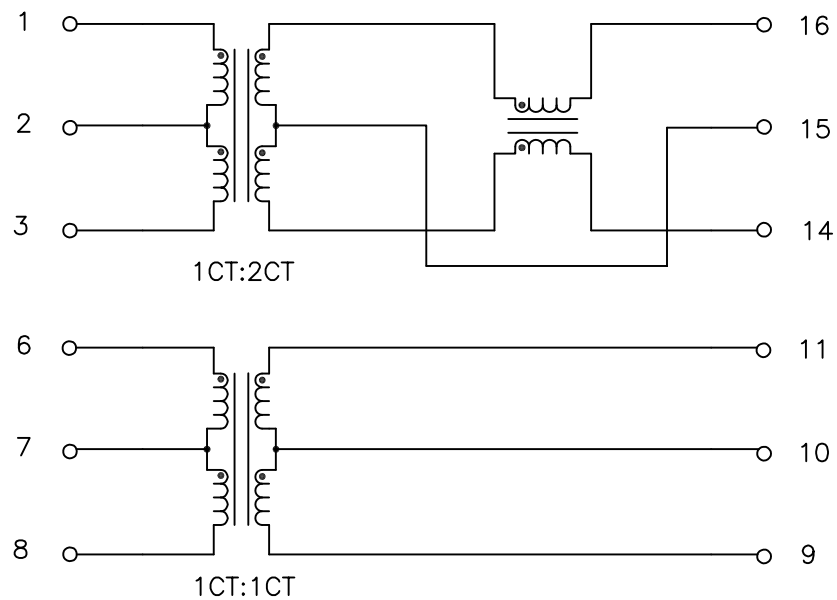
1. ROHS COMPLIANT
2. HEADER: PHENOLIC WITH FLAMMABILITY RATING UL 94V-0 OR BETTER.
3. STORAGE TEMPERATURE: -20°C TO +125°C
4. COMPLIANCE TO J-STD:
 - A. J-STD-002: SOLDERABILITY AT 245°C REFLOW PROFILE
 - B. J-STD-020: LEVEL 1, NO MOISTURE SENSITIVE
 - C. J-STD-075: R7, 245°C MAXIMUM THROUGH REFLOW SOLDER
5. TO ORDER TAPE & REEL PACKAGING ADD A "T" SUFFIX TO THE PART NUMBER(i.e E2454NL BECOMES E2454NLT).



FINAL OUTLINE

© Copyright, 2017. Pulse Electronics Corp. All rights reserved. Pulse confidential & proprietary. (05/02/17)

PRODUCT DESCRIPTION	TLA DRAWING	PS DRAWING	SHEET	PART NO.	DATASHEET REV.
MDL,SIN,10D,1:2,SM,TU	E2454NL-13	PS-0125.001-C	1 OF 3	E2454NL	A



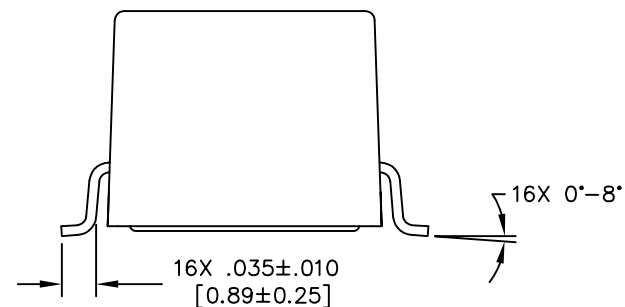
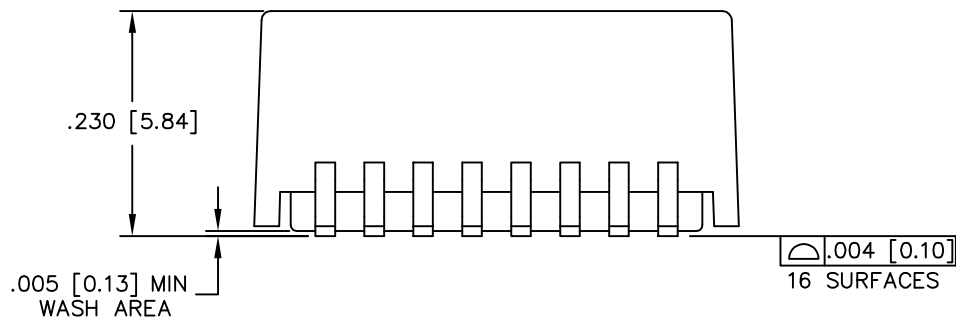
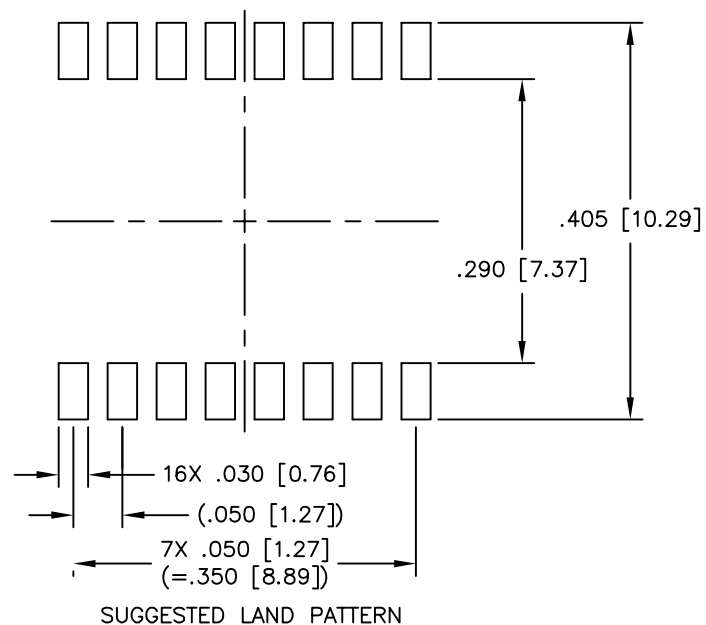
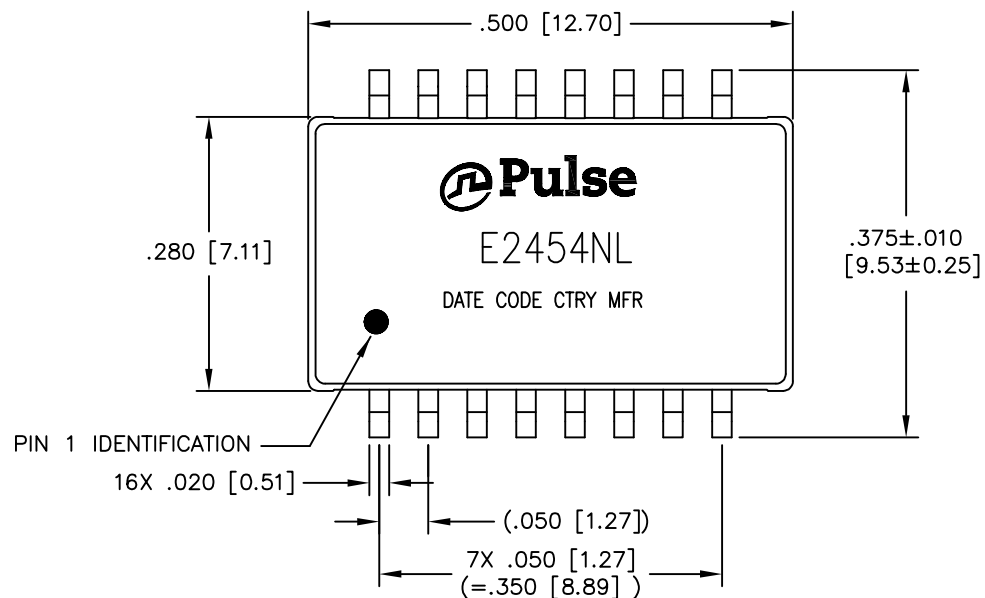
SCHEMATIC

ELECTRICAL CHARACTERISTICS AT +25°C UNLESS OTHER SPECIFIED

PARAMETER	SPECIFICATIONS
URNS RATIO	1CT:2CT, 1CT:1CT ±2%
INDUCTANCE(LP) (MEDIA SIDE, 0°C ~ 70°C)	200 uH MIN (AT 1 MHz 0.1VRMS)
LEAKAGE INDUCTANCE	.30 uH MAX (AT 1 MHz 0.1VRMS)
DC RESISTANCE 1/2 WINDING	0.50 OHM MAX
COUPLING CAPACITANCE	12.0 pF MAX (AT 1 MHz, 0.1VRMS)
INPUT – OUTPUT ISOLATION	1500 VRMS MIN @ 60 SECONDS

© Copyright, 2017. Pulse Electronics Corp. All rights reserved. Pulse confidential & proprietary. (05/02/17)

PRODUCT DESCRIPTION	TLA DRAWING	PS DRAWING	SHEET	PART NO.	DATASHEET REV.
MDL,SIN,10D,1:2,SM,TU	E2454NL-13	PS-0125.001-C	2 OF 3	E2454NL	A



DIMENSIONS ARE IN INCHES [MILLIMETERS] WITH THE FOLLOWING TOLERANCES: [MILLIMETERS] ARE FOR REFERENCE ONLY.
 .XX= $\pm .01$ [± 0.25]
 .XXX= $\pm .005$ [± 0.13]

© Copyright, 2017. Pulse Electronics Corp. All rights reserved. Pulse confidential & proprietary. (05/02/17)

PRODUCT DESCRIPTION	TLA DRAWING	PS DRAWING	SHEET	PART NO.	DATASHEET REV.
MDL,SIN,10D,1:2,SM,TU	E2454NL-13	PS-0125.001-C	3 OF 3	E2454NL	A