

3.5x2.9mm Compact Tactile Switch

Features

Optimized Mechanical Features

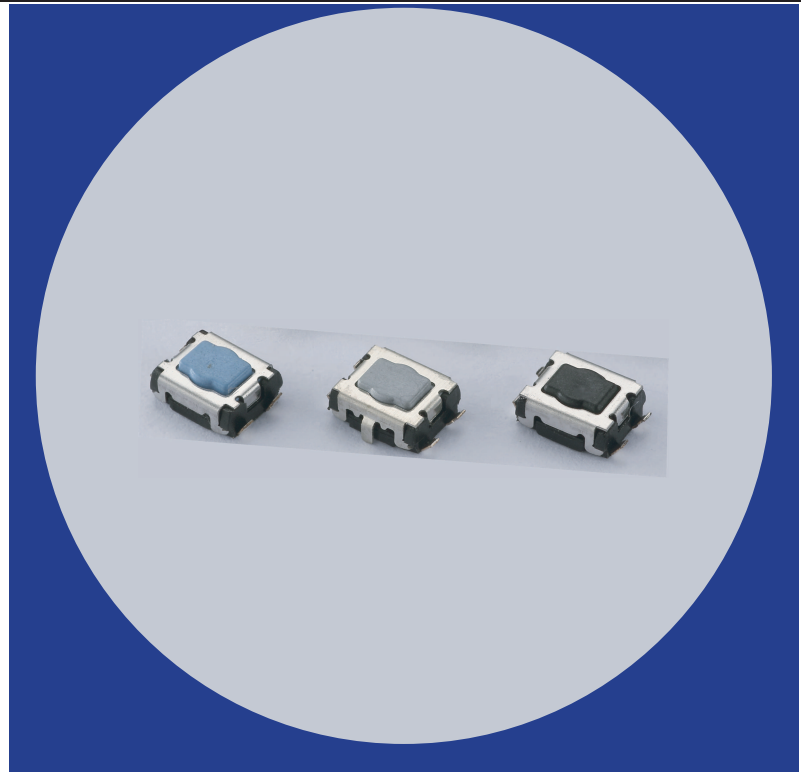
- Surface mount J bend terminal configuration
- Compatible with IR reflow and manual soldering
- Variety of operating force options

Optimized Contact System

- Excellent tactile feedback

Materials

- Silver coated terminals for better solderability
- High temperature materials (UL94V-0)
- RoHS compliant



Electrical and Mechanical Specifications

Switch Contact Resistance

100 milliohms maximum

Insulation Resistance

100 Megohms minimum between insulated terminals

Maximum Rating

50mA, 12 VDC

Dielectric Strength

250 VAC for 1 minute between adjacent terminals

Operating Force

100, 160, 200, 350 or 500 gf

Travel

0.15mm

Operating Temperature

- 40°C to +85°C

Storage Temperature

- 40°C to +85°C

Actuator Strength

3 Kgf. maximum

Actuation Life

100 gf: 1,000,000 cycles
160 gf: 200,000 cycles
200 gf: 200,000 cycles
350 gf: 200,000 cycles
500 gf: 100,000 cycles

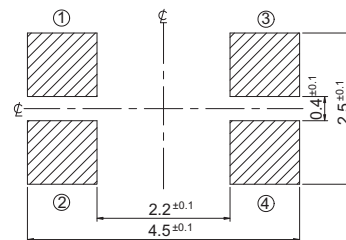
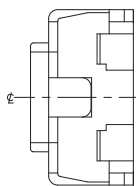
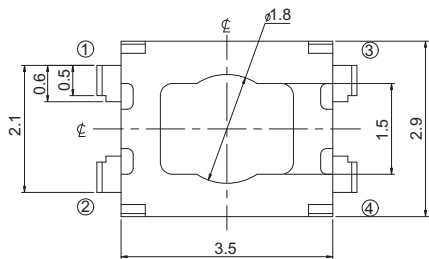
Allowable Solder Time

IR Reflow: Up to 5 seconds at 260°C
Manual soldering: Up to 3 seconds at 350°C

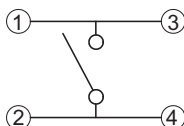
Packaging

Standard: Tape and reel packaging with 330mm diameter reel and 12mm wide plastic tape

CTS SERIES 226BJ... - Surface Mount J Bend, Without Ground

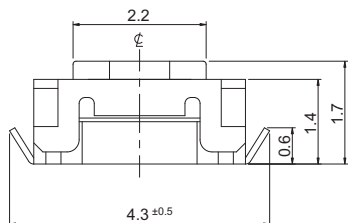


CIRCUIT DIAGRAM

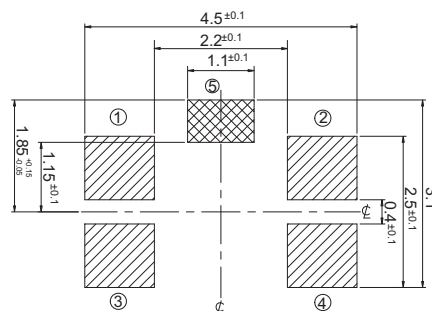
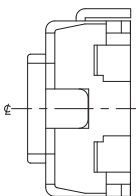
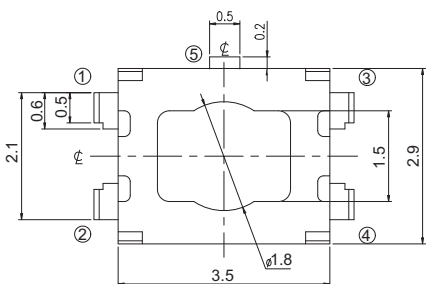


PCB LAYOUT

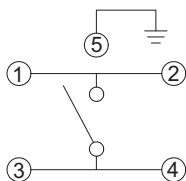
DIMENSION : mm
STANDARD TOLERANCE :
X (1 PLACE) : ±0.30



CTS SERIES 226BJ...G - Surface Mount J Bend, With Ground

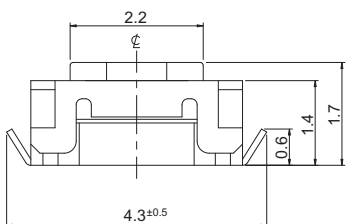


CIRCUIT DIAGRAM



PCB LAYOUT

DIMENSION : mm
STANDARD TOLERANCE :
X (1 PLACE) : ±0.30



Ordering Information

