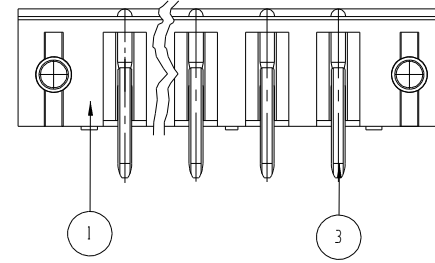
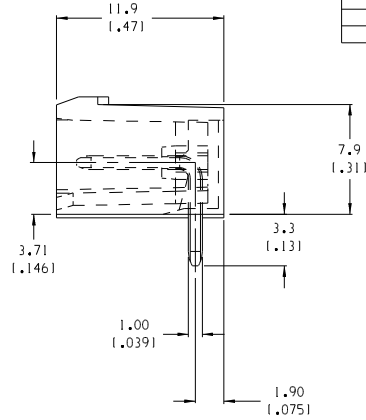
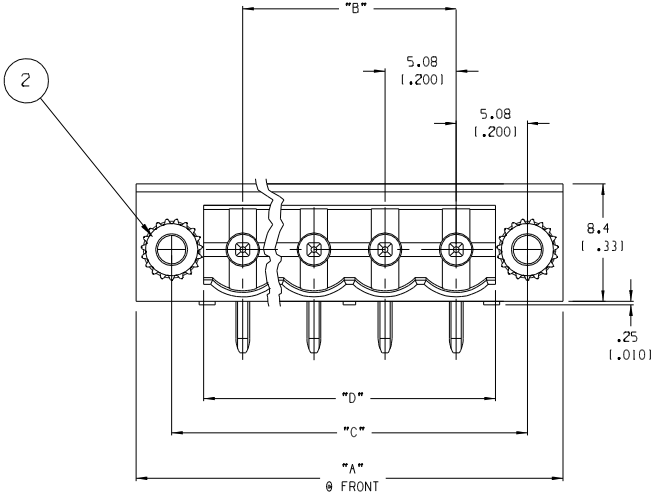
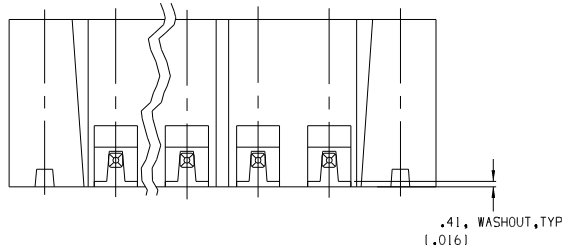


RECOMMENDED PLATED THRU HOLE PATTERN
SCALE 2:1

# OF CTS.	DIM. "A" ±.015	DIM. "B" ±.015	DIM. "C" ±.015	DIM. "D" ±.015	MATERIAL # W/ GOLD PIN	MATERIAL # W/ TIN PIN
02	20.3 (1.801)	50.8 (1.200)	15.24 (1.600)	10.7 (1.421)	39861-1602	39860-1602
03	25.4 (1.001)	10.16 (1.400)	20.32 (1.800)	15.7 (1.621)	39861-1603	39860-1603
04	30.5 (1.201)	15.24 (1.600)	25.40 (1.000)	20.8 (1.821)	39861-1604	39860-1604
05	35.6 (1.401)	20.32 (1.800)	30.48 (1.200)	25.9 (1.021)	39861-1605	39860-1605
06	40.6 (1.601)	25.40 (1.000)	35.56 (1.400)	31.0 (1.221)	39861-1606	39860-1606
07	45.7 (1.801)	30.48 (1.200)	40.64 (1.600)	36.1 (1.421)	39861-1607	39860-1607
08	50.8 (2.001)	35.56 (1.400)	45.72 (1.800)	41.1 (1.621)	39861-1608	39860-1608
09	55.9 (2.201)	40.64 (1.600)	50.80 (2.000)	46.2 (1.821)	39861-1609	39860-1609
10	61.0 (2.601)	45.72 (1.800)	55.88 (2.200)	51.3 (2.021)	39861-1610	39860-1610
11	66.0 (2.801)	50.80 (2.000)	60.96 (2.400)	56.4 (2.221)	39861-1611	39860-1611
12	71.1 (2.801)	55.88 (2.200)	66.04 (2.600)	61.5 (2.421)	39861-1612	39860-1612

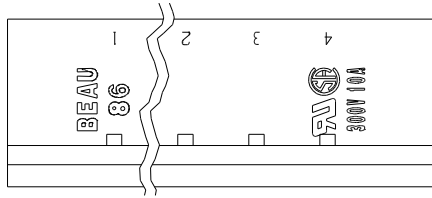


- NOTES:
1. MATERIAL: SEE TABLE
 2. FINISHES: SEE TABLE
 3. PRODUCT SPECIFICATION: AS REQUIRED
 4. PACKAGING: NOT REQUIRED
 5. MATES WITH: 86 SERIES PLUGS
 6. .0055 IN./IN. ALLOWABLE BOW.
 7. SEE SHEET 2 OF 2 FOR IMPRINTING OPTIONS.
 8. "XX" REFERS TO THE NUMBER OF CIRCUITS



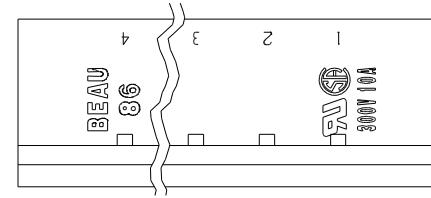
ITEM	QTY.	DESCRIPTION	MATERIAL	FINISH
3	"XX"	RIGHT ANGLE GOLD PLATED PINS	BRASS	GOLD
	"XX"	RIGHT ANGLE HEADER PIN	BRASS	TIN
2	2	M2.5 THREADED BRASS INSERTS	BRASS	NICKEL
1	1	SR HDR .200 INSULATOR	THERMOPLASTIC	BLACK

EC NO. RELEASED DRWING: JF 11-24-04 CH'KT: APPR: A	DESCRIPTION: MAJOR CRITICAL C SPC S	GENERAL TOLERANCES: (UNLESS SPECIFIED)		SCALE 3:1	DESIGN UNITS <input type="checkbox"/> mm <input checked="" type="checkbox"/> INCH	THIRD ANGLE PROJECTION	PROJECT NO.: - -	DIMENSIONS: <input checked="" type="checkbox"/> mm <input type="checkbox"/> INCH <input type="checkbox"/> mm ONLY	SHT REV	
		4 PLACES mm INCH ±.0015		DRAWN BY & DATE J.FARMER 11-24-04		TITLE: HEADER RA, HT, W/MTG. ENDS ASSY.				
		3 PLACES ±.038 ±.005		CHECKED BY & DATE		APPROVED BY & DATE				
		2 PLACES ±.13 ±.01		1 PLACE ±.3		CAD FILENAME 8699XX.PRT		MATERIAL NO. SEE CHART	DRAWING NO. SD-39860-015	SHEET NO. 1 OF 1
ANGLAR: ±2°		DRAFT WHERE APPLICABLE MUST REMAIN WITHIN DIMENSIONS		THIS DRAWING CONTAINS INFORMATION THAT IS PROPRIETARY TO MOLEX INCORPORATED AND SHOULD NOT BE USED WITHOUT WRITTEN PERMISSION.					SIZE B	



IMPRINTING STYLE 11AV

MATERIAL # W/GOLD PIN	MATERIAL # W/ TIN PIN	# OF CTS.
	39863-1602	02
	39863-1603	03
	39863-1604	04
	39863-1605	05
	39863-1606	06
	39863-1607	07
	39863-1608	08
	39863-1609	09
	39863-1610	10
	39863-1611	11
	39863-1612	12



IMPRINTING STYLE 10AV

MATERIAL # W/GOLD PIN	MATERIAL # W/ TIN PIN	# OF CTS.
	39862-1602	02
	39862-1603	03
	39862-1604	04
	39862-1605	05
	39862-1606	06
	39862-1607	07
	39862-1608	08
	39862-1609	09
	39862-1610	10
	39862-1611	11
	39862-1612	12

EC NO. SEE SHEET - -	DRAWN: ONE CH: K: APPR: -	DESCRIPTION MAJOR CRITICAL SPC	QUALITY SYMBOLS		GENERAL TOLERANCES: (UNLESS SPECIFIED)		SCALE N/A	DESIGN UNITS <input type="checkbox"/> mm <input checked="" type="checkbox"/> INCH	THIRD ANGLE PROJECTION	PROJECT NO. -	-	-
			4 PLACES	mm	INCH	±.0015	±.0015	DRAWN BY & DATE J.FARMER 11-23-04	TITLE: HEADER RA, HT, W/MTG. ENDS ASSY.	DIMENSIONS:		SHT
			3 PLACES	±.038	±.005	CHECKED BY & DATE	MATERIAL NO. SEE CHART		DRAWING NO. SD-39860-015		SHEET NO. 1 OF 1	
			2 PLACES	±.13	±.01	APPROVED BY & DATE	CAD FILENAME 8699-XX.PRT		MATERIAL NO. SEE CHART		SIZE B	
			1 PLACE	±.3			THIS DRAWING CONTAINS INFORMATION THAT IS PROPRIETARY TO MOLEX INCORPORATED AND SHOULD NOT BE USED WITHOUT WRITTEN PERMISSION.					
				ANGULAR: ±2°								