

NOTES:

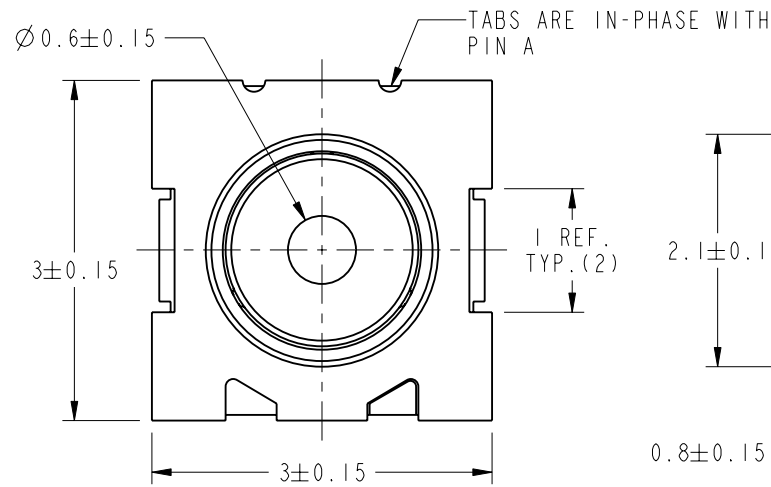
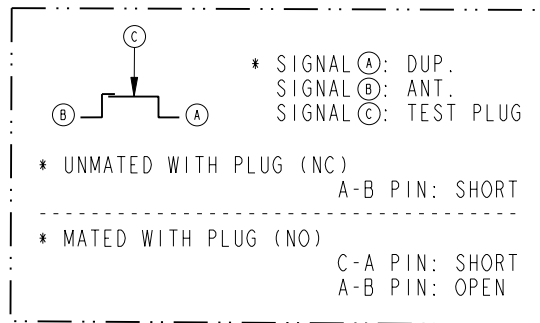
1. ELECTRICAL:
  - A. IMPEDENCE: 50Ω, NOMINAL
  - B. FREQUENCY RANGE: DC-6 GHz
  - C. VSWR: 1.2 MAX. @ DC-3 GHz, 1.4 MAX. @ 3-6 GHz
  - D. CONTACT RESISTANCE: 120 mΩ MAX
  - E. DIELECTRIC WITHSTANDING VOLTAGE: 250V AC FOR 1 MINUTE,
  - F. INSULATION RESISTANCE: 500 MEGOHMS MIN.
  - G. INSERTION LOSS: 0.1dB MAX. @ DC-3 GHz  
0.2dB MAX. @ 3-6 GHz
  - H. ISOLATION: 20dB MIN. @ DC-3 GHz  
15dB MIN. @ 3-6 GHz

2. PHYSICAL:
  - A. TEMPERATURE RANGE: -40°C TO +85°C
  - B. DURABILITY: 500 CYCLES
  - C. SUITABLE FOR LEAD-FREE SOLDER REFLOW PROCESS PER AMPHENOL SPEC. 349-50712

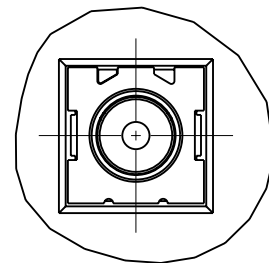
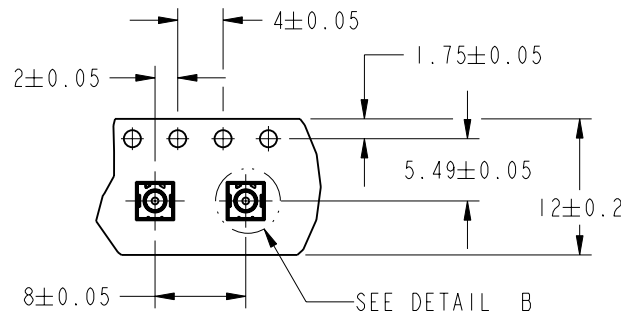
3. MATERIALS AND FINISHES (PLATING THICKNESS IN MICRO-INCHES):
  - SHELL - COPPER ALLOY, 50 MIN. NICKEL OVERALL, CONTACT AREA AU 2 MIN, SOLDERING AREA GOLD FLASH
  - A-PIN(MOVING) -STAINLESS STEEL, 50 MIN. NICKEL OVERALL, CONTACT AREA AU 5 MIN, SOLDERING AREA GOLD FLASH
  - B-PIN(FIXED) - COPPER ALLOY, 50 MIN. NICKEL OVERALL, CONTACT AREA AU 5 MIN, SOLDERING AREA GOLD FLASH
  - MOLD - ENGINEERING PLASTIC, UL 94V-0, BLACK

4. PACKAGING:
  - A. TAPE AND REEL PACKAGING.
  - B. QTY : 3K PCS/REEL(Ø330MM)
  - C. LEAVE 20 EMPTY POCKETS IN THE BEGINNING AND END OF EACH REEL.

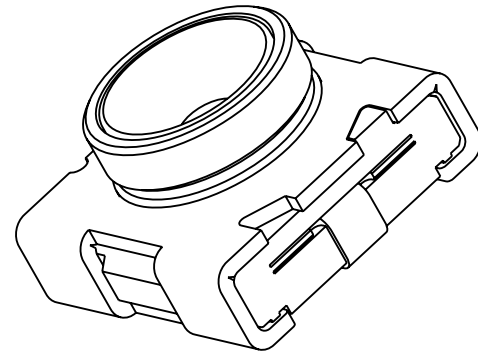
- NOTE:
1. COPLANARITY: MAX. 0.1
  2. OTHERWISE TOLERANCE: ±0.2
  3. RF SWITCH CIRCUIT DIAGRAM:



SCALE 1.500  
EMBOSSED CARRIER TAPE DIMENSIONS



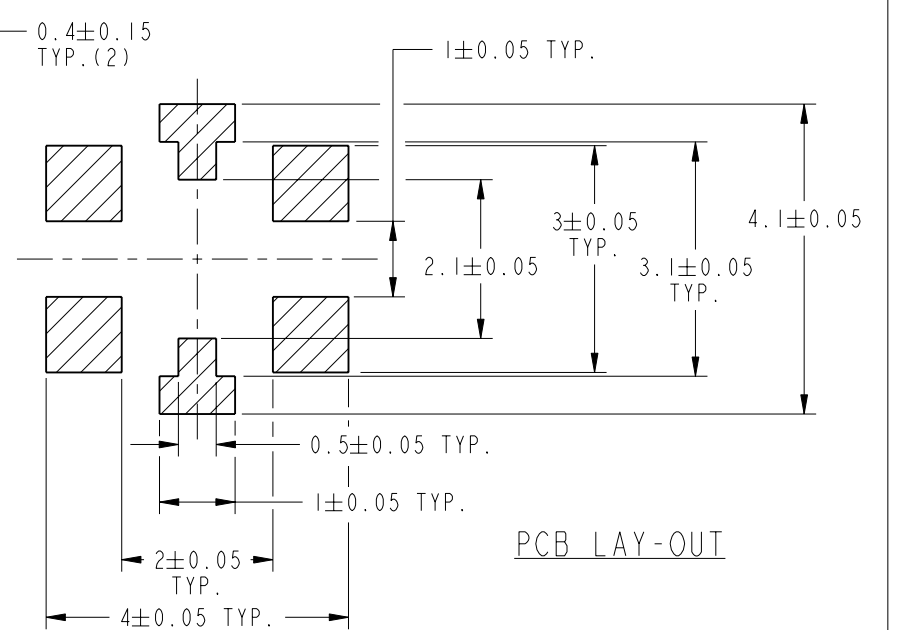
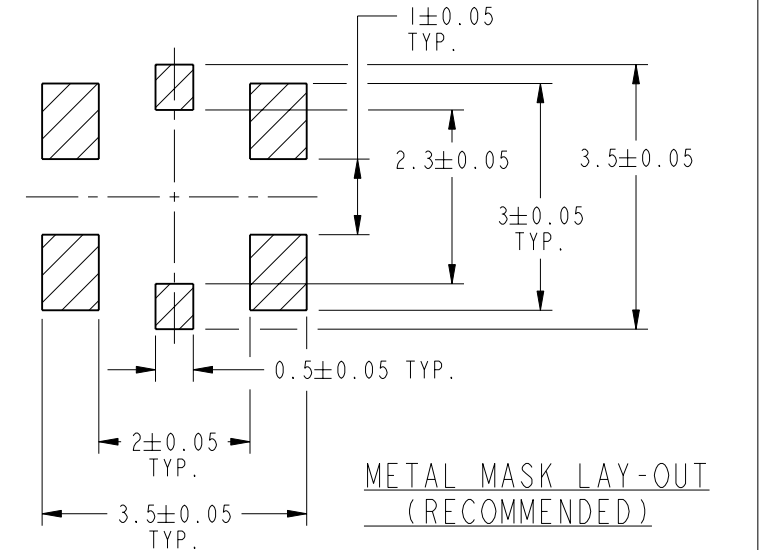
DETAIL B  
SCALE 6.000



SCALE 15.000

THIRD ANGLE PROJ.

|     |   | REVISIONS |       |      |
|-----|---|-----------|-------|------|
| REV | DESCRIPTION   | DATE      | ECO   | APPR |
| A   | RELEASE TO MFG.   | 3/5/08    | 46979 | NMV  |
| B   | UPDATED TEMPERATURE RANGE TO -40  | 4/2/09    | 47532 | TRC  |
| C   | ADDED NOTE 4  | 1/21/13   | 49403 | EW   |
| D   | CYCLES WAS 2000, 250 VAC WAS 100VAC, MATERIALS UPDATED, 0.80 WAS .75 ADDED NOTCH, CONTACT RESISTANCE WAS 50 mΩ INNER 40 mΩ OUTER, INSULATION RESISTANCE WAS 1000 MΩ MATERIAL WAS BeCu ADDED INPUT TERMINAL MATERIAL | 3/3/14    | 49763 | EW   |
| E   | SYNC THE DRAWING WITH DANBURY\RD-DMI411120IT1   | 24-Nov-14 | 50189 | RC   |



**CUSTOMER OUTLINE DRAWING**

ALL OTHER SHEETS ARE FOR INTERNAL USE ONLY

UNLESS OTHERWISE SPECIFIED, DIMENSIONS ARE IN METRIC AND TOLERANCES ARE:  
 <0.5mm ±0.05mm    0.5 - 6mm ±0.1mm    6 - 30mm ±0.2mm    30 - 120mm ±0.3mm    ANGLES ±1°

NOTICE - These drawings, specifications, or other data (1) are, and remain the property of Amphenol corp. (2) must be returned upon request; and (3) are confidential and not to be disclosed to any person other than those to whom they are given by Amphenol Corp. the furnishing of these drawings, specifications, or other data by Amphenol Corp., or to any other person to anyone for any purpose is not to be regarded by implication or otherwise in any manner licensing, granting rights to permitting such holder or any other person to manufacture, use or sell any product, process or design, patented or otherwise, that may in any way be related to or disclosed by said drawings, specifications, or other data.

|                                   |                      |                |                              |                                   |
|-----------------------------------|----------------------|----------------|------------------------------|-----------------------------------|
| MATERIAL                          | DRAWN TANGOR         | DATE 24-Nov-14 | TITLE<br>RF SWITCH ASSEMBLY  | Amphenol RF<br>www.amphenolrf.com |
| REFERENCE EAR # 2750 AND 902-9040 | ENGINEER PRAVEEN N.B | DATE 27-Dec-06 |                              |                                   |
| CONFIGURATION LEVEL:              | APPROVED RICKSON     | DATE 24-Nov-14 | SCALE: 13.0:1.0 SHEET 1 OF 1 | DRAWING NO. 902-9040              |
| FINISH                            | CAD FILE             | DWG SIZE B     | REV E                        | ITEM NO. 902-9040                 |
|                                   |                      |                |                              | PART NO. 902-9040                 |