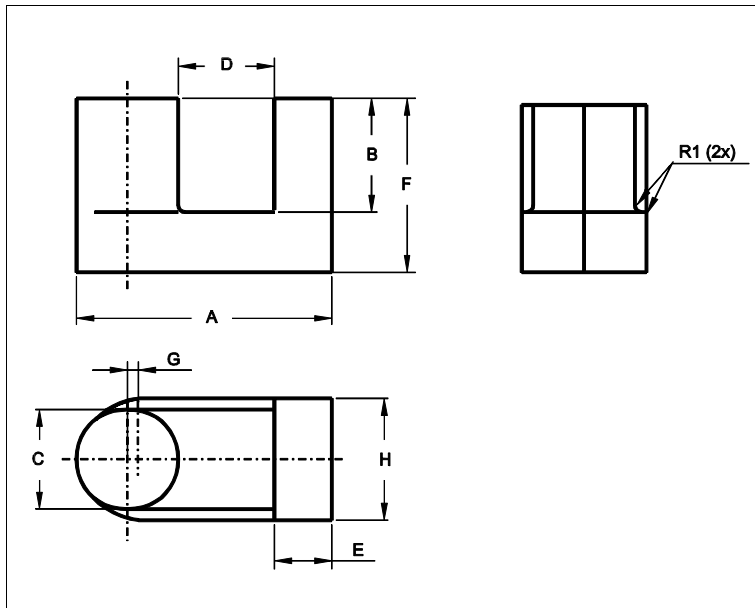


## Core **UR37/26/18**



Effective parameters			
	Parameter	Value	Unit
$\Sigma(I/A)$	core factor (C1)	0.865	mm <sup>-1</sup>
<b>Ve</b>	effective volume	18900	mm <sup>3</sup>
<b>Le</b>	effective length	128	mm
<b>Ae</b>	effective area	148	mm <sup>2</sup>
<b>Amin</b>	minimum area		mm <sup>2</sup>
<b>m</b>	UR37/26/18	≈ 55	g/pcs

Dimensions for product: UR37/26/18						
	Nom	Tol +	Tol -	Max	Min	Unit
<b>A</b>	36.90	0.80	0.80	37.70	36.10	mm
<b>B</b>					16.80	mm
<b>C</b>	14.70	0.30	0.30	15.00	14.40	mm
<b>D</b>					13.90	mm
<b>E</b>	7.30	0.20	0.20	7.50	7.10	mm
<b>F</b>	25.70	0.20	0.20	25.90	25.50	mm
<b>G</b>	1.60					mm
<b>H</b>	18.00	0.40	0.40	18.40	17.60	mm

Inductance factor				
Material	Value	Tol +	Tol -	Unit
3C90	3000	25%	25%	nH/turns <sup>2</sup>

Power loss: 3C90				
Measuring conditions			Max	Unit
25 kHz	200 mT	100 °C	2.300	W/set

Bsat					
Measuring conditions			Material	Min	Unit
10 kHz	250 A/m	100 °C	3C90	320	mT