

# Customer Information Sheet

DRAWING No.: M80-711XXXX

SHEET 2 OF 2

IF IN DOUBT - ASK

©

NOT TO SCALE

THIRD ANGLE PROJECTION

ALL DIMENSIONS IN mm

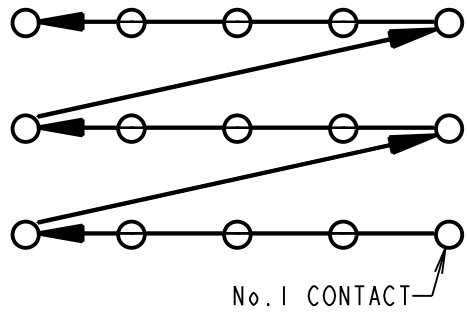
ORDER CODE:  
**M80-711XXXX**

TOTAL No OF CONTACTS:  
(EXCLUDING POWER CONTACTS)  
06, 15, 24, 30, 42

FINISH:  
05 - GOLD  
22 - SELECTIVE GOLD, TIN/LEAD  
42 - SELECTIVE GOLD, 100% TIN

**NOTES:**

1. FROM No. 1 POSITION,  
CONTACTS NUMBERED IN  
SEQUENCE FROM RIGHT TO LEFT,  
BOTTOM ROW TO TOP ROW  
(LOOKING ON MATING FACE)



**SPECIFICATION**

**MATERIALS:**

MOULDING = POLYIMIDE 46 UL94V-0  
CONTACTS (POWER) = BRASS  
CONTACTS (SIGNAL) = PHOSPHOR BRONZE  
JACKSCREWS, WASHERS & NUTS = STAINLESS STEEL

**FINISH:**

**POWER CONTACTS:**  
05 = 0.25 - 0.3µ ALL OVER 100% GOLD  
22 = 0.75µ GOLD, 60/40 TIN/LEAD SOLDER OVER TAILS  
42 = 0.75µ GOLD, 100% TIN SOLDER OVER TAILS

**SIGNAL CONTACTS:**  
05 = 0.25 - 0.3µ ALL OVER 100% GOLD  
22 = 0.75µ GOLD, 3.0µ 60/40 TIN/LEAD ON TAILS  
42 = 0.75µ GOLD, 3.0µ 100% TIN ON TAILS

**ELECTRICAL:**

CURRENT RATING AT 25°C = 3.0A MAX.  
CURRENT RATING AT 85°C = 2.2A MAX.  
VOLTAGE PROOF = 360V AC/DC  
CONTACT RESISTANCE:  
INITIAL = 20mΩ MAX.  
AFTER CONDITIONING = 25mΩ MAX.  
INSULATION RESISTANCE:  
INITIAL = 1000MΩ MIN.  
AFTER CONDITIONING = 100MΩ MIN.

**MECHANICAL:**

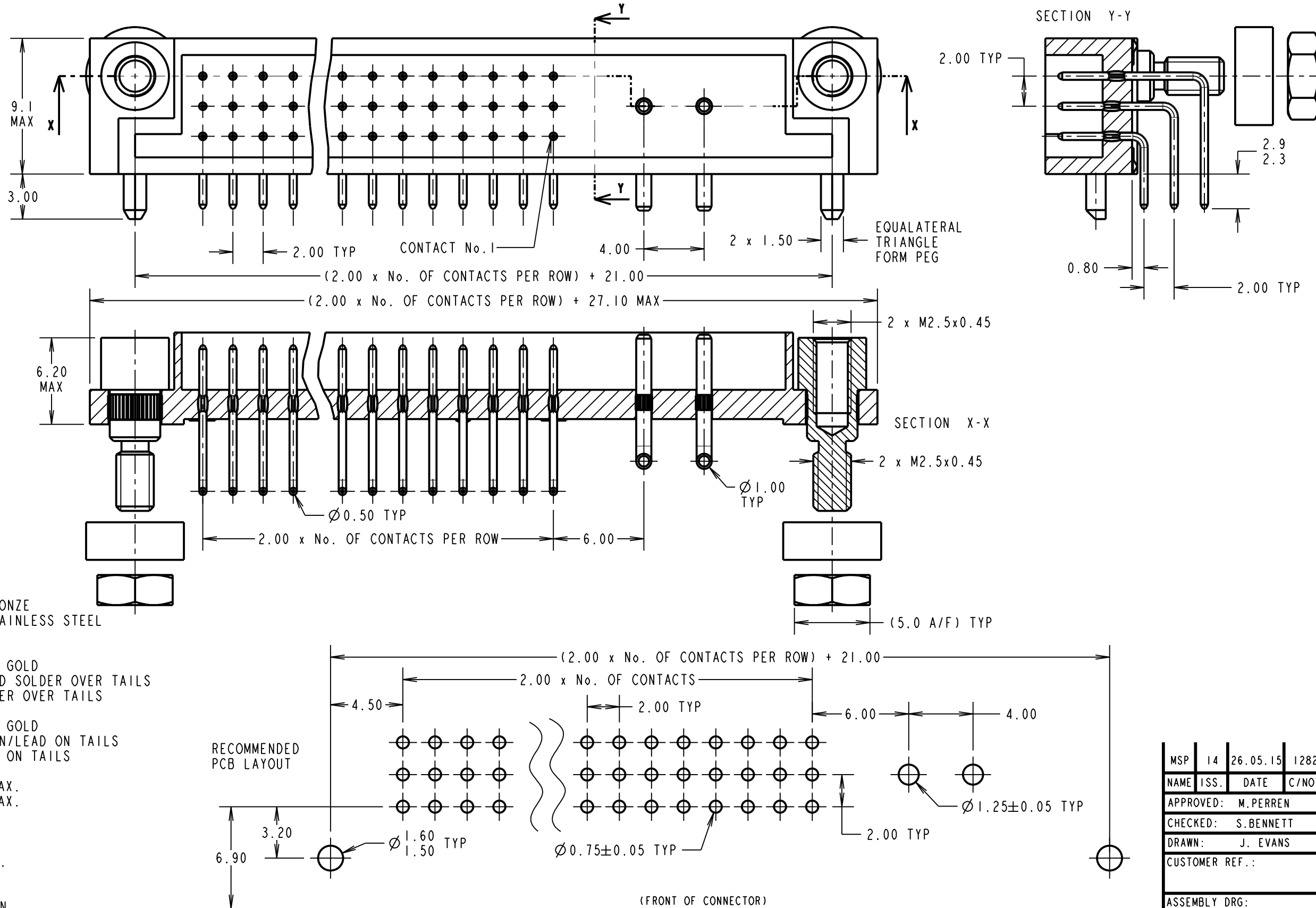
DURABILITY = 500 OPERATIONS

**ENVIRONMENTAL:**

TEMPERATURE RANGE = -55°C TO +125°C

**PACKING: TRAY**

FOR COMPLETE SPECIFICATION SEE COMPONENT SPECIFICATION CO17XX (LATEST ISSUE)



MSP	14	26.05.15	12829
NAME	ISS.	DATE	C/NOTE
APPROVED: M. PERREN			
CHECKED: S. BENNETT			
DRAWN: J. EVANS			
CUSTOMER REF.:			
ASSEMBLY DRG:			

**HARWIN**

www.harwin.com  
technical@harwin.com

THIS DRAWING AND ANY INFORMATION OR DESCRIPTIVE MATTER SET OUT HEREON ARE CONFIDENTIAL AND COPYRIGHT PROPERTY OF THE HARWIN GROUP AND MUST NOT BE DISCLOSED, LOANED, COPIED OR USED FOR MANUFACTURING, TENDERING OR FOR ANY OTHER PURPOSE WITHOUT THEIR WRITTEN PERMISSION.

**TOLERANCES**

X. = ±1mm  
X.X = ±0.50mm  
X.XX = ±0.10mm  
X.XXX = ±0.01mm  
ANGLES = ±5°  
UNLESS STATED

**MATERIAL:**

SEE ABOVE

**FINISH:**

SEE ABOVE

**S/AREA:**

mm<sup>2</sup>

TITLE: DATAMATE MIX-TEK 3-ROW MALE HORIZONTAL PC TAIL ASSY (WITH POWER CONTACTS)

DRAWING NUMBER:

**M80-711XXXX**

SHT  
2 OF 2