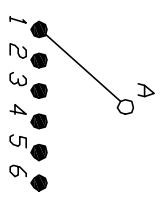
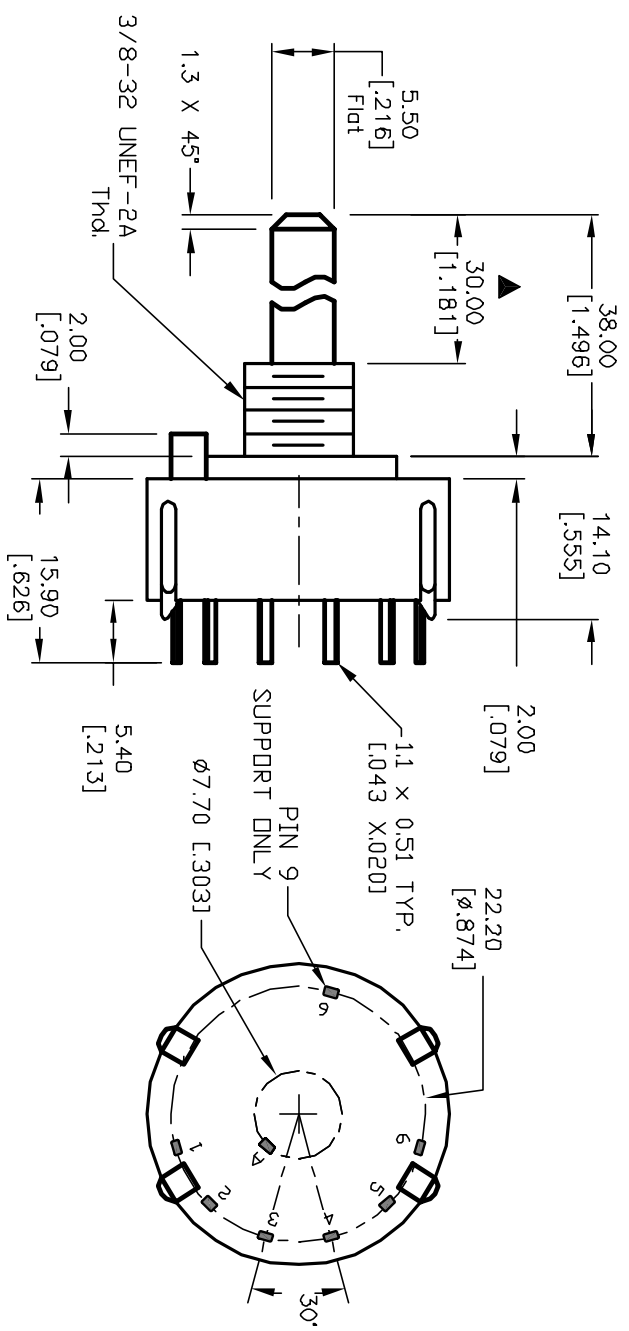
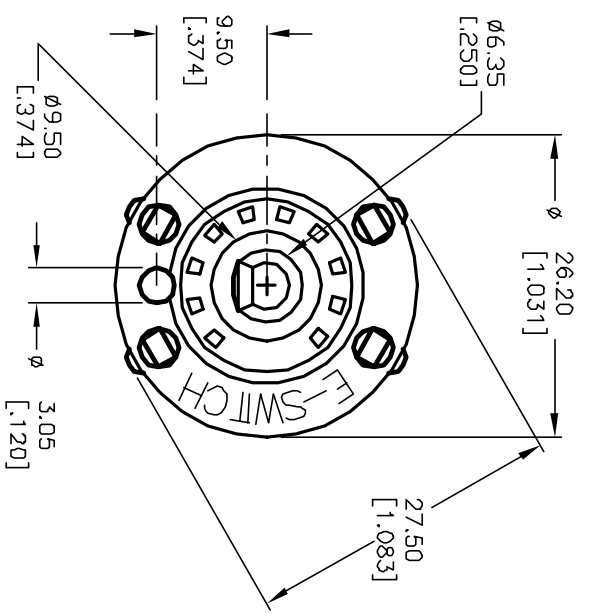
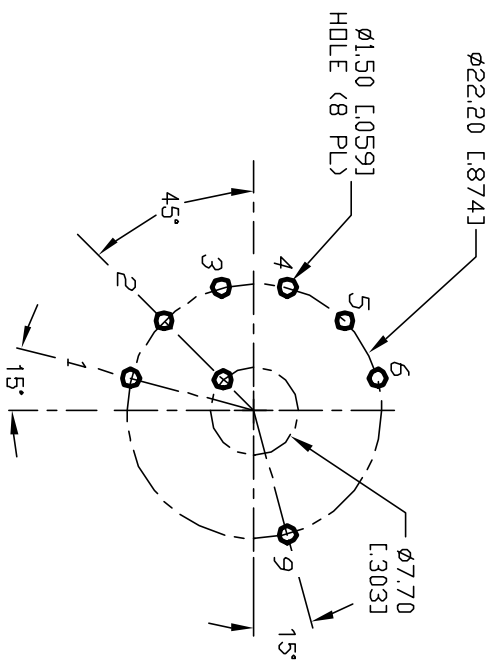


- NOTES:
1. ALL DIMENSION IN MM [INCH]
 2. GENERAL TOLERANCE: X.X=±0.4
X.XXX=±0.25
 3. TERM. NOS. FOR REF. ONLY
 4. CONTACT RATING SWITCHING: 150mA, 250V AC/DC
350mA, 110V AC/DC
 5. CONTACT RATING (NON-SWITCHING): 5A
 6. OPERATING FORCE: 425±100 CM/STANDARD
 7. CONTACT MATERIAL: SILVER OVER COPPER ALLOY
 8. OPERATING TEMP: -30° to 85°C
 9. CIRCUIT SP: 6 POSITIONS, 30° INDEX.
 10. DIELECTRIC STRENGTH: 1000V RMS min. @SEA LEVEL.
 11. DESIGNATE MAJOR DIMENSIONS
 12. STOP RING, LOCK NUT AND WASHER NOT SHOWN.



CONTACT CONFIGURATION
Timing (BBM) non shorting



C	12222	REVISED DESCR PER CATALOG	7/3/02	CJB	TITLE	SCALE	DATE	DR	DWG	REV
B	11516	REVISED	8/8/01	CJB	KC-16-A-(30.0mm) 01-N-P-S	1.5:1	8/8/01	CJB	G510707	C
REV.	ECN No.	DESCRIPTION	DATE	CHKD						
<p>THE INFORMATION CONTAINED IN THIS DOCUMENT IS PROPRIETARY TO E-SWITCH AND IS NOT TO BE COPIED OR TRANSFERRED</p>										

E-SWITCH®