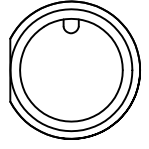


QUOTATION/SAMPLE DRAWING

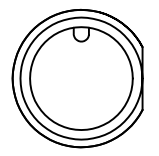
PART NUMBER:

NOTES & SPECIFICATIONS:

1. EPOXY SEAL: YES/NO
2. CUSTOMER PART NO.: _____ REV. _____

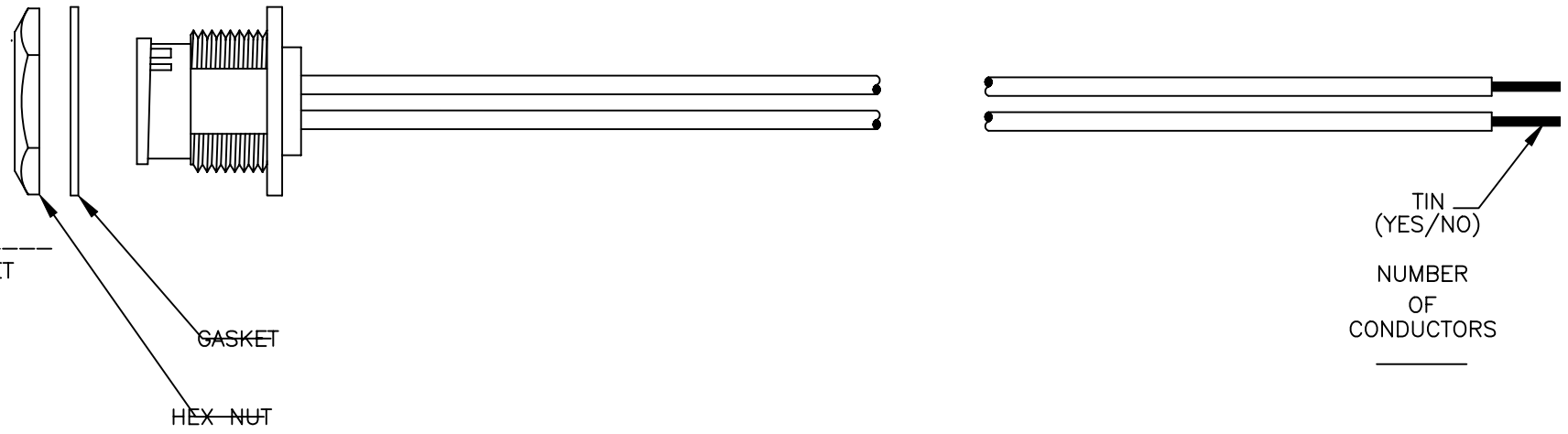


RIGHT FLAT (OPTIONAL)



FACE VIEW

CONTACT SIZE # _____
PIN/SOCKET



WIRE INFORMATION	
PART NO.:	
WIRE O.D.:	
JKT COLOR:	
JKT MATERIAL:	

STRANDING:	AGENCY APPROVALS	
TINNED:	CABLE/WIRE	ASSEMBLY
SHIELD: NO	UL:	
GAUGE:	CSA:	
OTHER:	OTHER:	

WIRE COLOR CODE									
PIN #1	PIN #2	PIN #3	PIN #4	PIN #5	PIN #6	PIN #7	PIN #8	PIN #9	PIN #10
PIN #11	PIN #12	PIN #13	PIN #14	PIN #15	PIN #16	PIN #17	PIN #18	PIN #19	PIN #20

- MEGA-CON-X
- MAXI-CON-X
- MULTI-CON-X
- MINI-CON-X
- MICRO-CON-X

DO NOT SCALE PRINT		REV.	DATE	DESCRIPTION	INIT.
NOTICE - All information illustrated or revealed on this document is proprietary, and is the exclusive property of the CONXALL CORPORATION. Unauthorized duplication or distribution of the information contained in this document is prohibited.		DRAWN BY: G.A. DATE: 8/10/94		601 E. WILDWOOD VILLA PARK, IL 60181	
		CHECKED BY:			
		APPROVED BY:		TITLE: MULTI-CON-X MINI-CON-X MICRO-CON-X MEGA-CON-X MAXI-CON-X	
UNLESS OTHERWISE SPECIFIED ALL UNITS ARE IN FEET, INCHES, AND FRACTIONS OF INCHES.		SCALE: NTS	SIZE: A	SHEET: 1 OF 1	CUSTOMER: _____
		FILE: QUOTE11	DISK: _____	PART NUMBER: _____	