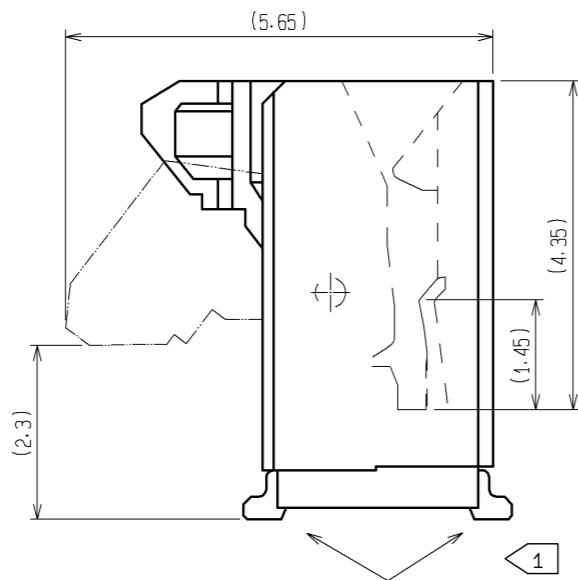
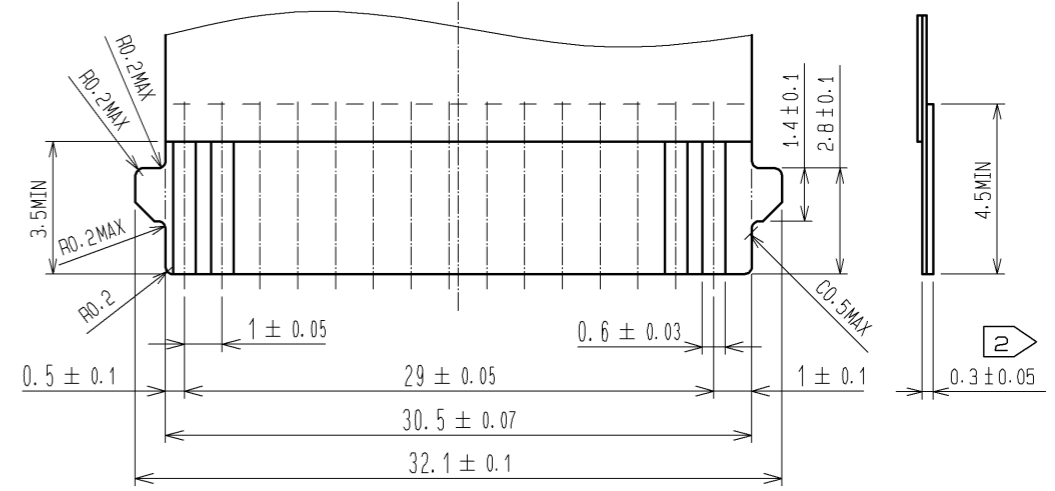


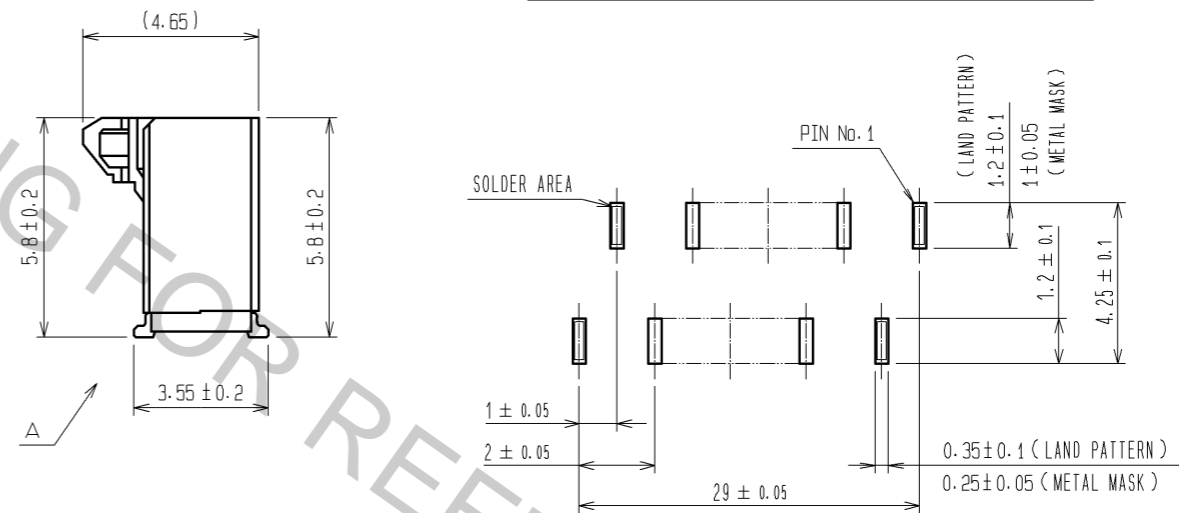
A (10 : 1)



RECOMMENDED FPC (FREE)



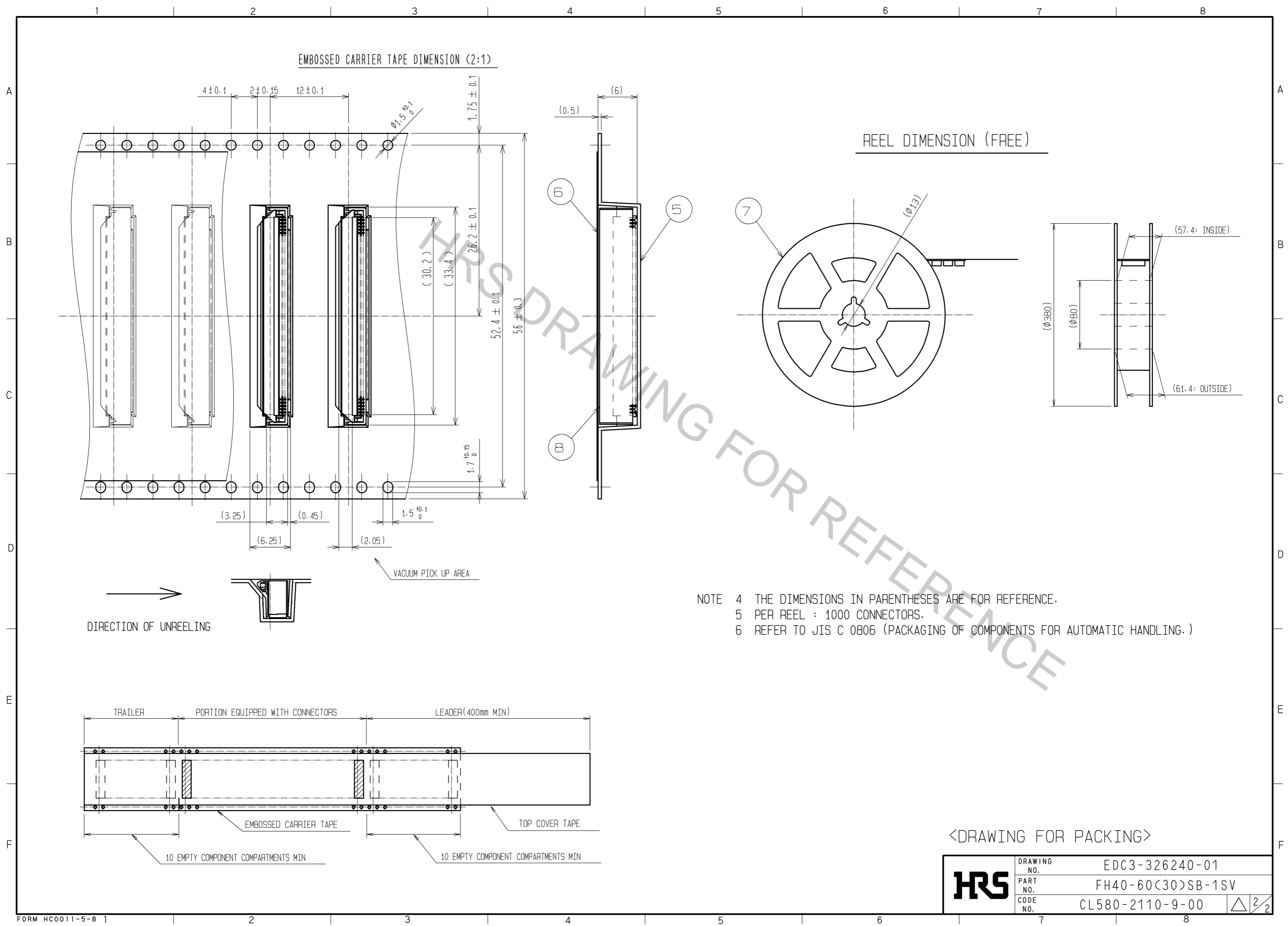
RECOMMENDED LAND PATTERN · METAL MASK(FREE)



RECOMMENDED METAL MASK THICKNESS: t=0.15

- NOTE
- ① LEAD CO-PLANARITY SHALL BE 0.1 MAX.
 - ② THICKNESS OF SUPPORTING TAPE SHALL BE 0.188(7.5mil) MIN.
 - ③ THIS PRODUCT SATISFIES HALOGEN FREE REQUIREMENTS DEFINED AS 900 PPM MAXIMUM CHLORINE, 900 PPM MAXIMUM BROMINE, AND 1500 PPM MAXIMUM TOTAL OF CHLORINE AND BROMINE.

4	PHOSPHOR BRONZE	(CONTACT AREA- LEAD) GOLD PLATING 0.05µm MIN. OVER NICKEL 1µm MIN. (OTHER) NICKEL 1µm MIN.			
3	PHOSPHOR BRONZE	(CONTACT AREA- LEAD) GOLD PLATING 0.05µm MIN. OVER NICKEL 1µm MIN. (OTHER) NICKEL 1µm MIN.	8	(CONNECTOR)	
2	LCP	(BLACK)	6	POLYESTER	
1	LCP	(BEIGE)	5	POLYSTYRENE	
NO.	MATERIAL	FINISH . REMARKS	NO.	MATERIAL	FINISH . REMARKS
UNITS mm		SCALE 5 : 1	COUNT △	DESCRIPTION OF REVISIONS	
DESIGNED		CHECKED		DATE	
APPROVED : NM. NISHIMATSU		10.09.28		DRAWING NO. EDC3-326240-01	
CHECED : HS. SAKAMOTO		10.09.27		PART NO. FH40-60(30)SB-1SV	
DESIGNED : TO. SHIBUYA		10.09.25		CODE NO. CL580-2110-9-00	
DRAWN : TO. SHIBUYA		10.09.25		△ 1/2	



EMBOSSED CARRIER TAPE DIMENSION (2:1)

REEL DIMENSION (FREE)

NOTE 4 THE DIMENSIONS IN PARENTHESES ARE FOR REFERENCE.
 5 PER REEL : 1000 CONNECTORS.
 6 REFER TO JIS C 0806 (PACKAGING OF COMPONENTS FOR AUTOMATIC HANDLING.)

<DRAWING FOR PACKING>

HRS	DRAWING NO.	EDC3-326240-01
	PART NO.	FH40-60(30)SB-1SV
	CODE NO.	CL580-2110-9-00
		△ 2/2