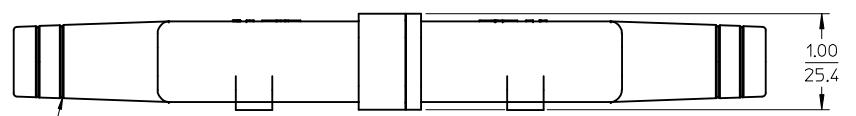
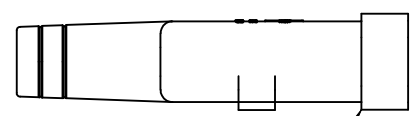


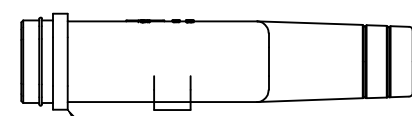
ASSEMBLED VIEWS



4X GROOVE PROVIDED AS CUT OFF GUIDE FOR USER WHEN USING THICK INSULATION TYPE CABLE.



194250002 FEMALE BOOT



194250001 MALE BOOT

NOTES:

1. MATERIAL: THERMOPLASTIC ELASTOMER. COLOR: BLACK. UV RESISTANCE: UL "F1".
2. PARTS ARE PACKAGED 15 EACH PER CARTON.

EC NO: ETC2004-0130 DRWN:DMYRICK 2004/01/21 CHKD:JPWLICK 2004/01/21 APPR:RDEROSS 2004/01/21	QUALITY SYMBOLS	GENERAL TOLERANCES (UNLESS SPECIFIED)		SCALE 1:1	DESIGN UNITS INCH	THIRD ANGLE PROJECTION	REVISE ON CAD ONLY
	▼ -0 ∇ -0		mm	INCH	DIMENSION STYLE IN/MM		TITLE
		4 PLACES	± ---	± ---	DRAWN BY DATE		WEATHERTIGHT MALE/FEMALE BOOT ASSY, 16-12 AWG, ROMEX CABLE, SC
		3 PLACES	± ---	± ---	DMYRICK 04/01/06	DATE	
	2 PLACES	± ---	± .025	CHECKED BY DATE	DATE	MOLEX INCORPORATED	
	1 PLACE	± 0.64	± ---	JPWLICK 04/01/06	DATE		
		ANGULAR ± 2 °		APPROVED BY DATE	MATERIAL NO.	DOCUMENT NO.	SHEET NO.
		DRAFT WHERE APPLICABLE MUST REMAIN WITHIN DIMENSIONS		RDEROSS 04/01/06	SEE DRAWING	SD-19425-001	1 OF 1
THIS DRAWING CONTAINS INFORMATION THAT IS PROPRIETARY TO MOLEX INCORPORATED AND SHOULD NOT BE USED WITHOUT WRITTEN PERMISSION							