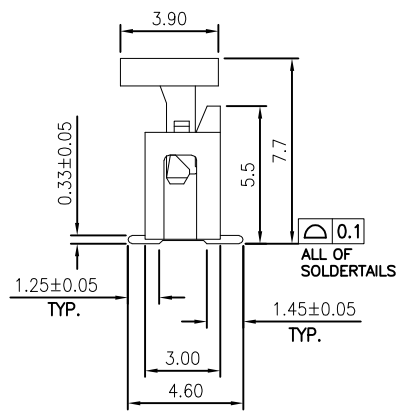
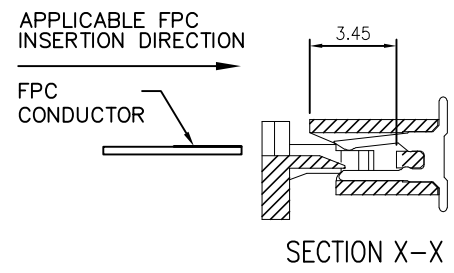
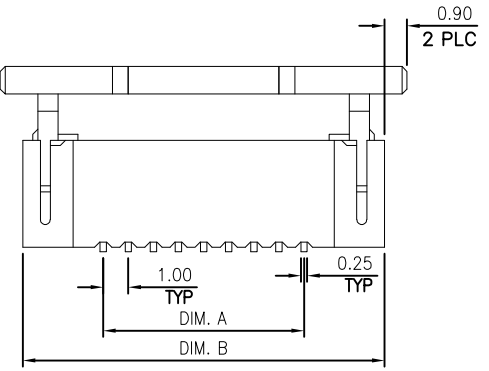
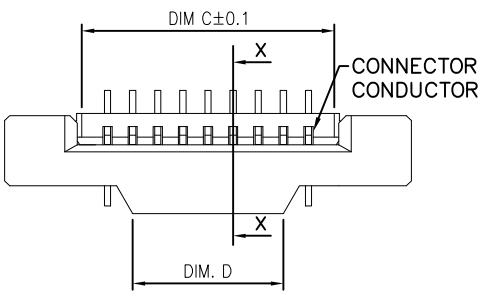
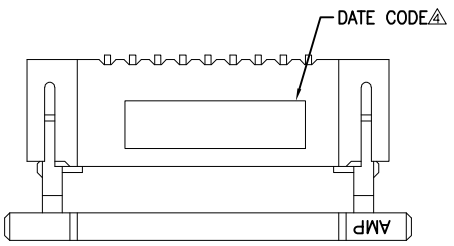
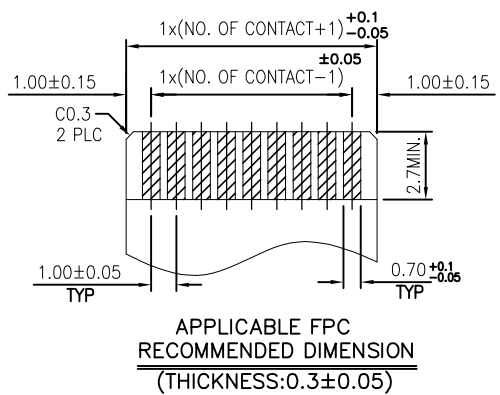


THIS DRAWING IS UNPUBLISHED. RELEASED FOR PUBLICATION  
 © COPYRIGHT BY TYCO ELECTRONICS CORPORATION. ALL RIGHTS RESERVED.

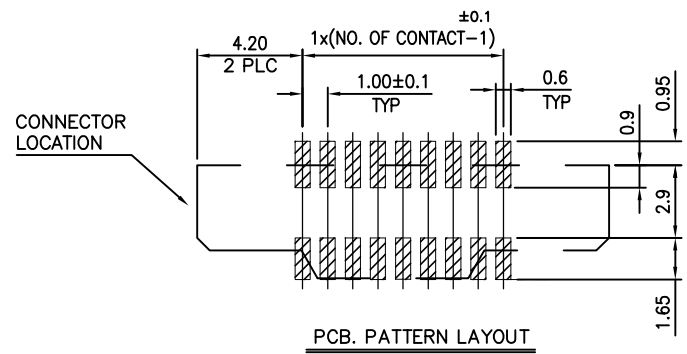
LOC	DIST	REVISIONS					
		P	LTR	DESCRIPTION	DATE	DWN	APVD
DW	-	B		REVISED (ECR-17-004265)	24MAR17	HX	WK



- NOTES:
- MATERIAL:
    - HOUSING: THERMOPLASTIC (NYLON 9T) UL94V-0; COLOR: BLACK.
    - ACTUATOR: THERMOPLASTIC (NYLON 9T) UL94V-0; COLOR: BLACK.
    - CONTACTS: PHOSPHOR BRONZE
  - FINISH:
    - CONTACT:
      - $3 \mu m$  ( $120 \mu \text{Å}$ ) MATTE-TIN PLATING OVERALL.
      - $1.27 \mu m$  ( $50 \mu \text{Å}$ ) MIN. NICKEL UNDERPLATING OVERALL.
  - RECOMMENDED PCB THICKNESS : 1.0mm
  - WITHOUT DATE CODE FOR 8 POSITION UNDER.
  - REFLOW SOLDER CAPABLE TO 260° PER TE SPEC. 109-201, CONDITION B.



37	41.06	45.6	39.0	40	4-1775695-0
36	40.06	44.6	38.0	39	3-1775695-9
35	39.06	43.6	37.0	38	3-1775695-8
34	38.06	42.6	36.0	37	3-1775695-7
33	37.06	41.6	35.0	36	3-1775695-6
32	36.06	40.6	34.0	35	3-1775695-5
31	35.06	39.6	33.0	34	3-1775695-4
30	34.06	38.6	32.0	33	3-1775695-3
29	33.06	37.6	31.0	32	3-1775695-2
28	32.06	36.6	30.0	31	3-1775695-1
27	31.06	35.6	29.0	30	3-1775695-0
26	30.06	34.6	28.0	29	2-1775695-9
25	29.06	33.6	27.0	28	2-1775695-8
24	28.06	32.6	26.0	27	2-1775695-7
23	27.06	31.6	25.0	26	2-1775695-6
22	26.06	30.6	24.0	25	2-1775695-5
21	25.06	29.6	23.0	24	2-1775695-4
20	24.06	28.6	22.0	23	2-1775695-3
19	23.06	27.6	21.0	22	2-1775695-2
18	22.06	26.6	20.0	21	2-1775695-1
17	21.06	25.6	19.0	20	2-1775695-0
16	20.06	24.6	18.0	19	1-1775695-9
15	19.06	23.6	17.0	18	1-1775695-8
14	18.06	22.6	16.0	17	1-1775695-7
13	17.06	21.6	15.0	16	1-1775695-6
12	16.06	20.6	14.0	15	1-1775695-5
11	15.06	19.6	13.0	14	1-1775695-4
10	14.06	18.6	12.0	13	1-1775695-3
9	13.06	17.6	11.0	12	1-1775695-2
8	12.06	16.6	10.0	11	1-1775695-1
7	11.06	15.6	9.0	10	1-1775695-0
6	10.06	14.6	8.0	9	1775695-9
5	9.06	13.6	7.0	8	1775695-8
4	8.06	12.6	6.0	7	1775695-7
3	7.06	11.6	5.0	6	1775695-6
2	6.06	10.6	4.0	5	1775695-5
2	5.06	9.6	3.0	4	1775695-4
2	4.06	8.6	2.0	3	1775695-3
DIM D	DIM C	DIM B	DIM A	PDS.	PART NUMBER

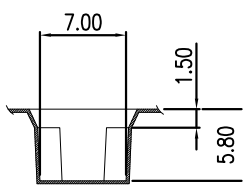


THIS DRAWING IS A CONTROLLED DOCUMENT.		DWN H. HUANG 28SEP2007	TE Connectivity NAME 1.0MM FPC, ZIF, VERTICAL, SMT TYPE		
DIMENSIONS: MM		CHK S. HOU 28SEP2007			
TOLERANCES UNLESS OTHERWISE SPECIFIED:		APVD W.J. KE 28SEP2007	PRODUCT SPEC 108-57080		
0 PLC $\pm 0.5$		QUALIFICATION TEST REPORT 501-57098			
1 PLC $\pm 0.38$		SIZE A3			
2 PLC $\pm 0.25$		CAGE CODE 00779			
3 PLC $\pm 0.15$		DRAWING NO C=1775695			
4 PLC $\pm$		RESTRICTED TO -			
ANGLES $\pm$		WEIGHT -			
MATERIAL SEE NOTE		CUSTOMER DRAWING			
FINISH SEE NOTE		SCALE -			
		SHEET 1 OF 2			
		REV B			

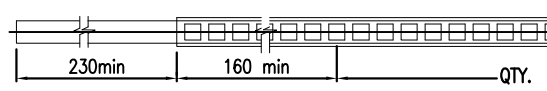
THIS DRAWING IS UNPUBLISHED. RELEASED FOR PUBLICATION  
 © COPYRIGHT BY TYCO ELECTRONICS CORPORATION. ALL RIGHTS RESERVED.

LOC	DIST	REVISIONS					
DW	-	P	LTR	DESCRIPTION	DATE	DWN	APVD
				SEE SHEET 1.			

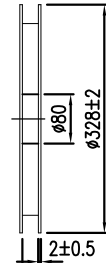
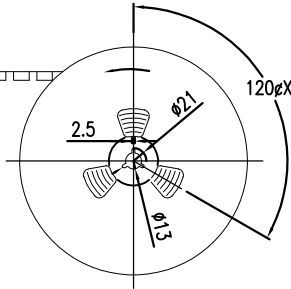
- NOTES:
- MATERIAL :
    - EMBOSSSED CARRIER: PS
    - COVER TAPE: PS
    - SHIPPING CARTON: CORRUGATED FIBER
  - DIMENSION :
    - REEL: W=DIM C
    - SHIPPING BOX: L=350, W=350, H=350
    - QUANTITY : PRIMARY PACKING: 1000 PCS/REEL
    - PEELING RESISTANCE: 10.2gf~71.4gf.
    - PEELING SPEED: 300mm/minutes.



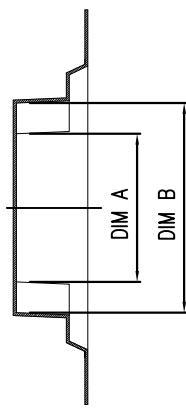
K-K' SECTION



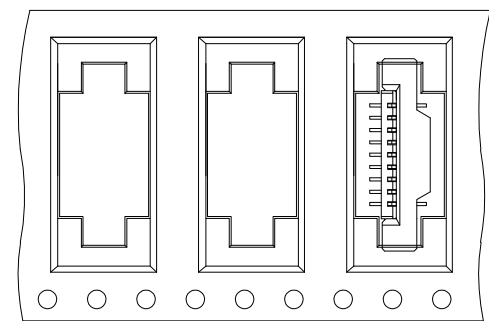
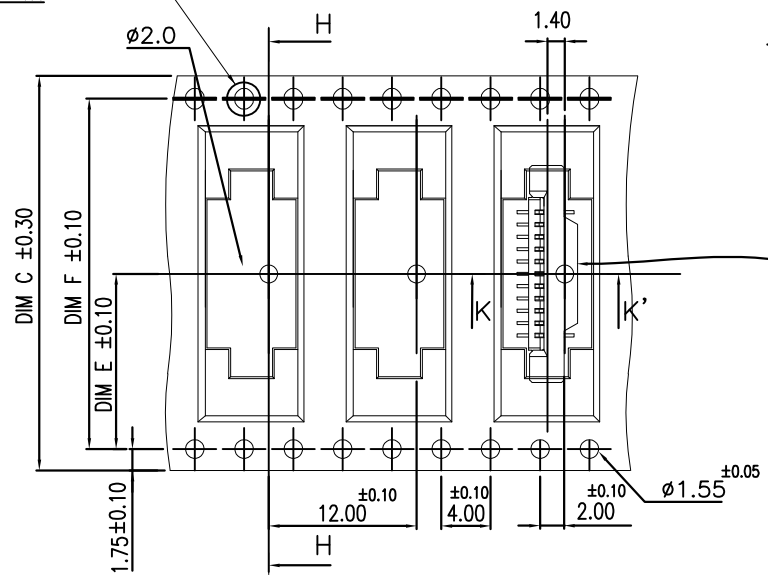
PULL OUT DIRECTION



SCALE 4:1



H-H' SECTION



FOR 3 TO 10 POS.

USER DIRECTION OF UNREELING

REELS/BOX	DIM F	DIM E	DIM D	DIM C	DIM B	DIM A	G/W (kg)	N/W (kg)	POS.	PART NUMBER
4	68.4	34.2	72.4	70	46	41	8.70	5.50	40	4-1775695-0
					45	40	8.57	5.37	39	3-1775695-9
					44	39	8.45	5.25	38	3-1775695-8
					43	38	11.60	7.68	37	3-1775695-7
					42	37	11.40	7.48	36	3-1775695-6
					41	36	11.21	7.29	35	3-1775695-5
					40	35	11.02	7.10	34	3-1775695-4
					39	34	10.83	6.91	33	3-1775695-3
					38	33	10.63	6.71	32	3-1775695-2
					37	32	10.44	6.52	31	3-1775695-1
					36	31	10.25	6.33	30	3-1775695-0
					35	30	10.06	6.14	29	2-1775695-9
					34	29	9.86	5.94	28	2-1775695-8
					33	28	9.67	5.75	27	2-1775695-7
					32	27	9.00	5.56	26	2-1775695-6
					31	26	8.80	5.36	25	2-1775695-5
					30	25	8.61	5.17	24	2-1775695-4
					29	24	8.42	4.98	23	2-1775695-3
					28	23	8.23	4.79	22	2-1775695-2
					27	22	8.03	4.59	21	2-1775695-1
					26	21	7.84	4.40	20	2-1775695-0
					25	20	7.65	4.21	19	1-1775695-9
					24	19	7.46	4.02	18	1-1775695-8
					23	18	7.26	3.82	17	1-1775695-7
					22	17	7.07	3.63	16	1-1775695-6
					21	16	9.20	5.16	15	1-1775695-5
					20	15	8.91	4.87	14	1-1775695-4
					19	14	8.62	4.58	13	1-1775695-3
					18	13	8.33	4.29	12	1-1775695-2
					17	12	8.04	4.00	11	1-1775695-1
					16	11	7.73	4.13	10	1-1775695-0
					15	10	7.41	3.81	9	1775695-9
					14	9	7.08	3.48	8	1775695-8
					13	8	6.76	3.16	7	1775695-7
					12	7	6.44	2.84	6	1775695-6
					11	6	6.12	2.52	5	1775695-5
					10	5	5.80	2.20	4	1775695-4
					9	4	5.48	1.88	3	1775695-3

THIS DRAWING IS A CONTROLLED DOCUMENT.

DIMENSIONS:	TOLERANCES UNLESS OTHERWISE SPECIFIED:
MM	0 PLC ± -
	1 PLC ± -
	2 PLC ± -
	3 PLC ± -
	4 PLC ± -
	ANGLES ± -
MATERIAL	FINISH ± -

DWN	28SEP2007
H. HUANG	
CHK	28SEP2007
S. HOU	
APVD	28SEP2007
W.J. KE	
PRODUCT SPEC	
APPLICATION SPEC	
WEIGHT	

**TE** TE Connectivity

1.0MM FPC, ZIF, VERTICAL, SMT TYPE

SIZE	CAGE CODE	DRAWING NO	RESTRICTED TO
A3	00779	C=1775695	-

CUSTOMER DRAWING

SCALE	SHEET	REV
-	2 of 2	B