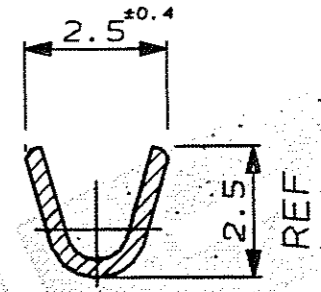
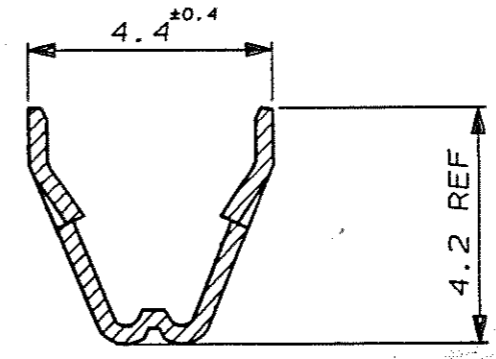
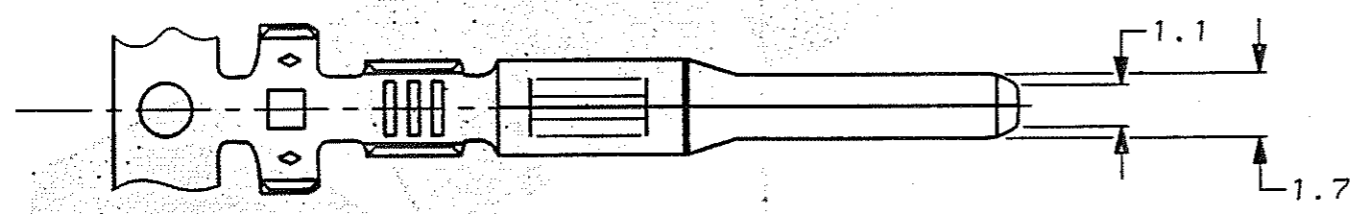
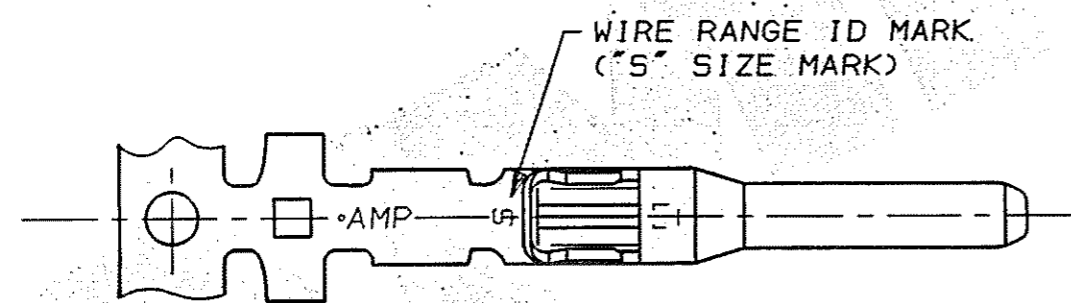
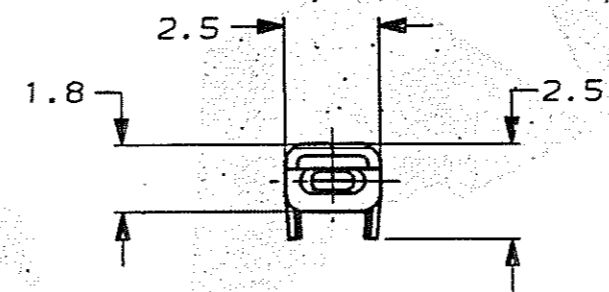
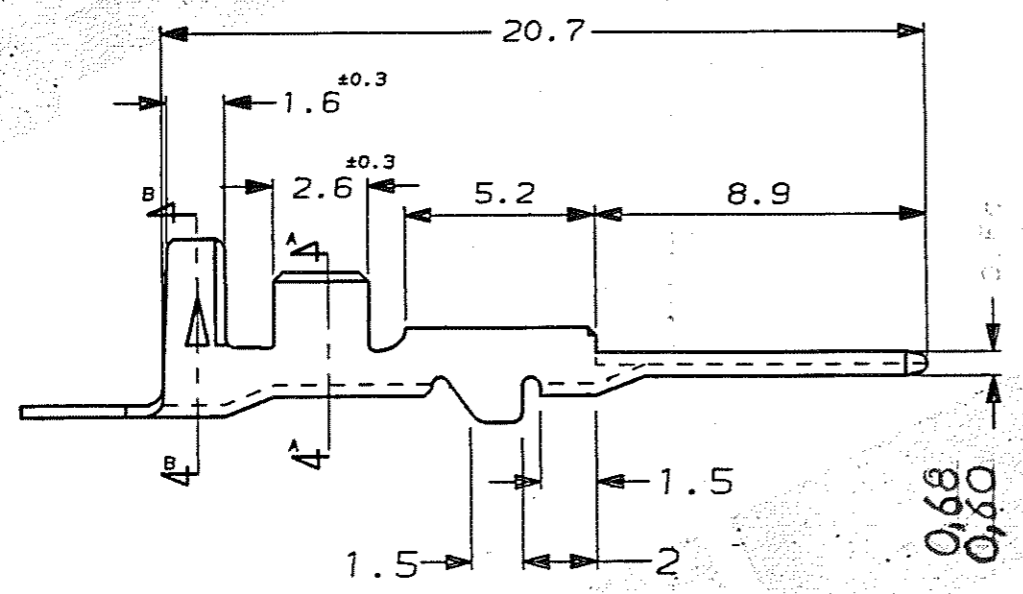


C.A.D. FILE CODE
S. C345210.B



SECT B-B

SECT A-A



- NOTES: -
- 1 WIRE DETAILS : 0.3-0.5mm² , 1.2-2.0 INS. DIA.
 - 2 SIMILAR TO PART NUMBER 173633.

PRE-TIN		BRASS	345210-1	
FINISH		MATERIAL	PART NUMBER	
CUSTOMER DWG FOR REFERENCE ONLY		©COPYRIGHT 1991 BY AMP OF GREAT BRITAIN LTD. ALL INTERNATIONAL RIGHTS RESERVED. ALL PRODUCTS MAY BE COVERED BY BRITISH AND FOREIGN PATENTS AND/OR PATENTS PENDING.		RELEASED FOR PUBLICATION 16 OCT 1991
-	-	TOLERANCES UNLESS OTHERWISE STATED :		DR. D.R. TERRY 16 OCT 1991
-	-	DEC ± 0.5		CH. M MISTRY APP. M MISTRY
-	-	ANGLES ± 1°		AMP TERMINAL HOUSE of Great Britain Ltd. STANMORE MIDD.
B	EB00-019-02	-	1-7-02	NAME .070 SERIES TAB CONTACT, MULTILOCK
A	SEE EB00-0191-93	18-6-93		SCALE LOC SIZE DWG.No.
0	RELEASE FOR PROD.	C6323	24-8-92	5/1 E A3 C345210
1	M. MISTRY	-	16-10-91	REV SHEET
REV	APPROVED	ECN	DATE	B 1/1