

SUMMARY

Wires

Low	5
High	0
Coax	0
Triax	0
Quad	0
Fiber	0
Fluidic	0



Image is for illustrative purpose only

Download

[Request a quote](#)

[Catalog](#)

Series	0F
Termination type	Female crimp
IP rating	67
Cable Ø	3.80 - 9.00 mm
Matching parts	
Status	
Alternative part	

TECHNICAL DETAILS

Mechanics

Shell Style/Model	PH*: Straight receptacle
Keying	3 keys (beta=150, gamma=60, plug: male contacts, receptacle: female contacts)
Housing Material	
Cable Fixing	∅ 3.8 - 9 mm
Variant	

Performance

Configuration	0F.305 : 5 Low Voltage
Insulator	L: PEEK (UL 94 / V-0/3.2, depends on material thickness)
Rated Current	6.5 Amps

Specifications

Contact Type: Crimp
Max. Matings: 5000
Contact Retention: 22 N
Contact Dia.: 0.7 mm (0.028in)
Bucket Dia.: 0.8 mm (0.031in)
Min. Conductor: 0.14 mm ² (AWG 26)

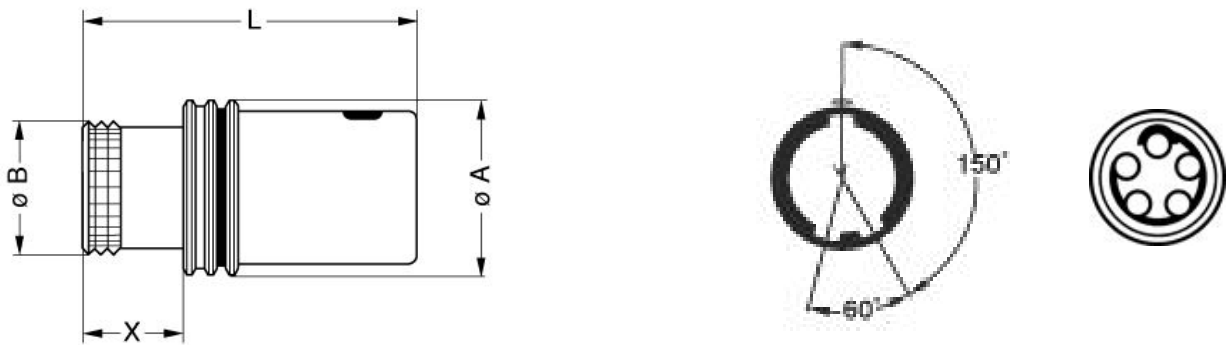
Max. Conductor: 0.34 mm² (AWG 22)
 R (max): 6.1 mOhm
 Vtest (contact-shell): 1200 V (AC), 1700 V (DC)
 Vtest (contact-contact): 1250 V (AC), 1770 V (DC)

Others

IP Rating: 67

DRAWINGS

Draws



Dimensions

	A	B	L
mm.	12	9	26.7
in.	0,47	0,35	1,05

RECOMMENDED BY LEMO





Tools

Crimp Tool: DPC.91.701.V
 Crimp settings: AWG/Selector = 22-24-26/6-5-5
 Positionner: DCE.91.070.BVM
 Extractor: DCF.93.070.4LT
 Replacement contact: EGG.0B.655.ZZM

Cables

CMN.05.T22.051PGCE	PVC	GREY	
			

Property of LEMO SA. All rights reserved
 This document is not contractual

CMN.05.T22.051PGZE CMN.05.T22.051PNCE	PVC	Grey Black	
CMN.05.T22.051PNZE			
CMN.05.T22.051QGZE	TPR (medical)	Grey	
050 090	PVC	Black	
050 140	PVC	Grey	
150 250	PVC	Grey	